

ControlSpace Remote Admin 3.0 User Guide

BOSE

ControlSpace | Remote

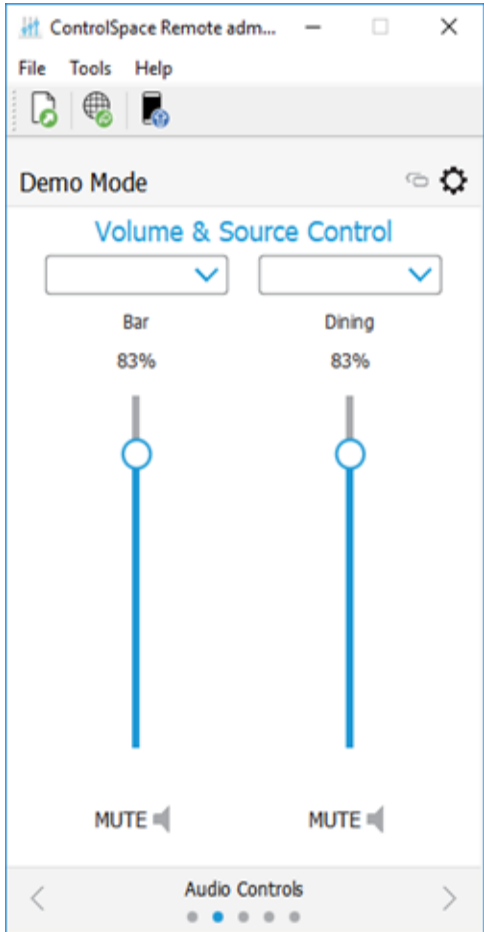
Table of Contents

Product Overview	1
Bose ControlSpace Remote Admin Application	1
Remote Admin Window	2
Menus	2
Toolbar	3
Control Panel Canvas	3
Sending to a Mobile Device	4
File Types	7

Product Overview

Bose ControlSpace Remote Admin Application

The Bose ControlSpace Remote Admin app is used by end-users to open .cpf and .cpz files on a PC and then connect to the ControlSpace hardware that's being controlled. This app is also used to send these files to other PCs or mobile devices running the ControlSpace Remote client app.



Example: ControlSpace Remote Admin app window

The Bose ControlSpace Remote Admin app is available in a PC or Mac version. To download the app, go to PRO.BOSE.COM.

Note: Before sending Remote app files to your Android or iOS device, make sure your PC and mobile device are connected to the same Wi-Fi network as your ControlSpace/PowerMatch devices.

Trademark Notices

Bose is a trademark of Bose Corporation.

ControlSpace, and ControlSpace Designer are trademarks of Bose Corporation.

Android™ and Google Play™ are trademarks of Google Inc.

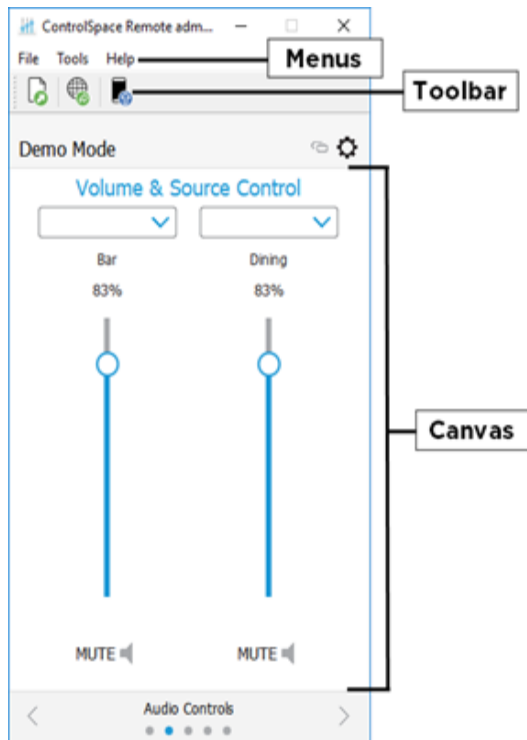
App Store® is a service mark of Apple Inc., registered in the U.S. and other countries.

Wi-Fi® is a registered mark of Wi-Fi Alliance.

All other trademarks are the property of their respective owners.

Remote Admin Window

The ControlSpace Remote Admin window contains three key elements: a menu bar, a toolbar, and the Control Panel canvas.

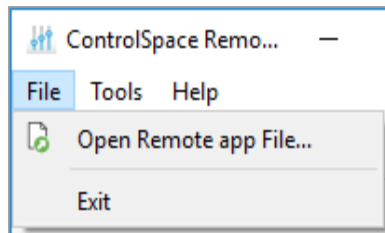


Remote Admin window

Menu

The menus located in the menu bar contain the main commands in ControlSpace Remote Admin.

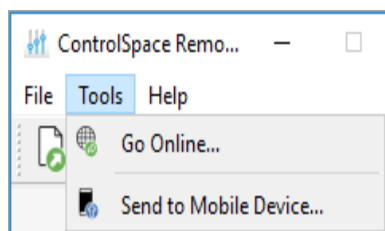
File Menu



The **File** menu includes the following options:

- **Open Remote app File:** Opens a window for browsing to an existing ControlSpace Remote app file.
- **Exit:** Closes the app.

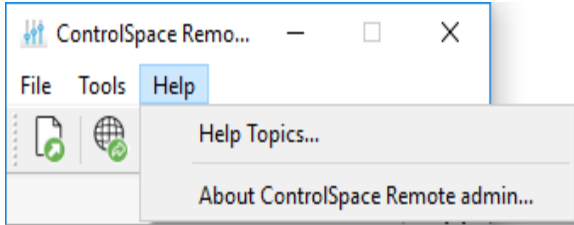
Tools Menu



The **Tools** menu includes the following options:

- **Go Online:** Connects to a ControlSpace network.
- **Send to Mobile Device:** Transmits the control panel file to a mobile device. See [Sending to a Mobile Device](#) to learn more.

Help Menu






The **Help** menu includes the following options:

- **Help Topics:** Opens online Help.
- **About ControlSpace Remote builder:** Opens a dialog box that reveals the software version number.

Toolbar

The toolbar contains icons/buttons that provide the following functions:

-  **Open Remote app file:** Opens a window for browsing to an existing ControlSpace Remote app file.
-  **Go Online:** Connects to a ControlSpace network.
-  **Send file to mobile device:** Transmits the control panel file to a mobile device. See [Sending to a Mobile Device](#) to learn more.

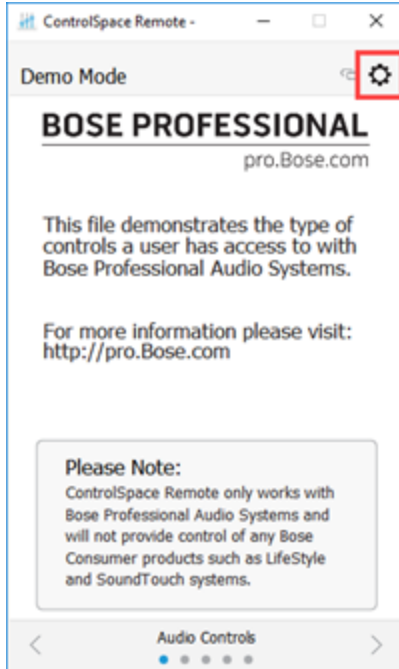
Control Panel Canvas

The canvas displays the open control panel file which can be sent to a mobile device using the **Send** command.

Sending to a Mobile Device

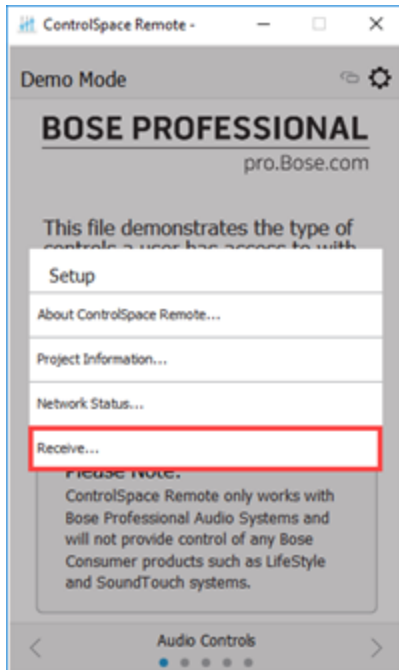
To send a panel to your mobile device, make sure your PC and mobile device are connected to the same wireless router.

1. Launch the ControlSpace Remote app on your mobile device.
2. Touch the **Settings** icon.



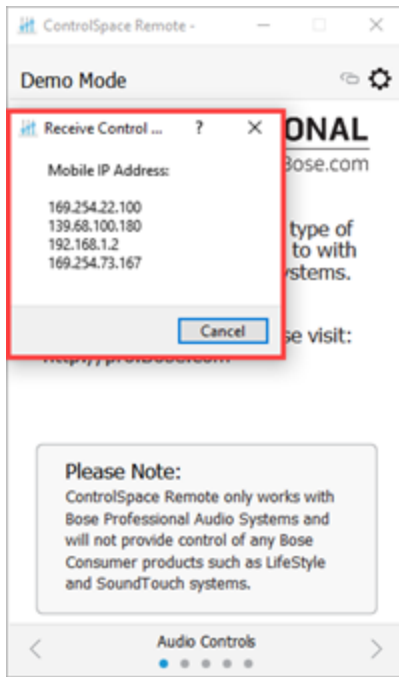
Remote App Settings icon

3. In the pop-up menu, touch **Receive**.



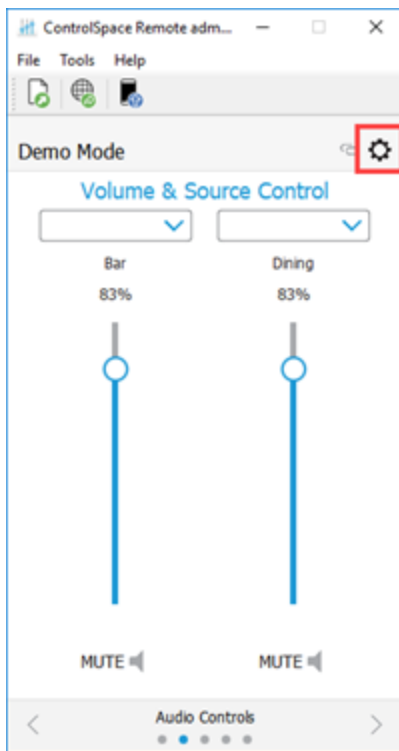
Selecting Receive in the Remote app

4. The **Receive Control Panel** dialog box opens and includes the IP address you will use in Step 5.



Receive Control Panel Dialog

5. On your computer in the Remote Admin window toolbar, click the **Send to Mobile Device** icon.



Send to Mobile Device Icon

6. In the **Send to Mobile Device** dialog box, enter the IP address shown in the **Receive Control Panel** dialog box on the mobile device and click **OK**.



Send to Mobile Device dialog box

7. The control panel file will be transferred to the mobile device.

File Types

This application is compatible with the following file types.

File Type	Description
.cpf	Custom control panel file.
.cpz	A packaged file that includes data from a control panel file (.cpf) and its associated ControlSpace Designer project file (.csp).