



BOSE L1 PRO SYSTEMS

REPAIR TIPS

BOSE

Repair Tips

1. Heat Sink Thermal Grease
2. Green Adhesive on Connectors
3. Device ID
4. Table for Boards
5. Software Updates
6. PRO.BOSE.COM/L1

Power Amplifier Heat Sink Thermal Grease

When replacing the Power Amplifier board, the old Heat Sink thermal grease must be removed with isopropyl alcohol and the new thermal grease must be installed.

GAP FILLER, THERMAL, PN 749859-0020
MUST be used during board replacement.
Failure to use the correct thermal grease
WILL cause thermal failures.



Heat Sink Thermal Grease

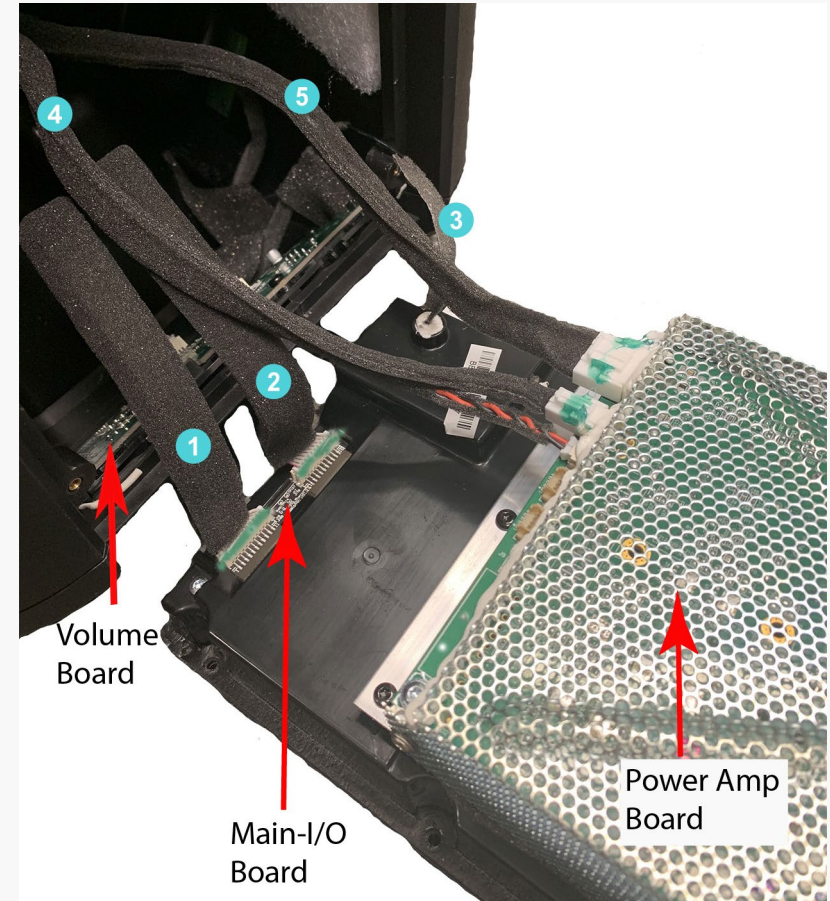
Green adhesive on Connectors

Connectors on the Main-I/O board and the Power Amp board have glue on them to ensure the cable is secure.

When removing the cable from the connector, use a spudger/screwdriver to separate the green adhesive from the edge of connections.

Re-assembly Note:

RTV may be used if the green adhesive is not available.



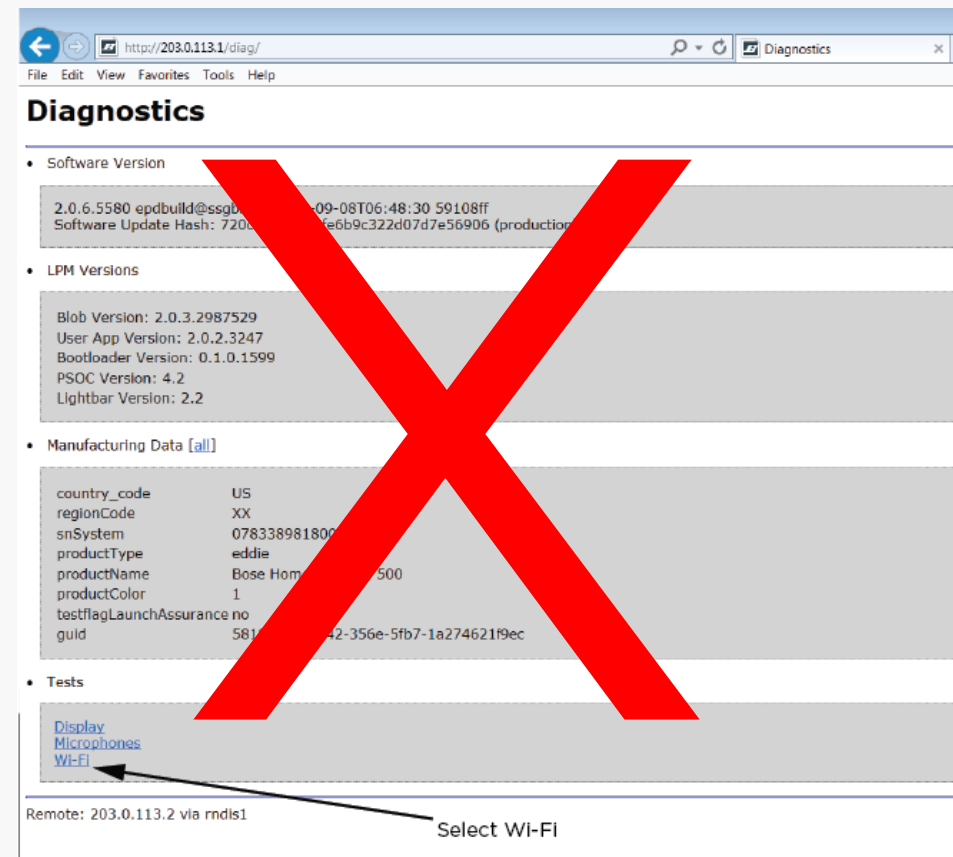
Items 1, 2 & 4, 5 are cables that need to be secured. Adhesive needs to be added during reassembly if the cable had been removed from the connector.

Device ID

For some Bose products, the main board needs to be programmed when it is replaced. The new board will be loaded with Manufacturing code and allows for a web page to be accessed to set up the following parameters:

1. Color
2. Country Code
3. Region Code
4. rfMask for DARR board
5. Mic Gain Values
6. Serial Number

Note: The Diagnostic web page is not available on L1 Pro products. All settings are done during production of the board and the web page is not needed.



There are no Device ID concerns when replacing the main board on the L1 Pro products. The Device ID is assigned at the factory. Service replacement Main-I/O PCBA's use the PCBA serial number instead of the system serial number. As a result, the system serial number will not show up in the L1 Mix app.

L1 Pro PCB Assembly Cross Reference Table

The volume PCB and the Antenna/cable PCB are the same in all three products.

The main PCB and power supply PCB are different in all three products

Product	Board Name	Service PN	SLAB PN	PCBA PN
L1 Pro8				
	ASSY,PCBA,MAIN-IO,SVCE	861373-001S	855774-0010	839038-0010
	ASSY,PCBA,PWR SUPP-AMP,L1 PRO8,SVCE	861372-001S	N/A	839040-0010
	PCB SUBASSY,VOLUME,L1 PRO8,SVCE	861359-001S	N/A	831793-0010
	ASSY,PCB,ANTENNA AND CABLE	796036-001S	N/A	N/A
L1 Pro16				
	ASSY,PCBA,MAIN-IO,PROG,L16,SVCE	865429-001S	864808-0010	838990-0010
	ASSY,PCBA,POWER SUPPLY,L16,SERV	863628-001S	N/A	838991-0010
	PCB SUBASSY,VOLUME,L8/16/32,SVCE	861359-001S	N/A	831793-0010
	ASSY,PCB,ANTENNA AND CABLE	796036-001S	N/A	N/A
L1 Pro32				
	ASSY,PCBA,MAIN,IO,L32,SVCE	864695-001S	864811-0010	839038-0020
	ASSY,SMPS,L32,SVCE	864694-001S	N/A	834378-0010
	PCB SUBASSY,VOLUME,L8/16/32,SVCE	861359-001S	N/A	831793-0010
	ASSY,PCB,ANTENNA AND CABLE	796036-001S	N/A	N/A
Sub1				
	SLAB ASSY,MAIN-IO,PROG,G1,SVCE	864960-001S	864988-0010	839595-0010
	ASSY,PCBA,POWER SUPPLY,G1,SVCE	864948-001S	N/A	839596-0010
Sub2				
	SLAB ASSY,MAIN-IO,PROG,G2,SVCE	864959-001S	864989-0010	839595-0020
	ASSY,PCBA POWER-AMP,G2,SVCE	865270-001S	N/A	841276-0010

Software Updates

***Note:** A USB-C cable is required (not included with your product). The L1 Pro family of products is not compatible with Thunderbolt 3 cables.*

1. On a computer, open a web browser and go to **btu.bose.com**.

***Note:** Not compatible with Internet Explorer or Safari.*

2. Click **Download** to download the **Bose Updater**.

3. View the End-User License Agreement, then click **I Agree**.

4. Install the **Updater**

5. Once installed, open the **Updater**.

6. Plug your product into a power source.

7. Connect your product to your computer using a USB-C cable. The **Updater** will identify your product automatically.

Bose Updater

Take a moment to download and install the **Bose Updater**. With this app, you can easily update your product and find out when new software updates are available. After you've installed it, you can use this website to update your products. If you've already installed the app, go ahead and launch it!

Download

Launch

Bose Updater

Here's how it works...



Run the **Bose Updater** installer and make sure the app has successfully installed. The app icon should be visible in your system tray at the bottom of your screen (Windows) or the menu bar at the top of your screen (Mac).



Once installed, **launch the Bose Updater** app.



You'll need to find a USB cable or drive to connect the product.



The **Bose Updater** will tell you if there are any available updates for your product.

If this page doesn't change once you've launched the Bose Updater from your desktop, [click here](#).

Learn More at [PRO.BOSE.COM/L1](https://pro.bose.com/l1)

Videos and detailed instructions on how to use the L1 products are shared on [PRO.BOSE.COM/L1](https://pro.bose.com/l1)

L1 PRO PORTABLE LINE ARRAY SYSTEMS DIALED IN FOR PURE PERFORMANCE

Welcome to a new era of on-the-go audio for singer-songwriters, mobile DJs, and bands. Choose from three L1 Pro models: L1 Pro8, the most portable L1 Pro system; L1 Pro16, a balance of power and portability; and L1 Pro32 —the most advanced L1 ever.



L1 PRO8



L1 PRO16



L1 PRO32



SUB1 & SUB2

A woman in a blue athletic outfit is sitting on a blue mat in a climbing gym. The background features a large climbing wall with various colorful holds (orange, purple, black, red) and a large white Bose logo overlaid in the center. The scene is dimly lit, suggesting an indoor climbing facility.

BOSE