

SERVICE BULLETIN



Bulletin Part Number: 318882-B2

Product: L1 Compact Portable Line Array System

Subject: Excessive noise floor on the Channel 1 mic input

Disposition: On all L1 Compact systems built before 8/18/09 (DOM 9230) that are sent in for repair due to excessive noise floor on the channel 1 mic input, replace the six resistors listed in step 2 of the below rework procedure. Also replace two resistors in the channel 2 circuitry to improve the long-term performance of the channel 2 volume control potentiometer.

Symptom: Excessive noise floor on the Channel 1 mic input.

Reason: Circuit gain initially set too high during design.

Solution: Perform the rework procedure below.

Rework Procedure:

CAUTION! The integrated circuits used on the Input / Output PCB are extremely sensitive to damage from electrostatic discharge. Observe all ESD handling procedures to prevent damage to the PCB assembly during the rework process.

1. Using the disassembly procedures in the service manual, remove the handle from the power stand. Remove the top cover with the Input / Output PCB mounted to it. It is not necessary to remove the I/O board from the top cover plastic to perform this rework procedure.
2. Locate the following SMD resistors and replace them with the values listed below. Refer to the board layout diagram on page 2 of this bulletin for the resistor locations. All resistors are SMT package size 0603, 1% parts.

Mic (channel 1) Noise Reduction:

- Change R117 to 47.5 Ohm - Bose part number 191465-47R5
- Change R171 to 4.7K - Bose part number 191465-4701 (position was unused previously)
- Change R165 to 68.1K - Bose part number 191465-6812
- Change R311 to 24.9K - Bose part number 191465-2492
- Change R248 to 13.7K - Bose part number 191465-1372
- Change R190 to 10K - Bose part number 191465-1002

Lower Wiper Resistor Value for Channel 2:

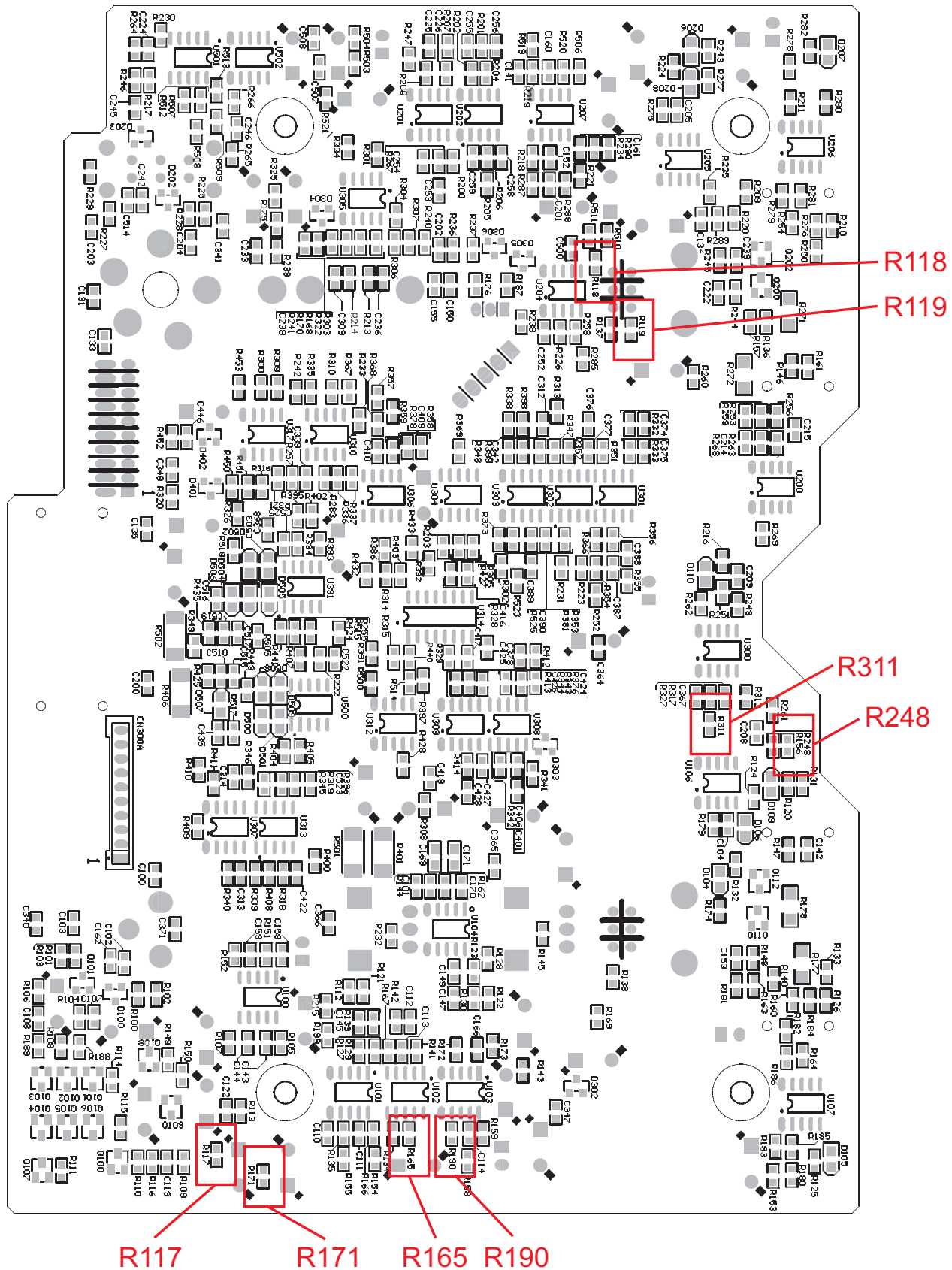
- Change R118 to 68.1K - Bose part number 191465-6812
- Change R119 to 68.1K - Bose part number 191465-6812

3. Re-install the I/O PCB assembly and the handle into the power stand cabinet.
4. Perform the power stand test procedures located in the L1 Compact service manual to ensure proper operation before returning the system to the customer.

Note: Refer to the L1 Compact service manual, 318882-SM, located on the service web site located at <http://serviceops.bose.com> for disassembly and test procedures.

Date Issued: 8/09

SERVICE BULLETIN



Input / Output PCB Component Locations for Rework Procedure