

REMARK:

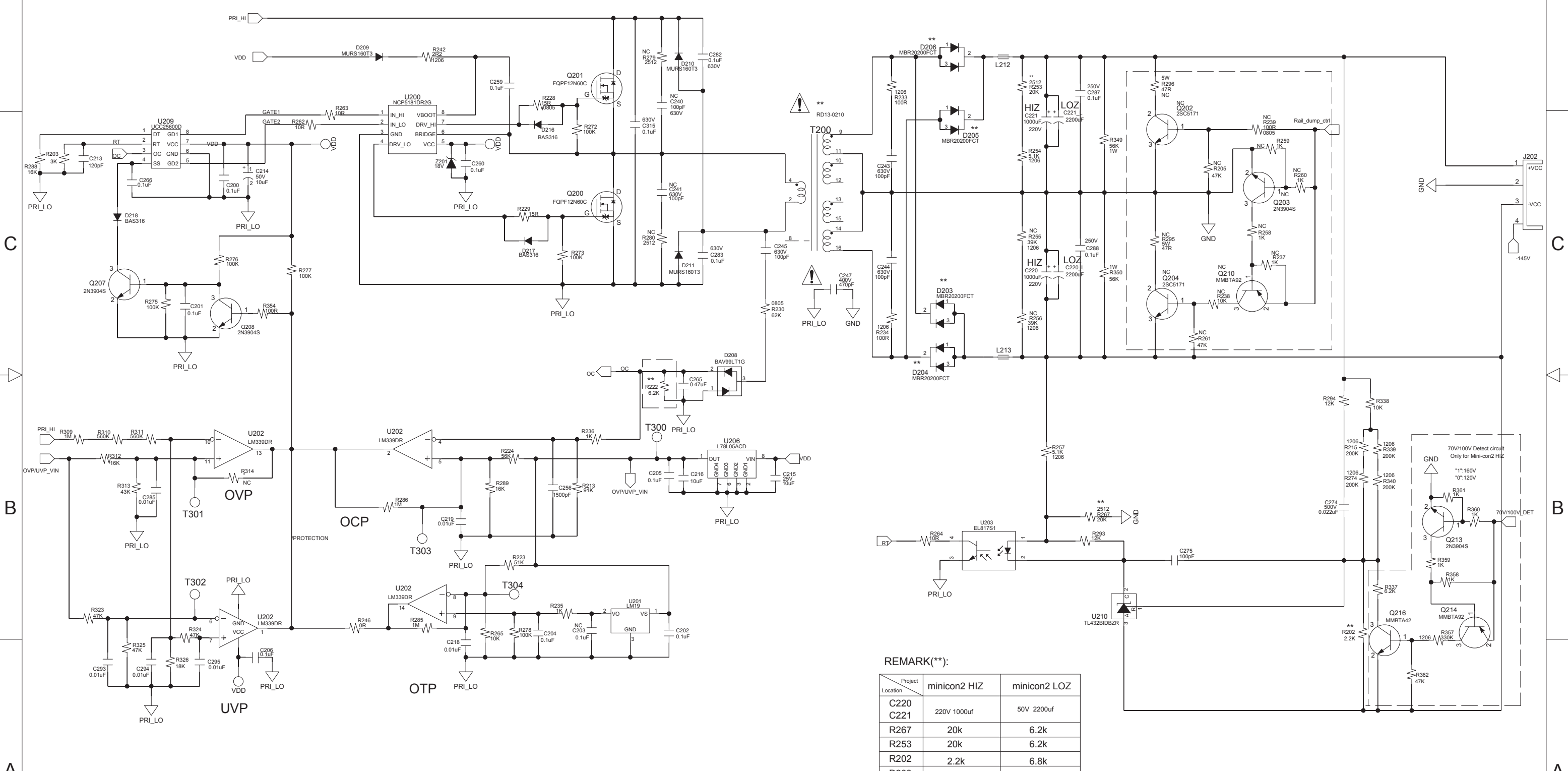
Project	minicon2 HIZ	minicon2 LOZ
R347	330k	68k

- E-TEST200
- E-TEST201
- E-TEST202
- E-TEST203
- MARK200
- MARK201
- MARK202
- MARK203

- Notes:
- 1)NC:means the part is no connect
 - 2)**:Please refer to the remark
 - 3)Unless otherwise marked,all resistor is 1/16W,0603
 - 4)Unless otherwise marked,all capacitors voltage is 50V



ZA 2120-HZ AMPLIFIER
 SMPS PCB ASSEMBLY
 PCB P/N: 729409-001S
 SCHEMATIC REVISION 3.0
 SHEET 1 OF 5



REMARK(**):

Project Location	minicon2 HIZ	minicon2 LOZ
C220	220V 1000uf	50V 2200uf
R267	20k	6.2k
R253	20k	6.2k
R202	2.2k	6.8k
D203	ER1606CT	MBR20200FCT
D204	600V 16A	200V 20A
D205		
D206		
T200	O/P is 160V	O/P is 40V
R222	6.2k	4.7k

BOSE

ZA 2120-HZ AMPLIFIER
SMPS PCB ASSEMBLY
PCB P/N: 729409-001S
SCHEMATIC REVISION 3.0
SHEET 2 OF 5

D

C

B

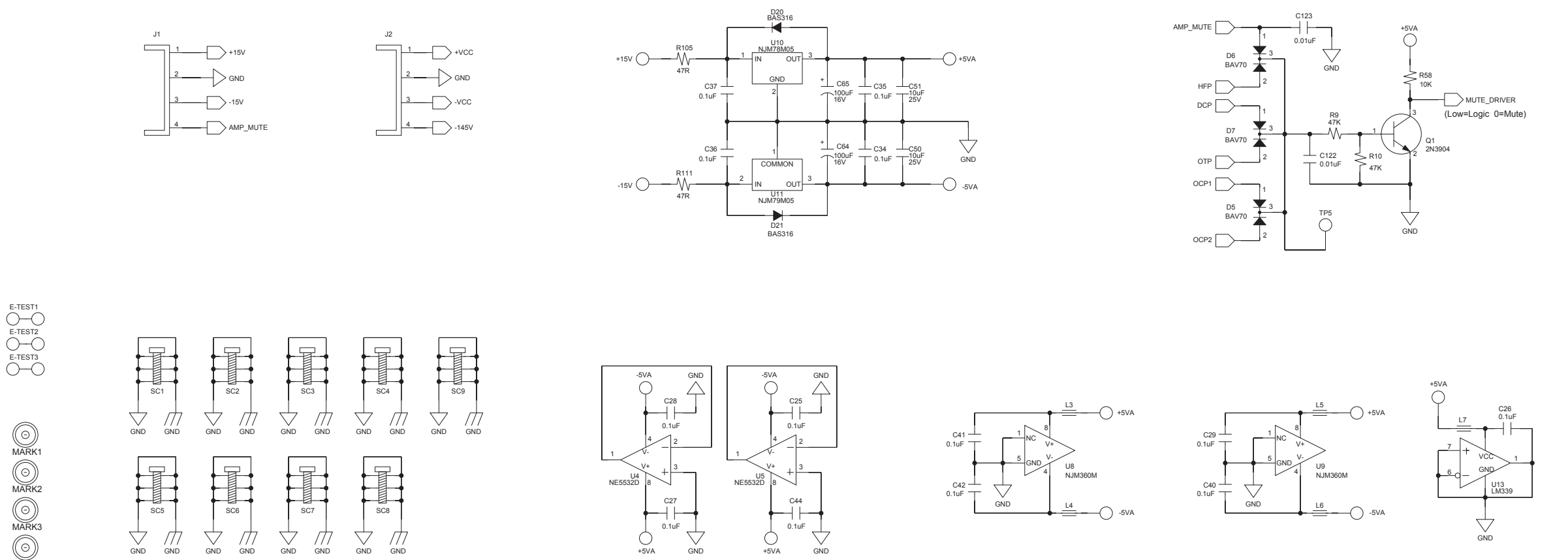
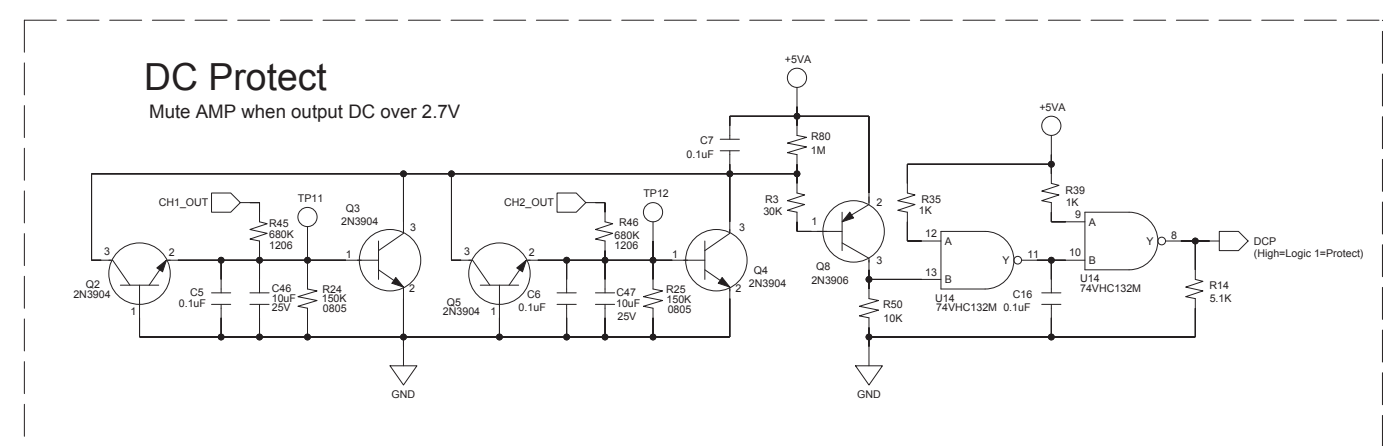
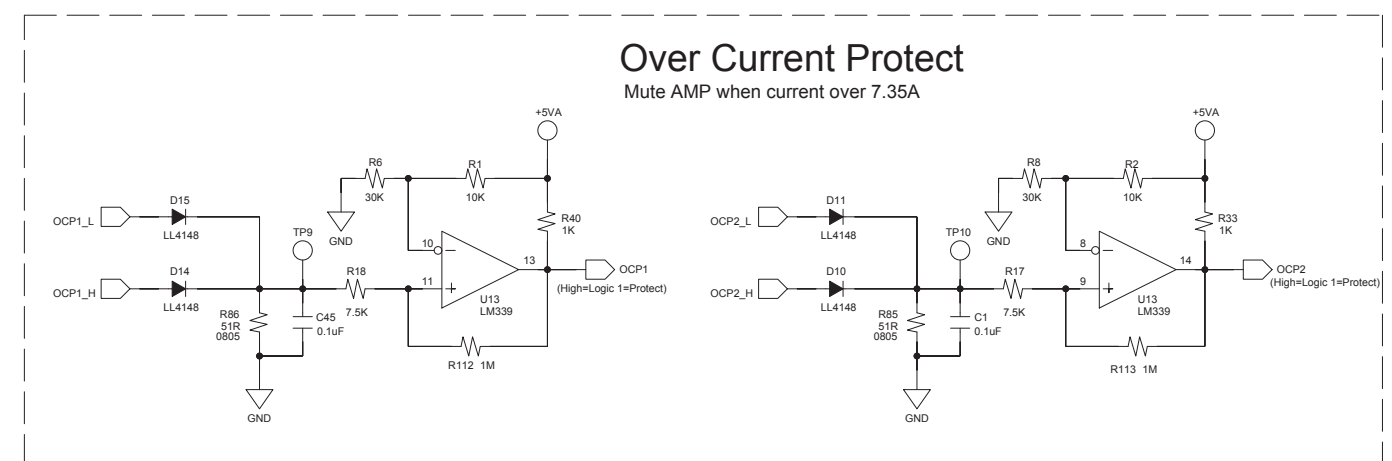
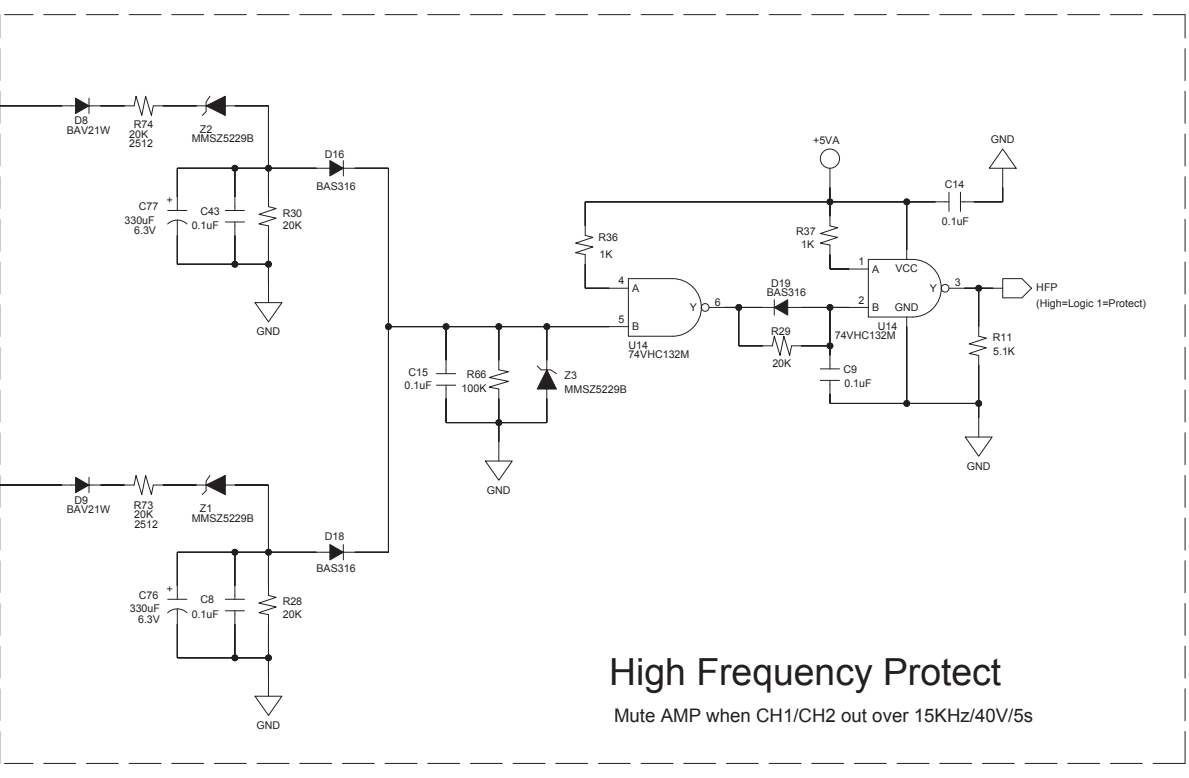
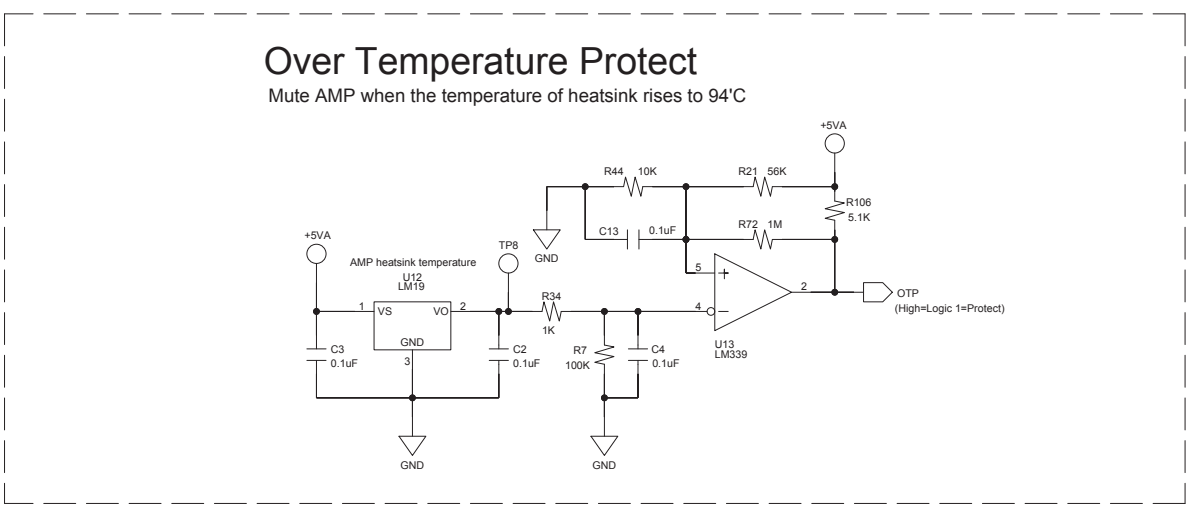
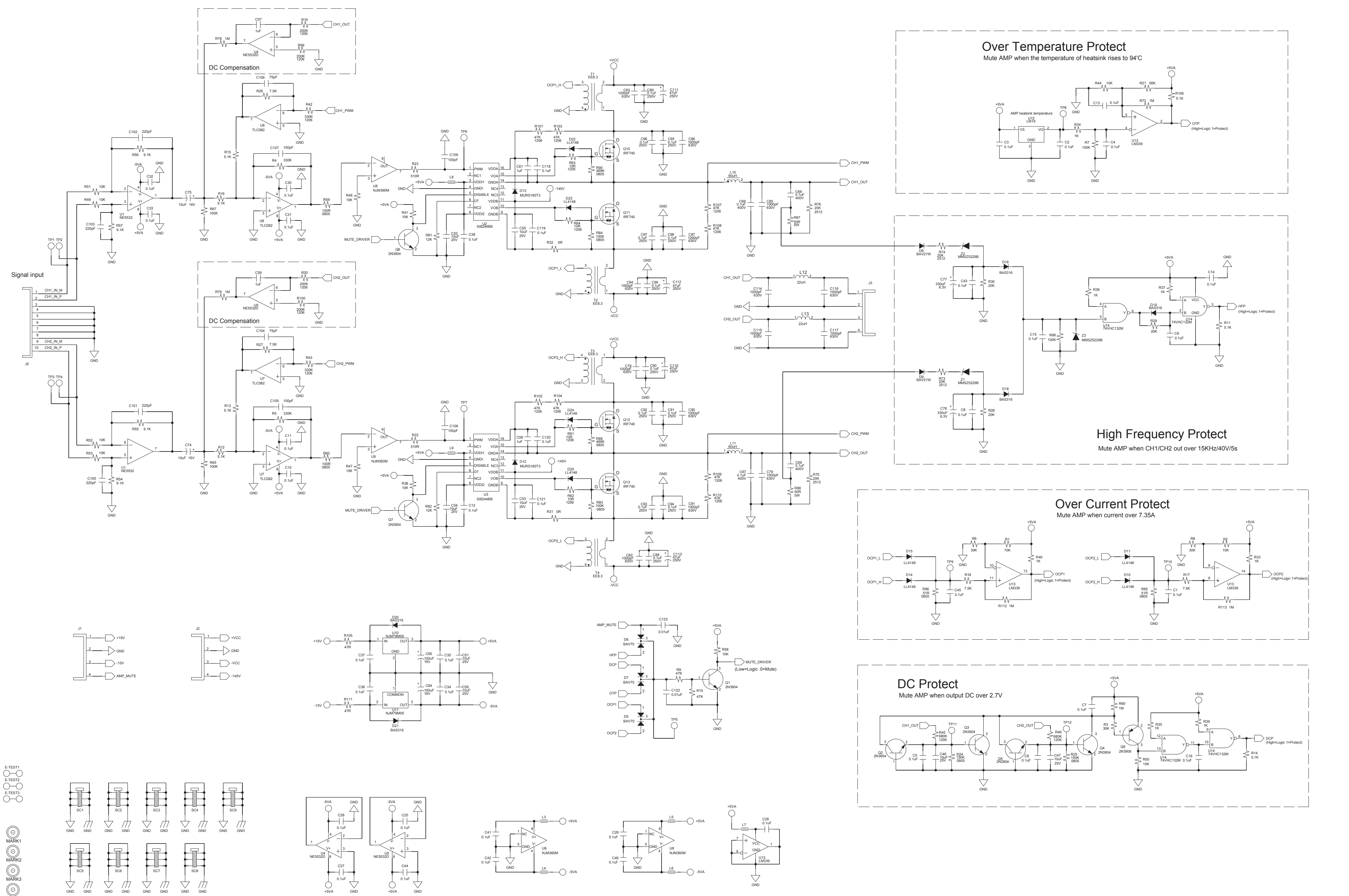
A

D

C

B

A

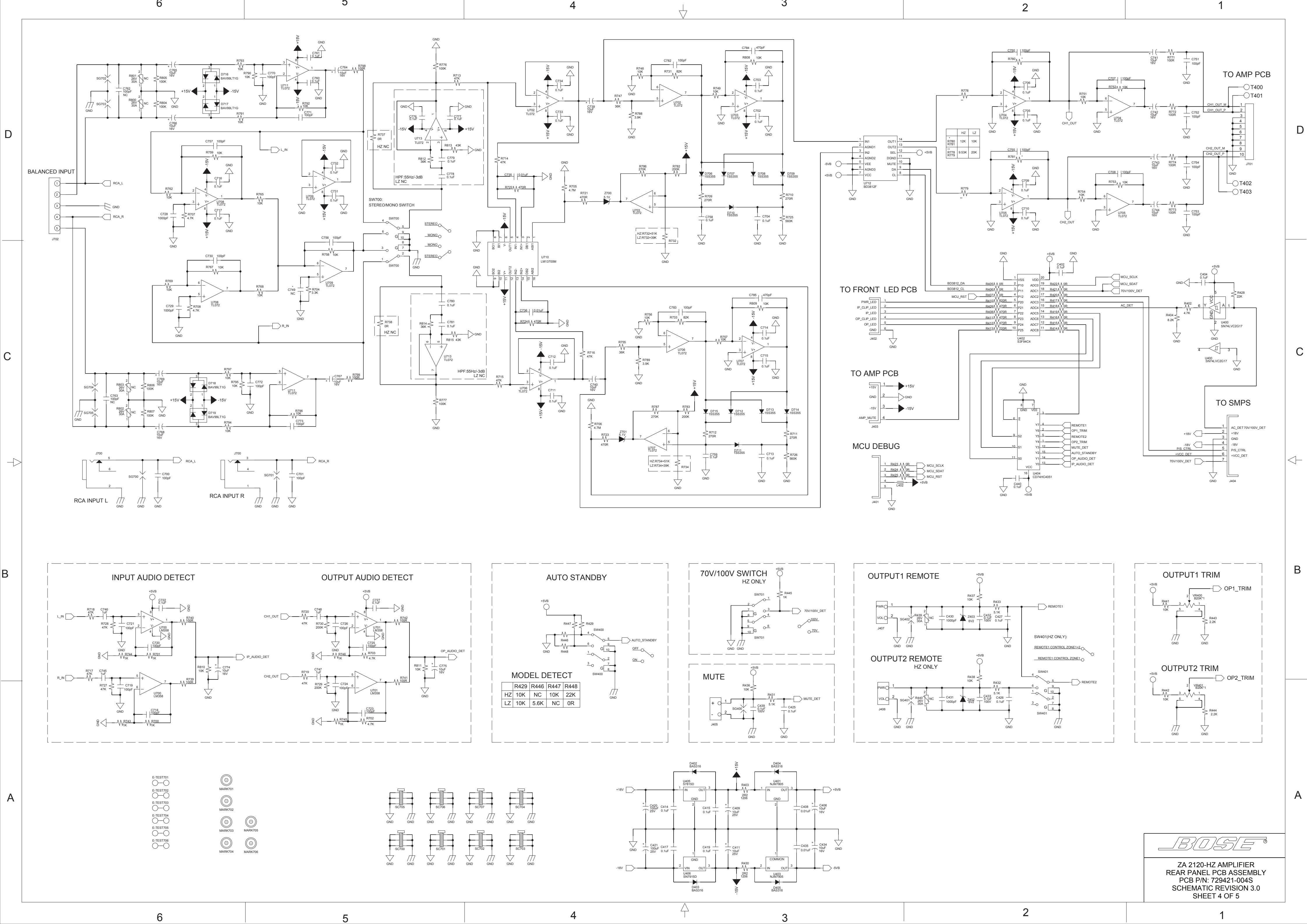


NOTES

1. Unless otherwise marked, all resistors are 1/16W, 0603
2. Unless otherwise marked, all capacitors' voltage is 50V
3. Amplifier gain = R42 / R26 * R15 / R16

BOSE

ZA 2120-HZ AMPLIFIER
AMPLIFIER PCB ASSEMBLY
PCB P/N: 729612-001S
SCHEMATIC REVISION 3.0
SHEET 3 OF 5





D

D

C

C

B

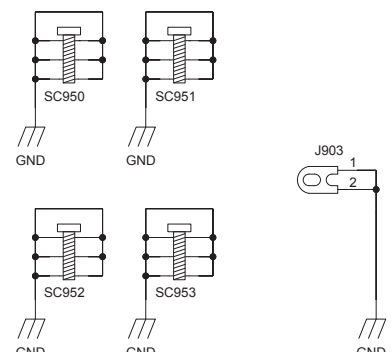
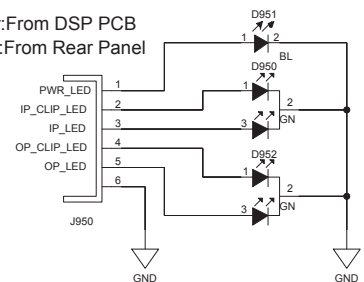
B

A

A

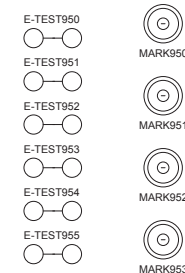
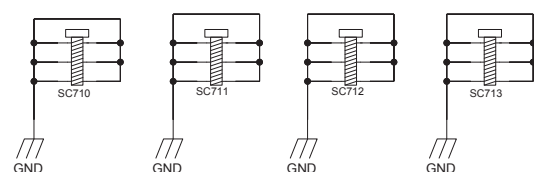
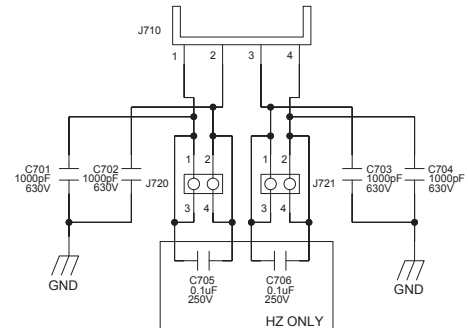
FRONT LED

Master: From DSP PCB
AMPO: From Rear Panel



SPEAKER OUTPUT

FROM AMP PCB



ZA 2120-HZ AMPLIFIER
 FRONT LED PCB ASSEMBLY
 PCB P/N: 729412-001S
 SPEAKER OUTPUT PCB ASSEMBLY
 PCB P/N: 729597-001S
 SCHEMATIC REVISION 3.0
 SHEET 5 OF 5

