

Instruction Sheet

T1 ToneMatch® Software Update Procedure

The Bose® L1® Updater Software allows a customer to update the T1 ToneMatch® Audio Engine DSP firmware, ToneMatch Presets and ToneMatch Factory Scenes, as well as the L1 Model II power stand system EQ and firmware, if connected.

As part of a repair, you should perform this update procedure to bring the firmware on the customer's unit up to the latest revision level.

Required Equipment

- Computer with a USB 1.1 or 2.0 port and Microsoft® Windows® 2000 or higher installed
- T1 ToneMatch AC power supply, product code 042533, or an L1 Model II power stand with a ToneMatch system cable.
- USB cable, Type A to Type B

Update Procedure

1. Download the latest version of the L1 Updater software to your computer from the Bose Musicians web site at http://www.bose.com/controller?url=/musicians/downloads/tonematch_downloads.jsp.

2. Connect one end of the USB cable to the T1 ToneMatch Audio Engine's USB port, located below the ON/OFF switch on the unit's rear panel. Connect the other end of the USB cable to a USB port on the PC.

3. Connect the customer unit to a T1 Tonematch AC power supply. The power supply connects to the RJ45 jack located to the right of the ON/OFF switch on the rear panel. If you don't have a T1 AC power supply, you can power the T1 using an L1 Model II power stand and ToneMatch cable. Refer to the owner's guide on the Bose Musicians web site for more information.

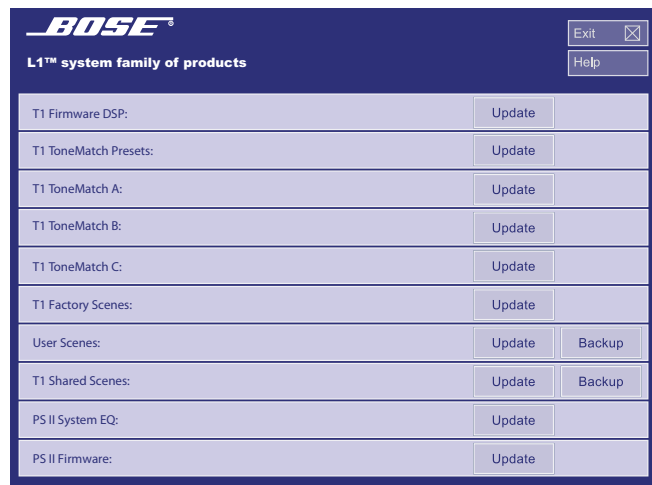
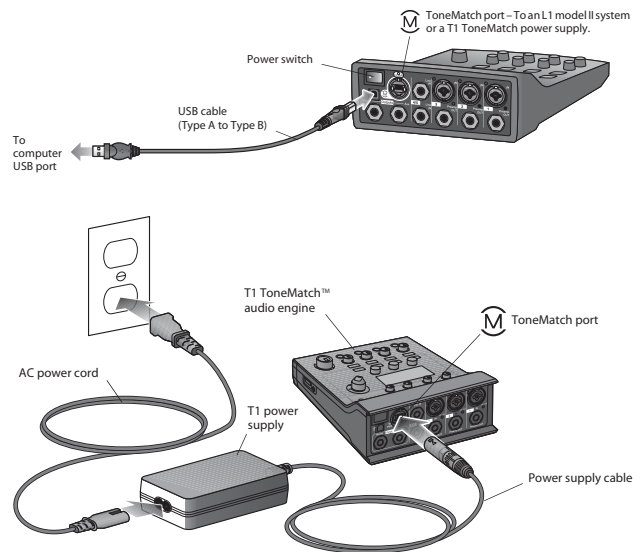
4. Turn on the customer unit. Verify that the computer recognizes the unit as a USB audio device.

5. On the computer, double click the L1 Updater icon to run the L1 Updater Software.

6. Follow the on-screen instructions to update the T1 Firmware DSP, T1 ToneMatch Presets and T1 Factory Scenes.

Notes:

- Do not update the T1 ToneMatch Preset Bank A, B or C. These are selected by the customer to be used on their specific equipment.
- Do not update the User Scenes or the T1 Shared Scenes. These are set up by the customer and any saved information will be lost if you update them.



L1 Updater Application Screen