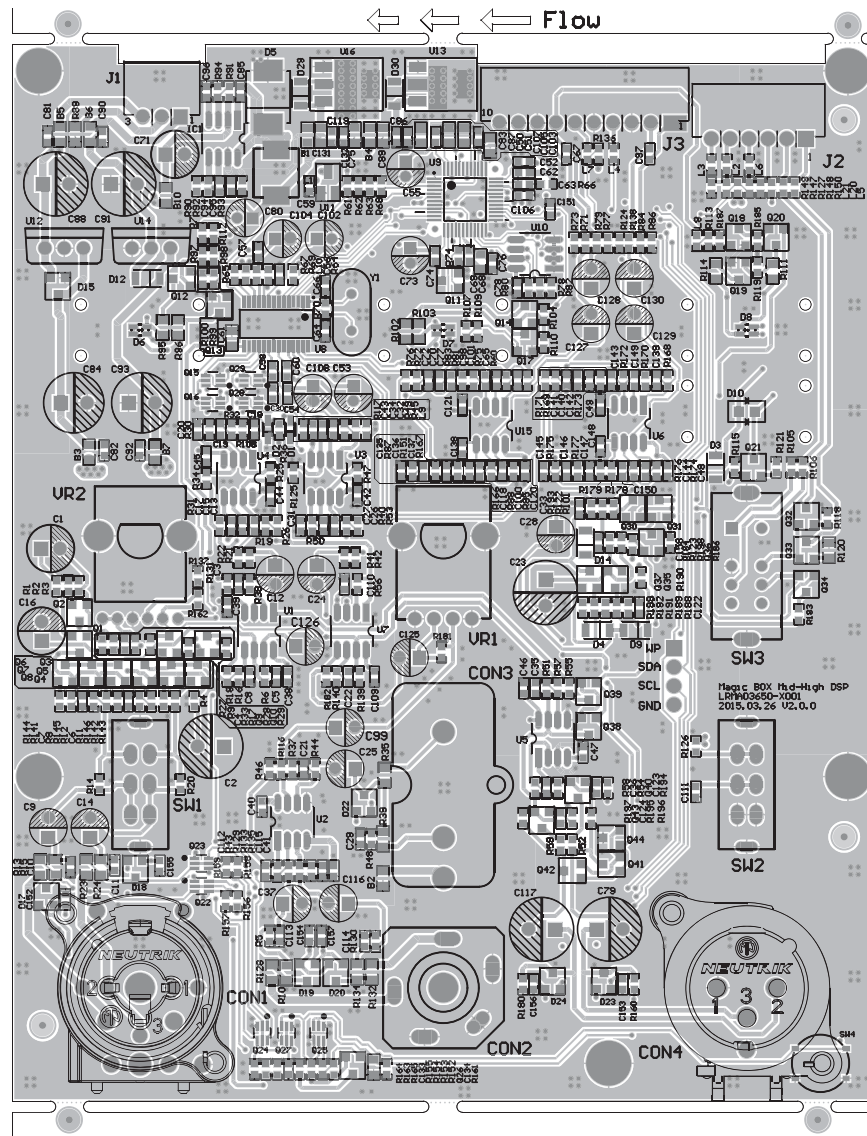


F1 Model 812 and F1 Subwoofer



Note: The Hall Effect Sensor and LED PCBs are not shown due to their simplicity.
SMPS / Amplifier PCB not shown because it is not repairable at the component level.

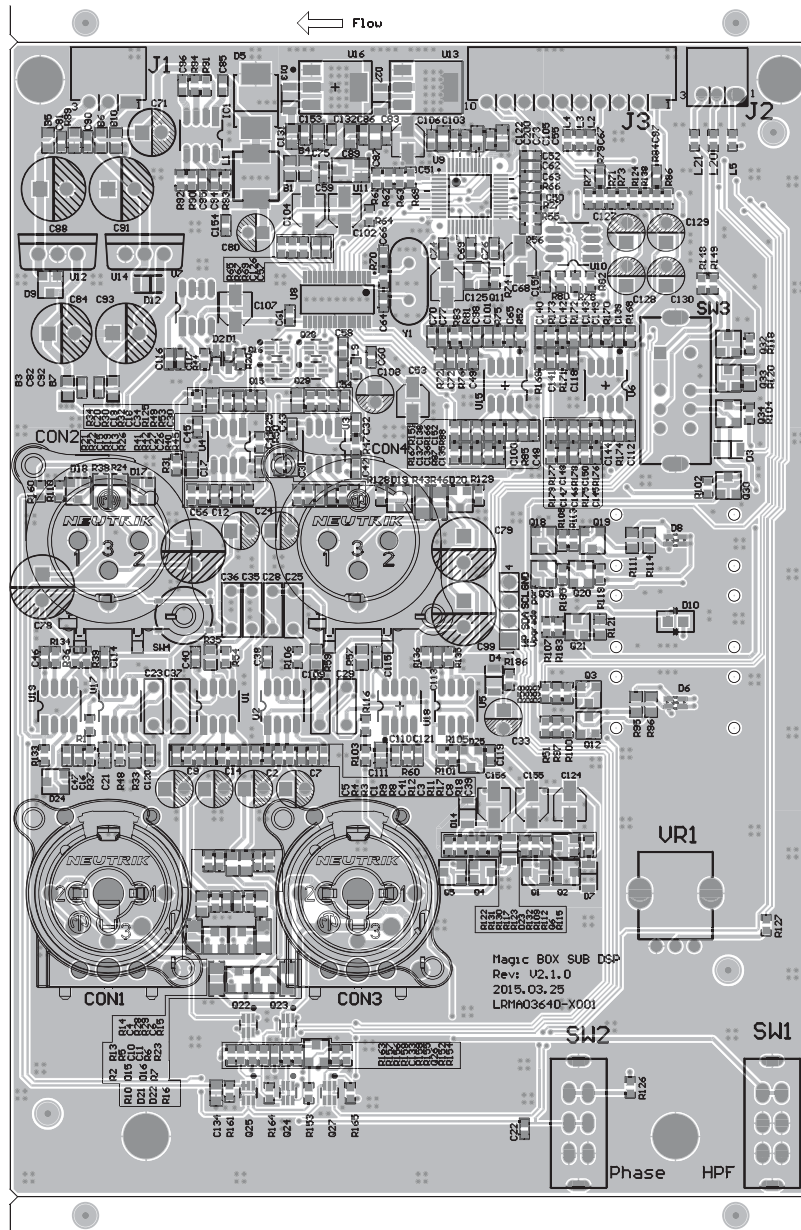
F1 Model 812 I/O-DSP PCB Assembly Topside and Etch Layout

F1 Model 812 and F1 Subwoofer



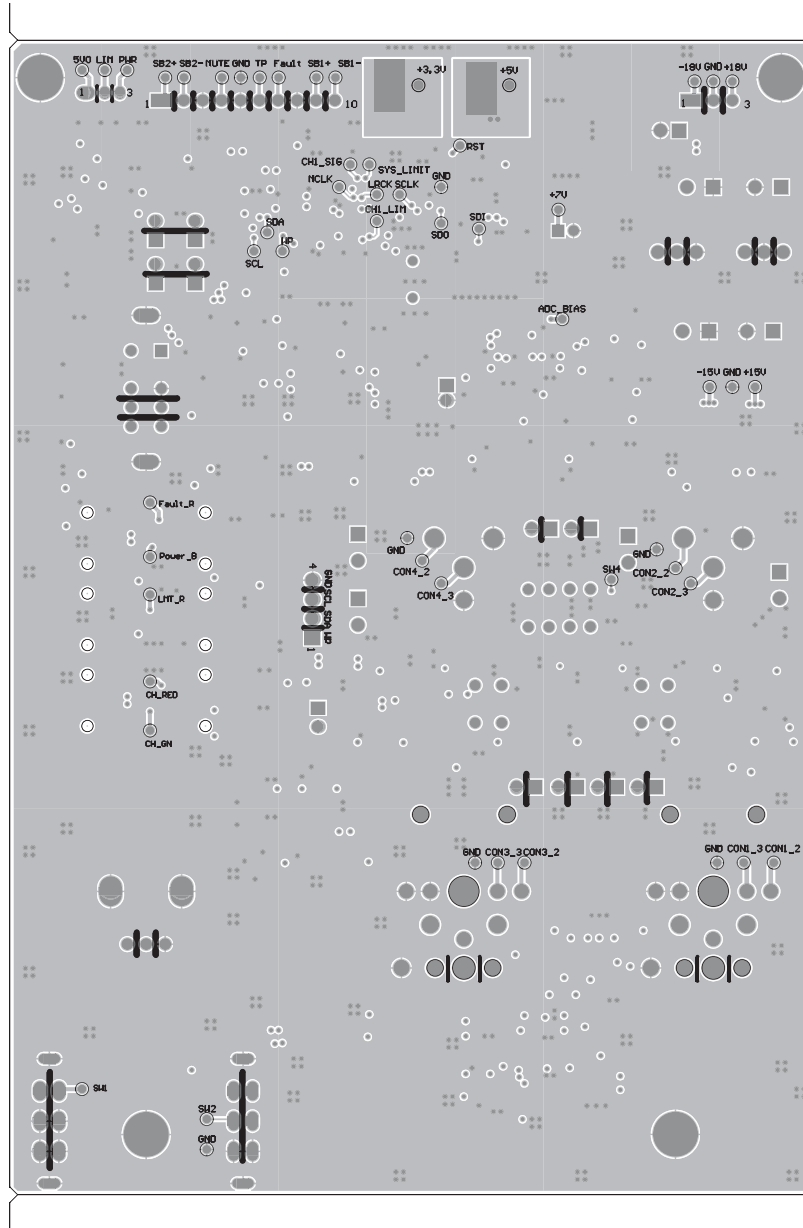
F1 Model 812 I/O-DSP PCB Assembly Bottomside and Etch Layout

F1 Model 812 and F1 Subwoofer



F1 Subwoofer I/O-DSP PCB Assembly Topside and Etch Layout

F1 Model 812 and F1 Subwoofer



F1 Subwoofer I/O-DSP PCB Assembly Bottomside and Etch Layout