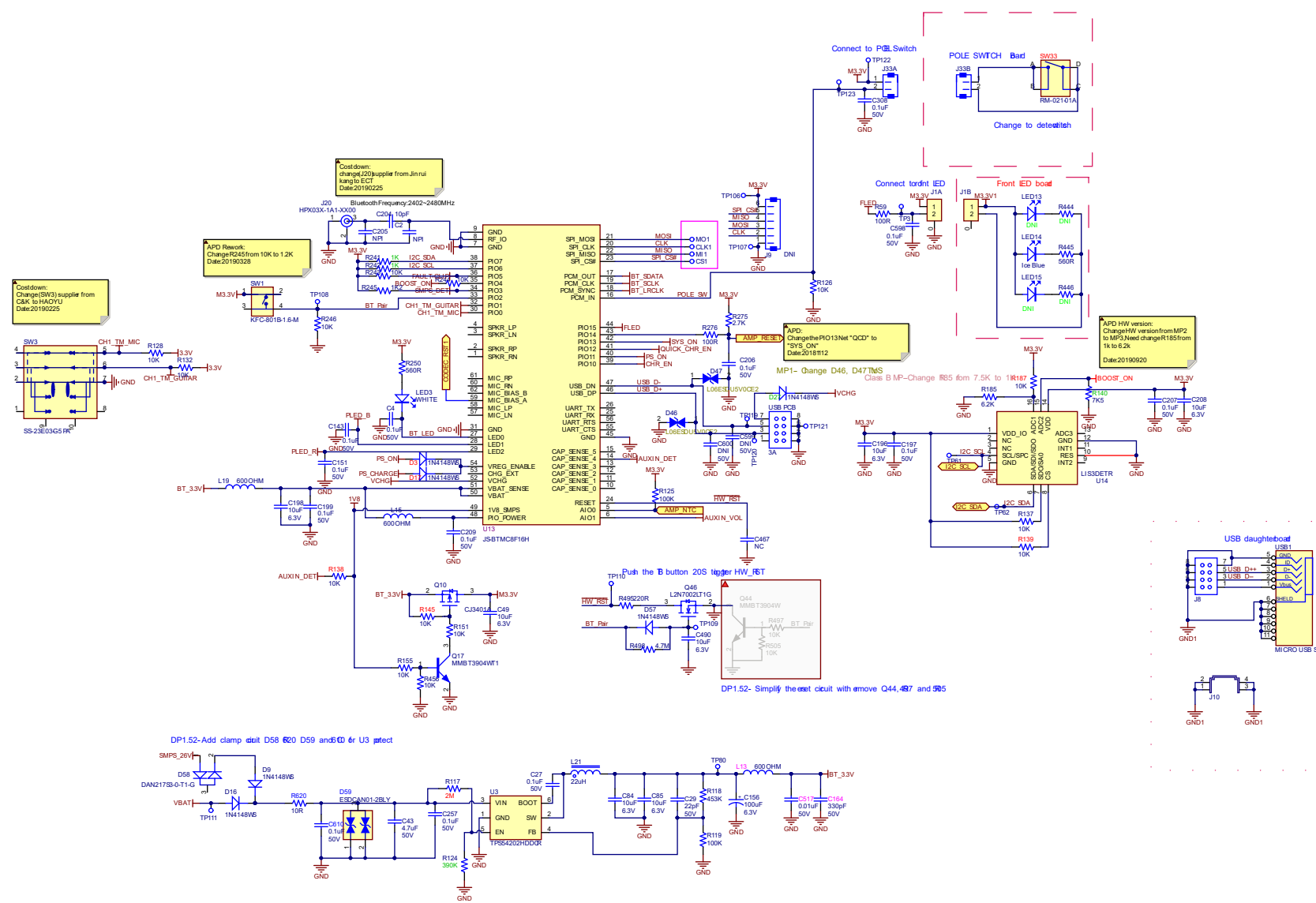
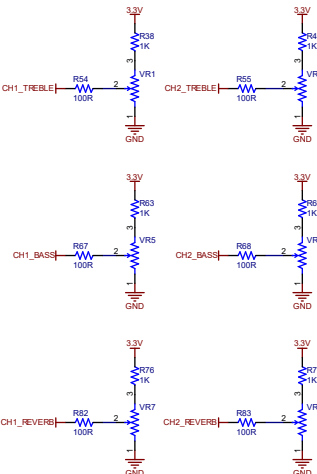


Version	Date	Description of Changes/Notes



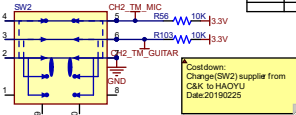
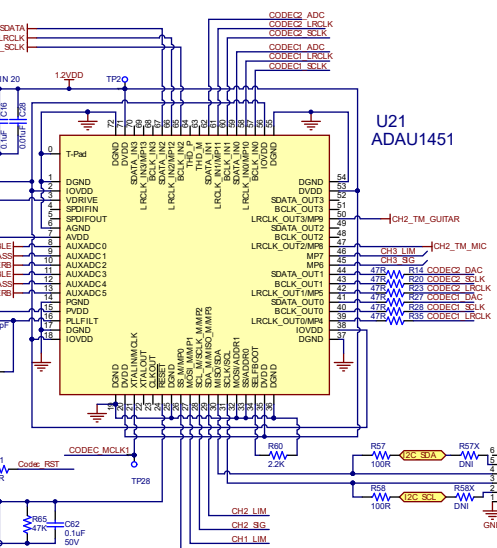
Version	Date	Description of Changes/Notes



Costdown:
change VR1,VR3,VR5,VR6,VR7,VR8,VR7 (2) supplier from ALPHA to IOL
Date:20190225

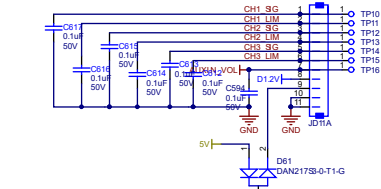
TextFunction	UI	Pin
CH1 Signal	MP0	LED
CH1 Qp	MP1	LED
CH2 Signal	MP2	LED
CH2 Qp	MP3	LED
CODEC1_LRCLK	N/A	MP4
CODEC2_LRCLK	N/A	MP5
CH3 Signal	MP6	LED
CH3 Qp	MP7	LED
CH2 TM MIC	SW	MP8
CH2 TM GUITAR	SW	MP9
Codec1 dsdRCLK	N/A	MP10
Codec2 dsdRCLK	N/A	MP11
BT_LRCLK	N/A	MP12
CHARGE MNA	N/A	MP13
CH1 TREBLE	pot	ADCO
CH1_BASS	pot	ADC1
CH1_REVERSE	pot	ADC2
CH2 TREBLE	pot	ADC3
CH2_BASS	pot	ADC4
CH2_REVERSE	pot	ADC5

APD:
Delete OCD connect to the Codec MP13 pin and delete the resistor R4 in series with net Date:2018112



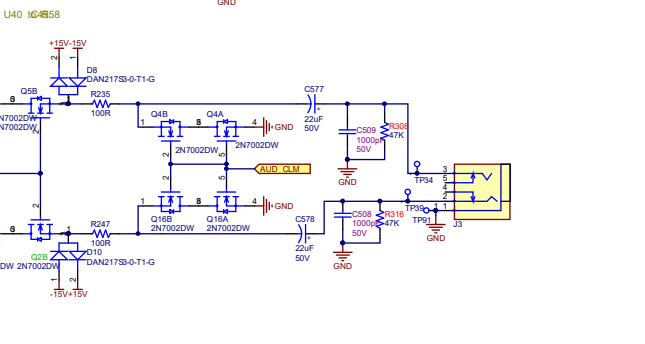
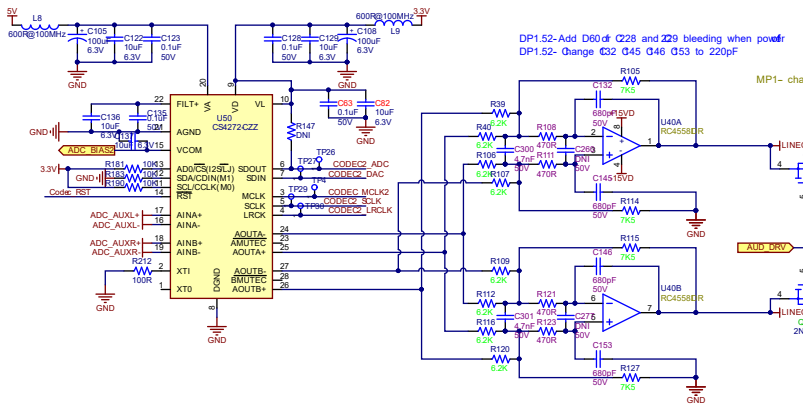
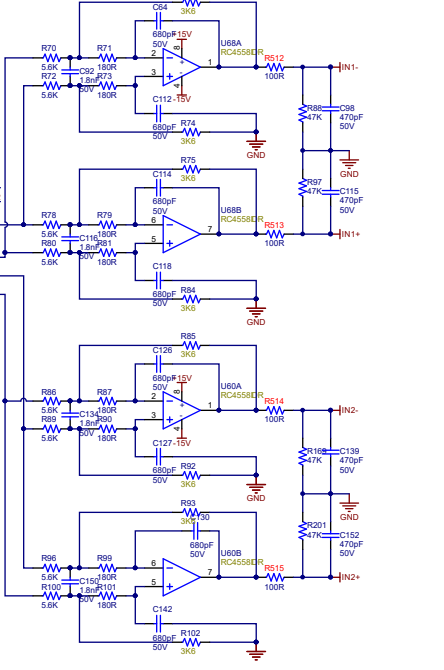
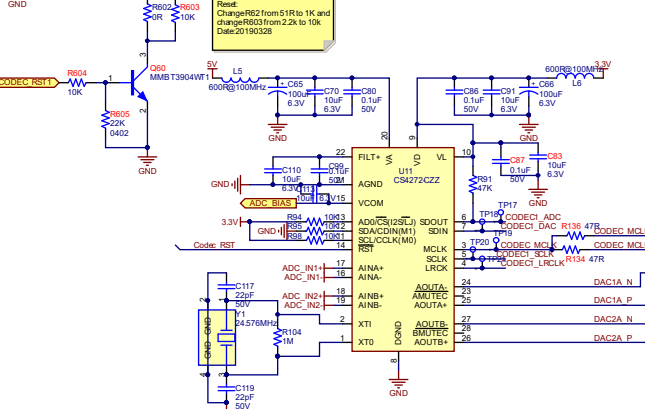
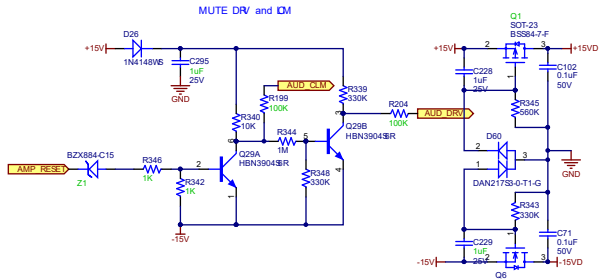
Costdown:
Change (SW2) supplier from C&K to HAQ03
Date:20190225

DP1.52-Add Q12-Q17, Change R3.3V into 3.3V D1.2V Pin 9 & 8



For debug as
Populate 5Vx and 5Bx instead of R7 and 5B
Make a 5pin cable to connect with switching 3.5mm phone jack
The USB connect to a 3.5mm plug with S&M&B
Plug the USBx online debug with ICD1100
Unplug the USBx keep Q2 keep going to other use

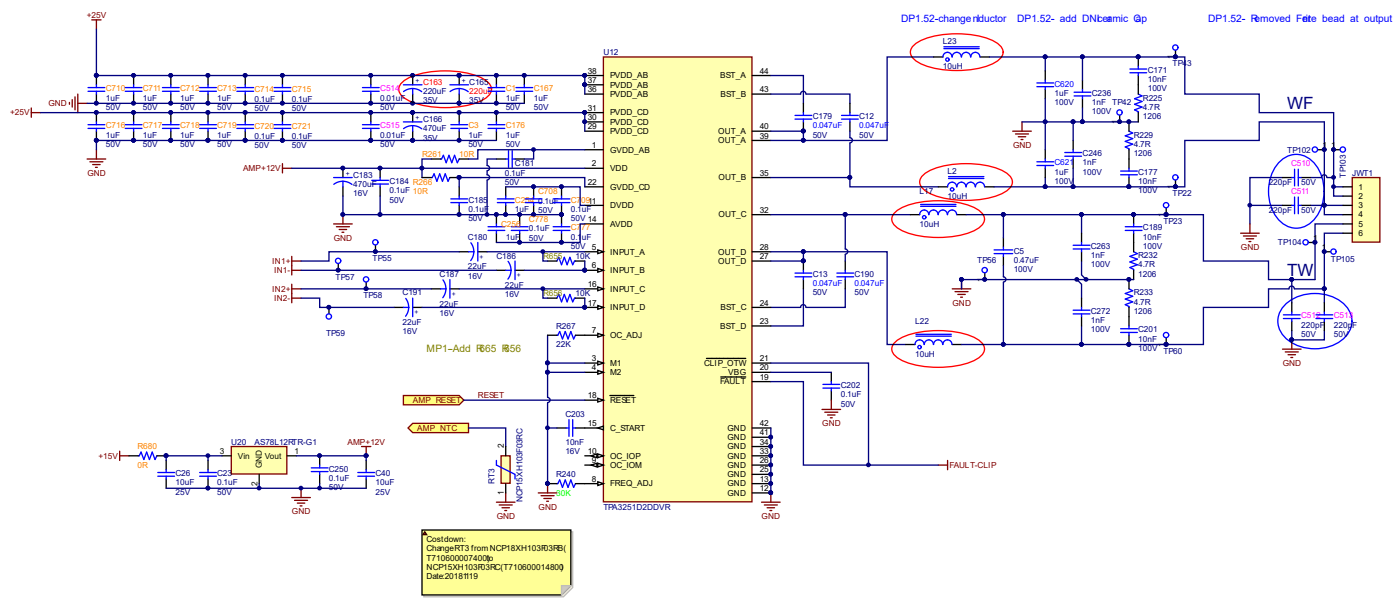
MP1- Change the feedbacks on the DAUFer from 3k to 3.6k to ~~4.5k~~ 1.5dB gain
MP1- Change U60, U68 to 4B5B



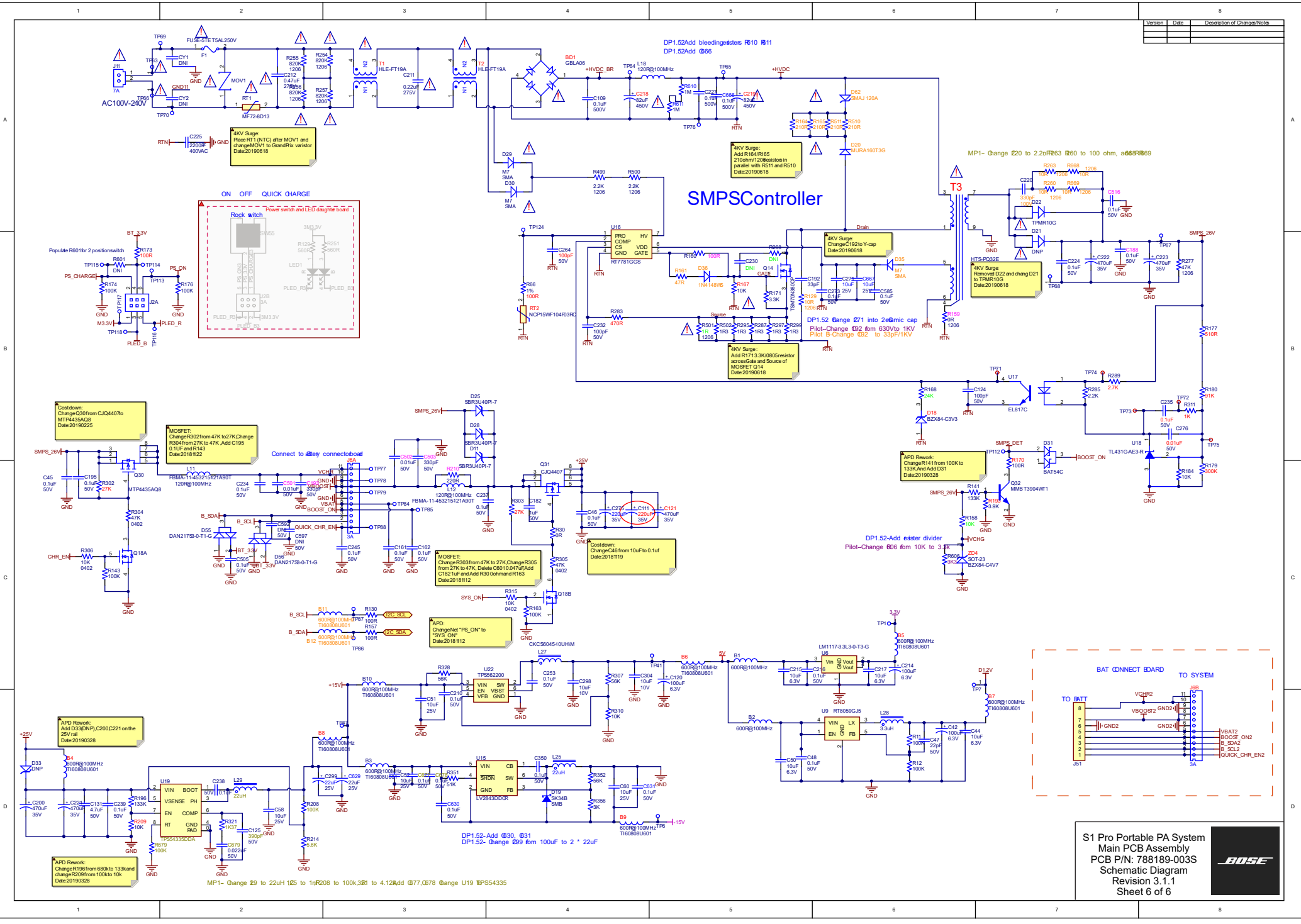
Plot- Change R08/R11/R12/R13 to 470R Q32/C45/C46/C53 to 680pF
Plot- Change C08/C09 to 1nF, C30/C31 to 4.7nF, dele06@C277



Version	Date	Description of Changes/Notes



Version	Date	Description of Changes/Notes



S1 Pro Portable PA System
 Main PCB Assembly
 PCB P/N: 788189-003S
 Schematic Diagram
 Revision 3.1.1
 Sheet 6 of 6

