

## **New Features:**

- **Expanded Serial Interface:** Adds full control of most signal processing modules & automatic feedback when module values change.
- **IP address flexibility:** IP address can be changed to any value.
- **Password protection:** Files and the ESP can be password protected.
- **CC-16 Preview:** CC-16 supports the "\*" preview mode similar to CC-64. Allows parameter sets and selector states to be scrolled through (previewed) without changing the audio.
- **CC-16 mute:** The CC-16 will now display Mute (instead of 00), when muted from the CSD or a parameter set.
- **Daylight Savings Time:** The system will automatically apply daylight savings time to your timers, if "Automatically adjust clock for daylight saving changes" is selected on your PC's Date and Time Properties.

## **Changes and Bug Fixes since 1.101:**

1. CC-16 and 64 synchronize to current level. When a CC-16 or CC-64's link is changed by invoking a parameter set, the settings of the object are no longer changed.
2. EDR card was not supported in V1.101, and has been fixed.
3. CC-16 default min setting is changed from -37 to -60, and the default maximum setting is changed from 0 to +12. This makes the CC-16 default settings the same as the CC-64.
4. Upload errors caused by characters such as '&', '/', '<LF>', ',', '>' and '<' have been fixed.
5. An issue where the DSP Resources button caused an error message if a parameter set's label ended with double quotation mark, has been fixed.
6. Some previous version files failed to open if a floating point value had been entered in a crossover. This has now been fixed.
7. An issue when all modules in the ESP view were selected, copied, and then pasted into another ESP view caused an exception has been fixed.
8. Preset and parameter set names can now accept ',' (comma).
9. Control of groups of input or output modules that span multiple ESPs has been fixed.
10. The CC-64 could not display labels with "&&". This has been fixed.
11. The output connector of an output module can no longer be connected to other modules.
12. An issue where the CC-64 Simulator did not update, displayed gain values after dynamic reprogramming, has now been fixed.
13. Various upload issues have been fixed:
  - 13.1. Configurations with groups in parameter sets that spanned multiple ESPs.
  - 13.2. Configurations with groups in parameter sets with Input/Output modules.
14. An issue where "Bypass all" for a grouped PEQ did not synchronize to the other PEQs in the group, has been fixed.
15. PEQ settings from v1.001 will now import properly.
16. Fixed a bug caused by creating a group of meters.
17. Version 1.1 prohibited the CC-16 & CC-64 Lock parameter from being added to a parameter set. This has been fixed.

## **Bose® ControlSpace™** **V1.2 Release Notes**

18. The labels of each ESP in the “Select ESP to Download” dialog box, have been corrected to all be unique.
19. Editing PEQ snapshots labels, has been fixed.
20. The GPI test button state was incorrect in simulator. This has been fixed: the OFF state now opens the output.
21. Group master fader now has  $-\infty$  level and will match the level of input/output modules.
22. The 4x4 Mic/Line Series II card and the original 4x4 Mic/Line card now appear as the same card in ControlSpace® designer™.
23. Parameter sets spanning multiple chassis invoked from serial port, only affected the main (“RTC”) ESP. This has been fixed.
24. Changing the CC-64 minimum or maximum volume levels causing inconsistent behavior has been fixed.
25. Matrix mixer display sometimes did not match the hardware state, this has been fixed.
26. A Mute level ( $-\infty$ ) has been added to the CC-16. Pressing “-” when the CC-16 is at level “01” will cause the CC-16 to go to mute level.
27. An issue where Designer™ was out of sync after uploading a design with using GPI, has been fixed.
28. Copying and pasting input & output slot parameters no longer overwrites the slot name.
29. An issue where parameter sets spanning multiple chassis invoked from the serial port, was not recalling properly - has been fixed.
30. An issue with systems that have multiple chassis’ where recalling parameter sets that included groups in affected settings in another chassis, has been fixed.
31. An issue where DSP resources displayed an incorrect value (lower), has been fixed.
32. An issue where copying parameters from one PEQ to another, did not update the Q/BW setting, has now been fixed.

### **Known Issues with 1.2:**

1. We have not fully tested with Vista. Some issues have been found and will be addressed in future releases as we move to full support of Vista.
2. Some files created in 1.001 and 1.101 may not import properly or cause an error when uploaded. Please review the section File Open/Upload Errors below for methods to fix these files. Most of these issues pertain to “illegal” characters (&, /, <LF>, ‘, ‘>’, <) that were used in module or parameter set names. 1.2 now supports these characters but may have trouble importing a pre-1.2 version file that includes these characters.
3. In rare cases, it is possible to create a file that will not upload. The cases we have seen involved complicated files, typically containing many signal processing modules creating long chains (10+ modules in series) and with feedback paths (after a long sequence of modules the signal is fed back to an earlier module creating an even longer “chain”). All of these files are recoverable by rearranging the modules. See item 5 in the File Upload Issues section. We are working on this issue and hope to have a fix shortly.

## File Open/Upload Errors

### File Opening Issues:

#### 1. File won't open due to invalid characters in the design:

The design will not open in 1.2 if unsupported characters were used in module labeling or somewhere in the design. An error message "**Object not set to an instance of an Object**", "**Unexpected Token**" or "**Invalid Attribute Character**" may appear when opening the file in 1.2. Designs created in CSD v1.001 with certain characters such as '&' and '/' and '>' or '<' in parameter set names or module names will not import properly.

**Workaround:** Open the file in v1.001 or the version of CSD it was created, and remove the special characters, then reopen in the latest version of CSD.

#### 2. File opens, but Wiring not present:

When opening a file with a version different than the authored version, the wiring may not be present in the design view. The error message "**Object reference not set to an instance of an object**" may appear when opening. If this occurs, close ControlSpace® and open the file in the original authored version.

**Workaround:** Open the file in the version of CSD that it was created in. Save the file, overwrite or rename, and then open in the latest version of CSD.

### File Upload Issues:

In most cases, a file that opens will upload without any issues. In some cases, the file will not upload unless the hardware indicated in the design matches the hardware found.

#### 1. Duplicated module ID present in the design:

When opening a design in a new software version, a module ID may be duplicated to another module of the same type. The "**CalcEspResources.exe Netlist Error**" error message will appear in the Debug window, either when attempting to go online or checking DSP resources.

**Workaround:** In this case it is necessary to single out the conflicting module and delete or replace it. The debug window will indicate which type of module is duplicated (there may also be non-possible wiring, i.e. 2 wires to a gain input), but if there are multiple modules of this type, it may be necessary to delete/replace each separately to determine which is the problem. The new version of this software will not allow the user to create files with this error.

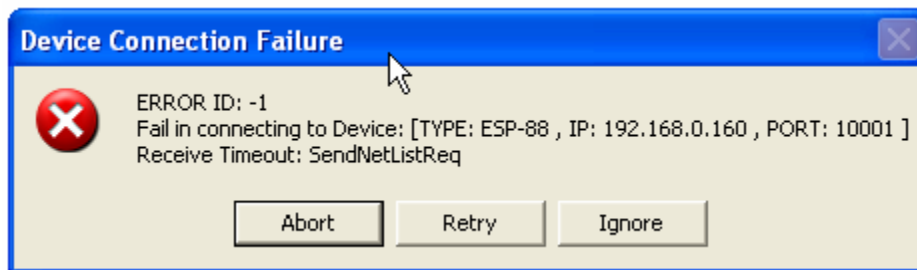
**2. CC-64 display is incorrect or sporadic:**

When uploading a new design or changing a design, the CC-64 controls may not be entirely refreshed during upload.

**Workaround:** Upload a blank design to the CC-64 to “reset” the CC-64. This will refresh the display, and it will be correct after uploading the new design file.

**3. Designs with Timers/Presets in CSD v1.001:**

Some designs created in version 1.001 using timers or presets may cause an upload error. A timeout message is displayed:



The power light may turn red and the ESP will require a reboot. Versions 1.1 and later, do not create files with this error.

**Workaround:** Open the file in v1.001 or the version of CSD in which it was created; delete the timers or preset and save the file. Open the file in the latest version of CSD and recreate the timers or presets.

**4. Long parameter set names in the CC-64 custom label area, cause upload errors:**

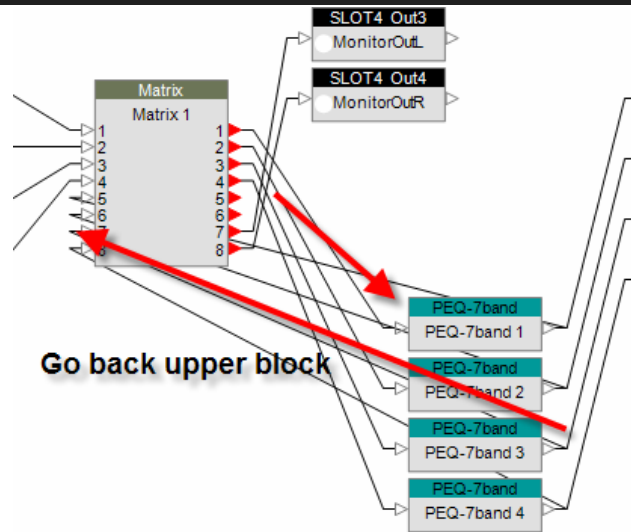
Designs created in CSD v1.001 with parameter set names longer than 32 characters or that use very long names in the CC-64 custom label area, will cause an upload error.

**Workaround:** Open the design file in the version of CSD in which it was created. Shorten the long names, save the file, and open in the latest version of CSD. Software versions later than CSD v1.1 prevent this and will not create files with this error.

**5. Some designs created in 1.101 will not upload due to the signal processing block order:**

In some cases, designs created in v1.101 cause an upload error based on their complex signal flow. Often adding a matrix mixer or compressor solves the problem.

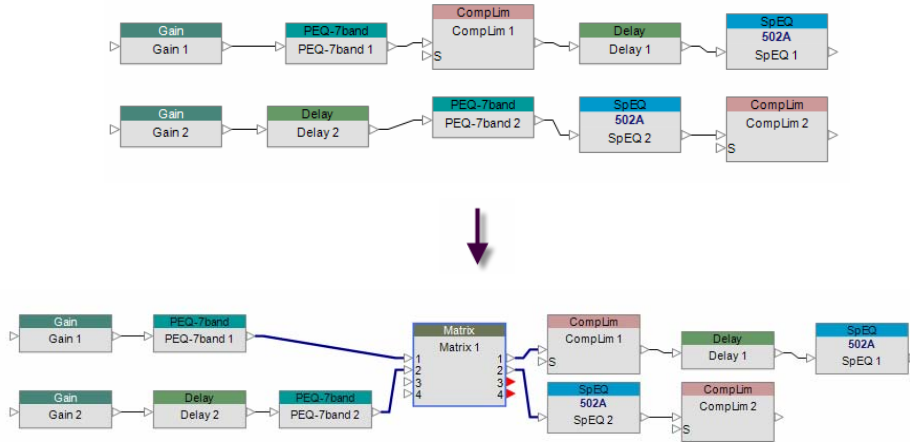
# Bose® ControlSpace™ V1.2 Release Notes



In the example above, PEQs are routed back into an upper block. This requires more time to allocate DSP resources and can cause timeout upload errors. Other complex signal flow can cause issues also.

**Workaround:**

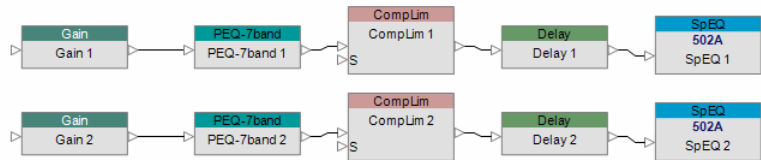
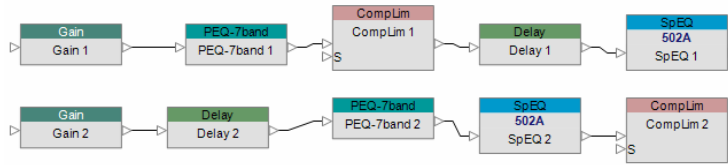
1. Gather/combine similar processing blocks; Ex. 4 2x1 mixer can be combined into an 8x8 mixer.
2. Try a pass-through matrix to change the signal flow order.



Insert pass through matrix.

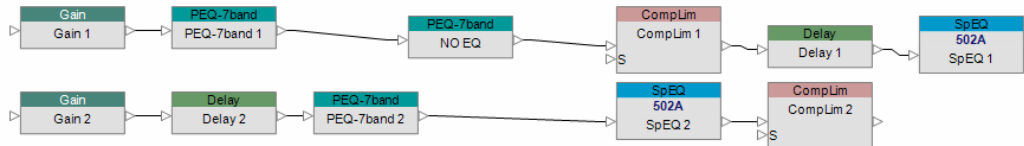
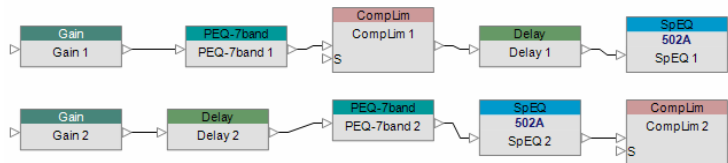
3. Place signal processing blocks in the same order; instead of processing similar modules at different times, process all similar modules together. Also, the order that certain modules are processed can affect uploading. An example is having compressors directly before output modules, which can cause upload errors.

# Bose® ControlSpace™ V1.2 Release Notes



Recommended

4. Add a bypassed module, e.g. PEQ set to bypassed, to the signal path.



5. Remove unnecessary signal processing modules, e.g. meters.