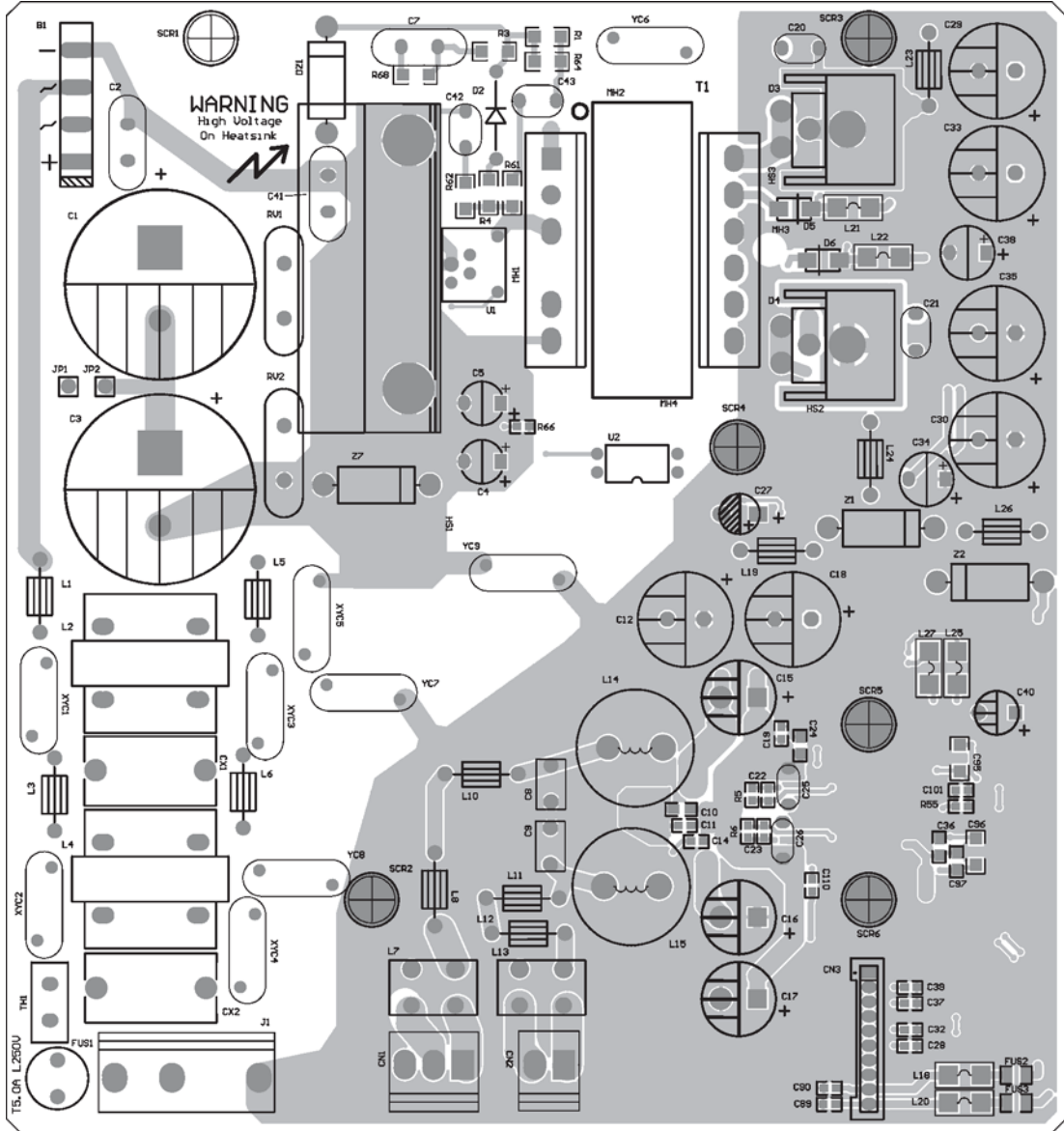
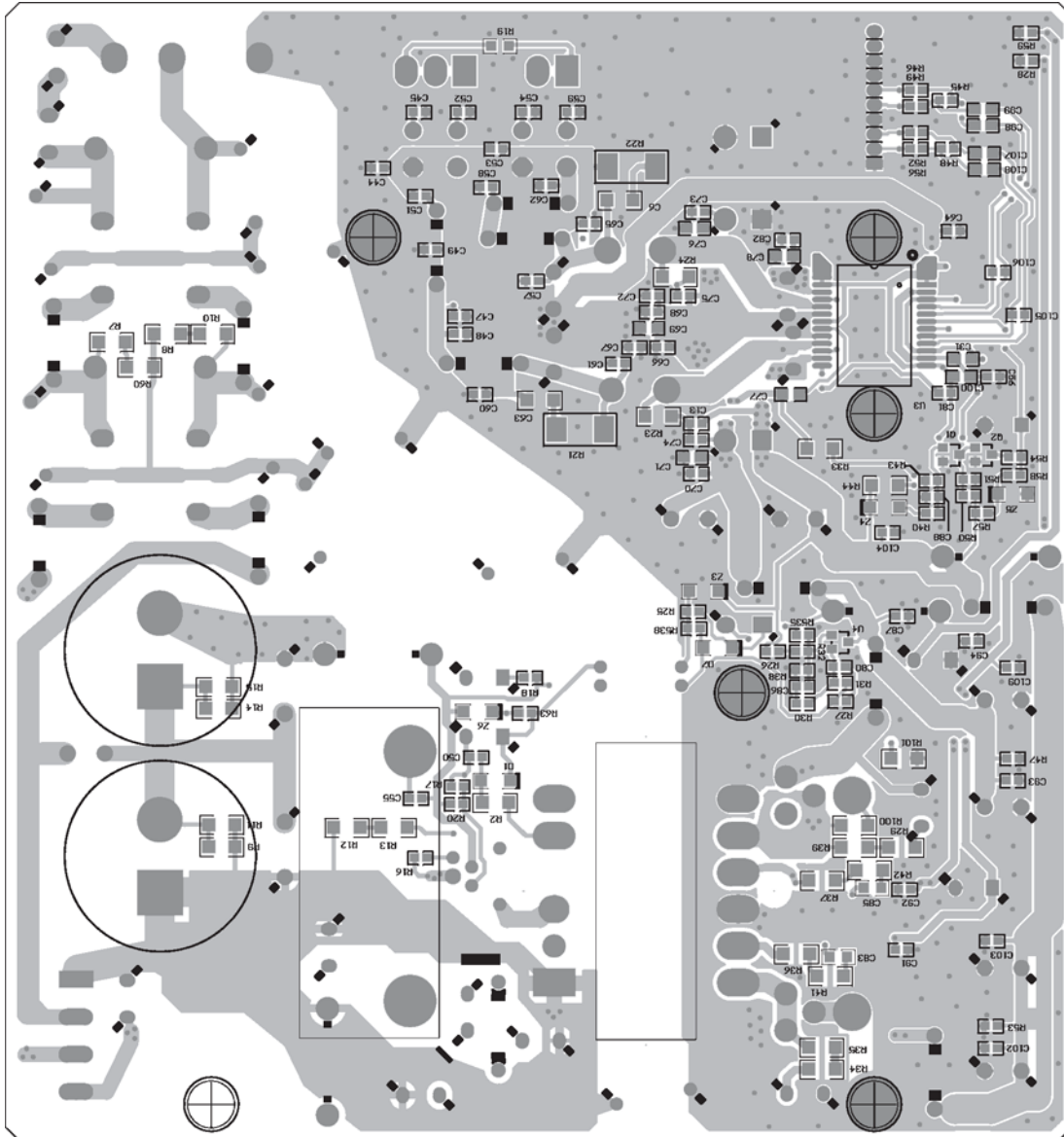


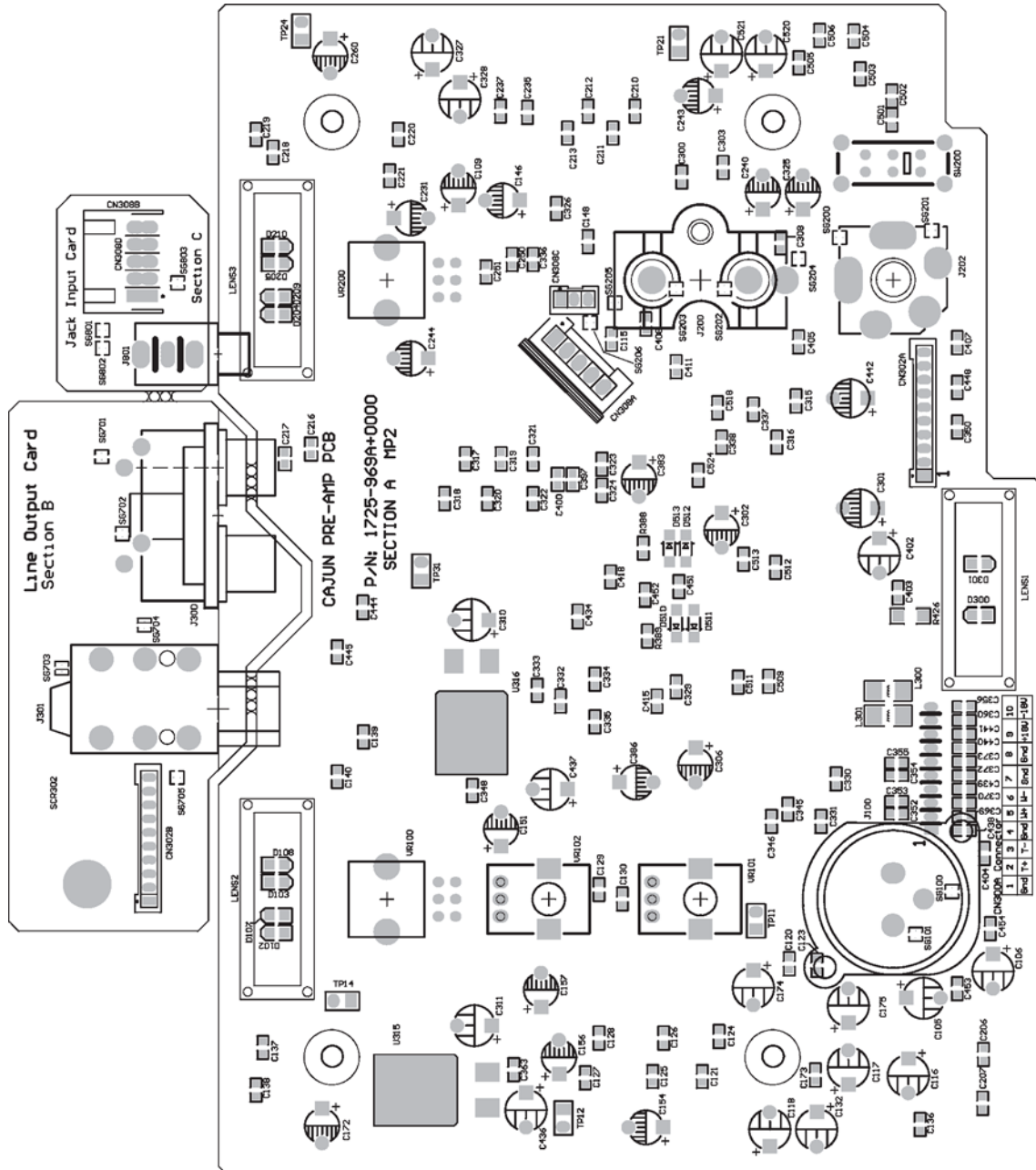
L1 Compact Board Layout Diagrams



Power Stand Amplifier / SMPS PCB P/N: 317372-000S Topside Etch and Layout

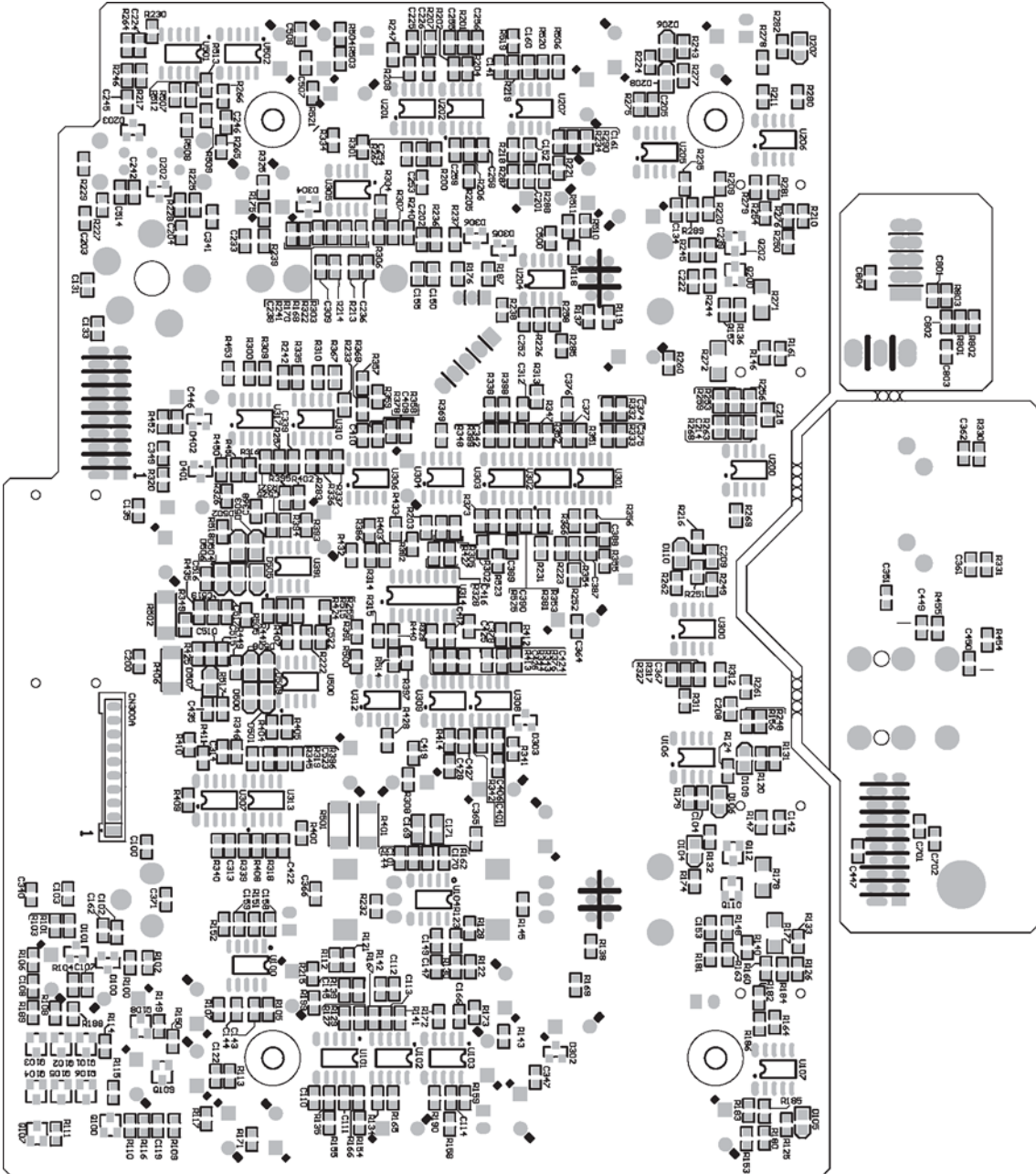


L1 Compact Board Layout Diagrams



Power Stand Input / Output Board Top P/N: 319966-000S;
 3.5mm Input PCB P/N: 319967-000S; and Line Output PCB P/N: 319968-000S
 Top Silkscreen and Component Layout Diagrams

L1 Compact Board Layout Diagrams



Power Stand Input / Output Board Top P/N: 319966-000S;
3.5mm Input PCB P/N: 319967-000S; and Line Output PCB P/N: 319968-000S
Bottom Silkscreen and Component Layout Diagrams