



**BOSE**

PROFESSIONAL

CASE STUDY - RETAIL | POWISŁE POWER PLANT



## REVITALIZATION FOR A ONE-OF-A-KIND DEVELOPMENT

Warsaw, Poland's Powiśle Power Plant, developed by Tristan Capital Partners and White Star Real Estate, is a shopping destination and experience unlike any other in the world.

Set inside an old power plant no longer in service — but that saw significant use during the Warsaw Uprising during World War II — the Powiśle Power Plant is described by its creators as “a place where the spirit of history has found peace”.

However, to make it a home for modern retailers, restaurants, apartments, offices and hotel, the space needed solutions that could bring powerful audio and elevate the overall atmosphere without detracting from its significant historical heritage.

In terms of design, this was accomplished with traditional crafting methods and the reclamation of items from the original plant buildings for interior design elements. The audio solution, though, would need a little more creativity.

## BLENDING THE HISTORICAL PRESENCE WITH MODERN, FLEXIBLE AUDIO

System integrator Bestau was faced with a tall order.

The Powiśle Power Plant presented a wildly varied acoustic environment, with large, open spaces, rigid steel structures,

glazed elements and more contributing to the difficult task at hand of providing both consistent background music for the entire facility and powerful, flexible audio capabilities for concerts and events.

The final system also couldn't take anything away from the historical integrity of the plant. It was critical that the visual aesthetic of the Powiśle Power Plant be preserved and that any audio equipment installed didn't detract from the desired atmosphere.

“The project was a great success. The sound system meets our expectations and fits discreetly into the atmosphere of the place. Despite the complexity of the project and the system's capabilities, its management is intuitive and allows us to be flexible and adapt to current events.”

– Kalina Palczewska  
Senior analyst, innovation  
White Star Real Estate

To make this happen, Bestau would need to work within two “tracks,” or rails, running parallel down the length of the space — bringing a list of challenges in achieving proper coverage, sound levels, mounting solutions and more.



What's more, the different areas throughout the space identified different audio needs. The Market, a space for events like concerts and presentations, offers a post-industrial, raw interior design that couldn't be hindered by a solution requiring arrays that were obviously visible.

The Food Hall is similar, hosting diners by day and concerts by night, while the entry space, complete with fountains, hosts outdoor events and required synchronized audio with water shows. Finally, the Beauty Hall is a very tall, open space with few mounting options available, yet it still needed an audio solution that allowed individual tenants to adjust their retail zones within the supervision of a main audio control system.

## BOSE PROFESSIONAL POWERS THE REVITALIZATION OF THIS HISTORIC LANDMARK

To meet this wide variety of needs, Bestau turned to Bose Professional solutions and a holistic sound system based on the Dante® network standard. In total, the space needed six server rooms and multiple zone controllers to provide adequate control, management and flexibility.

In the Food Hall, the ControlSpace EX-1280 audio processor is located in the main rack cabinet and helps oversee ArenaMatch AM40 loudspeaker, six ArenaMatch Utility AMU206 loudspeakers and eight AMU105 speakers.

It's all powered by a PowerMatch 8500N and a PowerMatch 8250N power amplifier.

In the Market, 10 EdgeMax loudspeakers allow for placement in the room's corners providing the 90- and 180-degree sound coverage. Dante wall plates power automatic signal detection, which configures the speakers to allow sound to come from whichever stage is in use — left, right or center.

The Beauty Hall leverages 42 DesignMax DM5C loudspeakers in custom pendant enclosures that match the area's aesthetic, which are powered by a PowerMatch 8250N and two PowerShare PS604D power amplifiers.

Finally, the outdoor square with the Fountains is outfitted with eight ArenaMatch Utility AMU206 loudspeakers to provide wide, consistent, rich coverage.

## A UNIQUE EXPERIENCE READY TO SERVE CONSUMERS AND GUESTS FOR YEARS TO COME

The challenge was great, but Bestau and Bose Professional were up to the task.

The system uses a variety of solutions to offer the perfect capabilities for each one of the unique spaces, plus simple programming — which also features automatic startup and power-down matching the space's operating hours — making it easy to get the most from this revolutionary audio system.



The solution also leveraged Bose Professional’s Modeler sound system software to ensure the sound in any given location would be consistent, powerful and flexible despite unique geometry and materials used within the spaces.

The result is a historic location that’s been brought back to life alongside its original personality, making it a unique attraction ready to bring a singular experience to visitors for years to come.

“Due to the historical nature of the project, it was not sufficient for the designed audio solution to provide the highest quality sound — it was equally important for us to integrate the sound system while maintaining the coherence of the concept and its uniqueness,” said Kalina Palczewska, senior analyst, innovation for developer White Star Real Estate. “The entire system has been designed based on our exact and specific requirements.”

“The project was a great success. The sound system meets our expectations and fits discreetly into the atmosphere of the place. Despite the complexity of the project and the system’s capabilities, its management is intuitive and allows us to be flexible and adapt to current events.” ■

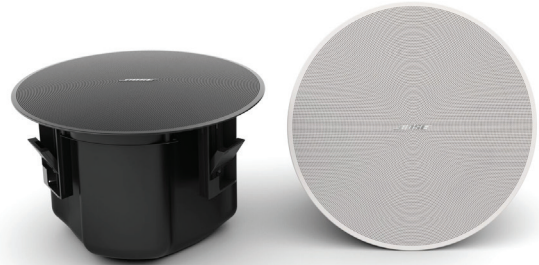


PARTNER: **Bestau**

Bestau, a leader on the audio-video market in professional audio-visual systems, sets trends which Polish competitors are eager to follow.

## SYSTEM COMPONENTS

- ArenaMatch AM40** loudspeaker
- ArenaMatch Utility AMU105** loudspeaker
- ArenaMatch Utility AMU206** loudspeaker
- DesignMax DM3SE** loudspeaker
- DesignMax DM5C** loudspeaker
- DesignMax DM5SE** loudspeaker
- DesignMax DM8CSub** loudspeaker
- EdgeMax EM90** loudspeaker
- EdgeMax EM180** loudspeaker
- F1 Model 812** flexibly array loudspeaker
- F1 subwoofer**
- PowerMatch PM8500N** power amplifier
- PowerMatch PM8250N** power amplifier
- PowerMatch PM4250N** power amplifier
- PowerShare PS604D** power amplifier
- PowerShare PS404D** power amplifier
- ControlSpace EX-1280** digital signal processor
- ControlSpace CC-64** control center
- ControlCenter CC-3D** digital zone controller
- ControlCenter CC-2D** digital zone controller
- ControlCenter CC-1D** digital zone controller

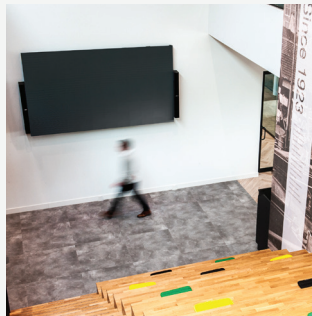


### **ArenaMatch**

Bring proven DeltaQ sound quality and flexibility to outdoor installations — sports stadiums, arenas, outdoor entertainment centers, and more. Rated for direct-exposure outdoor installations, ArenaMatch DeltaQ modules make it easy to create outdoor loudspeaker arrays that bring consistent, intelligible sound to every listener. Nine coverage patterns are available. Choose from modules with 10°, 20°, or 40° vertical coverage and easily swap between 60°, 80°, or 100° horizontal waveguides to build arrays that are lighter, require less installation time, and can lower overall system costs by delivering full coverage with fewer modules.

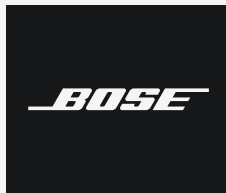
### **DesignMax**

A complete loudspeaker assortment to enhance any space, DesignMax loudspeakers offer rich lows and clear, intelligible highs — along with premium aesthetics that complement any commercial sound installation. Choose from 12 models — including coaxial two-way loudspeakers, subwoofers, and compact models for tight spaces — great for both background and foreground audio applications. And with several outdoor IP55-rated models, it's easy to create complete systems that bring instantly impressive sound anywhere, indoors or outside. QuickHold mounting mechanisms make installation efficient, reducing strain and hassle — and saving substantial time. And with both black and white versions available, DesignMax loudspeakers integrate seamlessly with any décor.



Bose Professional serves many different markets, delivering great sound in venues all around the world — performing arts centers, theaters, places of worship, stadiums, restaurants, schools, retail stores, hotels, and corporate buildings.

We know that our pro audio customers depend on us in a unique way. This is your business, your reputation, your livelihood — not just an amp, not just a loudspeaker. So, when you buy a Bose Professional product, you get the full weight of the global Bose Professional team behind you — our time, support, and attention. We see every purchase as the beginning of a partnership.



PROFESSIONAL

**BOSEPROFESSIONAL.COM**