

BOSE


L1 Pro32 Portable Line Array



CONTENTS

Title	Page
SAFETY INFORMATION	3
ELECTROSTATIC DISCHARGE SENSITIVE (ESDS) DEVICE HANDLING	4
WARRANTY	4
PART LIST NOTES	4
PRODUCT DESCRIPTION	5-8
PACKAGING PART LIST	9
Figure 1. L1 Pro32 Packaging Exploded View	10
MAIN ASSEMBLY LIST, L1 Pro32 Power Stand	11-14
Figure 2. L1 Pro32 Power Stand Exploded View	15
MAIN ASSEMBLY LIST, L1 Pro32 Array Speaker	16-17
Figure 3. L1 Pro32 Array Speaker Exploded View	17
MAIN-I/O PCB PART LIST	18-26
POWER-AMP PCB PART LIST	27-32
VOLUME PCB PART LIST	33
DISASSEMBLY PROCEDURE	34-38
Figure 4. PC Sheets & Rubber Feet Location	34
Figure 5. PC Sheets & Rubber Feet Removal	34
Figure 6. Bottom Cover Screws Removal.....	34
Figure 7. Bottom Cover Removal	35
Figure 8. Detach Cables Connection & Ferrite Bead Position	35
Figure 9. Main-I/O Green Adhesive & Screws Removal	35
Figure 10. Volume Knobs & Top Cover	35
Figure 11. 4 Jacks and Jack Socket Nut Removal	36
Figure 12. PP Sheet & Bracket Removal	36
Figure 13. Detach Cables Connection.....	36
Figure 14. White Glue & Screws Removal	36
Figure 15. Volume Board Screws Removal.....	37
Figure 16. Both Ends of Endcaps Screws Removal.....	37
Figure 17. One Endcap Removal.....	37
Figure 18. Array Grille Removal & Gasket Material Location.....	37
Figure 19. Driver Screws & Cable Removal	38
Figure 20. Both Ends of Endcaps Screws Removal.....	38
TEST PROCEDURE	39-43
HI-POT TEST	44
SOFTWARE UPDATE	45-46
SERVICE MANUAL REVISION HISTORY	47

SAFETY INFORMATION

1. Parts that have special safety characteristics are identified by the  symbol on schematics or by special notes on the parts list. Use only replacement parts that have critical characteristics recommended by the manufacturer.
2. Make leakage current or resistance measurements to determine that exposed parts are acceptably insulated from the supply circuit before returning the unit to the customer.

Use the following checks to perform these measurements:

A. Leakage Current Hot Check - With the unit completely reassembled, plug the AC line cord directly into a 264V (line-neutral), 60Hz power source. (Do not use an isolation transformer during this test.)

Use a leakage current tester or a metering system that complies with American National Standards Institute (ANSI) UL 101 "Leakage Current for Appliances" and Underwriters Laboratories (UL) 60065/ IEC 60065 Clause 9.1.1.

With the unit Standby switch in the ON position, measure from a known earth ground (metal waterpipe, conduit, etc.) to all exposed metal parts of the unit BRACKET AL ALLOY (item 17 of Figure 2), especially any exposed metal parts that offer an electrical return path to the chassis, and repeat the test with the unit Standby switch in the OFF position.

Any current measured must not exceed 3.5 mA (or MIU). Reverse the unit power cord plug in the outlet and repeat test.

ANY MEASUREMENTS NOT WITHIN THE LIMITS SPECIFIED HEREIN INDICATE A POTENTIAL SHOCK HAZARD THAT MUST BE ELIMINATED BEFORE RETURNING THE UNIT TO THE CUSTOMER.

B. Insulation Resistance Test Cold Check - (1) Unplug the power supply and connect a jumper wire between the Line PIN and Neutral PIN the plug.

(2) Measure the resistance with an ohmmeter between the jumpered AC plug and each exposed metallic cabinet part on the unit. The resistance measured to the product enclosure should be between 2 and infinite MOhms. Also, the resistance measured to exposed input/output connectors should be between 4 and infinite MOhms.

If it is not within the limits specified, there is the possibility of a shock hazard, and the unit must be repaired and rechecked before it is returned to the customer.

CAUTION: The Bose L1 Pro32 Portable Line Array contains no user-serviceable parts. To prevent warranty infractions, refer servicing to warranty service stations or factory service.

PROPRIETARY INFORMATION

THIS DOCUMENT CONTAINS PROPRIETARY INFORMATION OF BOSE CORPORATION WHICH IS BEING FURNISHED ONLY FOR THE PURPOSE OF SERVICING THE IDENTIFIED BOSE PRODUCT BY AN AUTHORIZED BOSE SERVICE CENTER, AND SHALL NOT BE REPRODUCED OR USED FOR ANY OTHER PURPOSE.

Electrostatic Discharge Sensitive (ESDS) Device Handling


This unit contains ESDS devices. We recommend the following precautions when repairing, replacing or transporting ESDS devices:

- Perform work at an electrically grounded work station.
- Wear wrist straps that connect to the station or heel straps that connect to conductive floor mats.
- Avoid touching the leads or contacts of ESDS devices or PC boards even if properly grounded. Handle boards by the edges only.
- Transport or store ESDS devices in ESD protective bags, bins, or totes. Do not insert unprotected devices into materials such as plastic, polystyrene foam, clear plastic bags, bubble wrap or plastic trays.

WARRANTY

The Bose L1 Pro32 Portable Line Array is covered by a limited 5-year transferable warranty. Units that fail within 90 days of sale should be replaced.

PART LIST NOTES

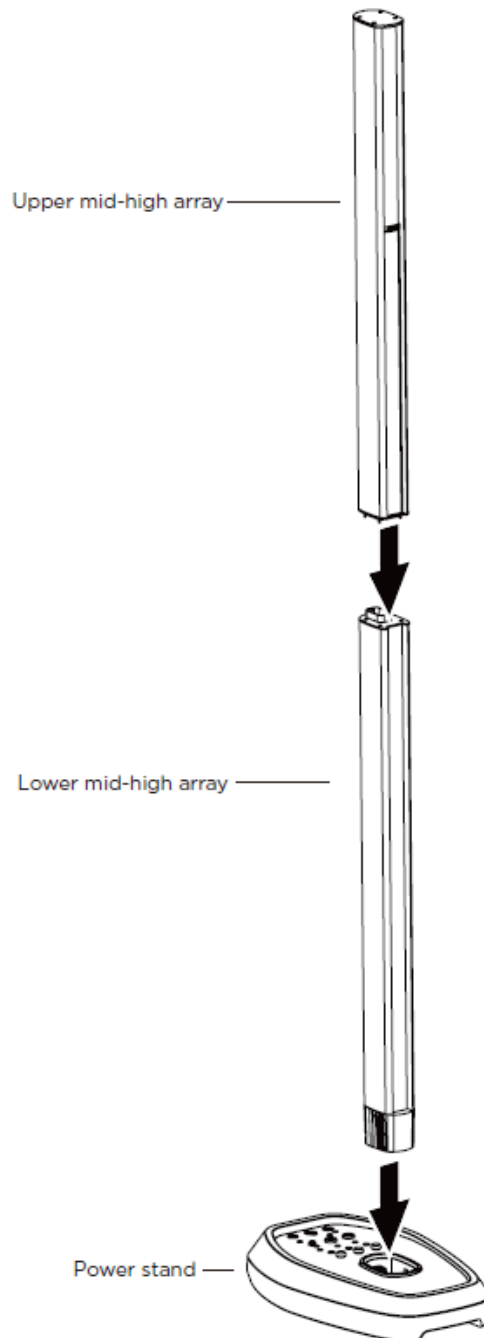
1. The individual parts located on the PCBs are listed in the Electrical Part List.
2. This part is referenced for informational purposes only. It is not stocked as a repair part. Refer to the next higher assembly for a replacement part.
3.  This part is critical for safety purposes. Failure to use a substitute replacement with the same safety characteristics as the recommended replacement part might create shock, fire and/or other hazards.

PRODUCT DESCRIPTION

L1 Pro32 Portable Line Array is the most compact, most portable, play-anywhere system. It is ideal for Singer-Songwriter with 32 Twiddlers.

Before connecting the power stand to a power source, assemble the L1 Pro32 using the upper mid-high array and lower mid-high array.

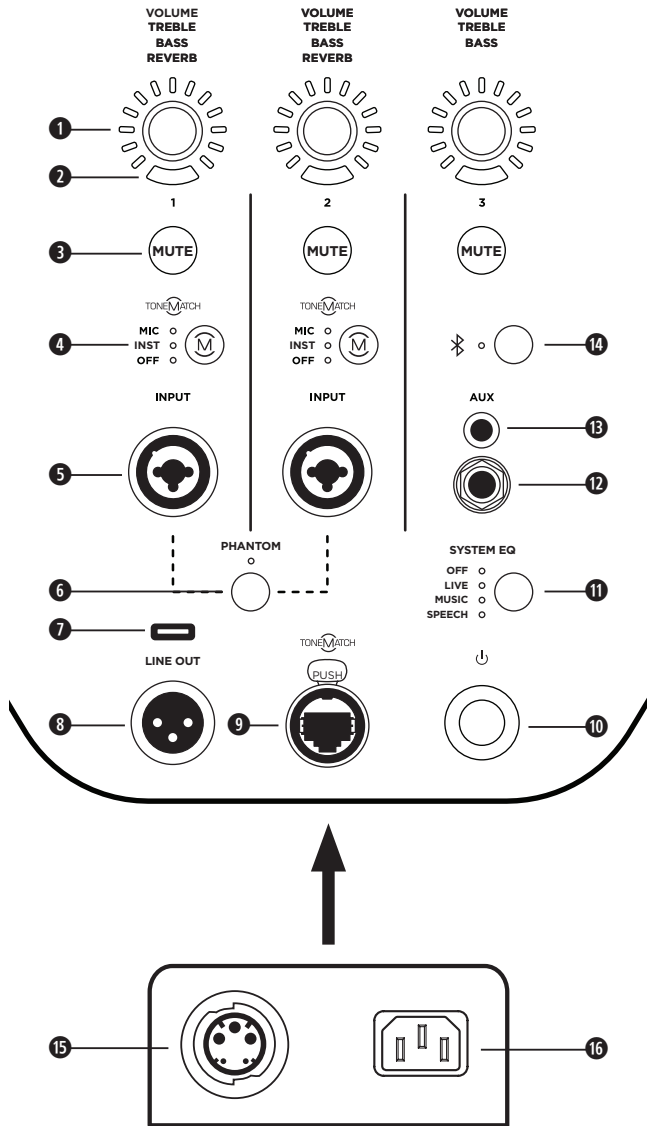
1. Insert the lower array into the power stand.
2. Insert the upper array into the lower array.



The L1 Pro32 can be used without the upper array. This configuration is useful when a venue ceiling cannot accommodate the height of the the L1 Pro32.

PRODUCT DESCRIPTION

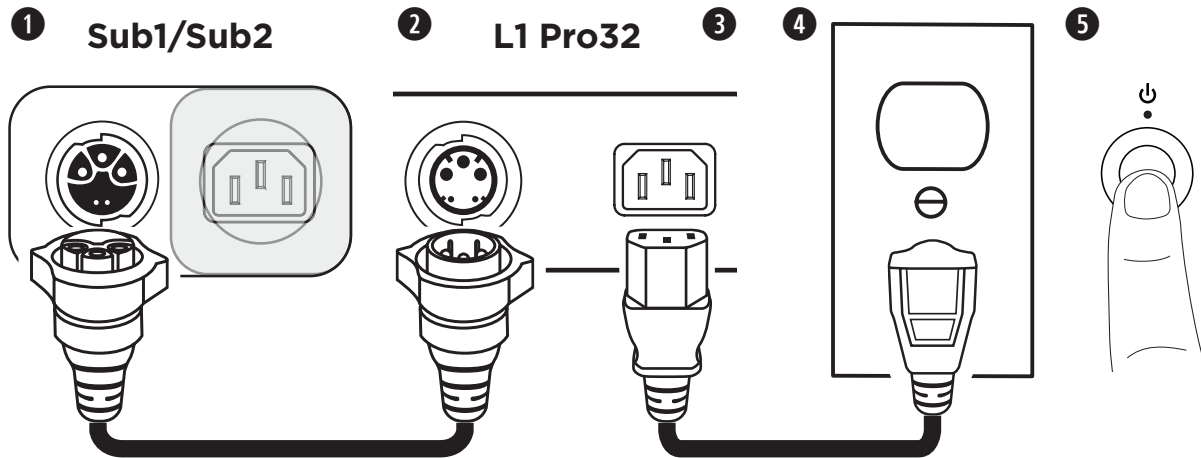
Connections and Controls



- 1 **Channel Parameter Control:** Adjust the level of volume, treble, bass, or reverb for your desired channel. Press the control to switch between parameters; rotate the control to adjust the level of your selected parameter.
- 2 **Signal/Clip Indicator:** The LED will illuminate green when a signal is present and will illuminate red when the signal is clipping or the L1 Pro is entering limiting. Reduce the channel or signal volume to prevent signal clipping or limiting.
- 3 **Channel Mute:** Mute the output of an individual channel. Press the button to mute the channel. While muted, the button will illuminate white.
- 4 **Channel ToneMatch Button:** Select the ToneMatch preset for an individual channel. Use **MIC** for microphones and use **INST** for acoustic guitar. The corresponding LED will illuminate white while selected.
- 5 **Channel Input:** Analog input for connecting microphone (XLR), instrument (TS unbalanced), or line level (TRS balanced) cables.
- 6 **Phantom Power:** Press the button to apply 48-volt power to channels 1 and 2. The LED will illuminate white while phantom power is applied.
- 7 **USB Port:** USB-C connector for Bose service use. **Note:** This port is not compatible with Thunderbolt 3 cables.
- 8 **XLR Line Output:** Use an XLR cable to connect the line-level output to a Sub1/Sub2 or another bass module.
- 9 **ToneMatch Port:** Connect your L1 Pro to a T4S or T8S ToneMatch mixer via a ToneMatch cable.
 - ⚠ **CAUTION:** Do not connect to a computer or phone network.
- 10 **Standby Button:** Press the button to power on the L1 Pro. The LED will illuminate white while the L1 Pro is on.
- 11 **System EQ:** Press the button to scroll through and select a master EQ suitable for the use case. The corresponding LED will illuminate white while selected.
- 12 **TRS Line Input:** Use a 6.4-millimeter (¼-inch) TRS cable to connect line-level audio sources.
- 13 **Aux Line Input:** Use a 3.5-millimeter (⅛-inch) TRS cable to connect line-level audio sources.
- 14 **Bluetooth® Pair Button:** Set up pairing with Bluetooth capable devices. The LED will flash blue while the L1 Pro is discoverable and illuminate solid white when a device is paired for streaming.
- 15 **SubMatch Output:** Connect a Sub1/Sub2 bass module with a SubMatch cable.
- 16 **Power Input:** IEC power cord connection.

PRODUCT DESCRIPTION

Connecting Power and a Sub1/Sub2



1. Plug the SubMatch cable into the **SubMatch Input** on a Sub1/Sub2.
2. Plug the other end of the SubMatch cable into the **SubMatch Output** of the L1 Pro32.
3. Plug the power cord into the **Power Input** on the L1 Pro32.
4. Plug the other end of the power cord into a live electrical outlet.

Note: Do not power on the L1 Pro until after you've connected your sources. See **Connecting Sources** on page 9.

5. Press the **Standby Button**. The LED will illuminate white while the L1 Pro is on.

Note: Press and hold the **Standby Button** for 10 seconds to reset the L1 Pro to factory settings.

Press the **Standby Button** on any connected Sub1/Sub2. For additional information on how to set up a Sub1/Sub2, see the Sub1/Sub2 owner's guide at **PRO.BOSE.COM**.

Note: When two Subs are connected to the L1 Pro32, first turn on the Sub connected directly to the L1 Pro32, then turn on the second Sub.

AutoOff/Low-power Standby

After four hours of no use, the L1 Pro will enter AutoOff/Low-power Standby mode to save power. To wake the L1 Pro from AutoOff/Low-power Standby mode, press the **Standby Button**. When the L1 Pro32 goes into AutoOff/Low-power Standby mode, this will cut power to any Sub1/Sub2 connected with a SubMatch cable. Press the **Standby Button** on a connected Sub1/Sub2 to wake it from AutoOff/Low-power Standby mode.

Note: Disable AutoOff/Low-power Standby mode by pressing and holding all three **Channel Parameter Controls** for 10 seconds, or via the Settings page in the L1 Mix app. Enable AutoOff/Low-power Standby mode by repeating this step. Disabling AutoOff/Low-power Standby mode will result in higher energy usage when the L1 Pro is not in use.

PRODUCT DESCRIPTION

Connecting Sources

Channel 1 & 2 Controls

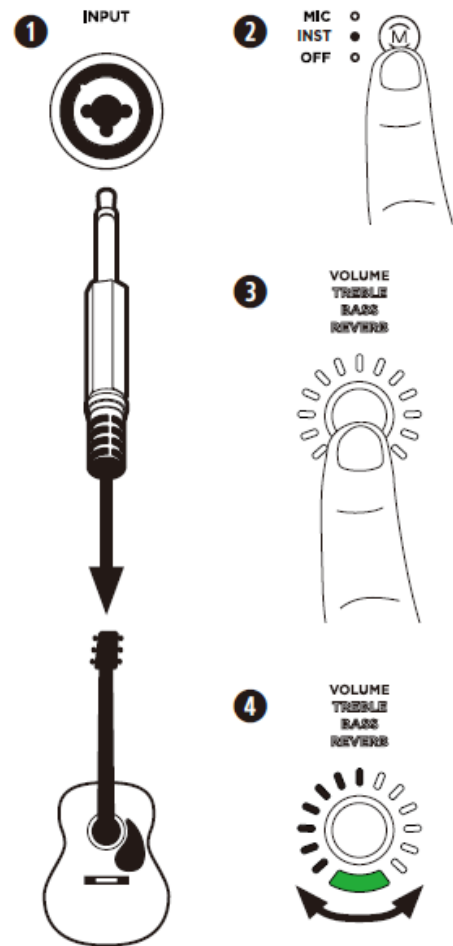
Channel 1 and 2 are for use with microphones, guitars, keyboards, or other instruments. The channel inputs are suitable for a wide range of input types and will have the proper gain staging to minimize noise when the channel volume is set for the desired output level.

1. Connect your sound source to the **Channel Input** with the appropriate cable.
2. Apply a ToneMatch preset—to optimize the sound of your microphone or instrument—by pressing the **Channel ToneMatch Button** until the LED for your chosen preset is illuminated. Use **MIC** for microphones and use **INST** for acoustic guitars and other instruments. Use **OFF** if you do not want to apply a preset.

Note: Use the L1 Mix app to choose custom presets from the ToneMatch library. The corresponding LED will illuminate green when a custom preset is selected.

3. Press the **Channel Parameter Control** to choose a parameter to modify. The parameter name will illuminate white while it is selected.
4. Rotate the **Channel Parameter Control** to adjust the level of the selected parameter. The parameter LED will indicate the level of the selected parameter.

Note: While **Reverb** is selected, press and hold the control for two seconds to mute the reverb. While reverb is muted, **Reverb** will flash white. To unmute reverb, press and hold for two seconds while **Reverb** is selected. Reverb mute will reset when the L1 Pro is powered off.



Channel 3 Controls

Channel 3 is for use with *Bluetooth*® enabled devices and line-level audio inputs.

Bluetooth Pairing

The following steps describe how to manually connect a *Bluetooth* enabled device to stream audio.

You can use the L1 Mix app to access additional device control. For more information on the L1 Mix app, see **L1 Mix App Control** below.

1. Turn on the *Bluetooth* feature on your mobile device.
2. Press and hold the **Bluetooth Pair Button** for two seconds. When ready to pair, the LED will flash blue.




3. Your L1 Pro will be visible in your device list on your mobile device. Select your L1 Pro from the device list. When the device pairs successfully, the LED will illuminate solid white.



Packaging Part List

L1 Pro32 Portable Line Array (see Figure 1)

Reference Designator	Description	Material Number	Note
1	MASTER CARTON	857774-0010	
2	CARDBOARD SUPPORT, FLUTE	857771-0010	
3	CARRY BAG, BASE, BLACK	856997-0110	
4	CARDBOARD FLUTE, ARRAY	857781-0010	
5	CARRY BAG, ARRAY, BLACK	856998-0110	
6	SKU LABEL	-	
7	BOTTOM SUPPORT	-	
8	DESICCANT	-	
9	SAFETY SHEET	857144-0010	
10	QSG	857143-0010	
11	CABLE, LINE CORD, IEC C13, NA	350745-0010	3 
	CABLE, LINE CORD, IEC C13, EU	350747-0010	
	CABLE, LINE CORD, IEC C13, JP	350749-0020	
	CABLE, LINE CORD, IEC C13, UK	350748-0010	
	CABLE, LINE CORD, IEC C13, AU	350746-0010	
12	NON-WOVEN BAG	-	
13	AUDIO CABLE	-	
14	MANUAL BAG	865047-0010	
15	POWER STAND ASSY	-	
16	ARRAY TOP ASSY	-	
17	ARRAY BOTTOM ASSY	-	
18	ARRAY LABEL	-	
19	SHEET,USER SOFTWARE UPDATE GUIDE	865083-0010	
20	SN LABEL	-	

Packaging Exploded View

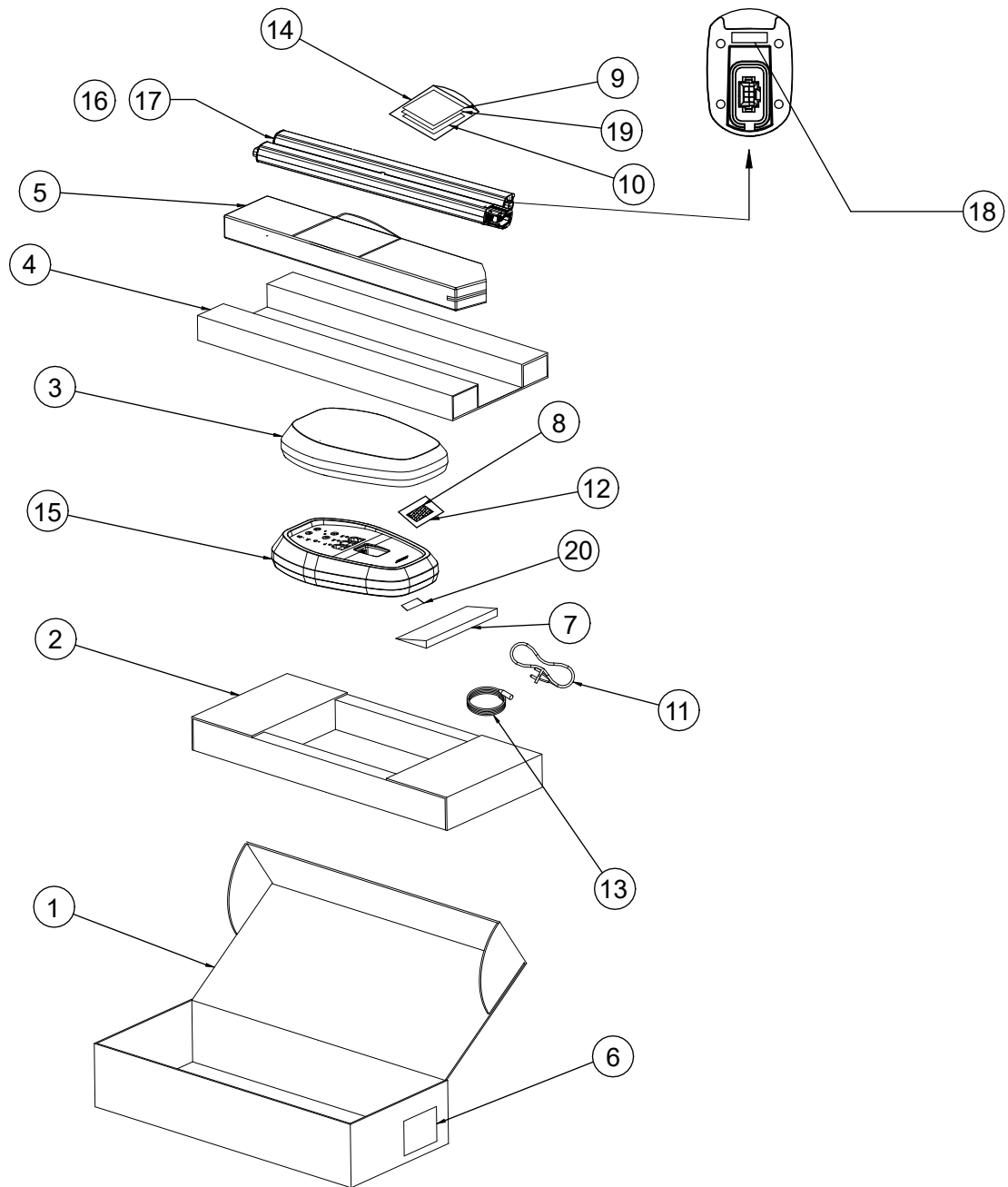


Figure 1. L1 Pro32 Packaging Exploded View

Main Part List

L1 Pro32 Power Stand (see Figure 2)

Item Number	Description	Material Number	Vendor Part Number	Note
1	PC SHEET TOP COVER L463X-W262.45MM K	843967-0110	T180700009510	
2	TOP COVER PP 94V0 BLACK K	-	T100424800100	
3	BRACKET VOLUME P PC+ABS 94V0 BLACK K	-	T100402800100	
4	GASKET VOLOUME PCB1 K	-	T180500034490	
5	VOLUME PCBA	861359-001S	T910000074760	
6	ANTENNA BRACKET PC+ABS 94V0 BLACK K	-	T100424500100	
7	ASSY, PCB, ANTENNA AND CABLE	796036-001S	T690800019100	
8	VOL CONNECT CABLE 10PIN ZH-10Y-ZH-07 K	-	T641700179800	
9	VOL CONNECT CABLE 11PIN ZH-11Y-ZH-04 K	-	T641700174500	
10	PP SHEET ADHESIVE DS11 L112.5XW62. K	-	T180700009520	
11	SCREW T4.0XL18 1.75P BZN+CED+HT K	-	T15340181F611	
12	SCREW M3.0XL9 0.5P BLUE ZINC+NYL K	-	T15130091C610	
13	SCREW M5XL25 0.8P_NYLOK_CED COA K	-	T15150251F610	
14	WASHER OD9.7XID6.4XT1.7 STEEL CED K	-	T181200000310	
15	PLATE HEATSINK P AL1050 NATUR COLOR K	-	T130203100100	
16	WASHER OD5.0XID3.1XT2.0 STEEL NICKEL L	-	T181200000270	
17	BRACKET AL ALLOY NATUR PASSIV K	-	T130210200100	
18	HANDLE PP 94V0 BLACK K	-	T100425000100	
19	THERMAL PAD 2_THERMAL CONDUCTIVE FA K	-	T181700001640	
20	POWER-AMP PCBA	864694-001S	T910000074780	
21	ARRAY CAVITY HARNESS	847608-0110	T641700170600	
22	BOTTOM COVER PP 94V0 BLACK K	-	T100424900100	
23	SCREW T4.0XL15 1.41P BLUE ZINC+C K	-	T15001111F610	

Main Part List

L1 Pro32 Power Stand (see Figure 2)

Item Number	Description	Material Number	Vendor Part Number	Note
24	BOTTOM COVER PC SHEET FRONT L117.8 K	852458-0110	T180700009480	
25	RUBBER FEET, FRONT LEFT	852453-0110	T100429800100	
26	RUBBER FEET, FRONT RIGHT	852454-0110	T100429900100	
27	HEATSINK AMP CHI AL6063 NATUR COLOR K	-	T130204100100	
28	BOTTOM COVER PC SHEET LEFT L355.2X K	852450-0110	T180700009490	
29	BOTTOM COVER PRODUCT LABEL PC K	-	T180700009600	
30	BOTTOM COVER PC SHEET RIGHT L355.2 K	852450-0120	T180700009500	
31	SCREW T3.0XL12 1.06P NICKEL PLATE K	-	T15330122F610	
32	SCREW T3.5XL10 - K	-	T15335101F610	
33	RELAY 250V 250V 30A 35. HF37F\012 K	-	T690400001200	
34	RUBBER FEET, REAR, LEFT	852452-0110	T100429700100	
35	RUBBER FEET, REAR, RIGHT	852451-0110	T100429600100	
36	SCREW T3.0XL18 1.058P BZN+CED+HT K	-	T15330181F610	
37	SMPS, HARNESS	-	T641700182900	
38	1P YELLOW\GREEN 16AWG UL1015 X-P-1966 K	-	T641700171600	
39	TUBE PVC 30 38 - K	-	T690200008700	
40	EVA_38 DEGREE_BLACK_ADHESIVE DS11 K	-	T180500030670	
41	NUT M3.0X0.5PXOD5.5XL2.3 NICKEL PLATE K	-	T181000000520	
42	PLUG 250VA 10A NA JINJIA K	-	T691200007600	
43	SCREW M3XL12MM 0.5P ZINC+NICK-EL K	-	T151301230611-02	
44	COOLING FAN 5V 0.05A 40*40*1 5000PRM AXIAL K	841436-0110	T691300000400	
45	BASE MATCH CABLE 05RMFS-PH-2Y-03 K	847615-0010	T641700182800	
46	EMI BEAD CKT3612B K	-	T710500035000	

Main Part List

L1 Pro32 Power Stand (see Figure 2)

Item Number	Description	Material Number	Vendor Part Number	Note
47	SPONGE YU356 HF-1 ADHESIVE 3212 K	-	T180500028000	
48	NUT M4XOD8.0XH4.1 0.7P STEEL NI ELECTR K	-	T181000001240	
49	AIR DUCT ABS 94HB BLACK K	-	T100430500100	
50	PP SHEET FOR AIR DUCT L235XW-57MM K	-	T180700009540	
51	NON WOVEN SHEET_BLACK_ADHESIVE 3M9 K	-	T182900003130	
52	BASS MATCH CABLE PH-2Y-67 K	-	T641700183000	
53	THERMAL PAD, EXTRUSION	845032-0110	T181700001650	
54	MYLAR SHEET_PP_UL 94V0_ONE SIDE AD K	-	T180700009630	
55	SCREW T3.5XL14 1.41P BZN+CED+HT K	-	T15335142F610	
56	SPACER PA66-ROW 94V0 NATUR K	-	T100461900100	
57	MAIN-I/O PCBA, SVCE	864695-001S	T910000074750	
58	LINE OUT CONNECTOR EVA GASKET L28X K	-	T180500031510	
59	PC TONE MATCH L36XW27MM K	-	T180700009530	
60	INPUT CONNECTOR EVA GASKET L32XW29 K	-	T180500031530	
61	EVA 38° ADHESIVE L18.5XW7XT0.5MM K	-	T180500032630	
62	THERMAL PAD 2, HEATSINK	844030-0110	T181700001630	
63	EQ LIGHT GUIDE KINGFA JH 94V2 MILK K	-	T100402200100	
64	POWER LIGHT GUID KINGFA JH 94V2 MILK K	-	T100402400100	
65	POWER BUTTON PC+ABS 94V0 BLACK K	-	T100401900100	
66	POWER BUTTON RIN PC+ABS 94V0 BLACK K	-	T100402100100	
67	POWER BUTTON EVA GASKET L33.5XW30M K	-	T180500031520	
68	BUTTON PHANTOM PC+ABS 94V0 BLACK K	-	T100403400100	
69	BUTTON SELECTION 1 PC+ABS 94V0 BLACK L	-	T100403500100	

Main Part List

L1 Pro32 Power Stand (see Figure 2)

Item Number	Description	Material Number	Vendor Part Number	Note
70	POLARITY LIGHT G KINGFA JH 94V2 MILK K	-	T100402300100	
71	BUTTON SELECTION PC+ABS 94V0 BLACK K	-	T100402900100	
72	BUTTON MUTE PC 94V2 MILK L	-	T100403300200	
73	AMP EMI SHIE SECC NATUR COLOR K	-	T130202600100	
74	SCREW T3.0XL15 1.27P ZINC+CED COA K	-	T15330151F610	
75	SCREW T3XL12 P1.058 ZINC+NI K	-	T153301230610-02	
76	MAIN CONNECT SMPS CABLE IDC-28Y-IDC-C3 K	-	T641700171700	
77	6.35MM STEREO JACK NJ6FD-V K	-	T710200019500	
78	VOLUME KNOB ABS PA-75 94HB BLACK K	841657-0110	T100403800100	
79	RUBBER RING_SILICON 50 DEGREE_BLACK K	-	T180200016500	
80	SCREW M5.0XL9 0.8P BZN+CED+HT K	-	T15150092F610	
81	SOLDER LUG OD8.0*ID4.1*L56 K	-	T690300045600	
82	NON WOVEN SHEET_BLACK_ADHESIVE 3M9 K	-	T182900003120	
83	SCREW T3XL6 1.3P_NICKEL PLATIN K	-	T153300612631	
84	THERMAL GREASE TG3500 K	-	T980200002400	
NA	GAP FILLER, THERMAL, ONE PART, 55CC	749859-0020	-	

Power Stand Exploded View

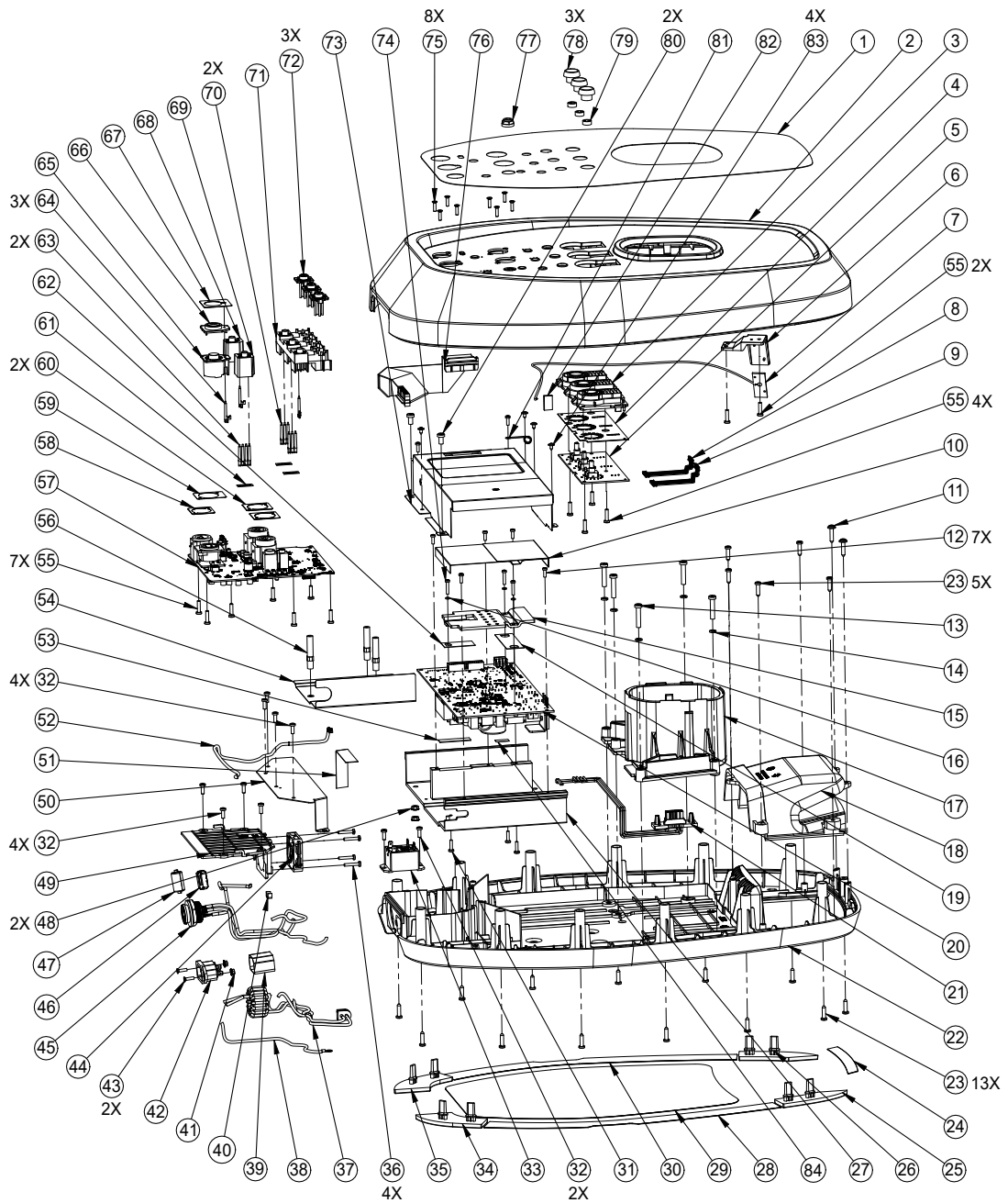


Figure 2. L1 Pro32 Power Stand Exploded View

Main Part List

L1 Pro32 Array Speaker (see Figure 3)

Item Number	Description	Material Number	Vendor Part Number	Note
1	GRILLE, ARRAY SUBASSY, UPPER, SVCE	864750-011S	T130210300100	
2	WASHER, SUS 304	-	T181200001410	
3	TAPE, DOUBLE, DX6930	-	T180000008760	
4	LOGO, ARRAY	-	T100424600100	
5	SCREW, T3XL10	-	T15330101F611	
6	METAL SHEET, L16, SPCC	-	T13020810010A	
7	SPONGE, YU356, ADHESIVE, 3212	-	T180500028000	
8	PE FOAM, ADHESIVE, BLACK, DS11	-	T180500031050	
9	SCREW, T3XL15	-	T15330151F610	
10	ENCLOSURE, ABS, BLACK	-	T100426300100	
11	WADDING, ARRAY	-	T182700002500	
12	CABLE, ARRAY2-2	-	T641700172200	
13	CABLE, ARRAY, 6PIN	-	T641700171100	
14	CABLE, SINGLE, TW CONNECT, 120MM	-	T641700168700	
15	SILICON FOAM, 25 DEGREE	-	T180200015730	
16	SILICON FOAM, 25 DEGREE	-	T180200015810	
17	SCREW, T3XL12	-	T153301230610-02	
18	ENDCAP, 1 (TOP, UPPER ARRAY)	826315-0110	T910400038740	
19	NON WOVEN, ADHESIVE, BLACK, 3M 9448HKB	-	T182900003220	
20	GASKET, END CAP, TOP	839673-0110	T910400040060	
21	NON WOVEN, ADHESIVE, BLACK, DS11	-	T182900003190	
22	BAFFLE, UPPER, ABS, BLACK	-	T100426200100	
23	NON WOVEN, ADHESIVE, BLACK, DS11	-	T182900003140	
24	NUT SPRING, M3	-	T181000001460	
25	SCREW, M3XL12MM	-	T151301210610	
26	ENDCAP, 2 (UPPER ARRAY)	813543-0110	T910400040050	
27	LABEL, ARRAY, ASSY	-	T911700056750	
28	GRILLE, ARRAY, LOWER	831643-0110	T910400040030	
29	CABLE, ARRAY, 8PIN	-	T641700170700	
30	SHIM, ARRAY	-	T100430400100	
31	ENCLOSURE CURVED, ARRAY	-	T100430100100	

Main Part List

L1 Pro32 Array Speaker (see Figure 3)

Item Number	Description	Material Number	Vendor Part Number	Note
32	CABLE, ARRAY, 10PIN	-	T641700171900	
33	ENDCAP, 3 (LOWER ARRAY)	813554-0110	T910400040040	
34	BAFFLE, ARRAY, LOWER	-	T100430000100	
35	DRIVER, 2 IN	812886-0010	T911600010920	3 ⚠
36	NON WOVEN, ADHESIVE, BLACK, 3M 9448HKB	-	T182900003370	

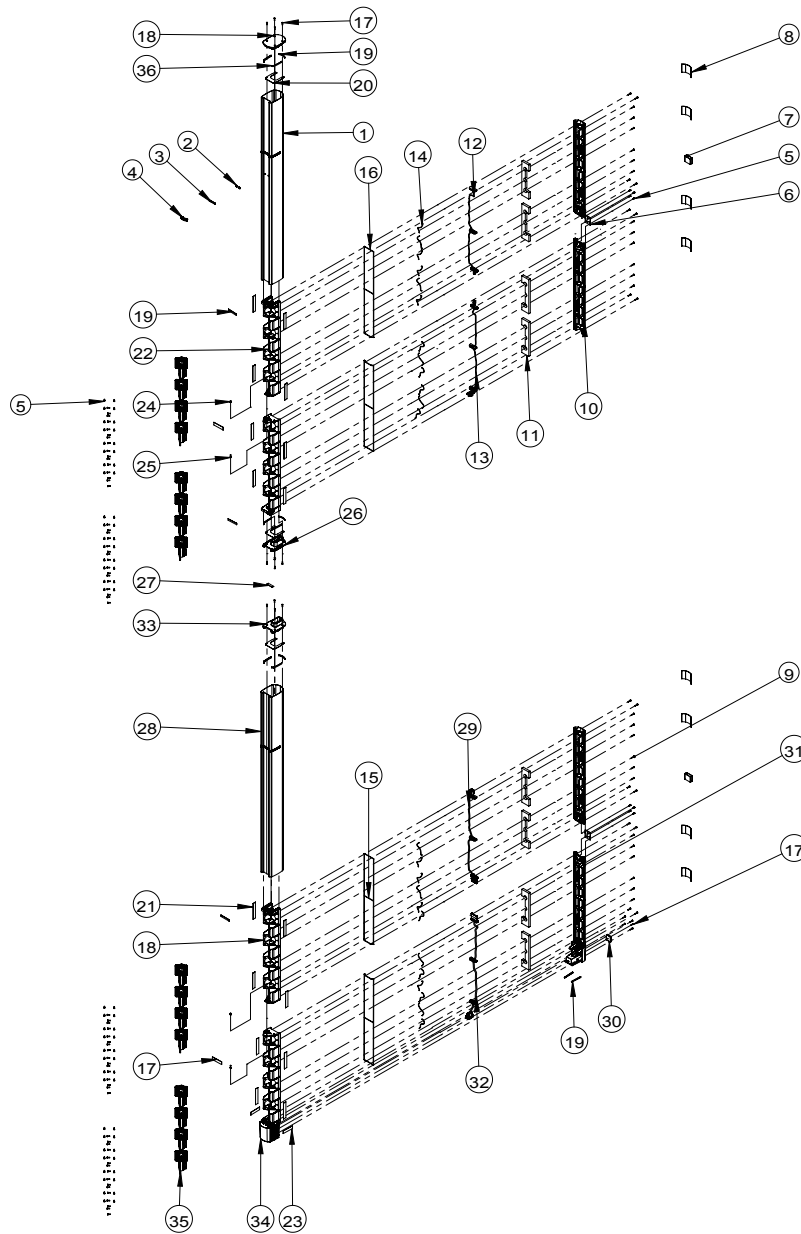


Figure 3. L1 Pro32 Array Speaker Exploded View

MAIN-I/O PCB PARTS LIST

Resistors

Reference Designator	Description	Material Number	Note
R103	RES, THICK FILM, 0603, 0.1W, 1%, 5.6K	857326-0166	
R113	RES, THICK FILM, 0402, 0.063W, 1%, 6.8K	857326-0084	
R116, R172, R320, R327, R329, R336, R367, R371, R387, R389-R390, R393, R396, R398, R422	RES, THICK FILM, 0402, 0.063W, 1%, 10 OHM	857326-0089	
R118, R168	RES, THICK FILM, 0402, 0.063W, 1%, 22K	857326-0045	
R150, R286, R314, R318, R322, R414, R231A, R231B, R248A, R248B	RES, THICK FILM, 0603, 0.1W, 1%, 10K	857326-0093	
R160-R161	RES, THICK FILM, 0603, 0.1W, 1%, 33 OHM	857326-0146	
R169, R178	RES, THICK FILM, 0402, 0.063W, 1%, 100K	857326-0022	
R186	RES, THICK FILM, 0402, 0.063W, 1%, 200 OHM	857326-0037	
R196A, R196B, R205A, R205B	RES, THICK FILM, 0603, 0.1W, 1%, 1.5K	857326-0108	
R197A, R197B, R206A, R206B	RES, THICK FILM, 0603, 0.1W, 1%, 22 OHM	857326-0130	
R199A, R199B, R203A, R203B, R219A, R219B, R240A, R240B	RES, THICK FILM, 0603, 0.1W, 1%, 1M	857326-0095	
R1-R2, R5-R8, R16-R29, R32-R34, R91, R94, R108-R111, R119-R121, R137, R140, R153, R268, R293, R296-R297, R312-R313, R316, R321, R338, R358-R359, R361-R362, R369, R394, R399, R401-R404, R428-R430, R432-R434, R436-R437, R440, R442, R444-R445, R449-R452, R468	JUMPER, CHIP, 0402	857326-0217	
R200A, R200B, R204A, R204B	RES, THICK FILM, 0603, 0.1W, 1%, 10M	857326-0096	
R214A, R214B, R237A, R237B	RES, THICK FILM, 0603, 0.1W, 1%, 3K	857326-0140	
R215A, R215B, R223A, R223B, R245A, R245B, R254A, R254B	RES, THICK FILM, 0603, 0.1W, 1%, 1.2K	857326-0100	
R216A, R216B, R224A, R224B, R246A, R246B, R255A, R255B	RES, THICK FILM, 0603, 0.1W, 1%, 24 OHM	857326-0133	
R221A, R221B, R238A, R238B	RES, THICK FILM, 0603, 0.1W, 1%, 3.6K	857326-0149	
R222A, R222B, R242A, R242B	RES, THICK FILM, 0603, 0.1W, 1%, 330 OHM	857326-0143	
R226A, R226B, R235A, R235B	RES, THICK FILM, 0603, 0.1W, 1%, 6.8K	857326-0171	

MAIN-I/O PCB PARTS LIST

Resistors (continued)

Reference Designator	Description	Material Number	Note
R229A, R229B	RES, THICK FILM, 0603, 0.1W, 1%, 220 OHM	857326-0126	
R230A, R230B	RES, THICK FILM, 0603, 0.1W, 1%, 2.1K	857326-0124	
R250A, R250B, R251A, R251B	RES, THICK FILM, 0603, 0.1W, 1%, 150 OHM	857326-0107	
R263A, R263B	RES, THICK FILM, 0603, 0.1W, 1%, 56 OHM	857326-0168	
R265A, R265B	RES, THICK FILM, 0402, 0.063W, 1%, 390 OHM	857326-0063	
R266A, R266B	RES, THICK FILM, 0603, 0.1W, 1%, 1.8K	857326-0115	
R267	RES, THICK FILM, 0402, 0.063W, 1%, 180K	857326-0036	
R272	RES, THICK FILM, 0603, 0.1W, 1%, 30.9K	857326-0142	
R274	RES, THICK FILM, 0402, 0.063W, 1%, 374K	857326-0062	
R275, R283	RES, THICK FILM, 0402, 0.063W, 1%, 41.2K	857326-0064	
R276	RES, THICK FILM, 0402, 0.063W, 1%, 32.4K	857326-0056	
R282	RES, THICK FILM, 0603, 0.1W, 1%, 210K	857326-0125	
R285	RES, THICK FILM, 0603, 0.1W, 1%, 1.3 OHM	857326-0183	
R289	RES, THICK FILM, 0603, 0.1W, 1%, 68K	857326-0172	
R290	RES, THICK FILM, 0402, 0.063W, 1%, 2K	857326-0038	
R294	RES, THICK FILM, 0603, 0.1W, 1%, 3.01K	857326-0141	
R295	RES, THICK FILM, 0603, 0.1W, 1%, 4.7 OHM	857326-0185	
R3, R9-R14, R30, R125-R127, R133-R134, R138-R139, R141-R149, R151-R152, R154-R158, R162, R164-R165, R170-R171, R177, R181-R185, R279-R280, R347-R357, R360, R365, R368, R372-R374, R376-R378, R380-R382, R388, R395, R416, R447-R448, R453, R455	RES, THICK FILM, 0402, 0.063W, 1%, 33 OHM	857326-0058	
R301	RES, THICK FILM, 0805, 0.125W, 5%, 4.7 OHM	857326-0194	
R303, R311	RES, THICK FILM, 0603, 0.1W, 1%, 511K	857326-0164	
R304	RES, THICK FILM, 0402, 0.063W, 1%, 453K	857326-0068	
R305, R317	RES, THICK FILM, 0603, 0.1W, 1%, 105K	857326-0097	
R31, R269, R271, R273, R287, R298-R300, R302, R307-R310	JUMPER, CHIP, 0805	857326-0219	
R319	RES, THICK FILM, 0603, 0.1W, 1%, 13.7K	857326-0105	
R324C, R324D, R332C, R332D, R333C, R333D, R341C, R341D	RES, THICK FILM, 0603, 0.1W, 1%, 4.99K	857326-0160	
R35, R53	RES, THICK FILM, 0603, 0.1W, 1%, 28K	857326-0137	
R36, R43, R57, R65, R198A, R198B, R207A, R207B	RES, THICK FILM, 0805, 0.125W, 1%, 100 OHM	857326-0186	

MAIN-I/O PCB PARTS LIST

Resistors (continued)

Reference Designator	Description	Material Number	Note
R364, R195A, R195B, R202A, R202B, R208A, R208B, R209A, R209B, R211A, R211B, R247A, R247B, R252A, R252B, R253A, R253B, R257A, R257B, R260A, R260B	RES, THICK FILM, 0603, 0.1W, 1%, 1K	857326-0092	
R37, R50, R54, R68	RES, THICK FILM, 0603, 0.1W, 1%, 14K	857326-0106	
R375, R379, R383	RES, THICK FILM, 0603, 0.1W, 1%, 560 OHM	857326-0165	
R38, R41	RES, THICK FILM, 0603, 0.1W, 1%, 20K	857326-0120	
R39, R45, R55, R62	RES, THICK FILM, 0603, 0.1W, 1%, 120K	857326-0102	
R397, R425	RES, THICK FILM, 0402, 0.063W, 1%, 4.7K	857326-0070	
R4, R15, R88, R99, R114, R117, R130, R277, R292, R370, R385, R400, R424, R256A, R256B, R262A, R262B, R291A, R291B	JUMPER, CHIP, 0603	857326-0218	
R40, R46, R56, R63, R105, R217A, R217B, R220A, R220B, R225A, R225B, R239A, R239B, R241A, R241B, R243A, R243B	RES, THICK FILM, 0603, 0.1W, 1%, 10 OHM	857326-0181	
R406	RES, THICK FILM, 0603, 0.1W, 1%, 68.1 OHM	857326-0173	
R408, R258A, R258B, R259A, R259B	RES, THICK FILM, 0603, 0.1W, 1%, 267 OHM	857326-0134	
R409	RES, THICK FILM, 0603, 0.1W, 1%, 110 OHM	857326-0098	
R413	RES, THICK FILM, 0603, 0.1W, 1%, 750 OHM	857326-0174	
R42, R49, R59, R67, R163, R166, R210A, R210B, R232A, R232B	RES, THICK FILM, 0603, 0.1W, 1%, 2.2K	857326-0127	
R431	RES, THICK FILM, 0402, 0.063W, 1%, 2.2K	857326-0044	
R44, R47, R60, R64, R281, R391-R392, R418, R212A, R212B, R218A, R218B, R228A, R228B, R244A, R244B, R249A, R249B, R261A, R261B	RES, THICK FILM, 0603, 0.1W, 1%, 4.7K	857326-0155	
R462-R463, R464A, R464B	RES, THICK FILM, 0402, 0.063W, 1%, 1.5K	857326-0030	
R466A, R466B, R467A, R467B	RES, THICK FILM, 0402, 0.063W, 1%, 360 OHM	857326-0059	
R48, R66, R80, R86, R159, R233A, R233B, R74C, R74D, R77C, R77D	RES, THICK FILM, 0603, 0.1W, 1%, 47K	857326-0156	
R51, R69	RES, THICK FILM, 0603, 0.1W, 1%, 2.4K	857326-0132	
R52, R70, R123-R124, R191, R236A, R236B	RES, THICK FILM, 0402, 0.063W, 1%, 1K	857326-0020	
R58, R61, R173, R270, R306, R315, R323, R366, R415, R227A, R227B, R234A, R234B	RES, THICK FILM, 0603, 0.1W, 1%, 100K	857326-0094	

MAIN-I/O PCB PARTS LIST

Resistors (continued)

Reference Designator	Description	Material Number	Note
R71, R83-R84, R97	RES, THICK FILM, 0603, 0.1W, 1%, 18K	857326-0116	
R72, R75, R79, R89, R92, R96, R284, R201A, R201B, R264A, R264B, R325C, R325D, R328C, R328D, R331C, R331D, R334C, R334D, R337C, R337D, R340C, R340D	RES, THICK FILM, 0603, 0.1W, 1%, 100 OHM	857326-0091	
R73, R78, R90, R95, R326C, R326D, R330C, R330D, R335C, R335D, R339C, R339D	RES, THICK FILM, 0603, 0.1W, 1%, 6.2K	857326-0170	
R76, R93	RES, THICK FILM, 0603, 0.1W, 1%, 47 OHM	857326-0159	
R81-R82, R85, R87	RES, THICK FILM, 0603, 0.1W, 1%, 470 OHM	857326-0154	
R98, R102, R104, R107, R112, R122, R176, R180, R187-R190, R192-R193, R342-R346, R412, R426-R427	RES, THICK FILM, 0402, 0.063W, 1%, 10K	857326-0021	

Capacitors

Reference Designator	Description	Material Number	Note
C1, C9, C13, C15-C16, C20-C21, C57-C59, C62-C64, C89, C93, C97, C99, C121, C124, C199, C208, C212-C213, C224, C226-C227, C236-C237, C239-C240, C252-C253, C293-C294, C300, C134A, C134B, C135A, C135B, C136A, C136B, C137A, C137B, C148A, C148B, C149A, C149B, C150A, C150B, C151A, C151B, C174A, C174B, C269C, C269D, C271C, C271D	CAP, X7R, 0402, 25V, 10%, 0.1uF, COMM	718866-104K1E	
C104-C105, C107-C108, C122-C123, C192-C193, C230-C231, C288-C289	CAP, X7R, 0603, 6.3V, 10%, 4.7uF, COMM	718875-475K0J	
C11, C96, C119	CAP, X7R, 0603, 6.3V, 10%, 1uF, COMM	718875-105K0J	
C12, C23, C26, C32, C34, C36, C40-C41, C48, C51, C53, C68, C87, C91	CAP, EL, SMT, 105C, 16V, 20%, 22uF, COMM	856752- 220M1CBB	
C125	CAP, C0G, 0402, 50V, 5%, 1000pF, COMM	766718-102J1H	
C138A, C138B, C145A, C145B	CAP, C0G, 1206, 50V, 5%, 0.1uF, COMM	852048-104J1H	
C141A, C141B, C157A, C157B, C167A, C167B, C179A, C179B	CAP, C0G, 0603, 50V, 5%, 2700pF, COMM	780788-272J1H	

MAIN-I/O PCB PARTS LIST

Capacitors (continued)

Reference Designator	Description	Material Number	Note
C142A, C142B, C144A, C144B, C161A, C161B, C172A, C172B	CAP, EL, LOW Z, SMT, 63V, 20%, 22uF, COMM	856727- 220M1JCD	
C158A, C158B, C175A, C175B	CAP, C0G, 0603, 50V, 5%, 270pF, COMM	780788-271J1H	
C162A, C162B	CAP, EL, SMT, 105C, 10V, 20%, 1000uF, COMM	856752- 102M1AED	
C165A, C165B	CAP, C0G, 0603, 50V, 5%, 10pF, COMM	780788-100J1H	
C168A, C168B, C169A, C169B	CAP, X7R, 1206, 100V, 10%, 2.2uF, COMM	770764-225K2A	
C17, C22, C66, C72, C86, C309	CAP, X5R, 0402, 25V, 20%, 1uF, COMM	716994-105M1E	
C181A, C181B, C186A, C186B, C90A, C90B	CAP, X7R, 0603, 50V, 10%, 0.1uF, COMM	718875-104K1H	
C190-C191, C210-C211, C217-C218, C233-C234, C243-C244, C250-C251	CAP, X5R, 0603, 25V, 10%, 4.7uF, COMM	718835-475K1E	
C194	CAP, X7R, 0805, 100V, 10%, 0.1uF, COMM	763872-104K2A	
C195	CAP, EL, SMT, 105C, 100V, 20%, 33uF, COMM	856752- 330M2AED	
C204	CAP, C0G, 0603, 50V, 5%, 330pF, COMM	780788-331J1H	
C209	CAP, X7R, 0603, 16V, 10%, 0.47uF, COMM	718875-474K1C	
C229	CAP, C0G, 0402, 50V, 5%, 22pF, COMM	766718-220J1H	
C241	CAP, X7R, 0603, 50V, 10%, 0.22uF, COMM	718875-224K1H	
C242	CAP, C0G, 0603, 50V, 5%, 82pF, COMM	780788-820J1H	
C24-C25, C28-C29, C43-C44, C46-C47, C73, C77-C78, C82, C140A, C140B, C143A, C143B, C166A, C166B, C260C, C260D, C263C, C263D	CAP, C0G, 0603, 50V, 5%, 470pF, COMM	780788-471J1H	
C27, C35, C42, C52, C155A, C155B, C164A, C164B, C170A, C170B, C173A, C173B	CAP, C0G, 0603, 50V, 5%, 100pF, COMM	780788-101J1H	
C291-C292	CAP, C0G, 0402, 50V, 5%, 15pF, COMM	766718-150J1H	
C2-C3, C6, C14, C18-C19, C98, C101, C132, C215, C249, C152A, C152B, C153A, C153B, C183A, C183B, C184A, C184B	CAP, X5R, 0603, 10V, 10%, 10uF, COMM	718835-106K1A	
C30, C39, C49, C56	CAP, X7R, 0402, 50V, 10%, 0.1uF, COMM	718866-104K1H	
C301-C302	CAP, C0G, 0603, 50V, 5%, 47pF, COMM	780788-470J1H	
C5, C196, C205, C225, C228, C235, C238, C245, C310	CAP, EL, SMT, 105C, 25V, 20%, 100uF, COMM	856752- 101M1ECC	

MAIN-I/O PCB PARTS LIST

Capacitors (continued)

Reference Designator	Description	Material Number	Note
C65, C69, C83, C95, C100, C102, C106, C109-C118, C120, C126-C131, C202, C214, C273-C277, C285-C287, C304	CAP, X7R, 0402, 50V, 10%, 10000pF, COMM	718866-103K1H	
C67, C76, C79, C88, C185A, C185B, C187A, C187B, C188A, C188B, C189A, C189B	CAP, C0G, 0402, 50V, 5%, 100pF, COMM	766718-101J1H	
C71, C85, C216, C258C, C258D, C266C, C266D	CAP, C0G, 0603, 50V, 5%, 1000pF, COMM	780788-102J1H	
C8, C10, C60-C61, C74-C75, C80-C81, C203, C133A, C133B, C146A, C146B, C154A, C154B, C163A, C163B, C177A, C177B, C182A, C182B, C255C, C255D, C261C, C261D, C262C, C262D, C268C, C268D	CAP, C0G, 0603, 50V, 5%, 220pF, COMM	780788-221J1H	

Diodes

Reference Designator	Description	Material Number	Note
D15	DIODE, RECT, 200V, 1A, ESH1DM, SMA	849894-0100	
D17	DIODE, SCHOTTKY, 2A, 60V, SOD123F	852398-0010	
D18, D25	DIODE, SCHOTTKY, 40V, 1A, SS14L, FLSMA	855980-0040	
D1-D4, D19, D12A, D12B, D13A, D13B, D14A, D14B, D9A, D9B	DIODE, SW, 75V, 0.3A, SOT-23, BAV99	747976-0010	
D20	DIODE, TVS, BIDIR, DUAL, 24V, ESDCAN01, SOT23, AUTO	855760-0010	
D22, D26, D10A, D10B, D11A, D11B	DIODE, SWITCHING, 100V, 0.15A, SOD323F	856395-0010	
D37A, D37B, D38A, D38B	DIODE, TVS, 58V, 400W, BI-DIR, SMAJ58CA	310546-058	
D42	DIODE, SCHOTTKY, 2A, 40V, SMA	852396-240A	
D43	DIODE, SCHOTTKY, 30V, BAT54A, SOT-23	330427-0020	
D5-D6, D8, D16, D21, D23-D24, D27-D34, D39, D35A, D35B, D36A, D36B	VARISTOR, MULTILAYER, 0402, 130pF, 12V	855757-120M131	
LED15	DIODE, LED, 0603, BLUE, VERT	851299-0010	
LED17	DIODE, LED, 0606, WHITE, RED, VERT	851297-0010	
LED1-LED3, LED5, LED8, LED10-LED14, LED16	DIODE, LED, 0603, WHITE, VERT	851300-0010	
LED4, LED6-LED7, LED9	DIODE, LED, 0603, WHITE, GREEN, VERT	851298-0010	

MAIN-I/O PCB PARTS LIST

Inductors

Reference Designator	Description	Material Number	Note
L1	INDUCTOR, POWER, 0805, 85C, 0.25A, 20%, 4.7uH	722597-4R7M	
L22	BEAD, FERRITE, 0402, 0.1A, 1800 OHM, COMM	840686-182D	
L29	INDUCTOR, POWER, SMT, 1.2A, 30%, 2.2uH, COMM	852851-2R2N	
L30	INDUCTOR, POWER, SMT, 0.7A, 20%, 220uH, COMM	852883-221M	
L31, L33-L34	INDUCTOR, POWER, SMT, 2.5A, 20%, 22uH, COMM	853388-220M	
L37	INDUCTOR, WW, CM, 1206, 0.2A, 2200 OHM, COMM	855607-222	
L7-L14, L25A, L25B, L26A, L26B, L27A, L27B, L28A, L28B	BEAD, FERRITE, 0402, 0.25A, 1.1 OHM, Z=1K	371767-0010	

Transistors

Reference Designator	Description	Material Number	Note
Q14A, Q14B, Q15A, Q15B, Q16A, Q16B, Q17A, Q17B, Q18A, Q18B, Q19A, Q19B, Q20A, Q20B, Q21A, Q21B	TRANSISTOR, PNP, 40V, 0.6A, SOT-23, MMBT4403	260354-001	
Q1-Q4	TRANSISTOR, NPN, 20V, 0.3A, 2SC3326-B, SC-59	856177-0020	
Q24	TRANSISTOR, MFET, N-CH, 60V, 2.1A, SOT23	856158-0010	
Q25	TRANSISTOR, MFET, P-CH, -3.8A, -30V, SOT23	852237-0010	
Q27	TRANSISTOR, MFET, P-CH, -180mA, -60V, SOT23	852238-0010	
Q29-Q32, Q10A, Q10B, Q11A, Q11B	TRANSISTOR, DUAL, COMP, 40V, 0.6A, 200mW, SOT-363	850060-0100	
Q5	XSISTOR, BPLR, P, 40V, 200mA, SOT23	148596	
Q7, Q26, Q28, Q22A, Q22B, Q23A, Q23B	TRANSISTOR, NPN, 40V, 0.2A, MMBT3904, SOT323	195357	
Q8, Q12	TRANSISTOR, NPN, 40V, 0.6A, SOT-23, 2222A	326376-0010	


MAIN-I/O PCB PARTS LIST

Integrated Circuit

Reference Designator	Description	Material Number	Note
U1	IC, ADC, AUDIO, 4CH, TLV320ADC5140, 24WQFN	855431-0010	
U10	IC, DAC, 24bit, 4CH, PCM4104, 48TQFP	855451-0010	
U12	IC, SCHMITT TRIGGER, BUFR, SINGLE INPT, 5.5V	727321-0010	
U13	IC, uC, CORTEX-M0, 256KB, 32F091, 100LQFP	852528-VCT6	
U14	IC, V-DETECT, 2.93V, APX809S-29, SOT-23	856551-0010	
U15A, U15B	IC, ANALOG SWITCH, SPST, 16TSSOP, DG411	852384-0010	
U16	IC, VREG, SW, BUCK, 2AD, ADJ, 62084, WSON8	791774-0020	
U17	IC, VOLT REG CTRL, SW, N-CH, LM3486, 10VSSOP	855905-0010	
U18	IC, DCDC CONV, BUCK, PWM, 1A, TSOT, LV2843	842705-0010	
U20,U23	IC,DCDC CONV,STEP DOWN,2A,28V,T-PS54202H	842669-0010	
U21	IC,VREG,LIN,POS,0.5A,15V,78M15C,DPAK	856494-0010	
U22	IC,VREG,LIN,NEG,0.5A,15V,79M15C,DPAK	856495-0010	
U26	IC,LOGIC,UHS BUFFER,DUAL,5V,SC70	763299-0010	
U28	IC, RCVR, RS485/RS422, MAX3283E, SOT23-6	855915-0083	
U2A, U2B	IC, OP AMP, DUAL, TL072	187619-001	
U6	IC, LED DRIVER, RGB, 12BIT, 18-CH, VQFN32	852362-0018	
U7-U8, U11	IC, OP AMP, DUAL, LOW-NOI, NJM2068M-TE2, DMP8	855835-01A2	
U9, U25C, U25D, U3A, U3B, U4A, U4B, U5A, U5B	IC, OP AMP, DUAL, NJM4580E-TE2, SOP8, 90DEG	855786-01A2	

MAIN-I/O PCB PARTS LIST

Miscellaneous

Reference Designator	Description	Material Number	Note
CN1	CONN, RECP, 1.27mm C, 16P, 2R, R, SMT, ST	847826-0016	
J1	CONN, RECP, 1.27mm C, 10P, 2R, R, SMT, ST	847826-0010	
J16B	CONN, RECP, 1.5mm C, 11P, 1R, R, SMT, RA, BEIGE	847823-0011	
J17B	CONN, RECP, 1.5mm C, 10P, 1R, R, SMT, RA, BEIGE	847823-0010	
J18B	CONN, RECP, 1.5mm C, 8P, 1R, R, SMT, RA, BEIGE	847823-0008	
J19A, J19B	CONN, IO, XLR, 3POLE, ST, R, PCB Mount	850870-0010	
J2	CONN, RECP, 2mm C, 2P, 1R, R, SMT, ST	847824-0002	
J21	CONN, HDR, 2.5mm C, 2P, 1R, P, SMT, ST	853441-0002	
J22B	CONN, HDR, 2.54mm C, 28P, 2R, P, SMT, ST, BLACK	847830-0028	
J4	CONN, IO, 6.35MM STERIO JACK, R, ST, PCB MOUN	849858-0010	
J5	CONN, IO, 3POLE XLR, P, Sel Gold	763327-0120	
T1	TRANSFORMER, AUDIO, DIGITAL, DIL, 1mH	856463-0010	3 
SW1-SW2, SW4, SW6-SW10	SWITCH, TACT, 12V, 50mA, 250gf	850862-0010	
SW3	SWITCH, TACT, 15V, 20mA, 320GF	854394-0010	

POWER-AMP PCB PARTS LIST

Resistors

Reference Designator	Description	Material Number	Note
R1, R41, R153-R155	JUMPER, CHIP, 0805	857326-0219	
R100	RES, THICK FILM, 0603, 0.1W, 1%, 200K	857326-0121	
R101	RES, THICK FILM, 0603, 0.1W, 1%, 18.2K	857326-0117	
R102-R103	RES, THICK FILM, 0603, 0.1W, 1%, 2.4K	857326-0132	
R104-R105	RES, THICK FILM, 1206, 0.25W, 1%, 100K	857326-0197	
R109, R126, R215, R220, R224, R256-R258, R263	JUMPER, CHIP, 0603	857326-0218	
R111	RES, THICK FILM, 0603, 0.1W, 1%, 75 OHM	857326-0177	
R116	RES, THICK FILM, 0603, 0.1W, 1%, 15 OHM	857326-0111	
R122	RES, THICK FILM, 0603, 0.1W, 1%, 5.1K	857326-0162	
R124, R129	RES, THICK FILM, 0603, 0.1W, 1%, 6.8K	857326-0171	
R127	RES, THICK FILM, 0603, 0.1W, 1%, 56K	857326-0167	
R128, R138, R143	RES, THICK FILM, 0603, 0.1W, 1%, 75K	857326-0176	
R132	RES, THICK FILM, 0603, 0.1W, 1%, 2K	857326-0119	
R134	RES, THICK FILM, 0603, 0.1W, 1%, 15K	857326-0109	
R136	RES, THICK FILM, 0603, 0.1W, 1%, 9.1K	857326-0180	
R14, R32, R42-R43, R66, R78, R81, R99, R106, R114, R130-R131, R137	RES, THICK FILM, 0603, 0.1W, 1%, 10K	857326-0093	
R15, R17	RES, METAL FOIL, 1206, 1W, 1%, 0.01 OHM	755170-R010F	
R156, R162, R254-R255	RES, THICK FILM, 0402, 0.063W, 1%, 10K	857326-0021	
R157	RES, THICK FILM, 0402, 0.063W, 1%, 470K	857326-0072	
R158, R163, R247, R277	RES, THICK FILM, 0402, 0.063W, 1%, 100K	857326-0022	
R159, R252	RES, THICK FILM, 0402, 0.063W, 1%, 30K	857326-0055	
R16, R36	RES, THICK FILM, 0603, 0.1W, 1%, 4.7 OHM	857326-0185	
R160, R274, R276	RES, THICK FILM, 0402, 0.063W, 1%, 47K	857326-0071	
R161	RES, THICK FILM, 0402, 0.063W, 1%, 5.23K	857326-0078	
R18, R21, R24, R26, R29, R31	RES, THICK FILM, 1206, 0.25W, 1%, 2 M	857326-0201	
R19-R20, R22-R23, R25, R117-R120	RES, THICK FILM, 1206, 0.25W, 1%, 2.2M	857326-0204	
R211, R213, R217, R227	RES, THICK FILM, 0402, 0.063W, 1%, 2.2K	857326-0044	
R212, R222, R230, R237-R238, R243, R278	JUMPER, CHIP, 0402	857326-0217	
R214	RES, METAL FOIL, 1206, 1W, 1%, 0.005 OHM	755170-R005F	
R216, R221	RES, THICK FILM, 0805, 0.125W, 1%, 3.3 OHM	857326-0193	
R223, R231, R246, R250, R253	RES, THICK FILM, 0402, 0.063W, 1%, 100 OHM	857326-0019	
R225-R226, R267-R268	JUMPER, CHIP, 1206	857326-0220	
R242	RES, THICK FILM, 0402, 0.063W, 1%, 22K	857326-0045	
R266	RES, THICK FILM, 1206, 0.25W, 1%, 1.3 OHM	857326-0213	

POWER-AMP PCB PARTS LIST

Resistors (continued)

Reference Designator	Description	Material Number	Note
R30, R259-R261	RES, THICK FILM, 1206, 0.25W, 1%, 3.3M	857326-0206	
R34-R35, R275	RES, THICK FILM, 0603, 0.1W, 1%, 22K	857326-0128	
R40	RES, THICK FILM, 0603, 0.1W, 1%, 220 OHM	857326-0126	
R44	RES, THICK FILM, 0603, 0.1W, 1%, 110K	857326-0099	
R45, R64, R89	RES, THICK FILM, 0603, 0.1W, 1%, 47K	857326-0156	
R46	RES, THICK FILM, 0603, 0.1W, 1%, 133K	857326-0104	
R47, R72, R79, R87	RES, THICK FILM, 0603, 0.1W, 1%, 100K	857326-0094	
R48	RES, THICK FILM, 0603, 0.1W, 1%, 130K	857326-0103	
R49-R51	RES, THICK FILM, 1206, 0.25W, 1%, 240K	857326-0205	
R4-R6, R10-R12	RES, THICK FILM, 1206, 0.25W, 1%, 1M	857326-0198	
R56, R69-R71	RES, THICK FILM, 1206, 0.25W, 1%, 2.2 OHM	857326-0214	
R58-R59, R121, R125	RES, THICK FILM, 0603, 0.1W, 1%, 1.5K	857326-0108	
R60	RES, THICK FILM, 0603, 0.1W, 1%, 470 OHM	857326-0154	
R62, R113	RES, THICK FILM, 0805, 0.125W, 1%, 100 OHM	857326-0186	
R63, R86, R265	RES, THICK FILM, 0603, 0.1W, 1%, 4.7K	857326-0155	
R7, R28, R90, R92, R96, R107	RES, THICK FILM, 0805, 0.125W, 5%, 4.7 OHM	857326-0194	
R73	RES, THICK FILM, 0603, 0.1W, 1%, 7.5K	857326-0175	
R74	RES, THICK FILM, 1206, 0.25W, 1%, 680 OHM	857326-0210	
R76-R77	RES, THICK FILM, 0603, 0.1W, 1%, 2.2K	857326-0127	
R8, R27, R52	RES, THICK FILM, 0805, 0.125W, 1%, 22 OHM	857326-0189	
R80, R82	RES, THICK FILM, 0603, 0.1W, 1%, 100 OHM	857326-0091	
R84-R85, R88	RES, THICK FILM, 1206, 0.25W, 1%, 20K	857326-0200	
R91, R139, R264	RES, THICK FILM, 0603, 0.1W, 1%, 3.3K	857326-0144	
R93, R112	RES, THICK FILM, 0603, 0.1W, 1%, 1M	857326-0095	
R94, R98, R110, R115	RES, THICK FILM, 1206, 0.25W, 1%, 220 OHM	857326-0203	
R95, R135, R140-R142	RES, THICK FILM, 0603, 0.1W, 1%, 1K	857326-0092	
R97, R108	RES, THICK FILM, 0805, 0.125W, 1%, 33 OHM	857326-0190	




POWER-AMP PARTS LIST

Capacitors

Reference Designator	Description	Material Number	Note
C101	CAP, C0G, 0603, 50V, 5%, 220pF, COMM	780788-221J1H	
C132, C141, C225, C229, C235, C258	CAP, X7R, 0402, 50V, 10%, 0.1uF, COMM	718866-104K1H	
C213-C215, C222-C223, C227	CAP, X7R, 0402, 100V, 10%, 2200pF, COMM	718866-222K2A	
C216, C232	CAP, FILM, LS 5mm, AMMO, 5%, 100V, 1uF	329288-1004BJA	
C217, C219, C231, C233	CAP, X7R, 0805, 100V, 20%, 0.01uF, COMM	763872-103M2A	
C218, C230	CAP, C0G, 0805, 100V, 5%, 1000pF, COMM	763940-102J2A	
C224, C226, C247, C249	CAP, X7R, 0402, 50V, 10%, 0.033uF, COMM	718866-333K1H	
C228, C239	CAP, EL, SMT, 105C, 16V, 20%, 10uF, COMM	856752- 100M1CAB	
C234, C238	CAP, C0G, 0402, 50V, 5%, 100pF, COMM	766718-101J1H	
C236-C237	CAP, X5R, 0402, 16V, 10%, 1uF, COMM	716994-105K1C	
C26	CAP, FILM, PFC, 15mm, BULK 6mm, 630V, 10%, 1uF	856507- 105K2JBB	
C261	CAP, X7R, 0402, 25V, 10%, 0.047uF, COMM	718866-473K1E	
C275-C276, C278-C279	CAP, X7R, 0805, 100V, 10%, 0.1uF, COMM	763872-104K2A	
C282-C283	CAP, X5R, 0603, 6.3V, 20%, 10uF, COMM	718835-106M0J	
C29-C30	CAP, X7R, HI VOLT, 0805, 630V, 10%, 4700pF, COM	852020-472K2J	
C31	CAP, EL, SNAP-IN, 450V, 20%, 330uF	853707- 331M2WCC	
C37-C38, C66-C67, C81-C82, C98, C135-C140	CAP, X5R, 0603, 25V, 10%, 4.7uF, COMM	718835-475K1E	
C40, C42-C43, C58-C59, C61, C68, C91-C93, C95, C108-C109	CAP, C0G, 0603, 50V, 5%, 1000pF, COMM	780788-102J1H	
C41, C85	CAP, C0G, 0603, 50V, 5%, 330pF, COMM	780788-331J1H	
C45, C48-C51, C80	CAP, X7R, 0805, 25V, 10%, 1uF, COMM	763872-105K1E	
C46	CAP, X7R, 0603, 100V, 10%, 220pF, COMM	718875-221K2A	
C47, C69-C70, C75	CAP, X7R, HI V, 1206, 1000V, 10%, 4700pF, COMM	852057-472K3A	
C52-C53	CAP, EL, LOW Z, SMT, 35V, 20%, 470uF, COMM	856727- 471M1VEF	
C55	CAP, EL, POLYMER, SMT, 25V, 20%, 47uF, COMM	857020- 470M1EAA	
C60	CAP, X7R, 0603, 50V, 10%, 0.047uF, COMM	718875-473K1H	
C62, C64-C65, C110-C111, C113-C116, C284-C285	CAP, X7R, 0603, 100V, 10%, 0.1uF, COMM	718875-104K2A	
C73	CAP, X7R, 0603, 50V, 10%, 1uF, COMM	718875-105K1H	

POWER-AMP PCB PARTS LIST

Capacitors (continued)


Reference Designator	Description	Material Number	Note
C76-C77	CAP, X7R, HI V, FT, 1210, 500V, 10%, 0.1uF, COMM	852058-104K2H	
C78	CAP, X7R, 0603, 50V, 10%, 0.47uF, COMM	718875-474K1H	
C8, C17, C39, C97	CAP, X7R, 0603, 50V, 5%, 10000pF, COMM	718875-103J1H	
C83, C100	CAP, C0G, 0805, 250V, 5%, 100pF, COMM	763940-101J2E	
C84, C86	CAP, X7R, HI VOLT, 0805, 500V, 10%, 470pF, COMM	852020-471K2H	
C87-C88, C265-C266	CAP, EL, LOW Z, 18x25mm, 80V, 20%, 820uF	853760-821M1K-GG	
C89-C90, C267-C274	CAP, X7R, 0805, 100V, 10%, 0.47uF, COMM	763872-474K2A	
C94	CAP, C0G, HI VOLT, 1206, 500V, 5%, 15pF, COMM	777098-150J2H	
C96	CAP, FILM, HI V, 15mm, BULK, 1000V, 5%, 0.68uF	856510-683J3ABB	
C99, C134	CAP, X7R, 0603, 50V, 10%, 0.22uF, COMM	718875-224K1H	
CN1	CONN, HDR, 3.96mm C, 2P, 1R, P, TH, ST, WHITE	847743-0020	
CX1-CX2	CAP, FILM, X2, LS 15mm, 305VAC, 20%, 0.47uF	310415-474MG	3 
CY1-CY5	CAP, CER, X1/Y1, Bulk 25mm, 10%, 470pF	855444-471KG	3 
CY6	CAP, CER, X1/Y1, Bulk 5mm, 20%, 1000pF	855444-102MN	3 

Diodes

Reference Designator	Description	Material Number	Note
BD1	DIODE BRIDGE, RECT., 15A, 600V	311087-0600	
D11, D18-D22	DIODE, RECT, FAST, 1000V, 0.8A, RS1ML, FLSMA	856386-1000	
D14, ZD7-ZD10	DIODE, ZENER, 0.2W, 15V, 5%, SOD-323F	856094-15V0	
D23, D26, D28, D34-D35	DIODE, SWITCHING, 100V, 0.15A, SOD323F	856395-0010	
D6-D7	DIODE, SINGLE, 600V, 5A, RFNL58M6S, TO-252	849891-0010	
D8, D25, D27	DIODE, RECT, ULTRAFast, 200V, 6A, TPUH6D, SMPC	855862-0200	
D9, D48	DIODE, RECT, FAST, 1000V, 1A	317066-1000	
LED1-LED2	DIODE, LED, 0603, WHITE, VERT	851300-0010	
ZD2-ZD4	DIODE, ZENER, 0.2W, 5.1V, 5%, SOD-323F	856094-05V1	

POWER-AMP PCB PARTS LIST


Inductors

Reference Designator	Description	Material Number	Note
L1, L4	TRANSFORMER, CUSTOM, HTS-PQ26F	856524-0010	3 
L18-L19	INDUCTOR, CLASS D, POWER, 30A, 30%, 6.8uH	856095-6R8N	
L2-L3	INDUCTOR, CUSTOM, COMMON MODE, RADIAL, 12mH	852647-0010	
L9	INDUCTOR, POWER, SMT, 4.2A, 20%, 10uH, COM	852883-100M	

Transistors






Reference Designator	Description	Material Number	Note
Q1, Q3, Q11-Q12	TRANSISTOR, MFET, N-CH, 600V, 18A, DPAK	849830-0020	
Q10, Q15, Q19, Q21	TRANSISTOR, NPN, 40V, 0.2A, MMBT3904, SOT323	195357	
Q14	TRANSISTOR, MFET, P-CH, -3.8A, -30V, SOT23	852237-0010	
Q2, Q4	TRANSISTOR, PNP, 600mA, 60V, SOT23	852391-0010	
Q20, Q22	XSISTOR, BPLR, P, 40V, 200mA, SOT23	148596	
Q8	TRANSISTOR, NPN, 3A, 50V, SOT89	852881-0010	
Q9	TRANSISTOR, MFET, N-CH, 0.3A, 60V, SOT-23	356154-0010	

Integrated Circuit

Reference Designator	Description	Material Number	Note
U1	IC, PFC CONTROLLER, TRANS MODE, UCC28063	730085-0030	
U12	IC, DCDC CONV, STEP DOWN, 2A, 28V, TPS54202H	842669-0010	
U2, U5-U6, U8	IC, OPTOCOUPLER, EL817, 4SO	326344-0020	3 
U20	IC, PWR AMP, CLASS D, TPA3255, 44HTSSOP	792785-0010	
U3	IC, VREG, SW, FLYBACK CNTRLR, HF500-30, 7PDIP	855588-0010	
U4, U10	IC, LIN REG, ADJ, SHUNT, TL431, 1%, SOT23-3	330361-1030	
U7	IC, SW, CNTRLR, HALF-BRIDGE, HR1001A, 16SOIC	855754-0010	
U9	IC, OP AMP, DUAL, LM358, 8SOIC	856447-0010	

POWER-AMP PCB PARTS LIST

Miscellaneous

Reference Designator	Description	Material Number	Note
F1	FUSE, 8A, 250V, SLO-BLO, 5x20mm, AXIAL	317834-083B	3 
J2	CONN, HDR, 2.54mm C, 28P, 2R, P, TH, ST, BLACK	847835-0028	
J3	CONN, HDR, 2mm C, 2P, 1R, P, SMT, ST	847747-0020	
J5	CONN, HDR, 1.25mm C, 4P, 1R, P, SMT, ST	845374-0401	
J6	CONN, HDR, 3.96mm C, 2P, 1R, P, TH, RA, WHITE	847740-0020	
RT1	THERMISTOR, NTC, ICL, BULK, 20%, 10 ohm	856032-100MB	3 
RT2	VARISTOR, METAL OXIDE, DIA 14mm, 300Vrms	856832-3000D	3 
RT3-RT4	THERMISTOR, NTC, 0603, 3380K, 1%, 10K	855644-103F	
T1	TRANSFORMER, CUSTOM, HTS-EEL25A	852657-0010	3 
T2	TRANSFORMER, SWITCH, CUSTOM, HTS-ER40F	852655-0010	3 

VOLUME PCB PARTS LIST

Resistors

Reference Designator	Description	Material Number	Note
R71-R72	RES, THICK FILM, 0402, 0.063W, 1%, 6.8K	857326-0084	
R73-R83	RES, THICK FILM, 0402, 0.063W, 1%, 10K	857326-0021	

Capacitors

Reference Designator	Description	Material Number	Note
C1, C3, C8, C10, C12-C13	CAP, X7R, 0402, 25V, 10%, 0.1uF, COMM	718866-104K1E	
C14-C15	CAP, X5R, 0402, 25V, 20%, 1uF, COMM	716994-105M1E	
C2, C4	CAP, EL, SMT, 105C, 16V, 20%, 22uF, COMM	856752-220M1CBB	
C5-C6, C11, C16-C33	CAP, X7R, 0402, 50V, 10%, 10000pF, COMM	718866-103K1H	
C7, C9	CAP, X5R, 0603, 10V, 10%, 10uF, COMM	718835-106K1A	

Diodes

Reference Designator	Description	Material Number	Note
D1-D8	VARISTOR, MULTILAYER, 0402, 130pF, 12V	855757-120M131	
LED1-LED33, LED35-LED38, LED40-LED41, LED43-LED53	DIODE, LED, 0603, WHITE, VERT	851300-0010	
LED34, LED39, LED42	DIODE, LED, 0603, RED, GREEN, VERT	851301-0010	

Integrated Circuit

Reference Designator	Description	Material Number	Note
U1-U2	IC, LED DRIVER, RGB, 12BIT, 36-CH, VQFN46	852363-0036	

Miscellaneous

Reference Designator	Description	Material Number	Note
J1	CONN, HDR, 1.5mm C, 10P, 1R, P, SMT, ST, BEIGE	847746-0100	
J2	CONN, HDR, 1.5mm C, 11P, 1R, P, SMT, ST, BEIGE	847746-0110	
L3-L12	BEAD, FERRITE, 0402, 0.1A, 1800 OHM, COMM	840686-182D	
SW1-SW3	ENCODER, ROTARY, SWITCH, XRE0126	850872-0010	

DISASSEMBLY PROCEDURE

L1 Pro32 Power Stand Procedures

CAUTION: The SMD integrated circuits used on the Main-I/O Board are extremely sensitive to ESD damage. Be sure to use an approved and tested ESD strap that is properly grounded to your work bench before attempting disassembly or repair of the L1 Pro32 Power Stand.

1. Bottom Cover Removal

1.1 Remove the Upper mid-high array and Lower mid-high array. Put the Power stand upside down. Figure 4.

1.2 The PC sheets ① ④ ⑥ and Rubber feet ② ③ ⑤ ⑦ secured with Pressure Sensitive Adhesive - use a spudger, lift the PC sheets up and Rubber feet, grasp and pull them off. Figure 5.

Re-assembly Note: Be careful to not cause cosmetic damage to the unit.

Use the new PC sheets and Rubber feet to ensure proper adhesion during reassembly.

1.3 Remove the 13 screws securing the Bottom Cover as indicated in Figure 6.



Figure 4. PC Sheets & Rubber Feet Location



Figure 5. PC Sheets & Rubber Feet Removal



Figure 6. Bottom Cover Screws Removal

DISASSEMBLY PROCEDURE

1.4 Use your hands and lift up on the Bottom Cover as indicated in Figure 7.

1.5 Once the Bottom Cover is out from the Top Cover, you will notice that the 2 cables ① ③ & the 1 FFC cable ② are attaching the Main-I/O board from Air fan baffle and Power-Amp Board. Figure 8.

Re-assembly Note:

If the Ferrite bead is in the position as indicated in Figure 8 (left), unwrap the adhesive foam and move it to the position Figure 8 (right) to not get wedged in between the plastic fan housing and any electrolytic capacitors on the board when reassembling.

2. Main-I/O Board Removal

2.1 Perform procedure 1.

2.2 Remove the green adhesive with IPA (Isopropyl alcohol) from the ④ ⑤ cables' connections with Volume board. Figure 9

2.3 Remove the green adhesive ③ holding the Bluetooth antenna cable and disconnect the Bluetooth antenna connector as the red arrow indicated in Figure 9.

2.4 Remove the 7 screws securing the Main-I/O board. Figure 9.

2.5 Pull the 3 Volume knobs out. Figure 10 (left).

2.6 The PC sheet top cover are secured with Pressure Sensitive Adhesive - use a spudger, lift the Top cover up and grasp and pull them off. Figure 10 (right).

Note: Use a heat gun, gently heating the whole top surface moved around the area to help loose the adhesive.

Re-assembly Note:

Use a new replacement PC sheet top cover to ensure proper adhesion during reassembly.
PN: 843967-0110



Figure 7. Bottom Cover Removal

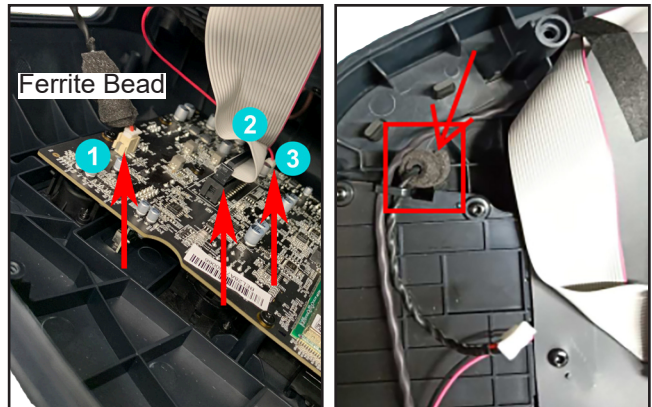


Figure 8. Detach Cables Connection & Ferrite Bead Position

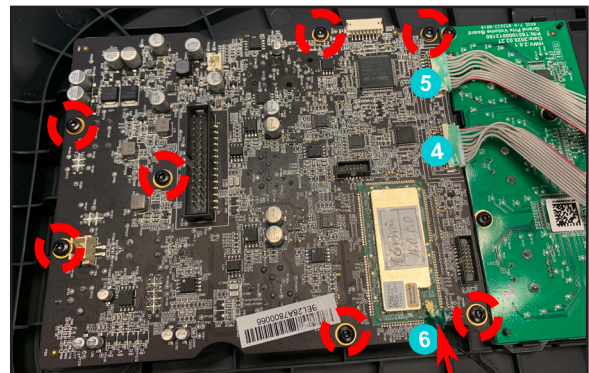


Figure 9. Main-I/O Board Green Adhesive & Screws Removal



Figure 10. Volume Knobs & Top Cover Removal

DISASSEMBLY PROCEDURE

2.7 On the Top cover, remove the 8 screws securing the 4 Jacks. Figure 11 (left).

2.8 Use a nut driver or socket to turn ¼ turn to remove the 1/4' Jack socket nut out as the red arrow indicated in Figure 11 (right).

Re-assembly Note:

There are no Device ID concerns when replacing the main board. The Device ID is assigned at the factory. Service replacement Main-I/O PCBA's use the PCBA serial number instead of the system serial number. As a result, the system serial number will not show up in the L1 Mix app.

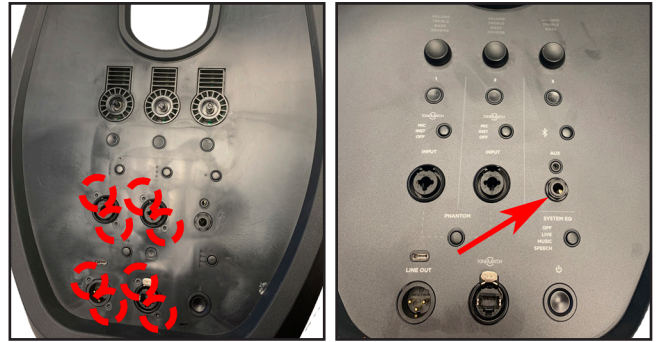


Figure 11. 4 Jacks and Jack Socket Nut Removal

3. Power-Amp Board Removal

3.1 Perform procedure 1.

3.2 Remove the 5 screws that secured the PP Sheet as indicated in Figure 12 (left).

3.3 Remove the 5 screws that secured the Array base bracket as indicated in Figure 12 (right).

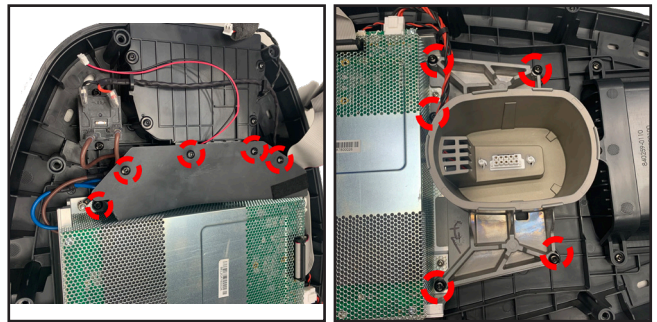


Figure 12. PP Sheet & Bracket Removal

3.4 Disconnect the 6 wires connection. Cable ④ is to 250V Relay. Cables ⑤ ⑥ are from Array base bracket. Figure 13.

3.5 Remove the 4 screws securing the Power-Amp board. Figure 13.

3.6 Use a spudger to separate the white glue from the edge of PCB as red arrow indicated in Figure 14.

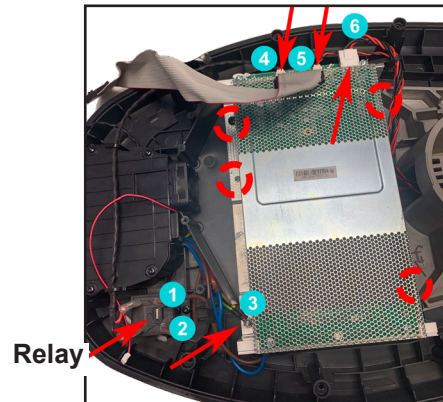


Figure 13. Detach Cables Connection

Note: When installing the Shield cover, RTV need to be used to prevent buzz and vibration

3.7 Remove the 2 screws securing the Shield cover. Figure 14.

Re-assembly Note:

The old power amp IC thermal grease must be removed with isopropyl alcohol and the new thermal grease, GAP FILLER, THERMAL, part number 749859-0020 MUST be used during board replacement.

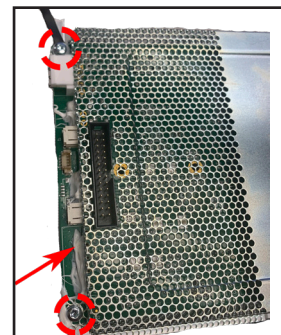


Figure 14. White Glue & Screws Removal

DISASSEMBLY PROCEDURE

4. Volume Board Removal

6.1 Perform step 1.

6.2 Remove the 4 screws that secure the Volume board as indicated in Figure 15.

6.3 Push the 3 Volume buttons out and lift off the board.

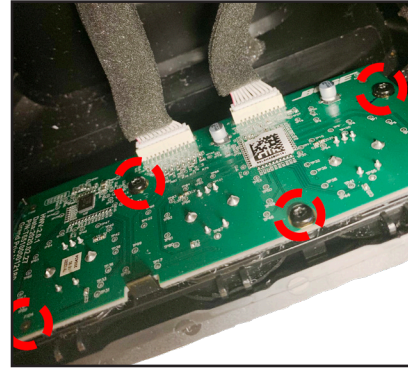


Figure 15. Volume Board Screws Removal

L1 Pro32 Upper Mid-high Array Procedures

1. Grille Removal

1.1 Remove the 8 screws that secure the Endcaps from both ends of the Upper Array as indicated in Figure 16.



Figure 16. Both Ends of Endcaps Screws Removal

1.2 Lift off both endcaps. Figure 17.

Note: Be careful the cable of one of endcaps is very short.

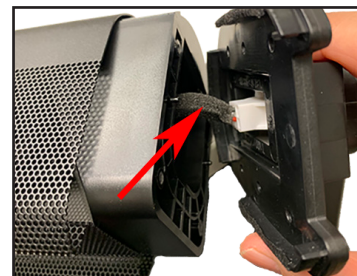


Figure 17. One Endcap Removal

1.3 Grasp the Grille and carefully slide the grille off of the baffle. Figure 18 (left).

Re-assembly Note: Be sure there is sufficient gasket material on the Grille to prevent buzzes as the red arrow indicated in Figure 18 (right).

Gasket material PN: 843112-0101

Perform the Array sweep tests after replacing the Grille.



Figure 18. Array Grille Removal & Gasket Material Location

DISASSEMBLY PROCEDURE

2. Drivers Removal

2.1 Perform procedure 1.

2.2 Remove the 4 screws securing the 1 Driver to the Baffle as indicated in Figure 19 (left).

2.3 Detach the Driver's cable by pressing the white fastener. Figure 19 (right).

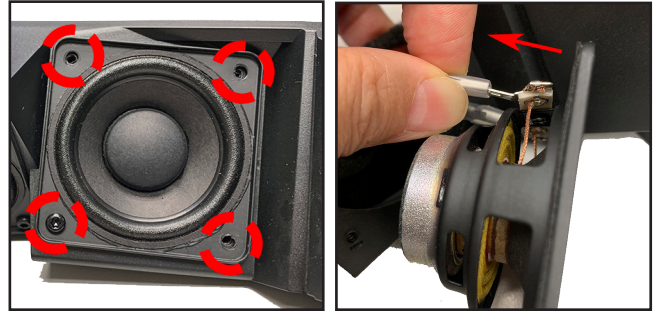


Figure 19. Driver Screws & Cable Removal

L1 Pro32 Lower Mid-high Array Procedures

1. Grille Removal

1.1 Remove the 8 screws that secure the Endcaps from both ends of the Upper Array as indicated in Figure 20.

1.2 Same procedures as Upper Array disassembly from step 1.2 to step 2.3.

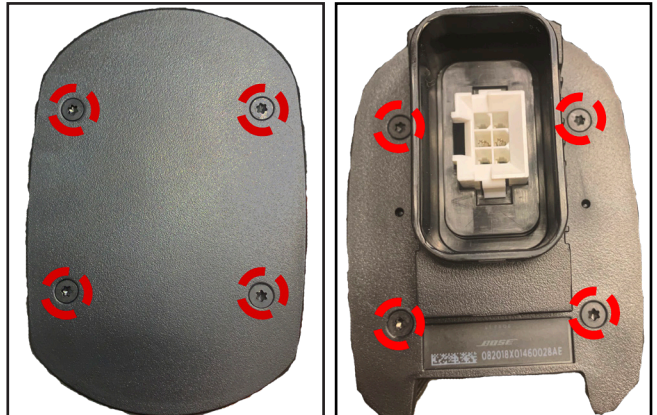


Figure 20. Both Ends of Endcaps Screws Removal

SOFTWARE UPDATE

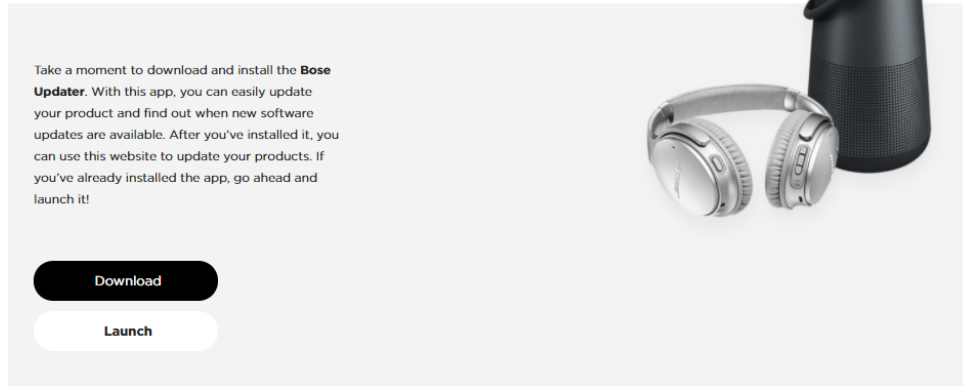
These instructions explain how to update the firmware of your L1 Pro8, L1 Pro16, L1 Pro32, Sub1, or Sub2.

Note: A USB-C cable is required (not included with your product). The L1 Pro family of products is not compatible with Thunderbolt 3 cables.

1. On a computer, open a web browser and go to **btu.bose.com**.
Note: Not compatible with Internet Explorer or Safari.
2. Click **Download** to download the **Bose Updater**.

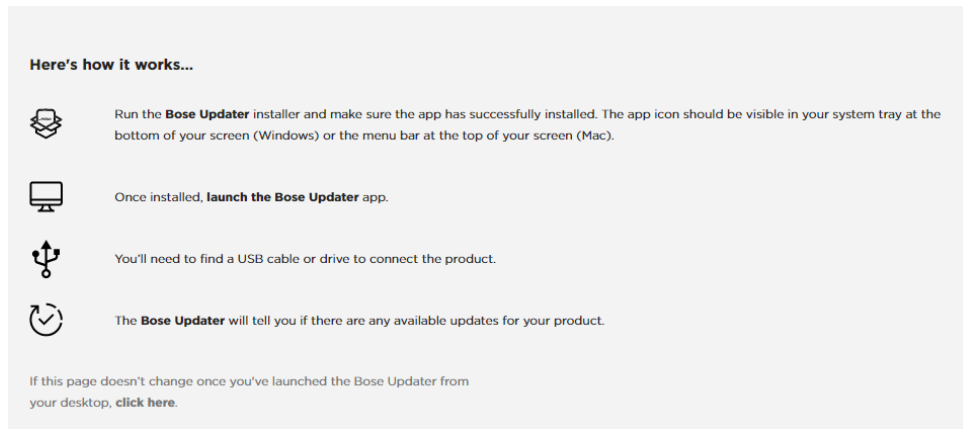
Compatible Web Browsers	
Windows	Google Chrome, Mozilla Firefox, Microsoft Edge
Mac	Google Chrome, Mozilla Firefox

Bose Updater



3. View the End-User License Agreement, then click **I Agree**.
4. Install the **Updater**.

Bose Updater

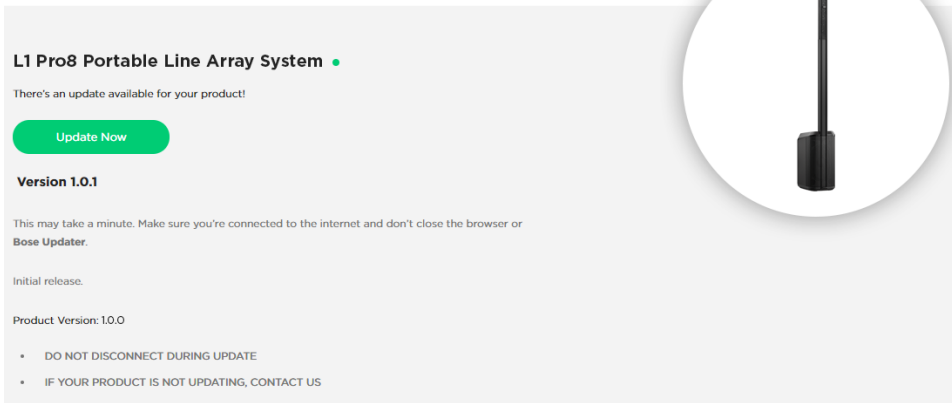


5. Once installed, open the **Updater**.
6. Plug your product into a power source.
7. Connect your product to your computer using a USB-C cable. The **Updater** will identify your product automatically.

SOFTWARE UPDATE

8. If your product needs a software update, your screen will read, **There's an update available for your product!**

Bose Updater



L1 Pro8 Portable Line Array System ●

There's an update available for your product!

[Update Now](#)


Version 1.0.1

This may take a minute. Make sure you're connected to the internet and don't close the browser or **Bose Updater**.

Initial release.

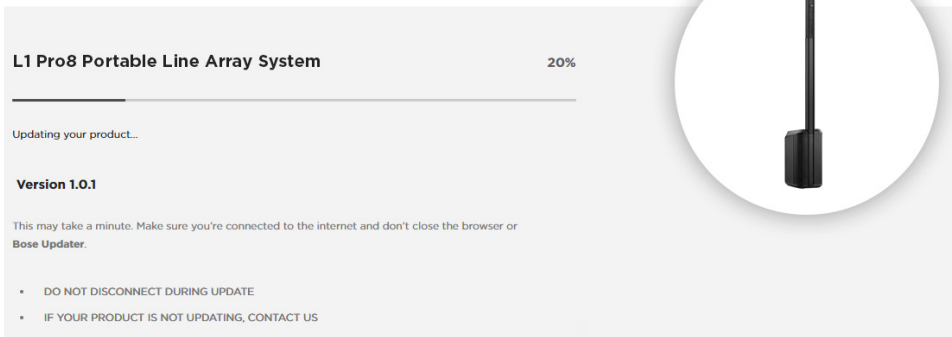
Product Version: 1.0.0

- DO NOT DISCONNECT DURING UPDATE
- IF YOUR PRODUCT IS NOT UPDATING, CONTACT US



9. Click **Update Now**.
Note: Do not unplug or power off your product while the update is in progress.

Bose Updater




L1 Pro8 Portable Line Array System 20%

Updating your product...

Version 1.0.1

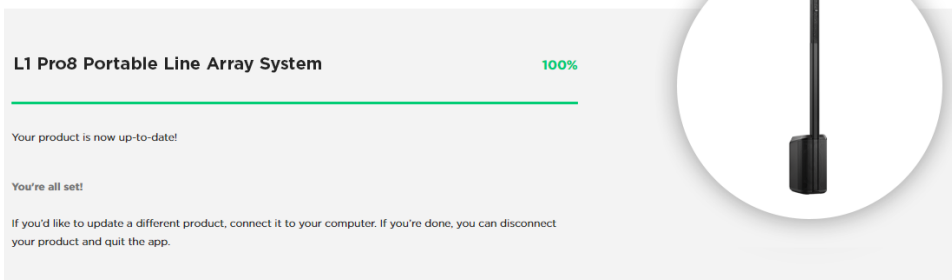
This may take a minute. Make sure you're connected to the internet and don't close the browser or **Bose Updater**.

- DO NOT DISCONNECT DURING UPDATE
- IF YOUR PRODUCT IS NOT UPDATING, CONTACT US



10. Once the update is complete, your screen will read, **Your product is now up-to-date!**

Bose Updater




L1 Pro8 Portable Line Array System 100%

Your product is now up-to-date!

You're all set!

If you'd like to update a different product, connect it to your computer. If you're done, you can disconnect your product and quit the app.



SERVICE MANUAL REVISION HISTORY

Date	Revision Level	Description of Changes	Changes Driven By	Pages (s) Affected
1/11/2021	00	Document released at revision 00	Initial Release	ALL
2/17/2022	01	Add some items to be spare parts		Page 9
11/3/2023	02	Add Base match cable partnumber		Page 12

BOSE®
Better sound through research®

Bose Corporation
100 The Mountain Road
Framingham Massachusetts USA 01701

Reference Number 840921-SM REV 02, 11/2023
<http://serviceops.bose.com>