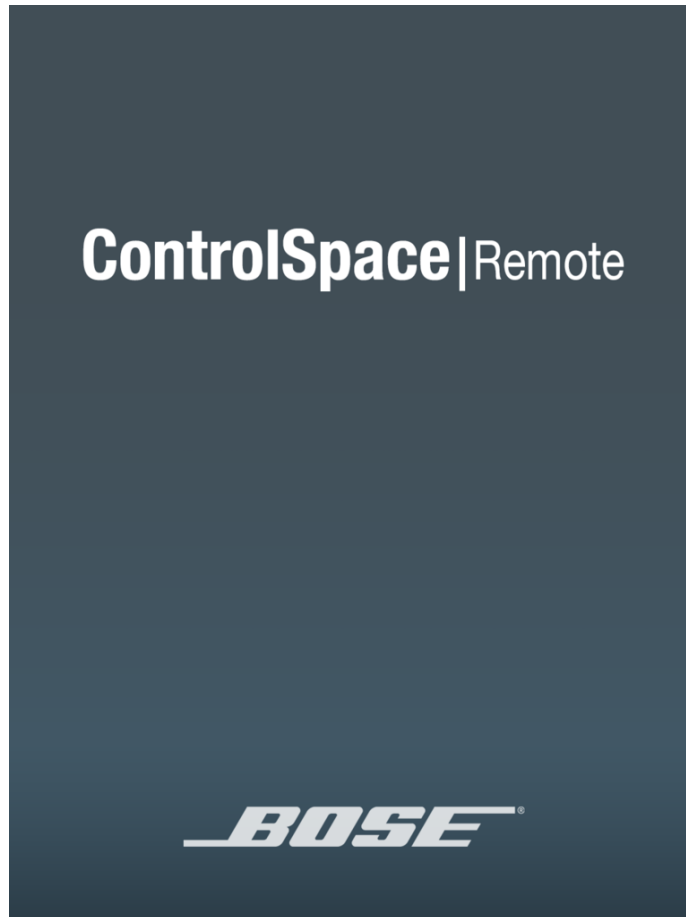


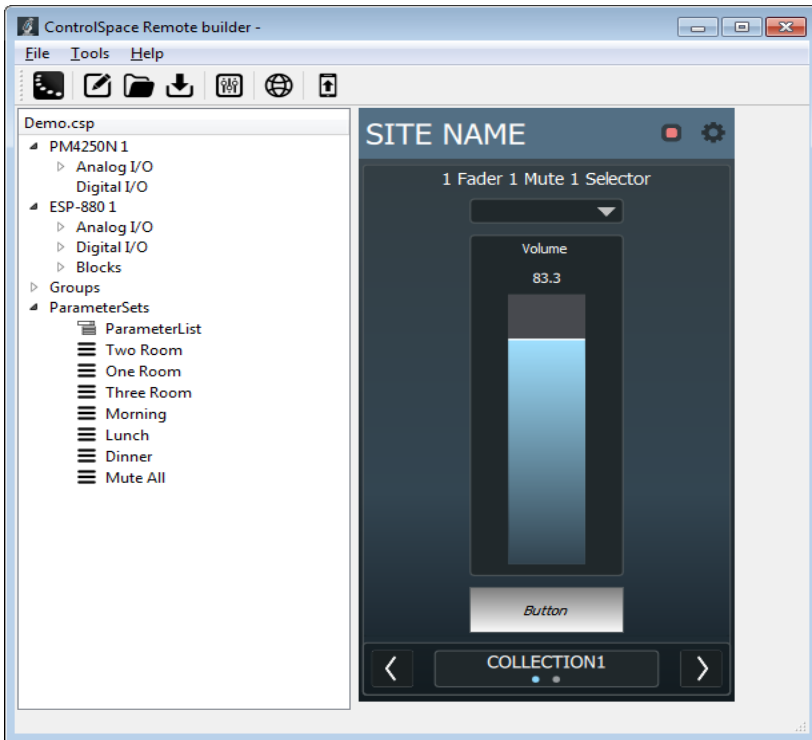
ControlSpace® Remote Builder 1.0

User's Guide

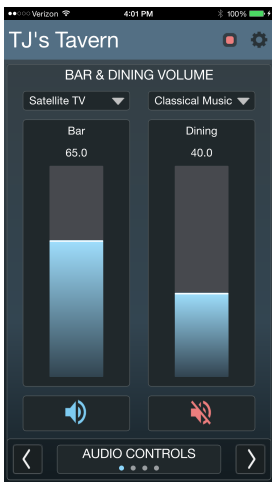


Product Overview

Bose® ControlSpace® Remote builder software is a graphical user interface tool used to design, test and deploy mobile control panels for the Bose ControlSpace Remote app.



ControlSpace Remote builder PC App Window Example



ControlSpace Remote App Control Panel Example

Bose ControlSpace Remote builder is used by system integrators to configure control panels that are sent to the ControlSpace Remote app. Using control panel templates from within ControlSpace Remote builder, integrators are able to quickly create unique interfaces for wireless control of Bose networked pro audio systems.

System designs created in ControlSpace Designer™ software are easily imported into ControlSpace Remote builder. Defined system control elements such as volume, mute, source selection, tone EQ, and parameter sets are assigned to end-user friendly templates. Multiple app designs – each personalized for a specific

user's control needs – can be created and tested from ControlSpace Remote builder and sent wirelessly to mobile devices on the control network.

To get started:

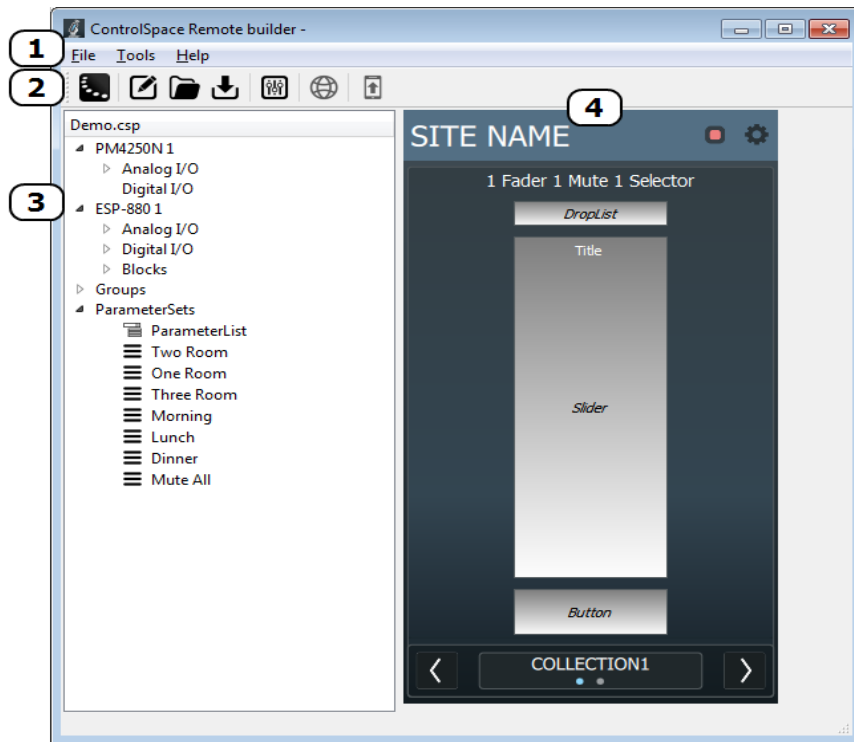
1. From pro.Bose.com, download and install the ControlSpace Remote builder desktop app to your computer.
2. From the Google Play™ or Apple App Store, download and install the ControlSpace Remote app to your mobile device.
3. Ensure that your Android™ or Apple device is connected to the same Wi-Fi® network as your ControlSpace/PowerMatch devices.

Android and Google Play are trademarks of Google, Inc.

App Store is a service mark of Apple, Inc.

Wi-Fi is a registered mark of the Wi-Fi Alliance.

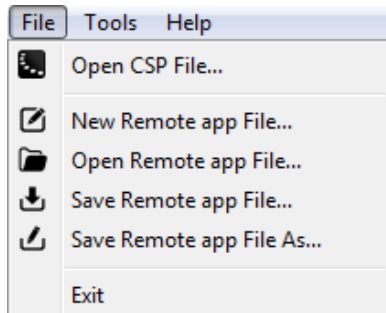
Remote builder Window



Remote builder Window Elements

Menus [1]

File Menu



Open CSP file... opens a window for browsing to an existing ControlSpace Designer software project file.

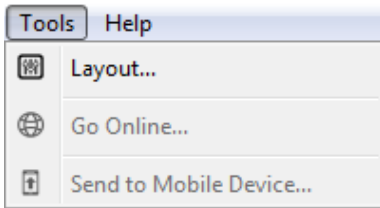
New Remote app File... opens a window in which you can select a template to use for building a new Remote app control panel.

Open Remote app File... opens a window for browsing to an existing Remote app file.

Save Remote app File... initially opens a window for naming the current Remote app file and browsing to a location to save it. Subsequent selections of this menu option will immediately save changes directly to the previously selected file location.

Save Remote app File As... opens a window for renaming current Remote app file and browsing to a location to save it.

Tools Menu

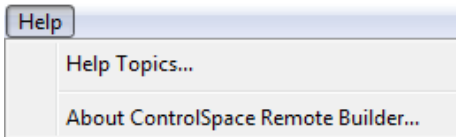


Layout... opens the Layout dialog which allows you to add/delete collections and panels.

Go Online... connects to a ControlSpace network.

Send to Mobile Device... transmits the control panel file to a mobile device.

Help Menu



Toolbar [2]



Open CSP File



New Remote app File



Open Remote app File



Save Remote app File



Layout



Go Online



Send to Mobile Device

ControlSpace Designer Project File Devices and Controls [3]

This panel displays a tree view of devices and controls in the opened project file.

Control Panel Workspace [4]

This panel displays the canvas view of control panel designs.

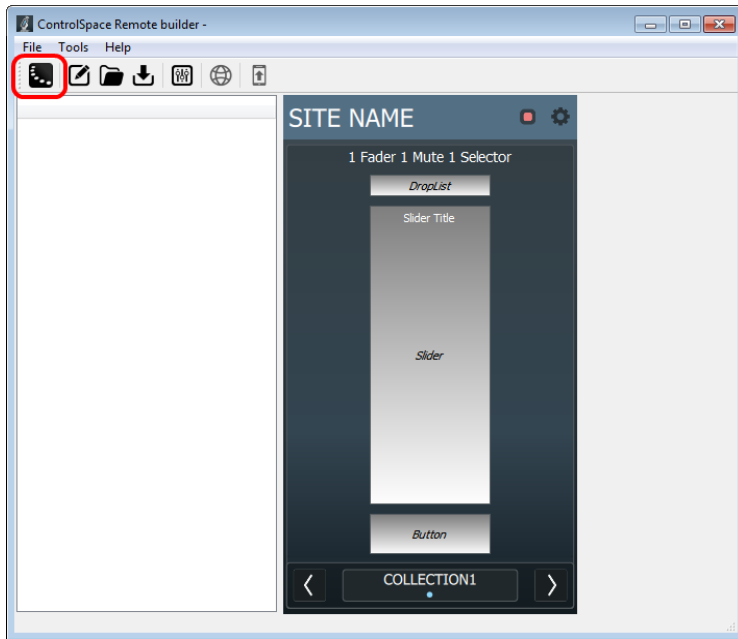
Creating Control Panels

1. Open the Remote builder app on your computer using the desktop icon.



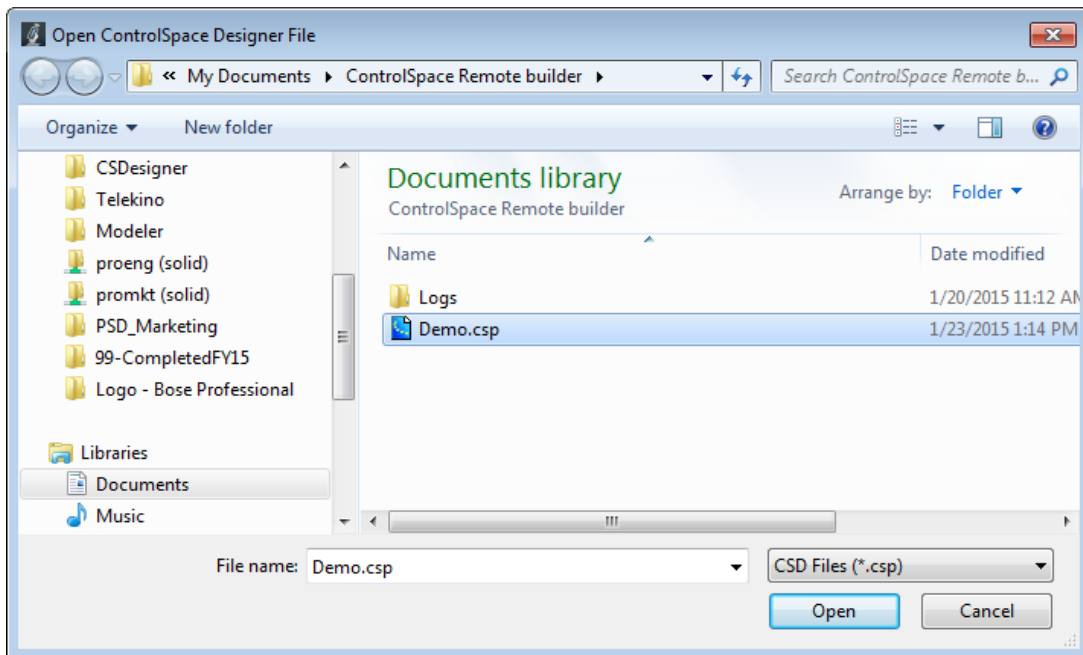
ControlSpace Remote builder desktop icon

2. In the Remote builder Window, click the Open CSP File icon.



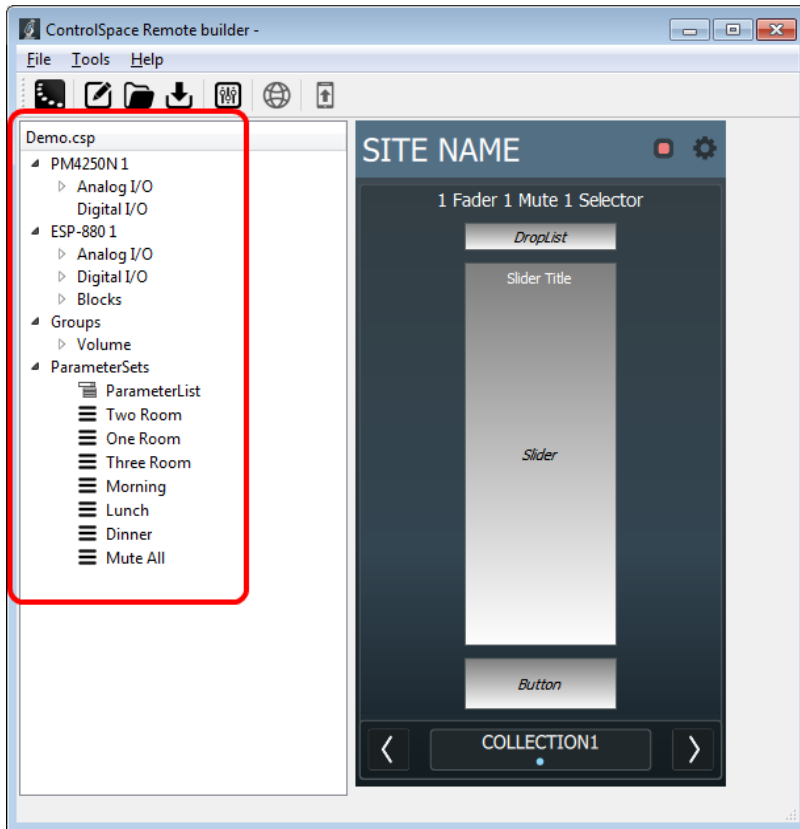
Opening a ControlSpace Project File

3. From the dialog window, select the ControlSpace Designer project file you created and click **Open**.



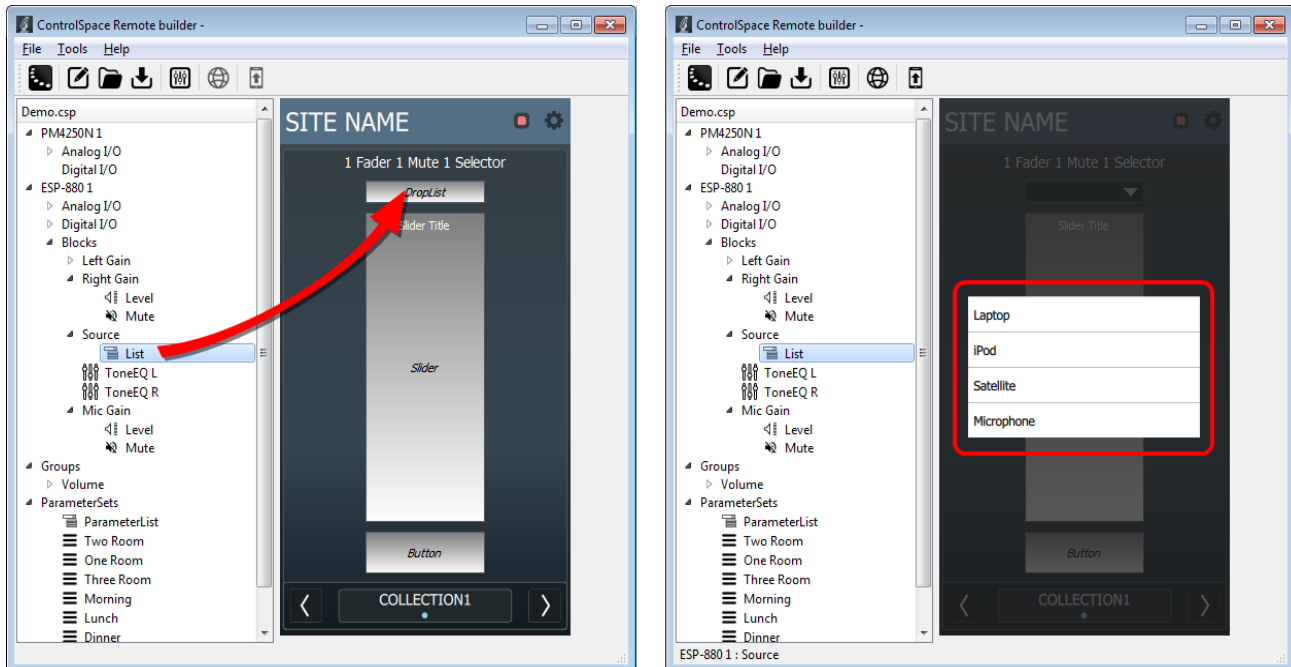
Selecting a Project File

4. Check that all the devices and controls in that project are listed in the window.

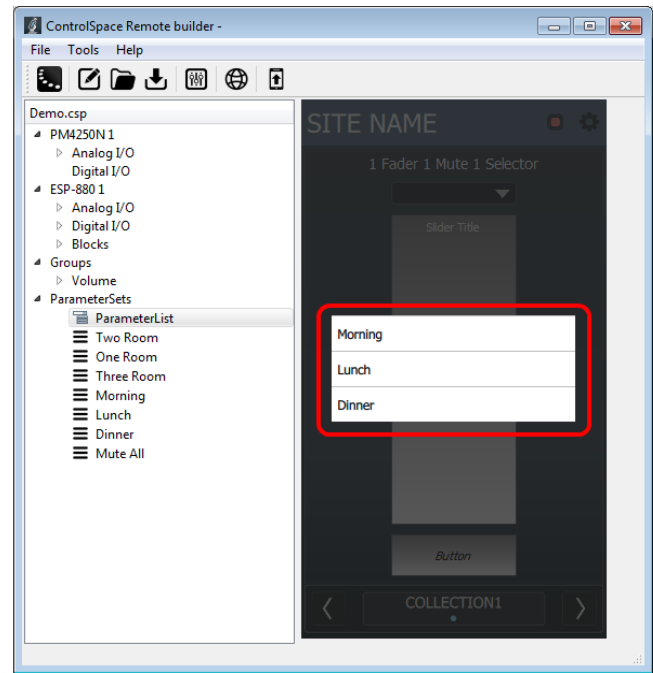
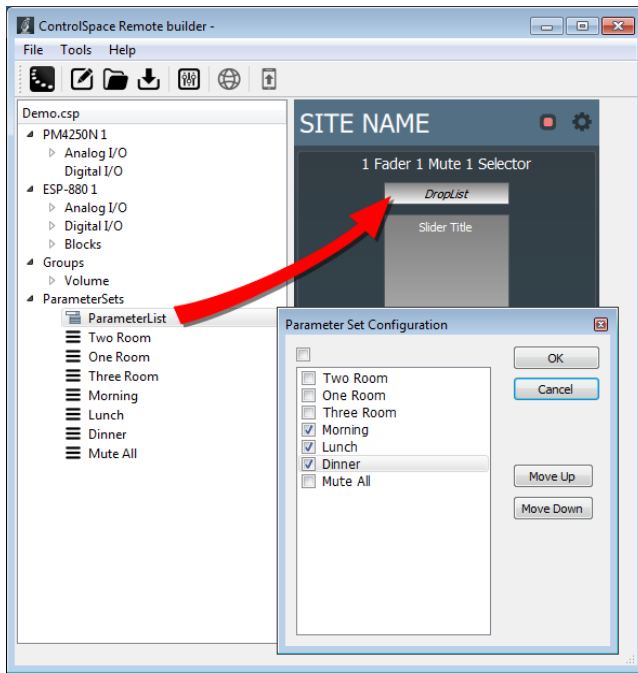


Project File Devices and Controls

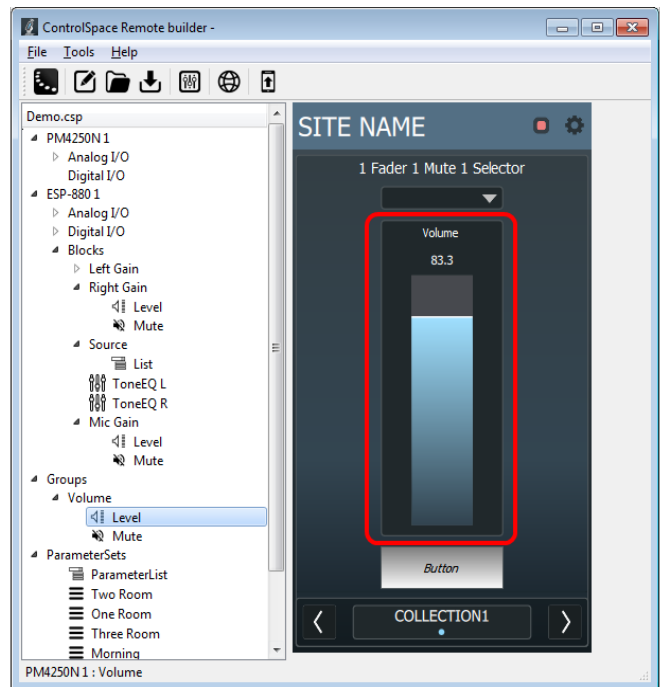
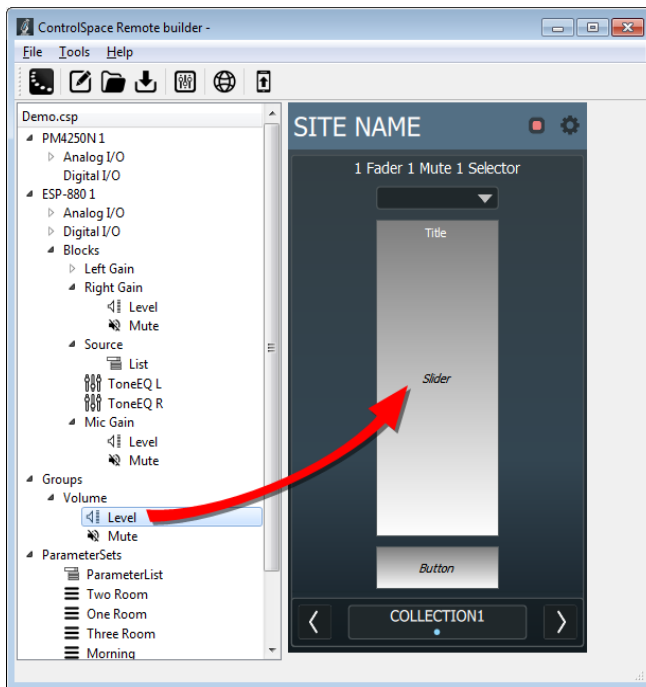
5. Drag controls to the pre-defined locations on the control panel template.
For example....



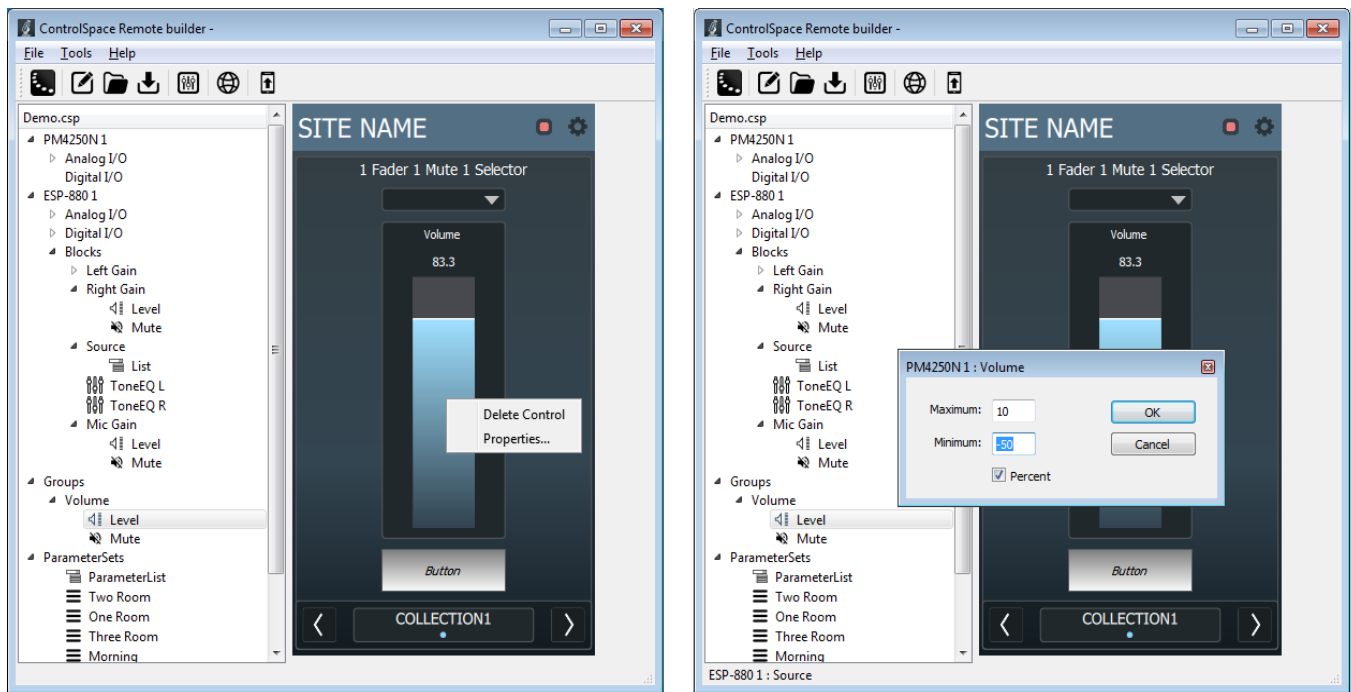
Dragging a Source list to the Drop List.



Dragging a Parameter Set List to the Drop List



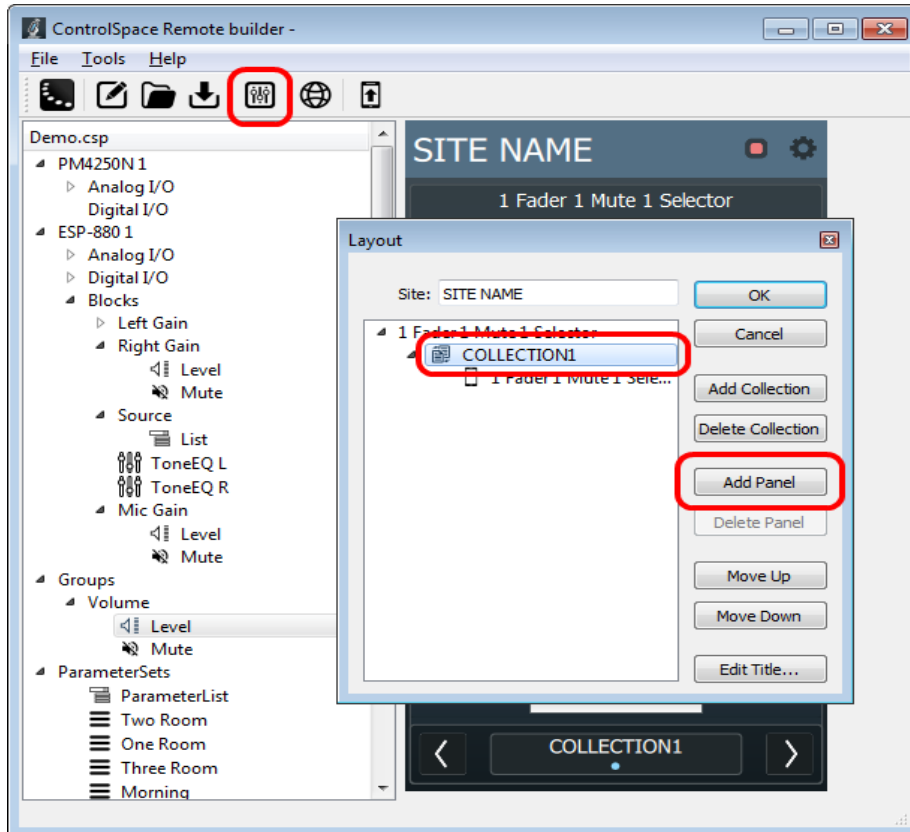
Dragging the group volume gain to the slider and group mute to the Mute button.



Right-click Menu and Volume Properties

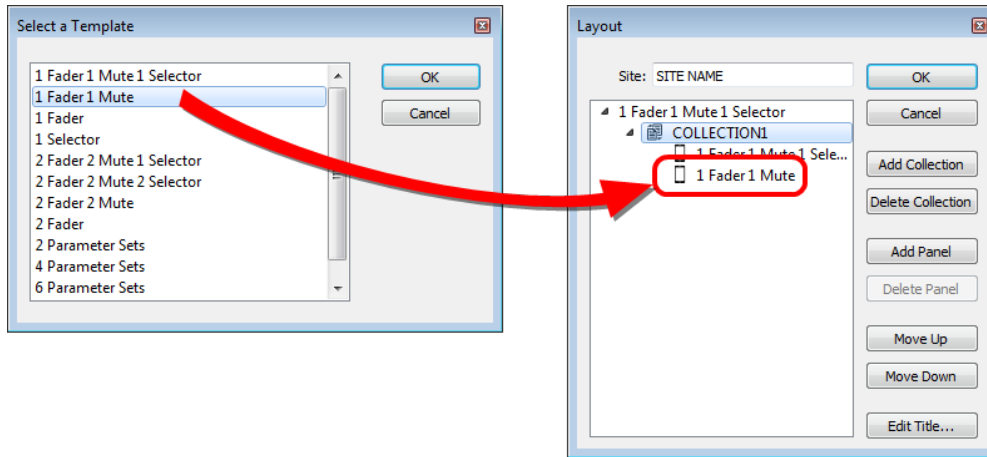
NOTE: To change the volume limits on a slider, right-click on the slider and choose properties. Checking Percent displays volume on a 0-100 scale. Unchecking Percent displays volume on a dB scale.

- To add another pane, click the **Layout** button, select **COLLECTION1** and click **Add Panel**.



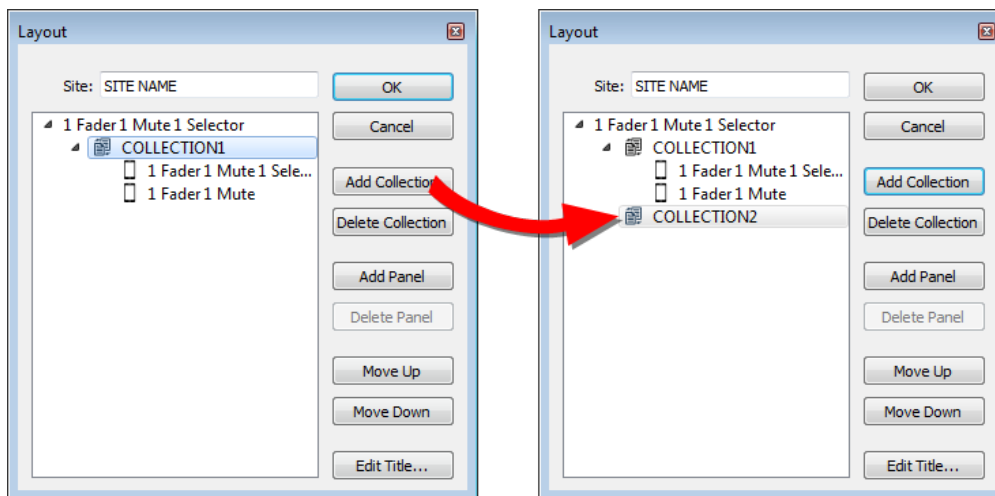
Locating the Add Panel button

7. Select a panel template and click OK. Repeat this to add as many panels as needed.

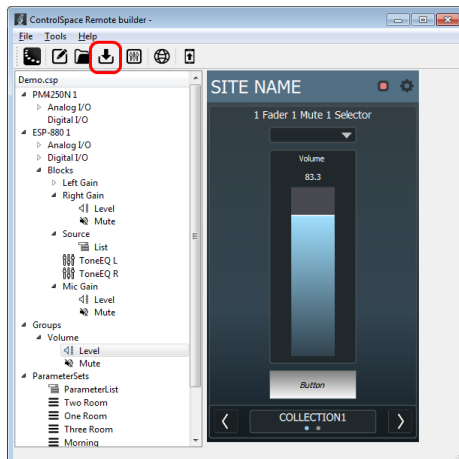


Adding a Panel Template to the Layout

8. Select **COLLECTION1** and click **Edit Title** to change the name of the collection. Click **OK** when done.
9. To add another collection, select **COLLECTION1** again and click **Add Collection**. **COLLECTION2** is added to the Layout.



10. Continue to drag-and-drop controls to build additional panels.
11. When you are done creating a panel, click **Save Remote app File**.

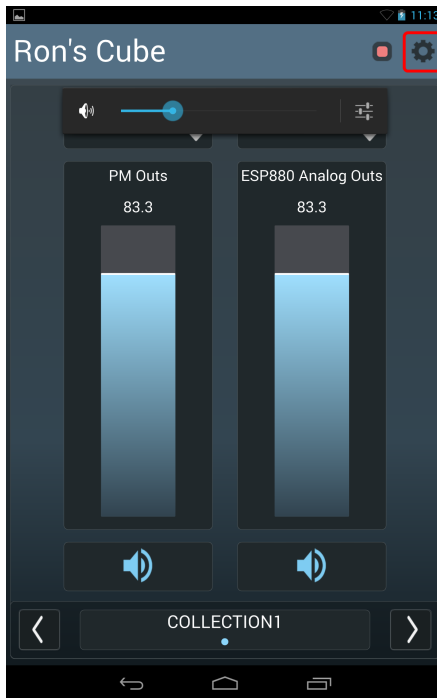


Saving Remote app File

Sending to a Mobile Device

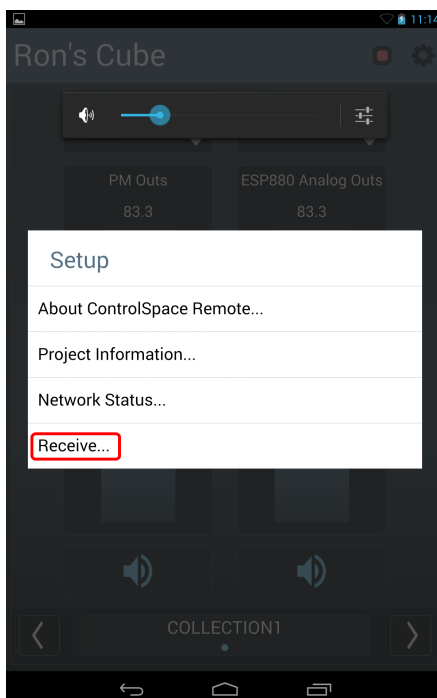
To send a panel to your mobile device, make sure your PC and mobile device are connected to the same Wi-Fi® router.

1. Launch the Remote app on your mobile device.
2. Touch the Settings icon.



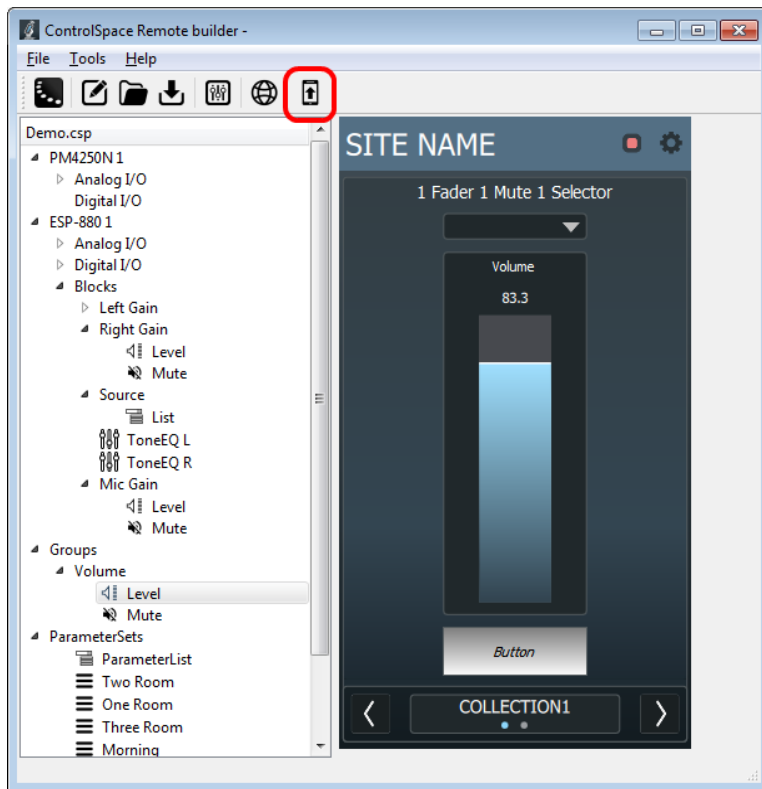
Remote App Settings icon

3. In the pop-up menu, touch **Receive**.



Selecting Receive in the Remote app

4. On your computer in the Remote builder window toolbar, click the **Send to Mobile Device** icon.



5. In the Send to Mobile Device dialog box, enter the IP address shown on the mobile device and click **OK**.



The control panel file will be transferred to the mobile device.