

TOC

Introduction	4
Product Overview	4
Bose ControlSpace Remote builder software	4
Bose ControlSpace Remote app	5
To get started	5
Remote Builder Window	6
Menus	6
File Menu	6
Edit Menu	7
Layout Menu	7
Tools Menu	8
Help Menu	8
Toolbar	8
Project/Properties Panel	9
Control Panel Canvas	9
Canvas Setup Properties	9
Layout Tool	10
File Types	11
Creating Panels Using Templates	12
Creating Control Panels	12
Sending to a Mobile Device	24
Creating Custom Panels	27
Creating Custom Layouts	27
Importing Backgrounds	27
Adding images	30
Adding Text Frames & Labels	32
Adding Frames	34
Adding Regions	36
Creating Custom Controls	38
Custom Buttons	39
Custom Sliders	40
Custom Drop Lists	42
Custom RCGroups	44
Room Combination Actions	44
Room Combination Audio Controls	49
Custom Parameter Sets	50
Custom Parameter Set Lists	52
Custom Links	54
Custom Setup Button	56

Custom Remote Connection Indicator	58
--	----

ControlSpace Remote Builder 2.1

User's Guide



Introduction

Product Overview

Bose ControlSpace Remote builder software

Bose ControlSpace Remote builder software is a graphical user interface tool used to design, test and deploy mobile control panels for the Bose ControlSpace Remote app.

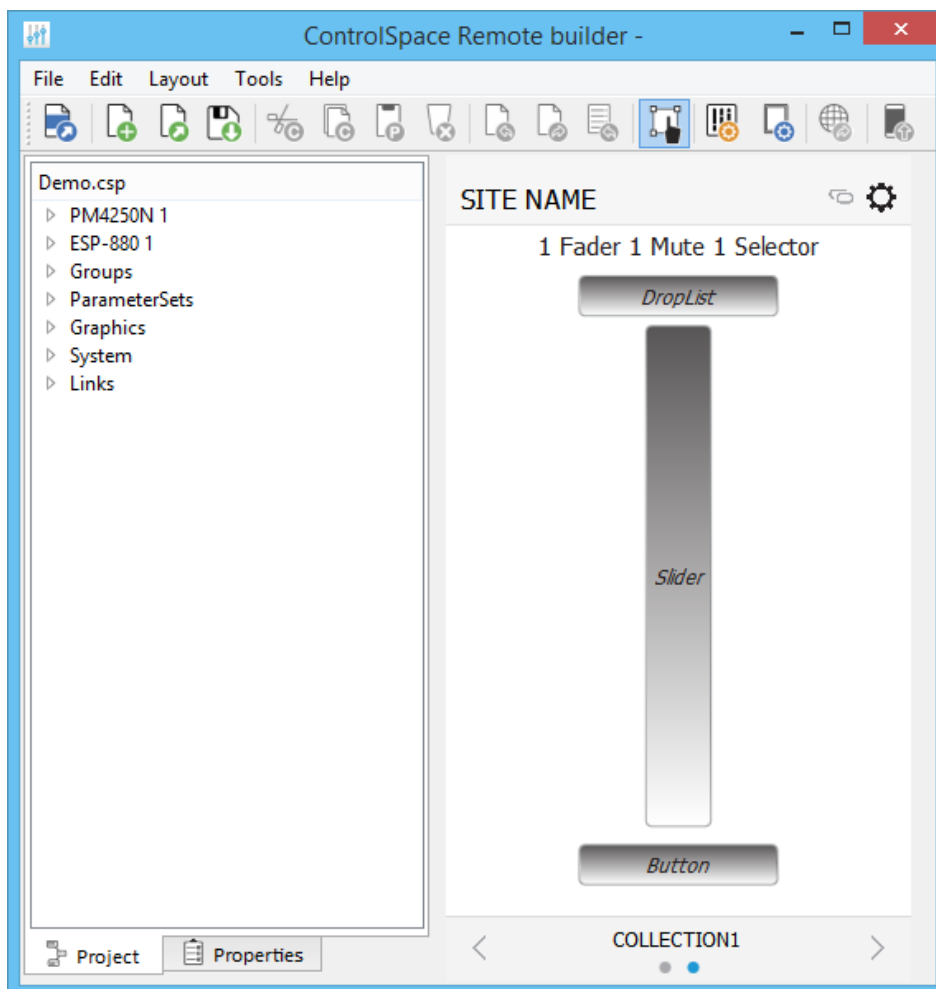
Bose ControlSpace Remote builder is used by system integrators to configure control panels that are sent to the ControlSpace Remote app. Using control panel templates from within ControlSpace Remote builder, integrators are able to quickly create unique interfaces for wireless control of Bose networked pro audio systems.

System designs created in ControlSpace Designer™ software are easily imported into ControlSpace Remote builder. Defined system control elements such as volume, mute, source selection, tone EQ, and parameter sets are assigned to end-user friendly templates. Multiple app designs – each personalized for a specific user's control needs – can be created and tested from ControlSpace Remote builder and sent wirelessly to mobile devices on the network.

You can create control panels either using the built-in templates, or using the graphical elements available in the layout mode to design customized layouts and control buttons.

For designing with templates, see [Creating Control Panels](#).

For designing customized panels, see [Creating Custom Layouts](#) and [Creating Custom Controls](#).

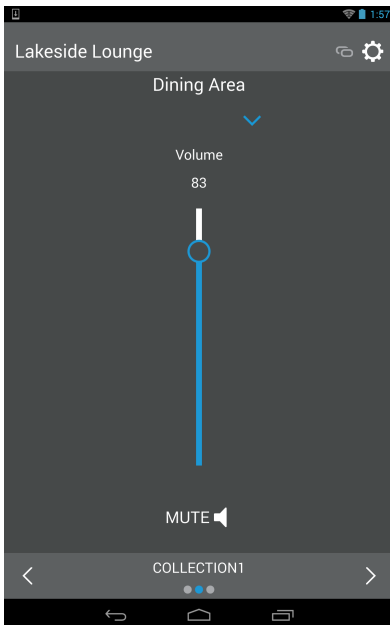


*ControlSpace Remote Builder Window Example***Bose ControlSpace Remote app**

Bose ControlSpace Remote app is a mobile device application for Android™ and iOS devices that provides wireless control of networked Bose Professional system components. Personalized for each end user's mobile device, various functions of the system can be adjusted:

- Volume levels and mute state
- Source selection
- Tone EQ settings
- Parameter set recall

ControlSpace Remote app is available as a free download on the App Store or Google Play™ store.

*ControlSpace Remote App Control Panel Example***To get started**

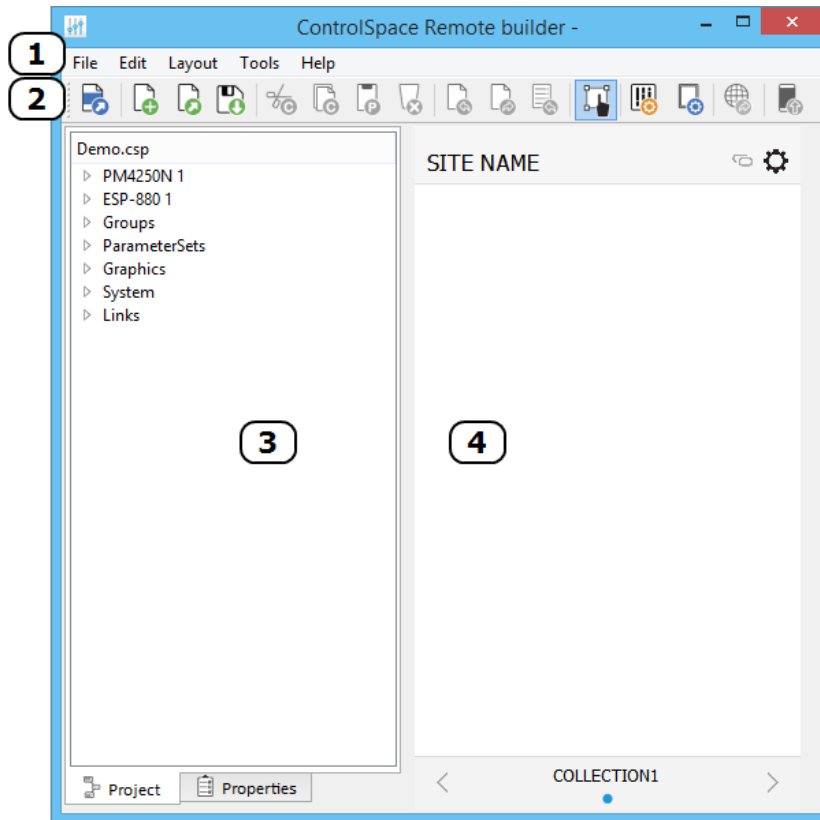
1. From pro.Bose.com, download and install the ControlSpace Remote builder desktop app to your computer.
2. From the Google Play™ or App Store, download and install the ControlSpace Remote app to your mobile device.
3. Ensure that your Android™ or iOS device is connected to the same Wi-Fi® network as your ControlSpace/PowerMatch devices.

Android and Google Play are trademarks of Google Inc.

App Store is a service mark of Apple Inc.

Wi-Fi is a registered mark of the Wi-Fi Alliance.

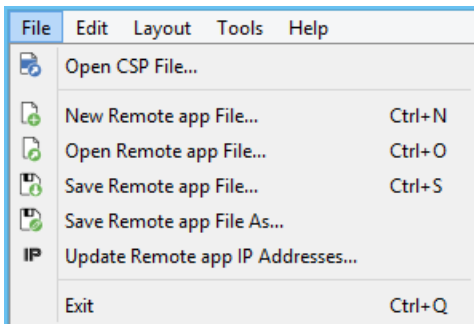
Remote Builder Window



Remote builder window elements

1 Menus

File Menu



Open CSP file... opens a window for browsing to an existing ControlSpace® Designer™ software project file.

New Remote app File... opens a window in which you can select a template or blank panel to use for building a new Remote app control panel.

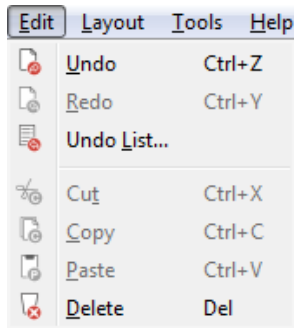
Open Remote app File... opens a window for browsing to an existing Remote app file.

Save Remote app File... initially opens a window for naming the current Remote app file and browsing to a location to save it. Subsequent selections of this menu option will immediately save changes directly to the previously selected file location.

Save Remote app File As... opens a window for renaming current Remote app file and browsing to a location to save it.

Update Remove app IP Addresses... opens a window for updating the IP addresses of each device in the open project file.

Edit Menu



Undo... erases the last change and reverts to the previous state.

Redo... reverts the effects of the undo action.

Undo List... opens the Undo/Redo window

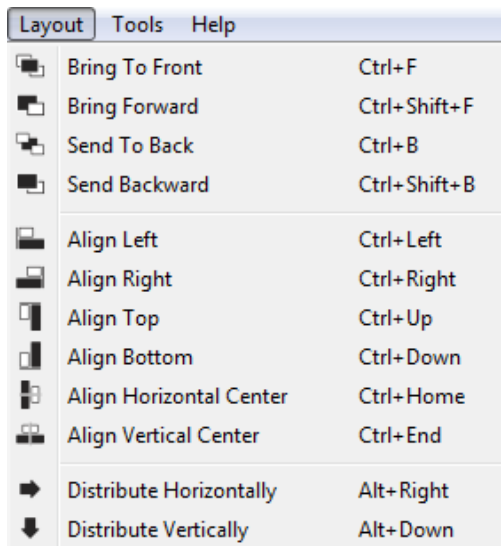
Cut... removes the selected item and copies it to the clipboard (standard Windows editing function).

Copy... copies the selected item to the clipboard (standard Windows editing function).

Paste... pastes the contents of the clipboard (standard Windows editing function).

Delete... removes the selected item.

Layout Menu



Bring to Front... moves the selected object to the top layer.

Bring Forward... moves the selected object one layer toward the top.

Send to Back... moves the selected object to the bottom layer.

Send Backward... moves the selected object one layer toward the bottom.

Align Left... aligns selected objects relative to their left edges.

Align Right... aligns selected objects relative to their right edges.

Align Top... aligns selected objects relative to their top edges.

Align Bottom... aligns selected objects relative to their bottom edges.

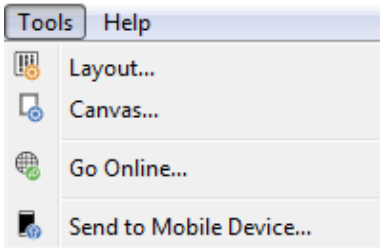
Align Horizontal Center... aligns selected objects relative to their horizontal centers.

Align Vertical Center... aligns selected objects relative to their vertical centers.

Distribute Horizontally... distributes selected objects evenly along the horizontal axis

Distribute Vertically... distributes selected objects evenly along the vertical axis

Tools Menu



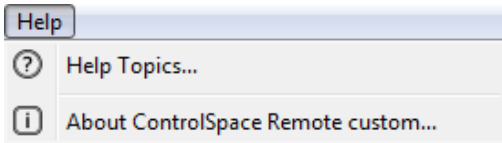
Layout... opens the Layout dialog which allows you to add/delete collections and panels.

Canvas... opens the canvas setup dialog.

Go Online... connects to a ControlSpace network.

Send to Mobile Device... transmits the control panel file to a mobile device.








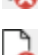

Help Menu










Help Topics... Opens online Help.

About ControlSpace Remote builder... opens a dialog which reveals the software version number.

2 Toolbar

-  Open CSP file - Opens a window for browsing to an existing ControlSpace® Designer™ software project file
-  New Remote app file - Opens a window in which you can select a template or blank panel to use for building a new Remote app control panel
-  Open Remote app file - Opens a window for browsing to an existing Remote app file
-  Save Remote app file - Initially opens a window for naming the current Remote app file and browsing to a location to save it. Subsequent selections of this tool will immediately save changes directly to the previously selected file location
-  Cut
-  Copy
-  Paste
-  Delete
-  Undo

-  Redo
-  Opens Undo list window
-  Enables/disables Edit mode
-  Opens **Layout Tool**
-  Opens **Canvas Setup Properties**
-  Go Online
-  Sends file to mobile device

3 Project/Properties Panel

Selecting the **Project** tab displays a tree view of devices and controls in the opened project file. Selecting the **Properties** tab displays properties for a selected object on the canvas.

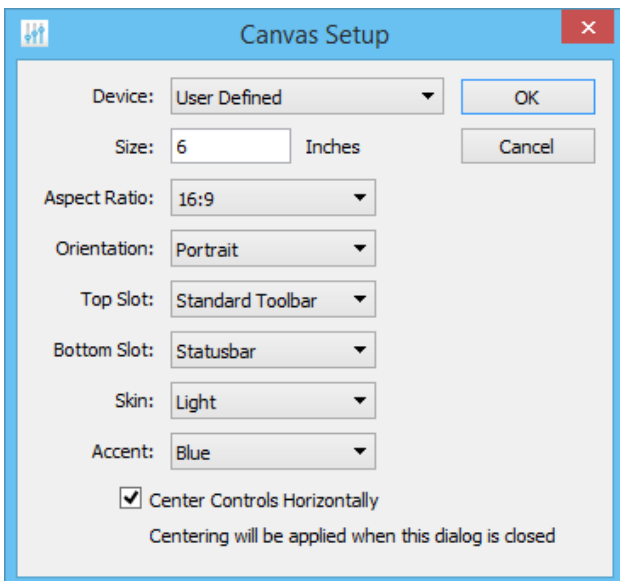
4 Control Panel Canvas

This canvas is the workspace for creating control panels. The size, shape, orientation, and other properties of the Canvas is set using the Canvas Setup properties tool in the toolbar.

See **Canvas Setup Properties** for more details.

Canvas Setup Properties

The Canvas Setup window allows you to define the size and features of the control panel you are creating.



The **Canvas Setup** includes the following properties:

Device – Determines the canvas Size and Aspect Ratio for the selected device.

NOTE: Size and Aspect Ratio can only be adjusted manually when "User Defined" is selected as the device.

Size – Diagonal screen dimension of the selected device.

Aspect Ratio – The proportional relationship between the width and height of the screen on the selected device.

Orientation – Changes the orientation of the screen between portrait and landscape.

Top Slot/Bottom Slot – Places the Standard Toolbar, Minimum Toolbar, Statusbar, or no toolbar (None) in the top/bottom border of the Canvas.

Standard Toolbar: The left-hand end of the toolbar has a field for naming the site where the panel will be used. The SITE NAME is entered using the Layout setup window. The right-hand end of the toolbar includes an Online/Offline link indicator and a setup information button.



Minimum Toolbar: The Minimum Toolbar only has the Online/Offline link indicator and the setup information button.



Statusbar: The Statusbar indicates which collection of panels has been selected. The dots indicate how many panels are in the collection (there is always one blank panel). Click the left/right arrows to view other panels – the highlighted dot will move left/right accordingly. Click on "COLLECTION" to open a list of panel collections and select a different one.



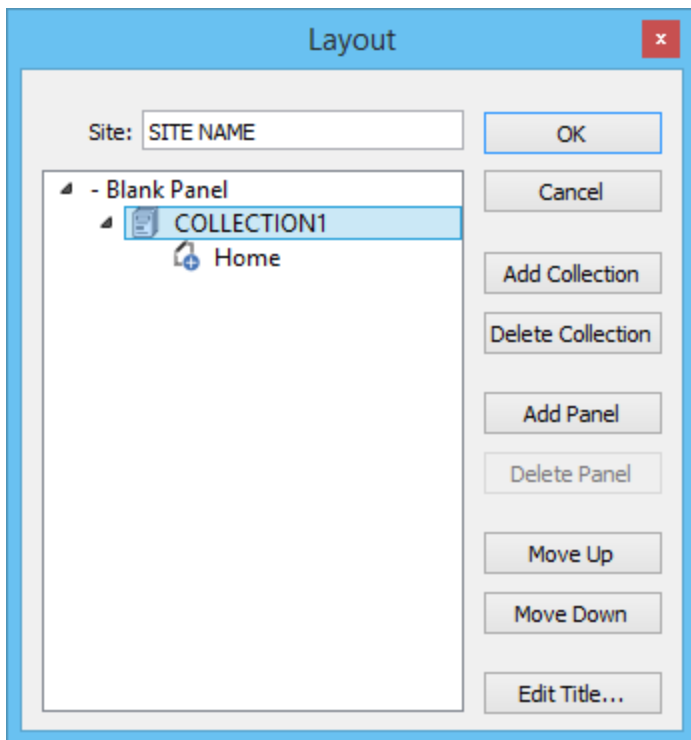
Skin – Selects a Light or Dark Skin for the panel.

Accent – Selects an accent color (Black, Blue, Green, Pink, Red, or Yellow) for the controls dragged into the panel.

Center Controls Horizontally – When checked, centers controls in the workspace. Applies only when creating custom control panels.

Layout Tool

The Layout tool manages the collections and control panels being created in ControlSpace® Remote builder software. Initially, the Layout tool always provides one collection (COLLECTION1) with one blank panel (Home). For creating custom layouts you can add additional blank panels from the template list.



Initial Layout tool content

The Layout tool provides the following control buttons:

OK – Stores changes made and closes the tool.

Cancel – Closes the tool without making any changes.

Add Collection – Adds another collection to the list.

Delete Collection – Removes the selected collection from the list.

Add Panel – Adds another control panel to the list

Delete Panel – Removes the selected control panel from the list

Move Up – Moves the selected item up one line in the list.

Move Down – Moves the selected item down one line in the list.

Edit Title – Allows changing the title of the selected collection or control panel.

File Types

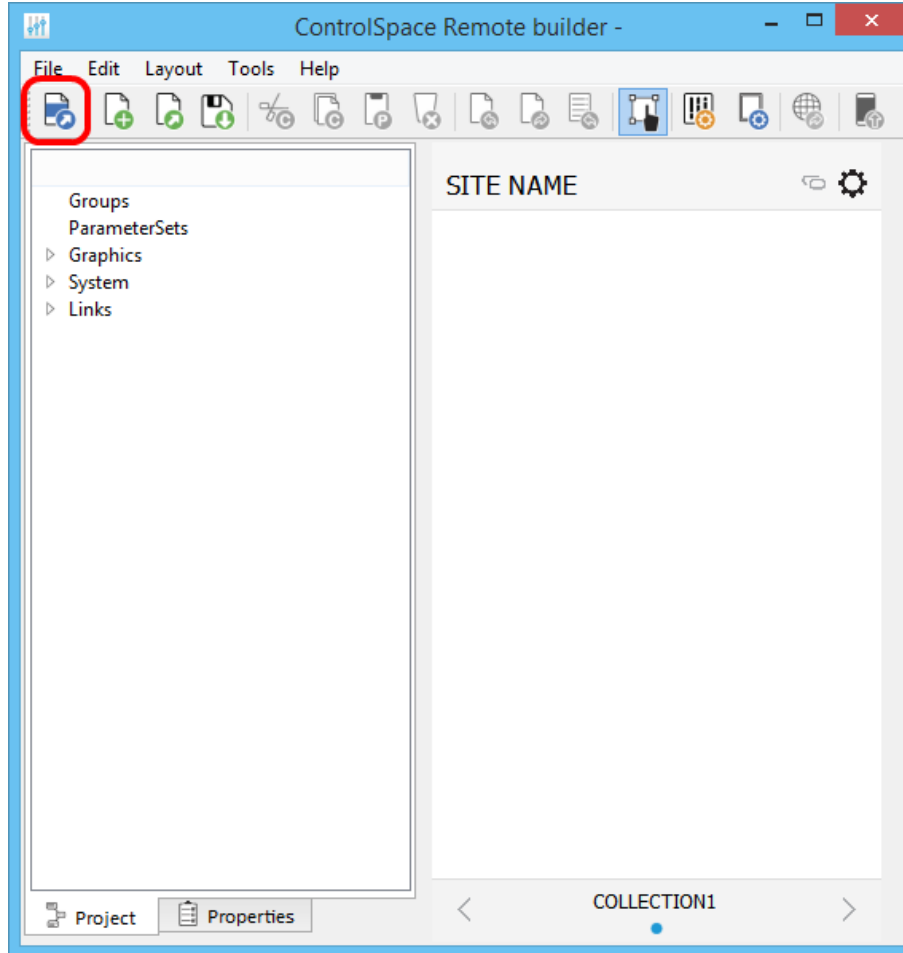
This application is compatible with the following file types.

File Type	Description
.csp	ControlSpace Designer project file.
.cpf	Custom control panel file.
.cpz	A packaged file that includes data from a control panel file (.cpf) and its associated ControlSpace Designer project file (.csp).

Creating Panels Using Templates

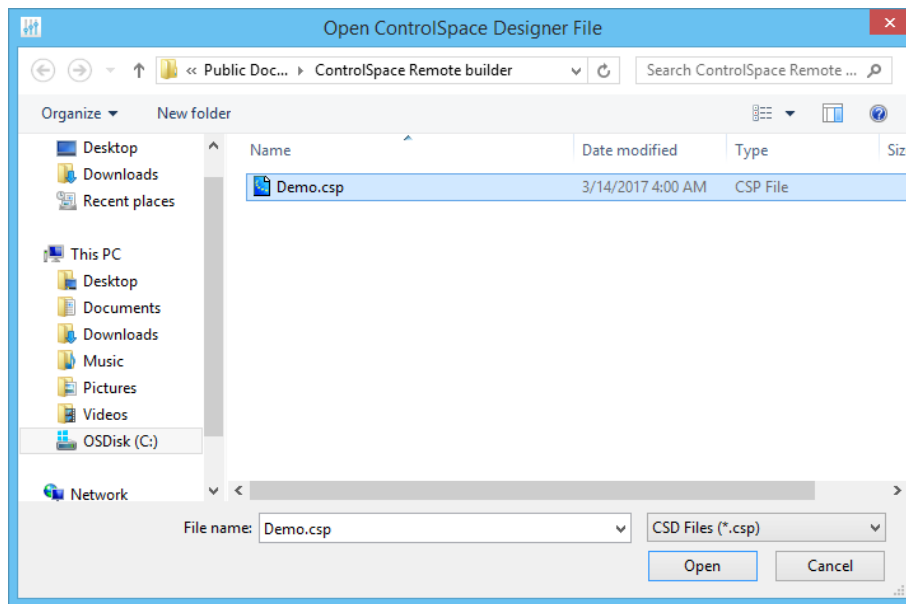
Creating Control Panels

1. Open the Remote builder app on your computer using the desktop icon.
2. In the Remote builder Window, click the **Open CSP File** tool.



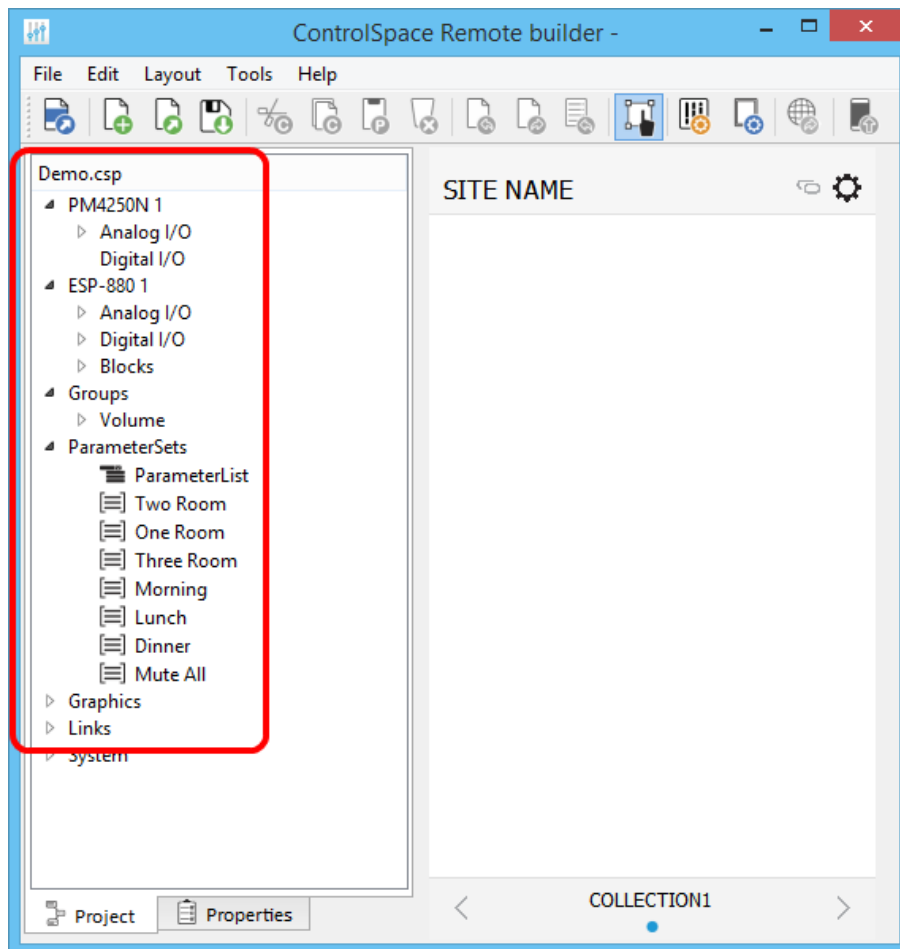
Open CSP File tool

3. From the dialog window, select the ControlSpace Designer project file you created and click **Open**.



Selecting a Project File

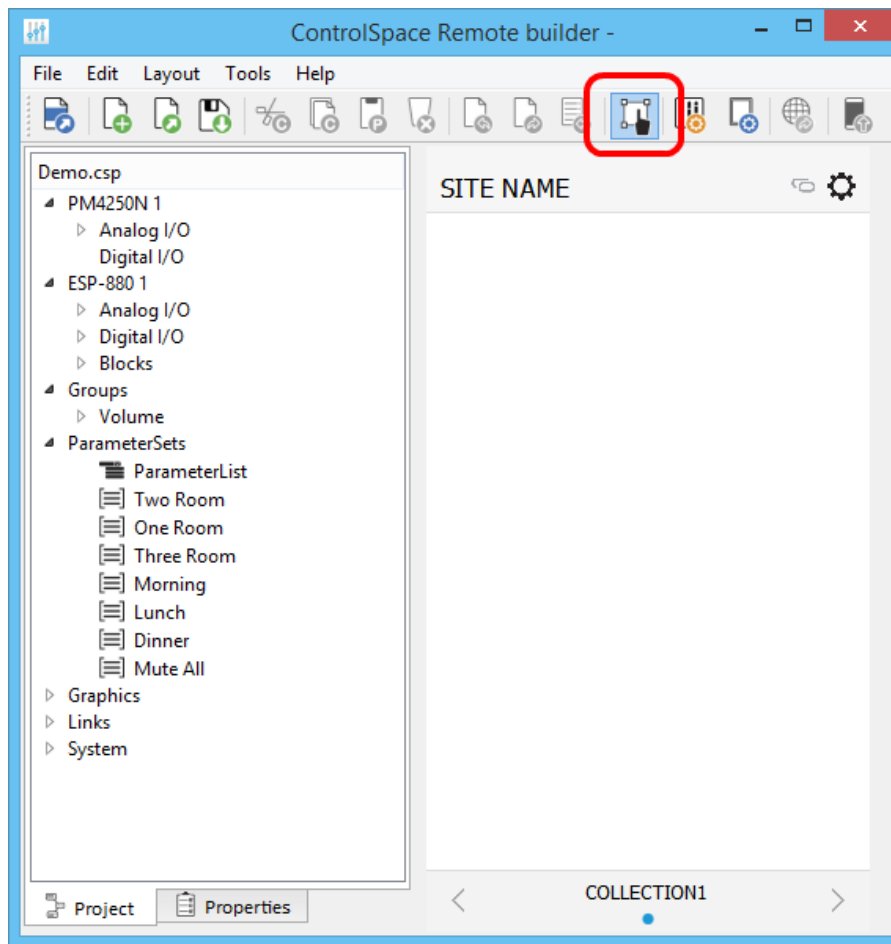
4. Check that all the devices and controls in that project are listed in the window.



Project File Devices and Controls

5. Before you start creating a control panel, make sure the **Edit** mode is selected.

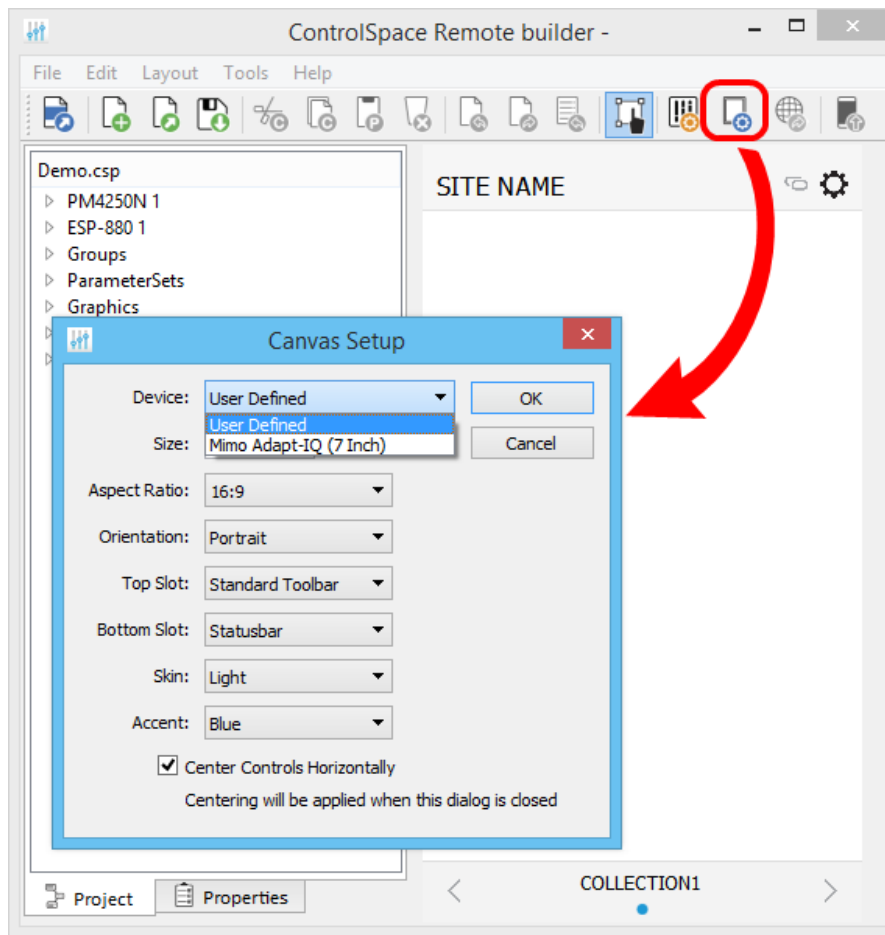
NOTE: The Edit mode must be enabled in order to create a control panel.



Edit Mode Selected

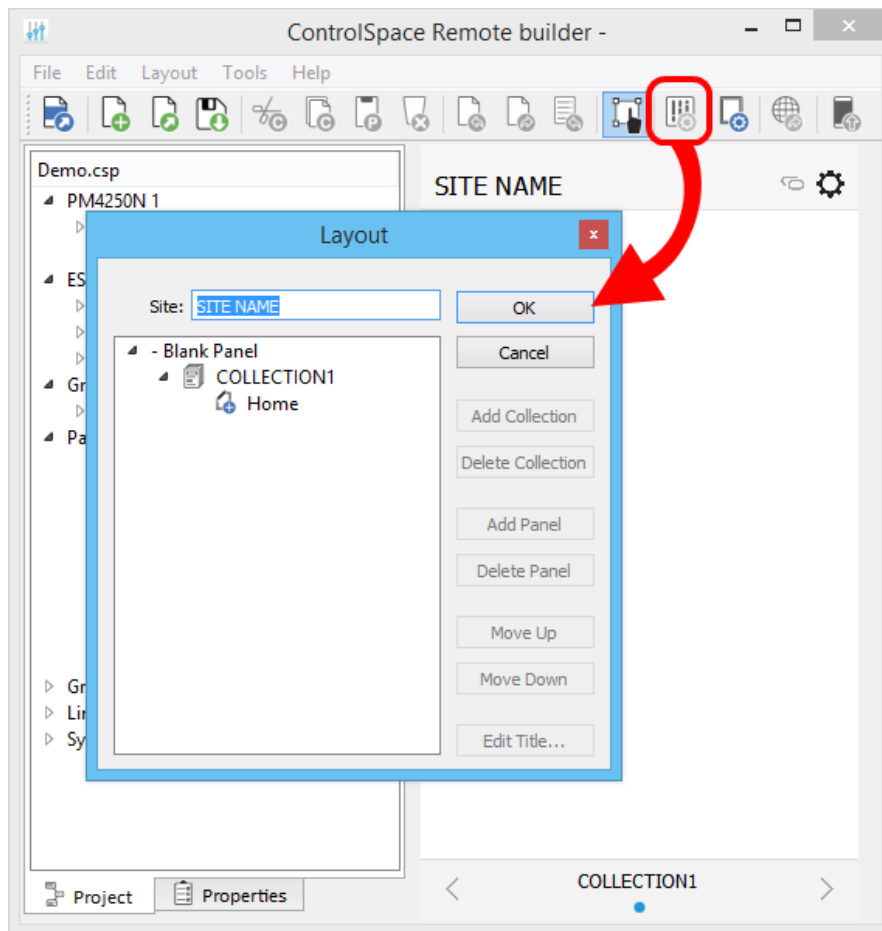
6. In the toolbar, click the **Canvas Setup** tool. Make your selections and click **OK**.

NOTE: See ["Canvas Setup Properties" on page 9](#) for more information.



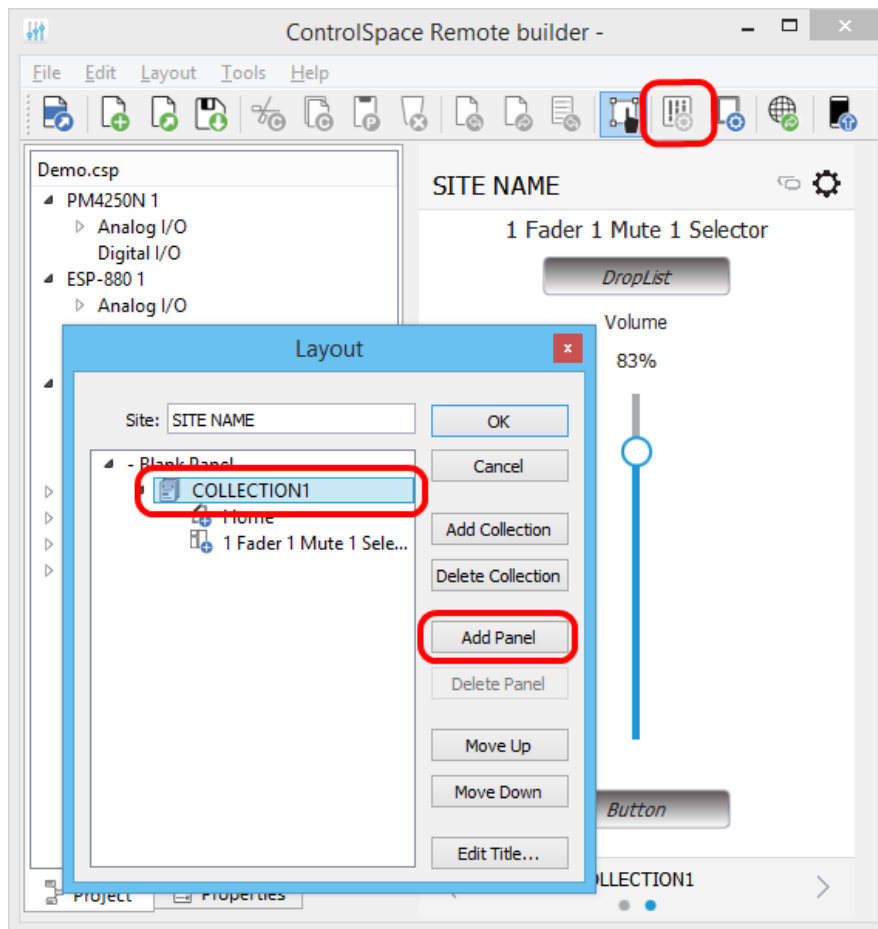
Selecting canvas size for your device

7. In the toolbar, click the **Layout** tool.

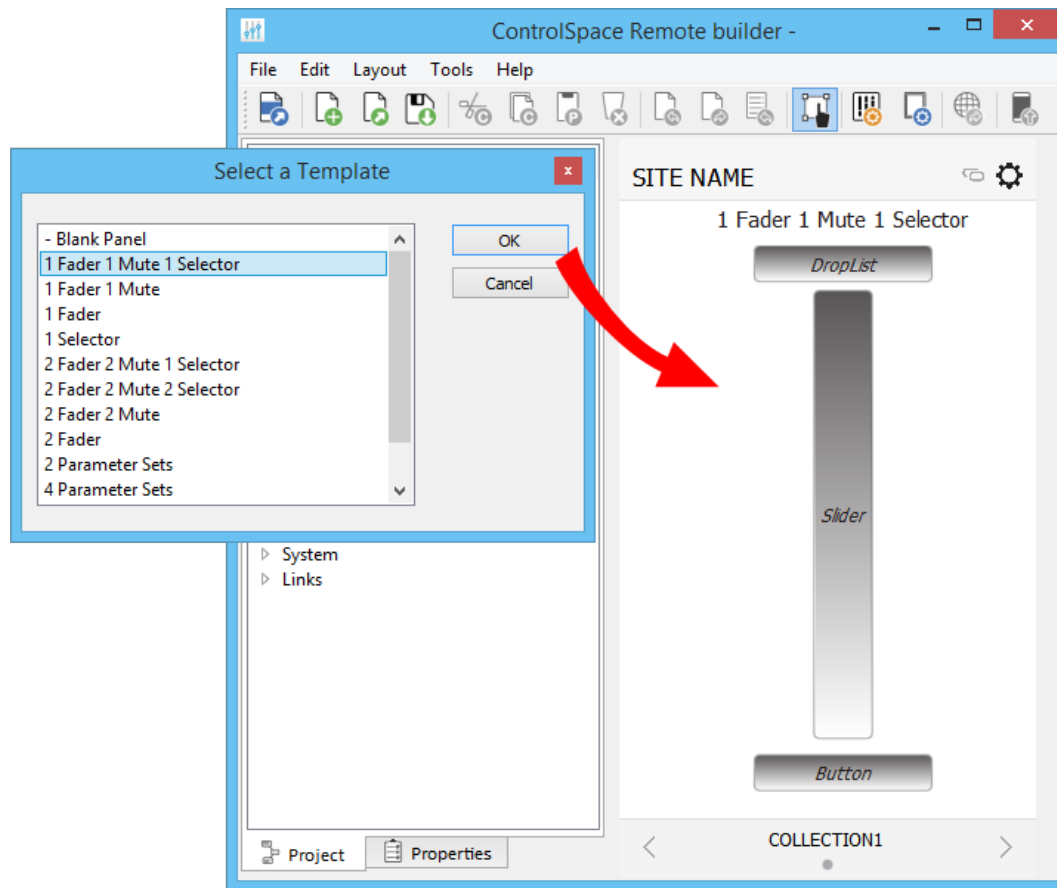


Clicking the Layout tool

8. Using the Layout window, add a template to the workspace. For example, click **Home** below **COLLECTION1**. Click **Add Panel**, select a template and click **OK**.



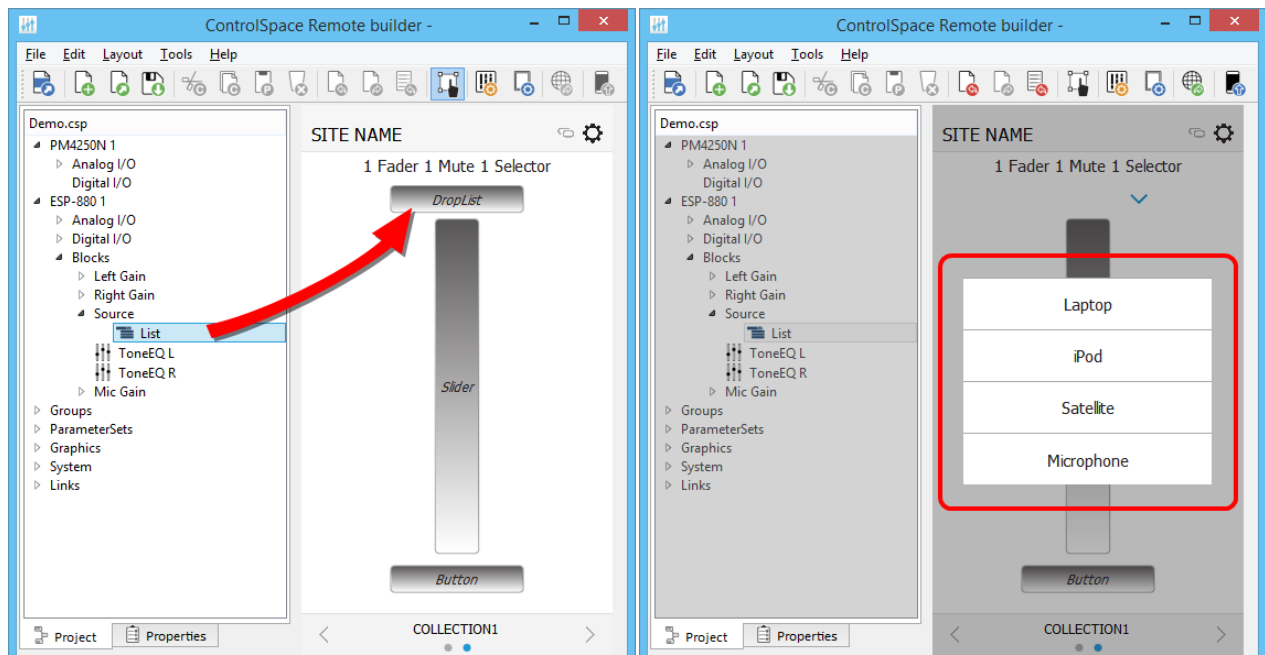
Selecting a control panel template

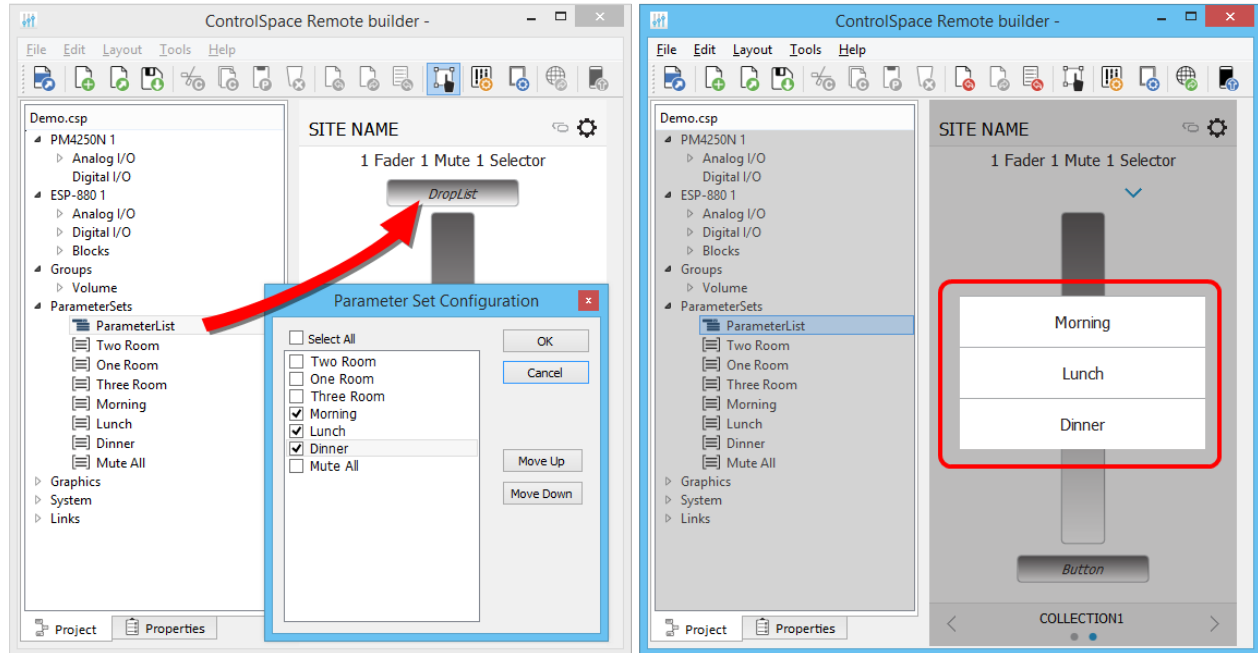
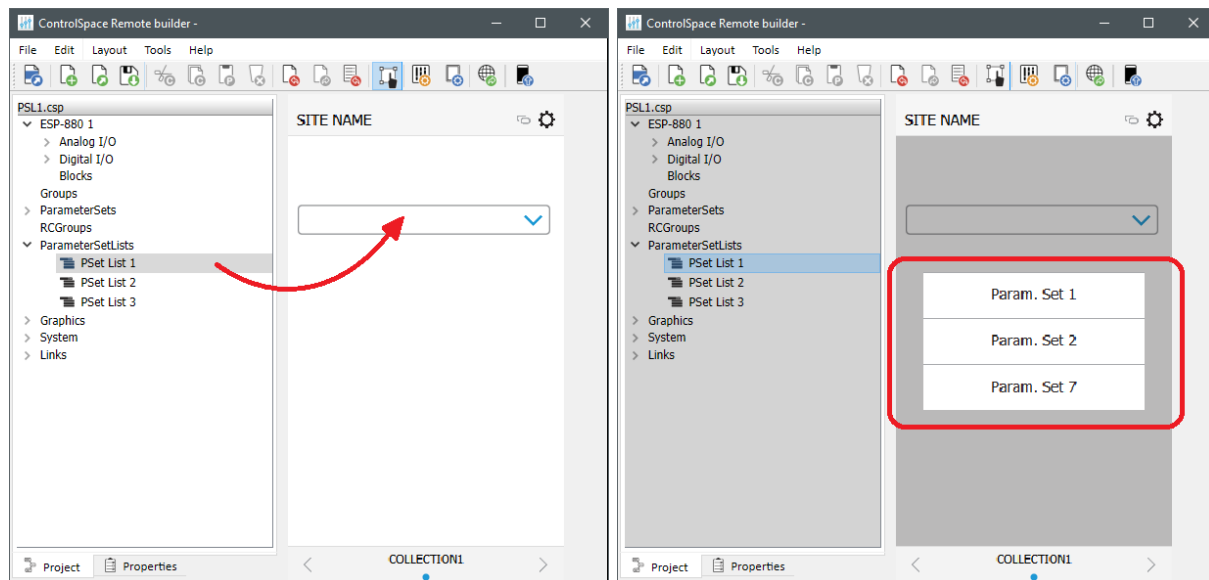


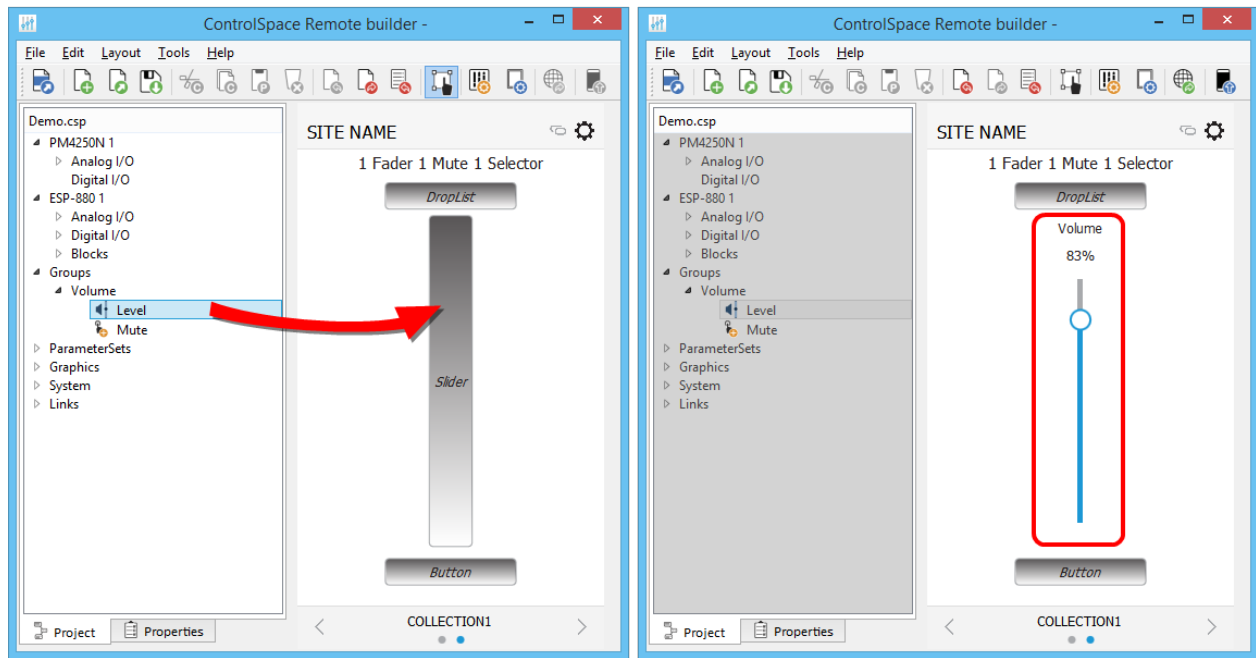
Placing the template in the workspace

9. Drag controls to the pre-defined locations on the control panel template. See the following examples.

NOTE: To verify the operation of any control panel feature such as a slider or drop list, be sure to disable the Edit mode.

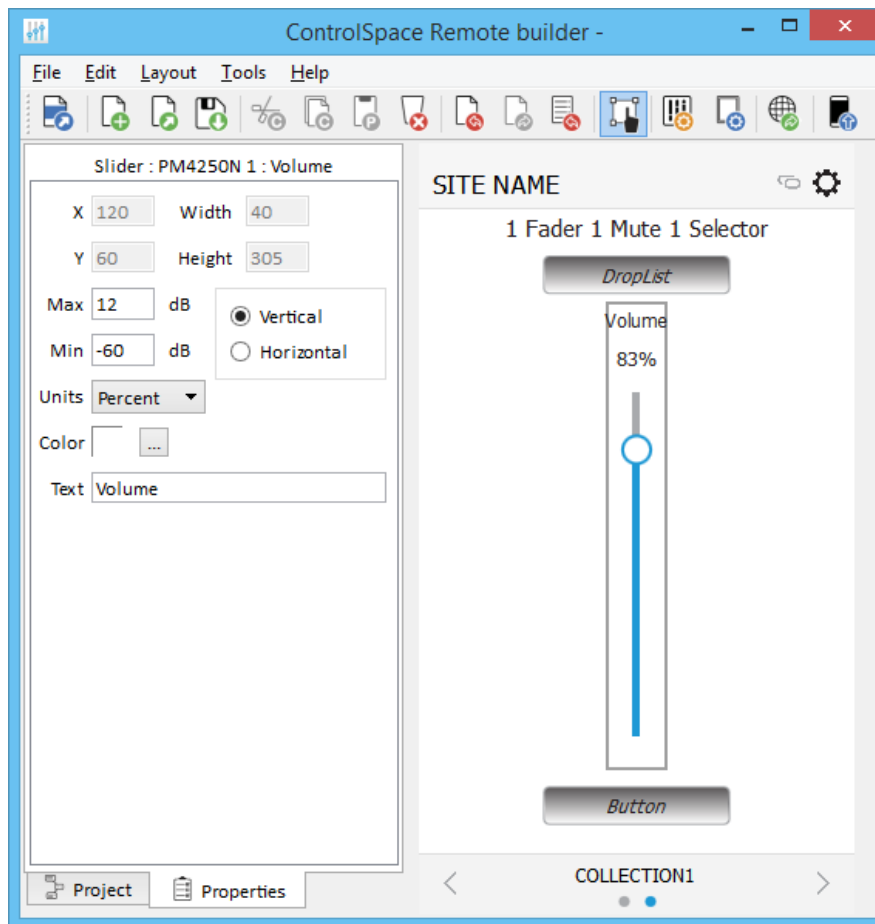


Dragging a Source list to the Drop List*Dragging a list of Parameter Sets to the Drop List**Dragging a Parameter Set List to the Drop List*



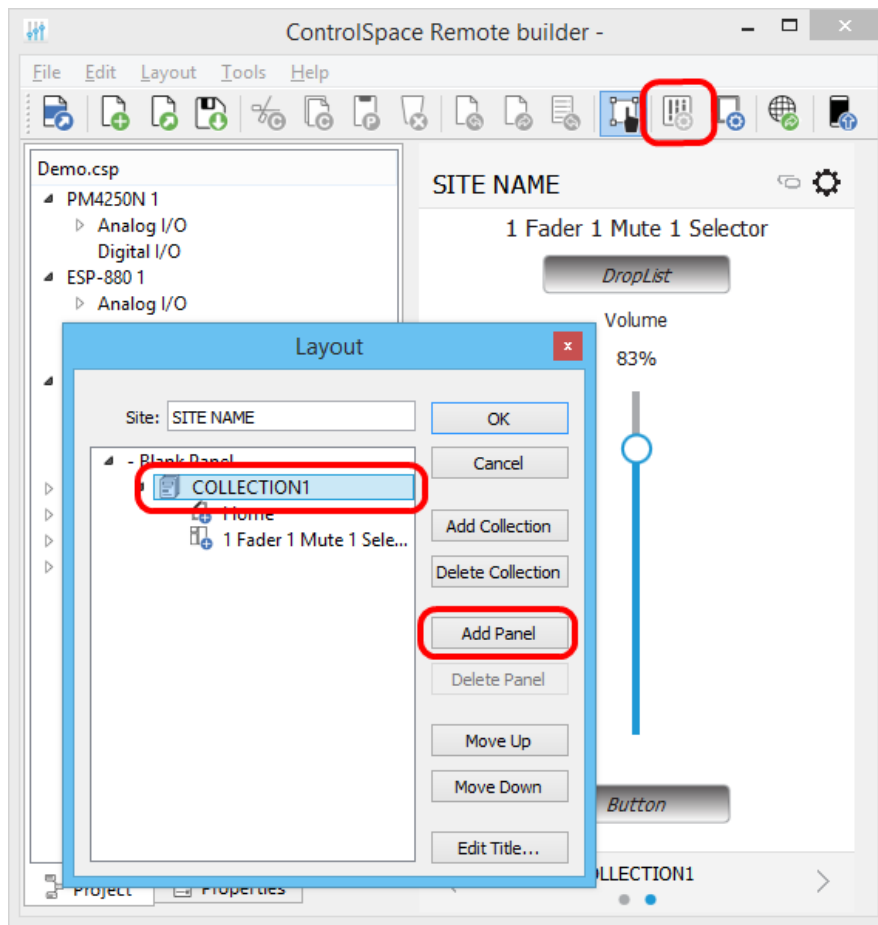
Dragging the group volume gain to the slider

To change volume limits on a slider, select the slider and click the properties tab. In this pane you can set the maximum and minimum limits and select Percent or dB for units.



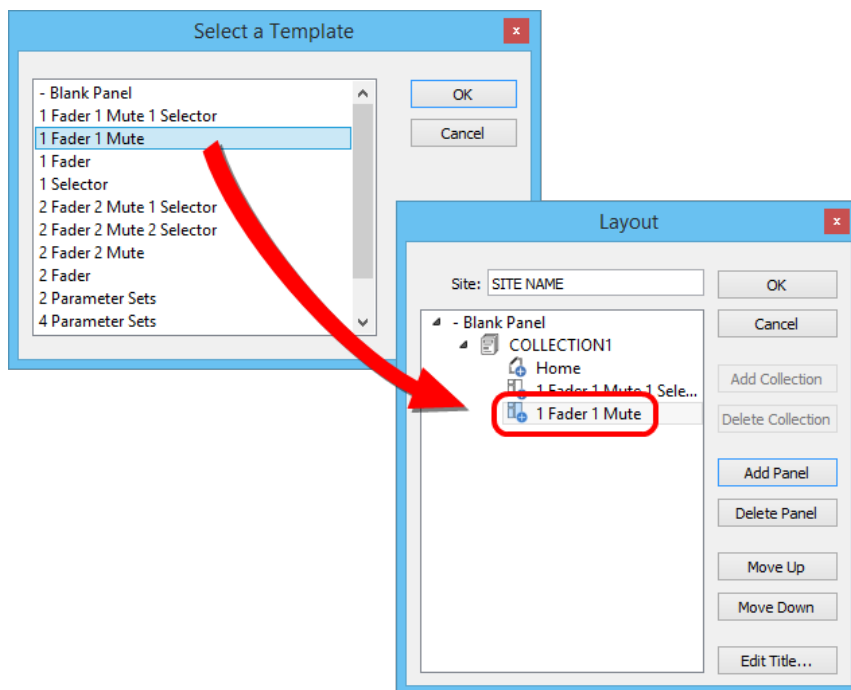
Volume Properties

10. To add another panel, click the **Layout** button, select **COLLECTION1** and click **Add Panel**.

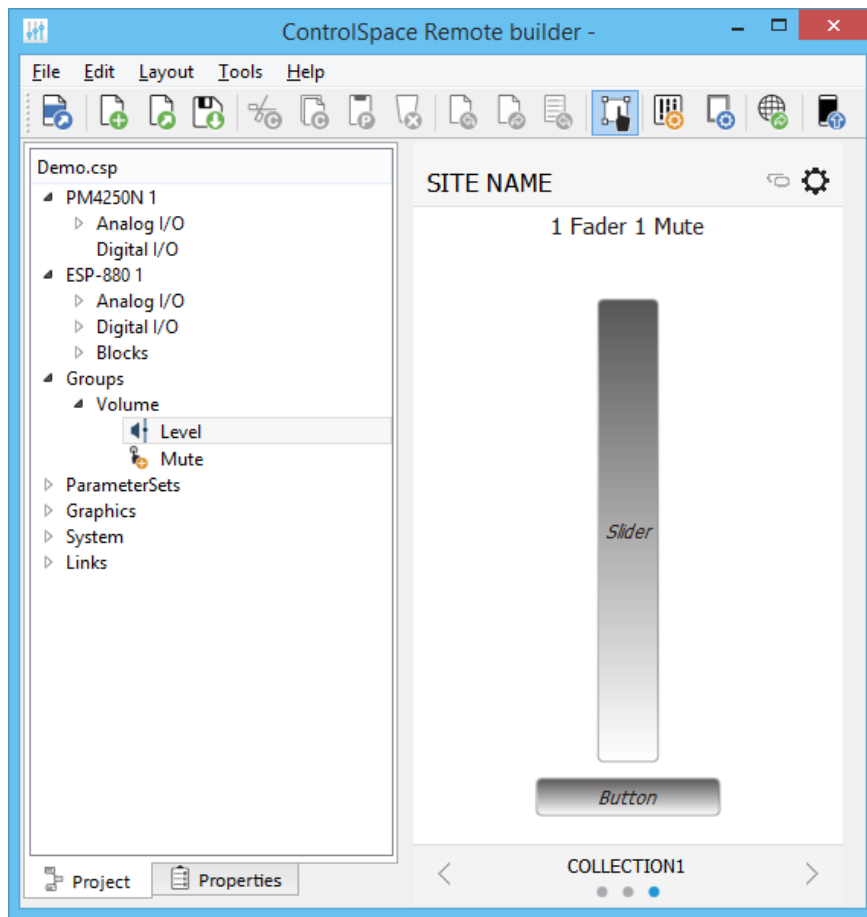


Locating the Add Panel button

11. Select a panel template and click **OK**. Repeat this to add as many panels as needed. Click the left and right arrows in the Status bar to scroll through the panels.

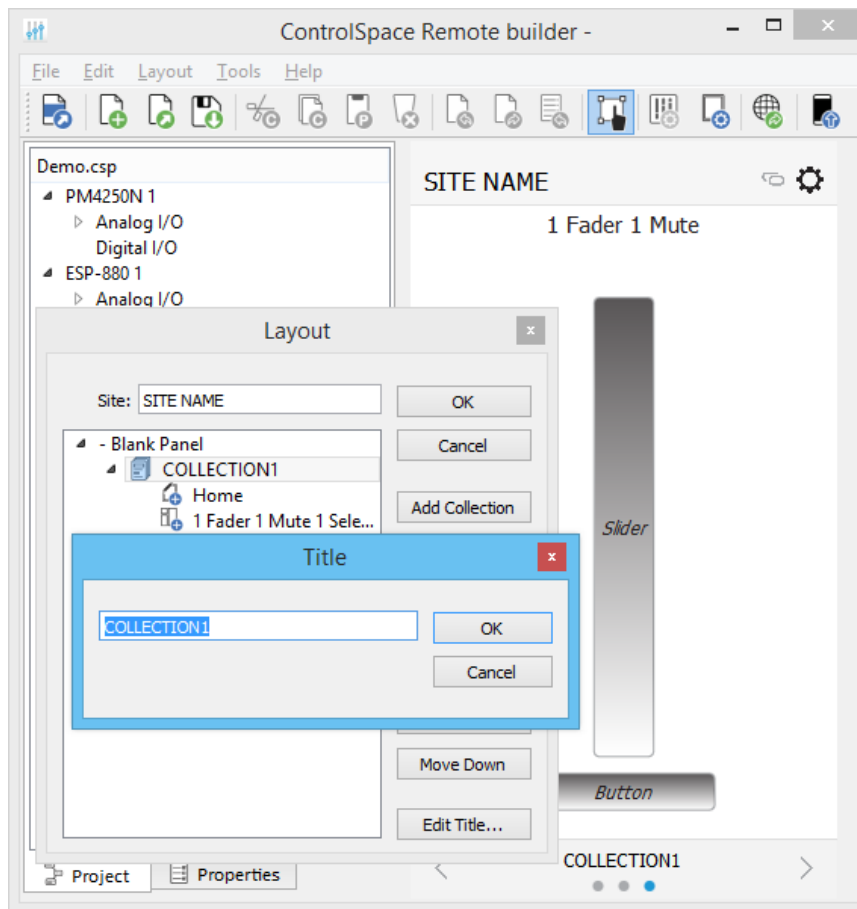


Adding another panel template to the Layout



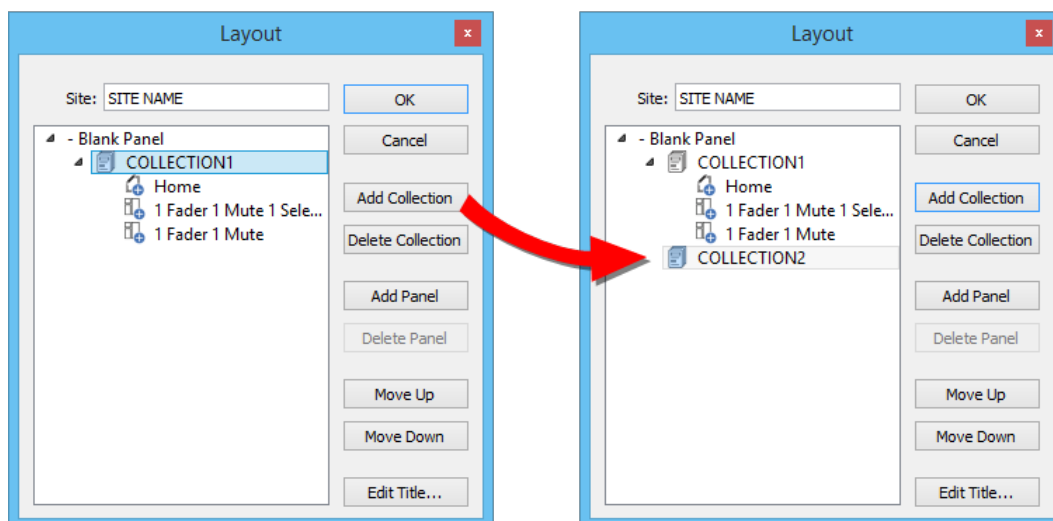
COLLECTION1 with one blank panel and two templates

NOTE: To change the **COLLECTION** Name, select **COLLECTION1** and click **Edit Title**. Enter the new name and click **OK**.

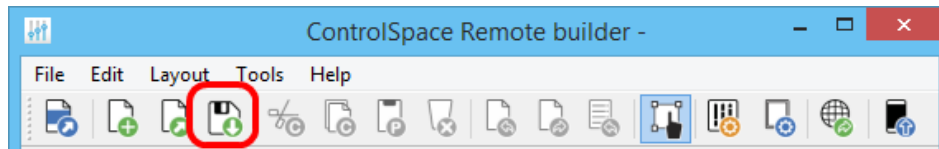


Changing Name of COLLECTION1.

12. To add another collection, select **COLLECTION1** again and click **Add Collection**. **COLLECTION2** is added to the Layout.



13. To create more panels, add more templates or blank panels and drag-and-drop controls to them.
 14. When you are done, click **Save Remote app File**.

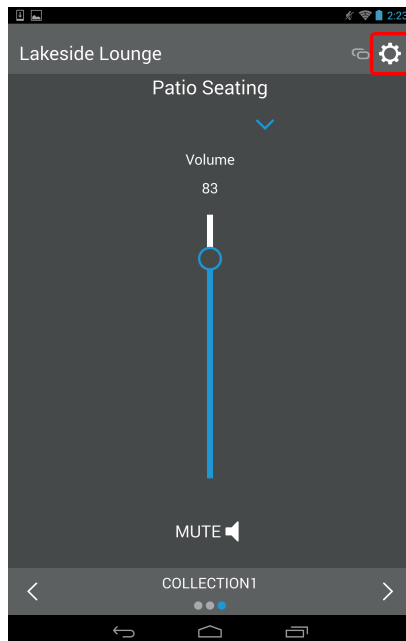


Save Remote app File button

Sending to a Mobile Device

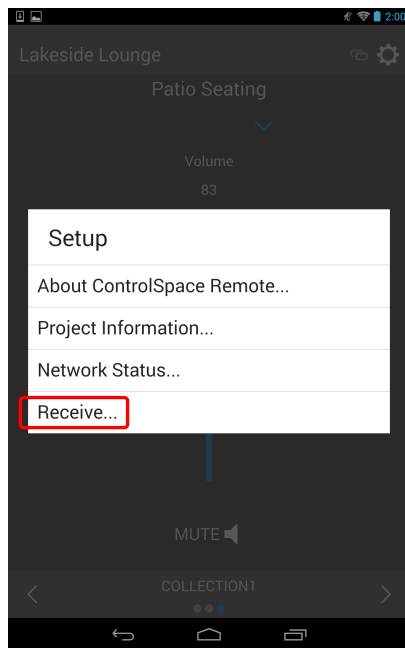
To send a panel to your mobile device, make sure your PC and mobile device are connected to the same Wi-Fi® router.

1. Launch the Remote app on your mobile device.
2. Touch the **Settings** icon.



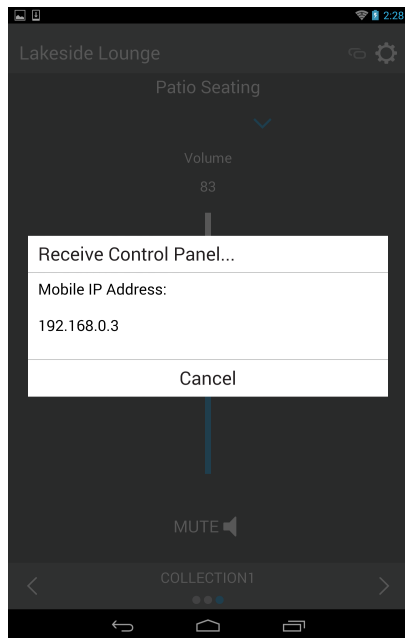
Remote App Settings icon

3. In the pop-up menu, touch **Receive**.



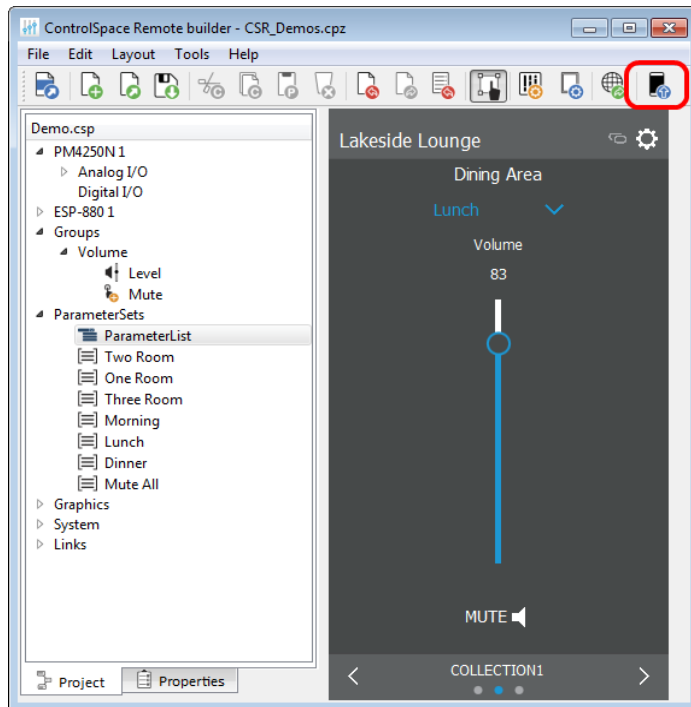
Selecting Receive in the Remote app

The Receive Control Panel dialog appears and reveals the IP address used in Step 5.

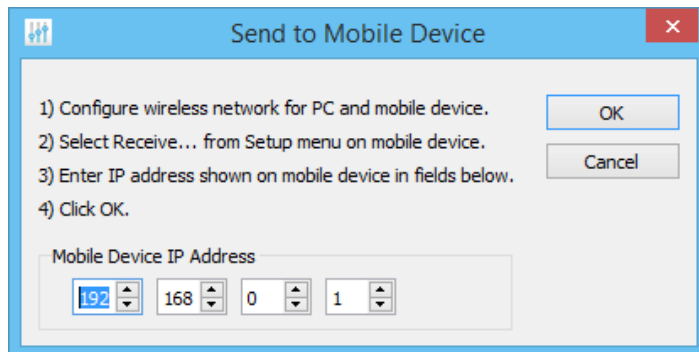


Receive Control Panel Dialog

4. On your computer in the Remote builder window toolbar, click the **Send to Mobile Device** icon.



5. In the **Send to Mobile Device** dialog box, enter the IP address shown in the Receive Control Panel dialog on the mobile device and click **OK**.



The control panel file will be transferred to the mobile device.

Creating Custom Panels

Creating Custom Layouts

Using the tools and options available in ControlSpace Remote builder you can create your own customized control panels. From the Project tab you can combine labels, images, frames, and regions to create a customized layout. The Layout menu functions can help you position the objects you placed on the canvas.

Learn about the following customizations below:

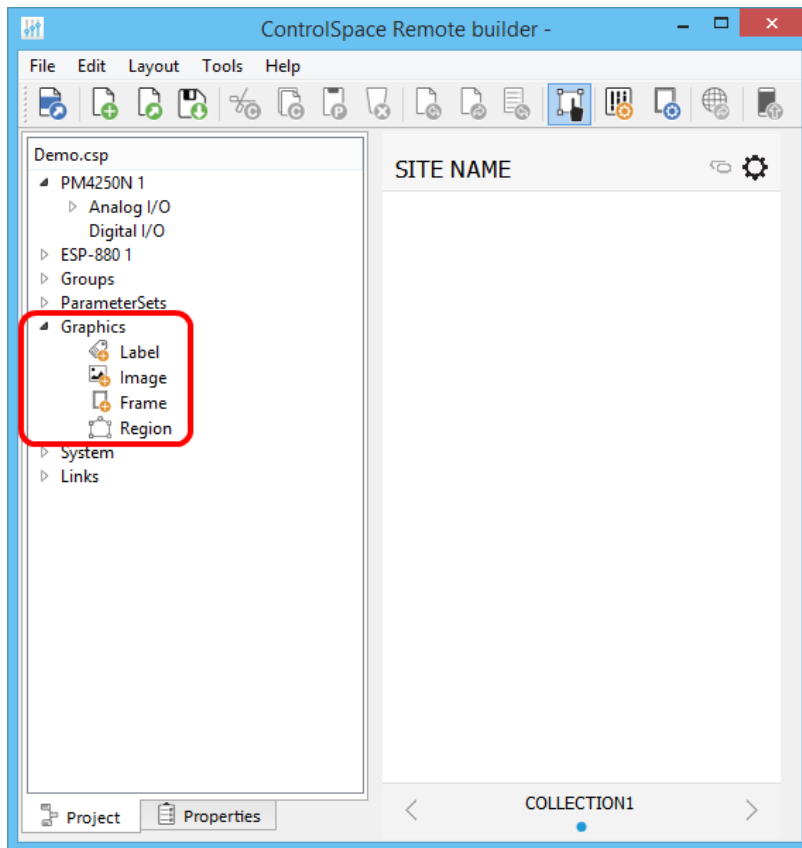
[Importing Backgrounds](#)

[Adding Images](#)

[Adding Text Frames & Labels](#)

[Adding Frames](#)

[Adding Regions](#)



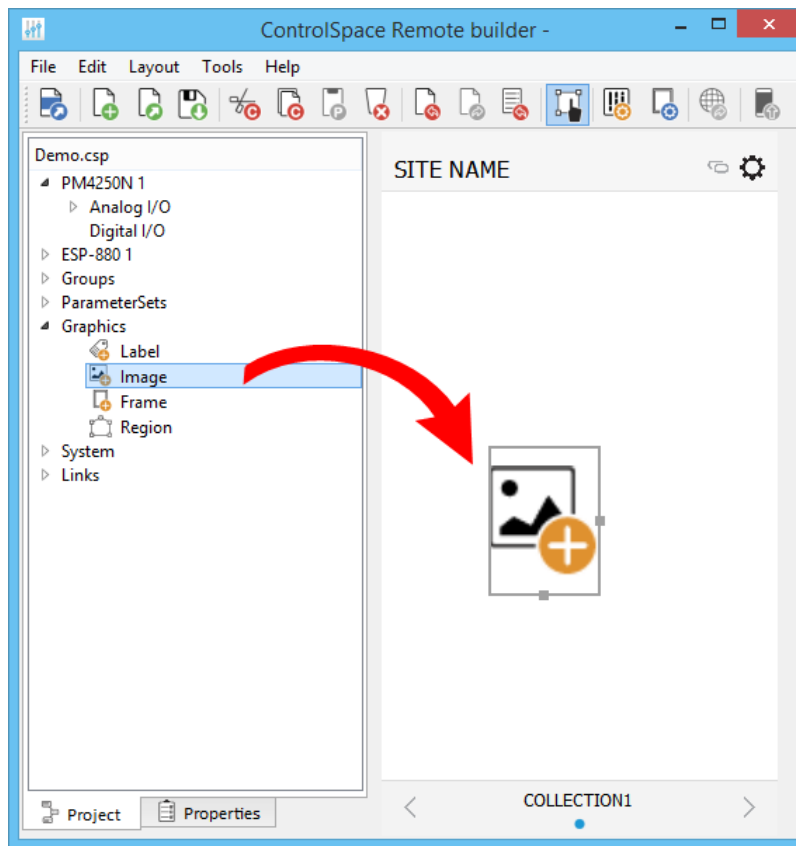
Locating Graphics

Importing Backgrounds

Placing map, floor plan, or other graphic of a venue in the workspace.

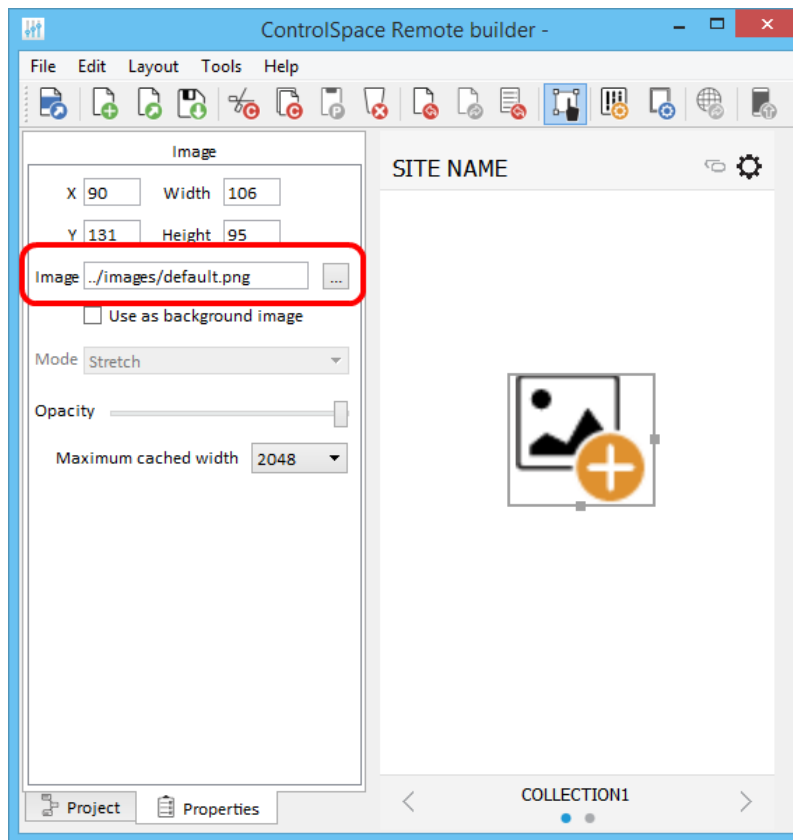
To place a floor plan or map on the canvas:

1. In the **Project** tab, expand the **Graphics** group.
2. Drag the **Image** icon into the canvas.



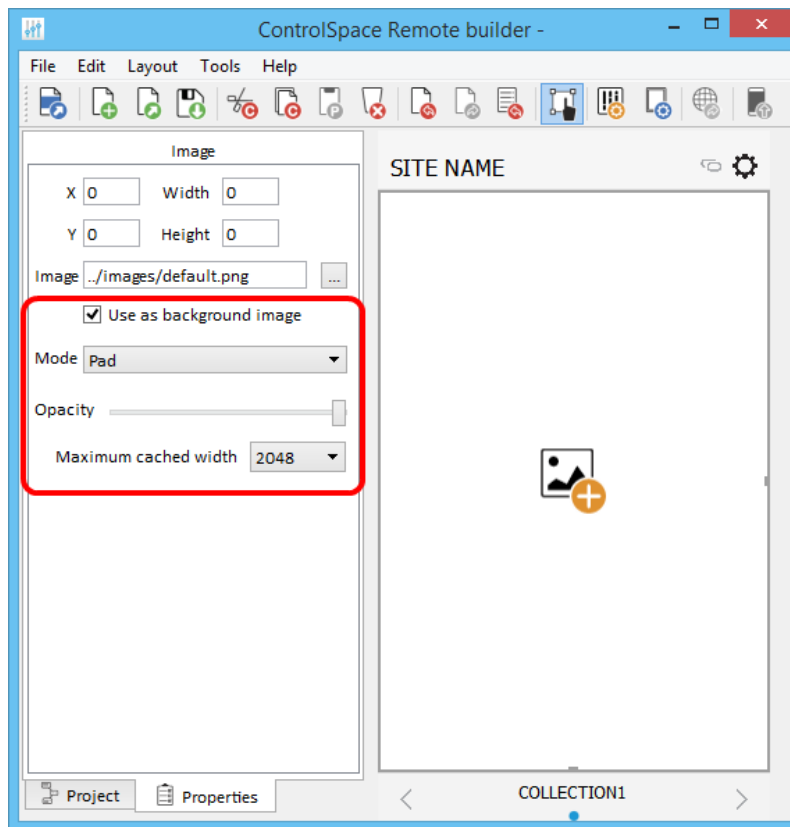
Dragging Image icon into the Canvas

3. In the canvas, double click the **Image** icon. The **Properties** tab will automatically be selected.
4. In the **Properties** tab, navigate to the file you want to import from your computer and click **Open**. The file will appear on the canvas.



Searching for an Image

5. Re-size the image by dragging the handles on the right side and bottom of the image frame. Alternatively, set the image as a background image by clicking "Use as background image" and adjusting the available parameters.



Mode - Specify how to adjust the background image size with respect to the canvas. Options include:

Stretch: Fits the width and height of the image to match the canvas size. This option does not preserve the aspect ratio of the original image.

Preserve aspect and fit: Fits the larger image dimension to the canvas size, while preserving the aspect ratio of the original image.

Preserve aspect and crop: Fits the smaller image dimension to the canvas size, while preserving the aspect ratio of the original image.

Tile: Repeats the image horizontally and vertically to fill the canvas. This option preserves the size and aspect ratio of the original image.

Tile Horizontally: Fits the image height to the canvas size, then repeats the image horizontally to fill the canvas. This option does not preserve the aspect ratio of the original image.

Tile Vertically: Fits the image width to the canvas size, then repeats the image vertically to fill the canvas. This option does not preserve the aspect ratio of the original image.

Pad: Centers the image on the canvas. This option preserves the aspect ratio of the original image.

Opacity - Use the slider to adjust the opacity of the background image.

Maximum cached width - Set the maximum cache width used for the background image. Larger cache size allows for higher-resolution images, but may have a longer load time. Smaller cache size may allow image to load faster, but display with a lower resolution.

Adding images

ControlSpace Remote builder software includes an image library of sources and zones that may be used to create your custom control panel.



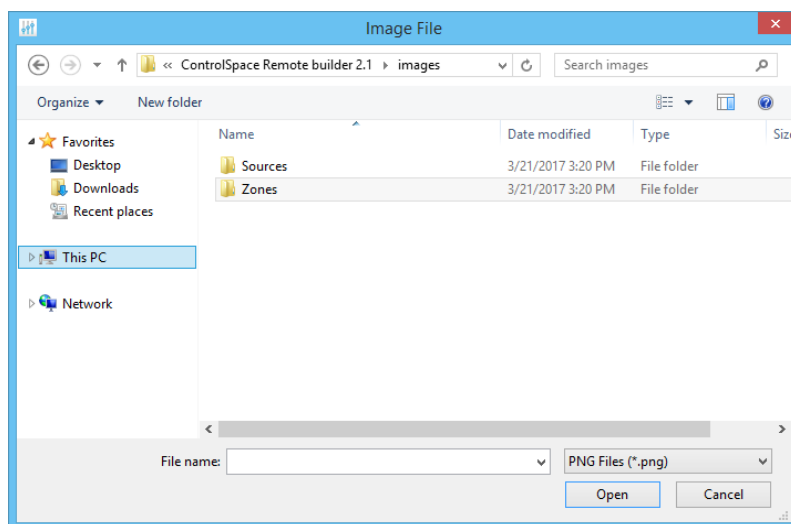
Source Image Library



Zone Image Library

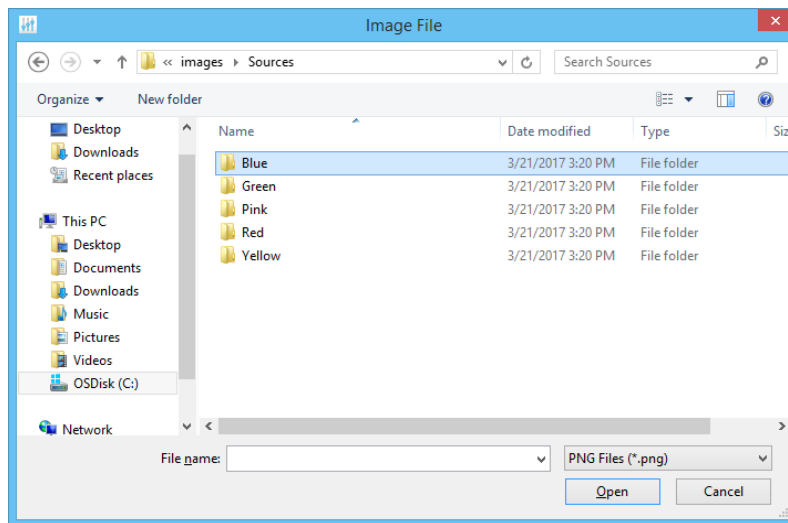
To place a library image on the canvas,

1. Follow the steps 1-3 above and drag the image icon into the canvas.
2. In the **Properties** tab, navigate to the directory for the Sources and Zones folders.



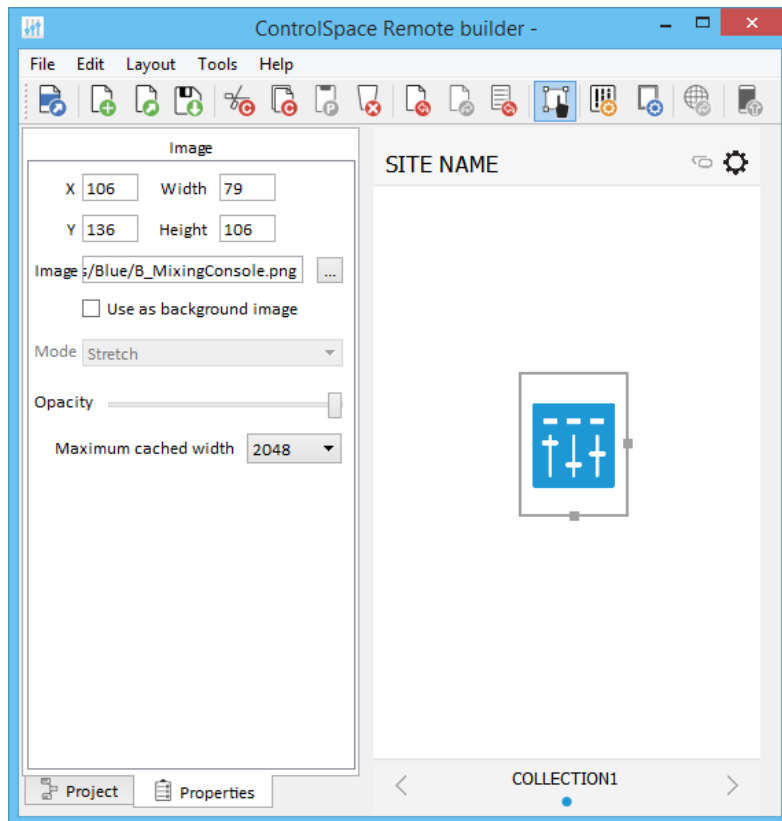
Locating Sources and Zones images

3. Open one of the folders to find the available images. Library images are available in five colors.



Choosing colored images

- Open the folder for the color you want, select an image and click **Open**. The image will appear on the canvas.



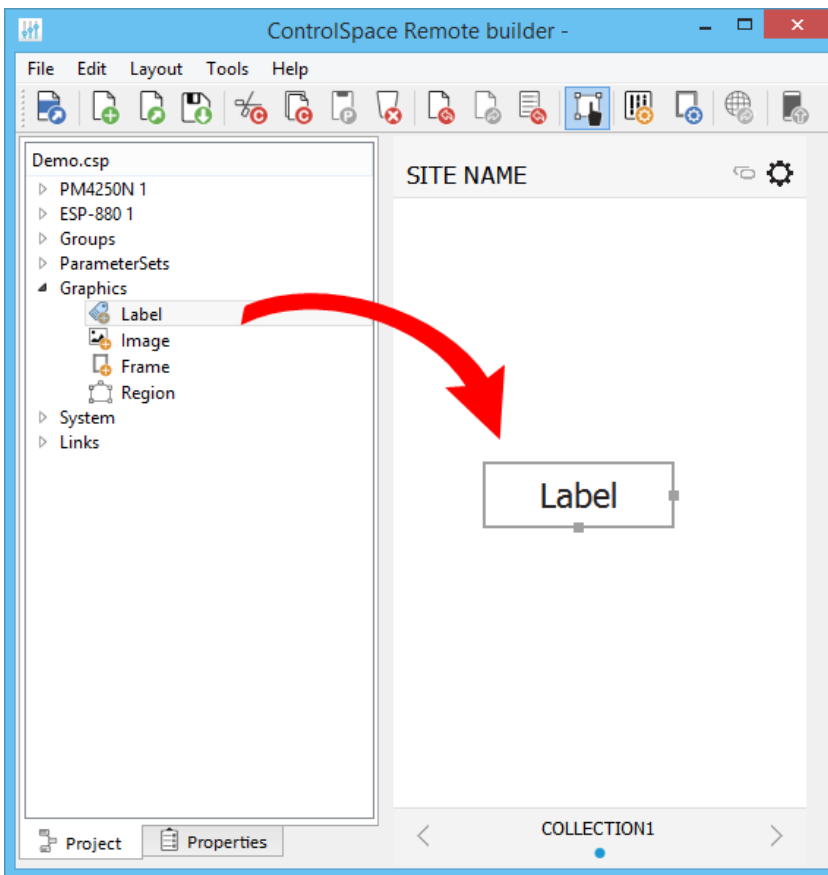
Selected Blue Image on Canvas

NOTE: Image colors match the Skin accent colors selected in the Canvas Setup properties.

- Re-size the image by dragging the handles on the right and bottom edges of the image frame.

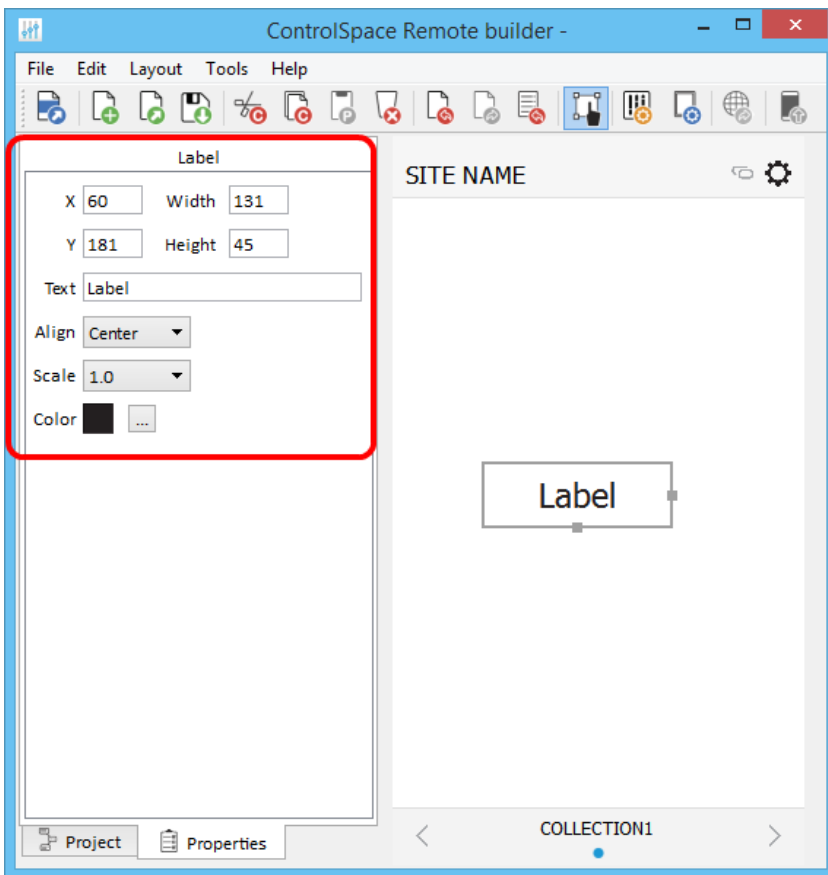
Adding Text Frames & Labels

Using the **Label** graphic you can place a text field on other graphics creating labels or text strings. Labels can be re-sized by dragging the handles on the right and bottom edges of the frame.



Dragging a Label into the Canvas

Double-clicking the Label in the canvas or clicking the **Properties** tab reveals the Label properties.



Label Properties

Label Properties are defined as follows:

X/Y - X/Y coordinates of the upper-left corner of the frame.

Width/Height - width and height of the frame.

Text - text field for the label.

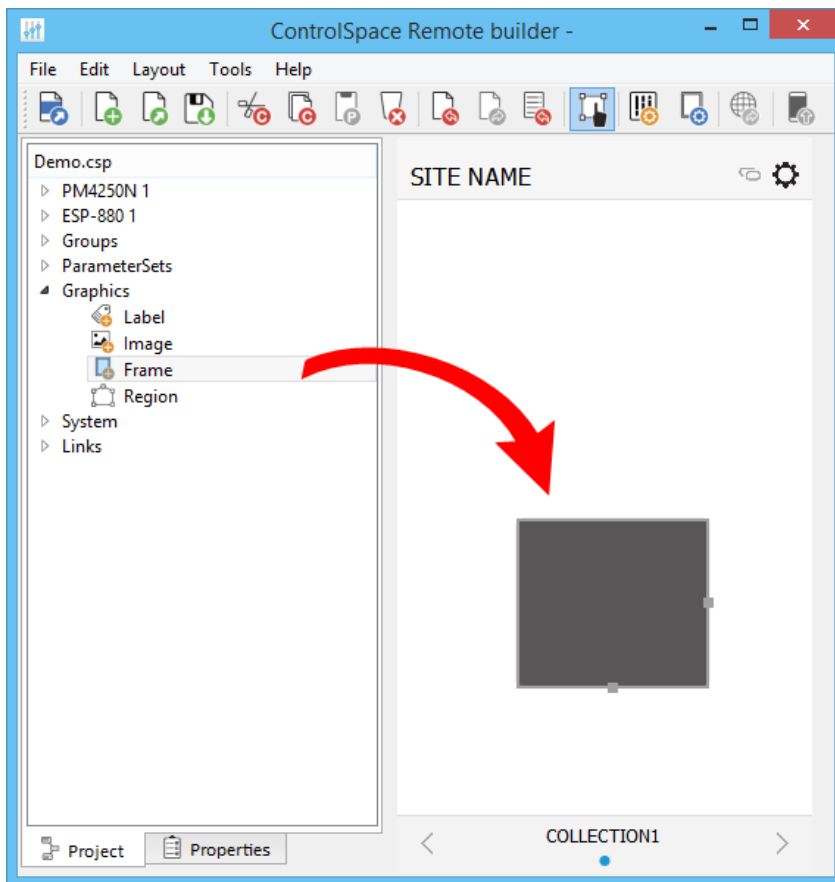
Align - positions the text left, right, or center.

Scale - changes the size of the text.

Color - changes the color of the text.

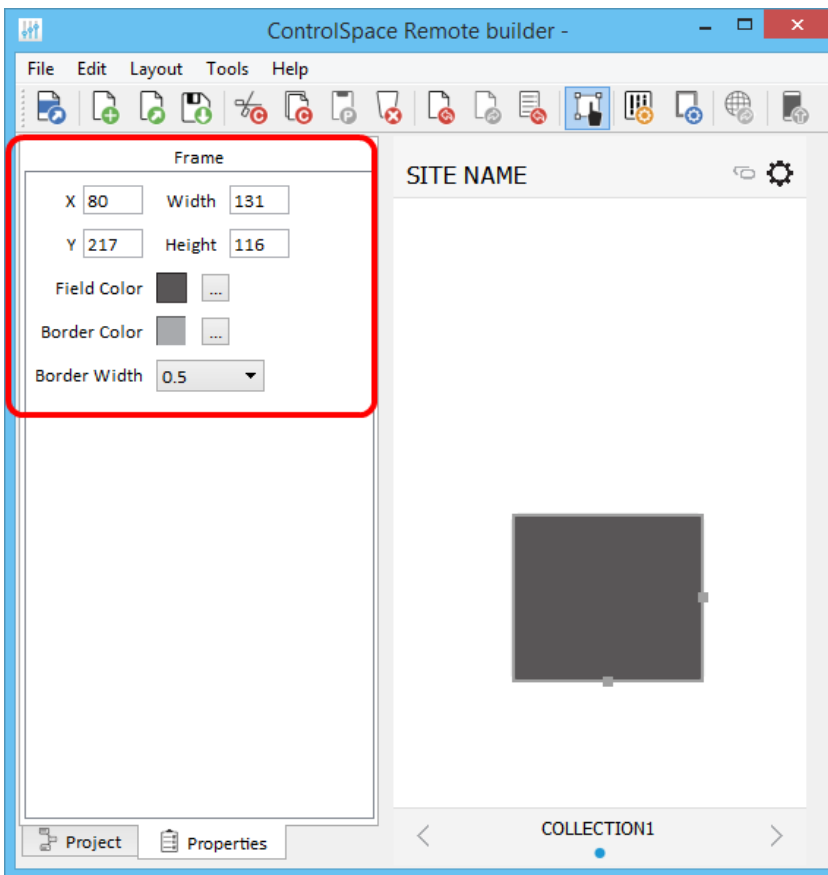
Adding Frames

Using the **Frame** graphic you can add a rectangular shape to your design. Frames can be re-sized by dragging the handles on the right and bottom edges of the frame.



Dragging a Frame into the canvas

Double-clicking the Frame in the canvas or clicking the **Properties** tab reveals the Frame properties.



Frame Properties

Frame Properties are defined as follows:

X/Y - X/Y coordinates of the upper-left corner of the frame.

Width/Height - width and height of the frame.

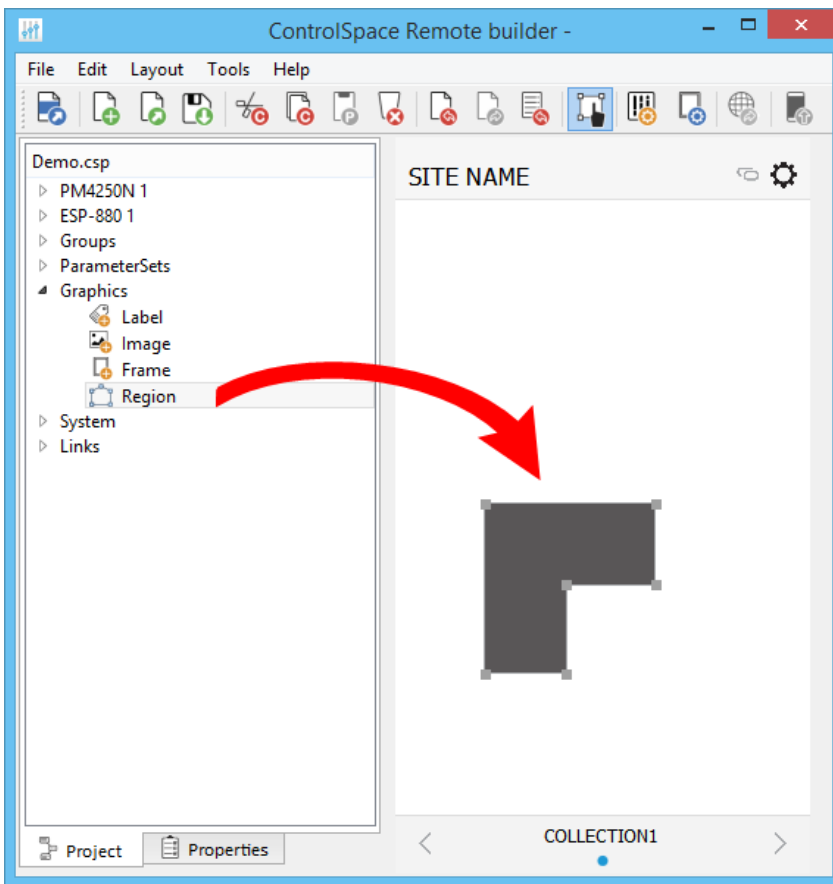
Field Color - changes the fill color.

Border Color - changes the color of the border.

Border Width - changes the line weight of the border.

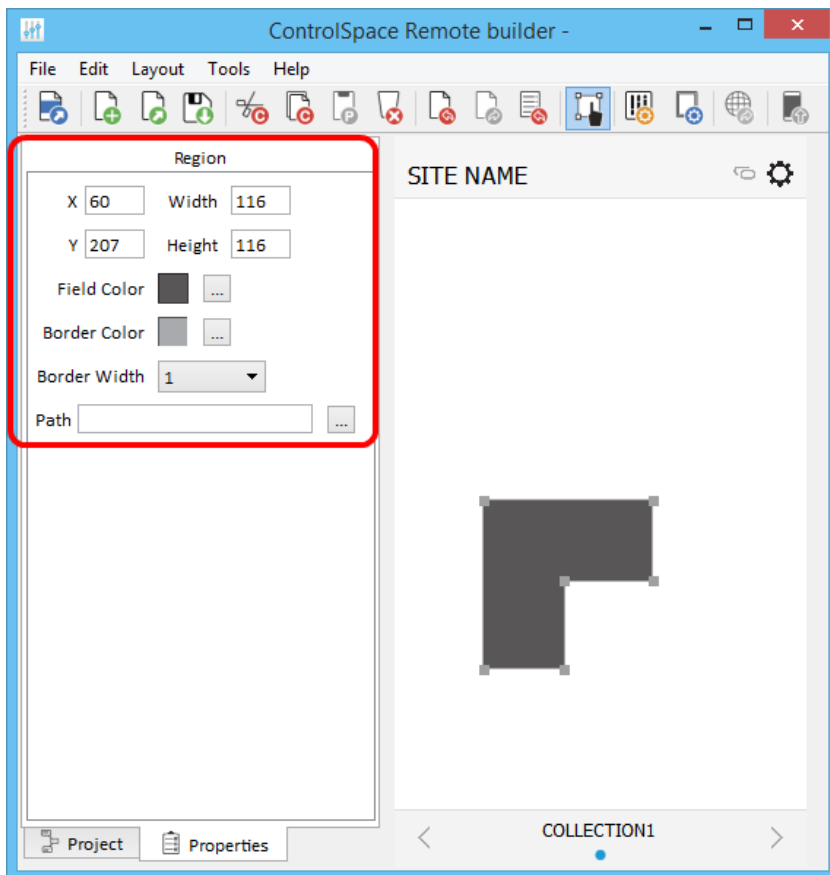
Adding Regions

Using the **Region** graphic you can add a customizable polygon to the canvas. A Region can be linked to an existing control panel. Regions can be re-shaped by dragging the handles on the edges of the frame.



Dragging a Region into the canvas

Double-clicking the Region in the canvas or clicking the **Properties** tab reveals the Region properties.



Region Properties

Region Properties are defined as follows:

X/Y - X/Y coordinates of the upper-left corner of the frame.

Width/Height - width and height of the region.

Field Color - changes the fill color.

Border Color - changes the color of the border.

Border Width - changes the line weight of the border.

Path - links the region to an existing control panel.

Creating Custom Controls

Project controls listed in the tree view can be dragged into a custom panel design. The appearance of buttons, sliders, and drop lists can be changed using their individual properties.

You can create:

Custom Buttons

Custom Sliders

Custom Drop Lists

Custom RCGroups

Custom Parameter Sets

Custom Parameter Set Lists

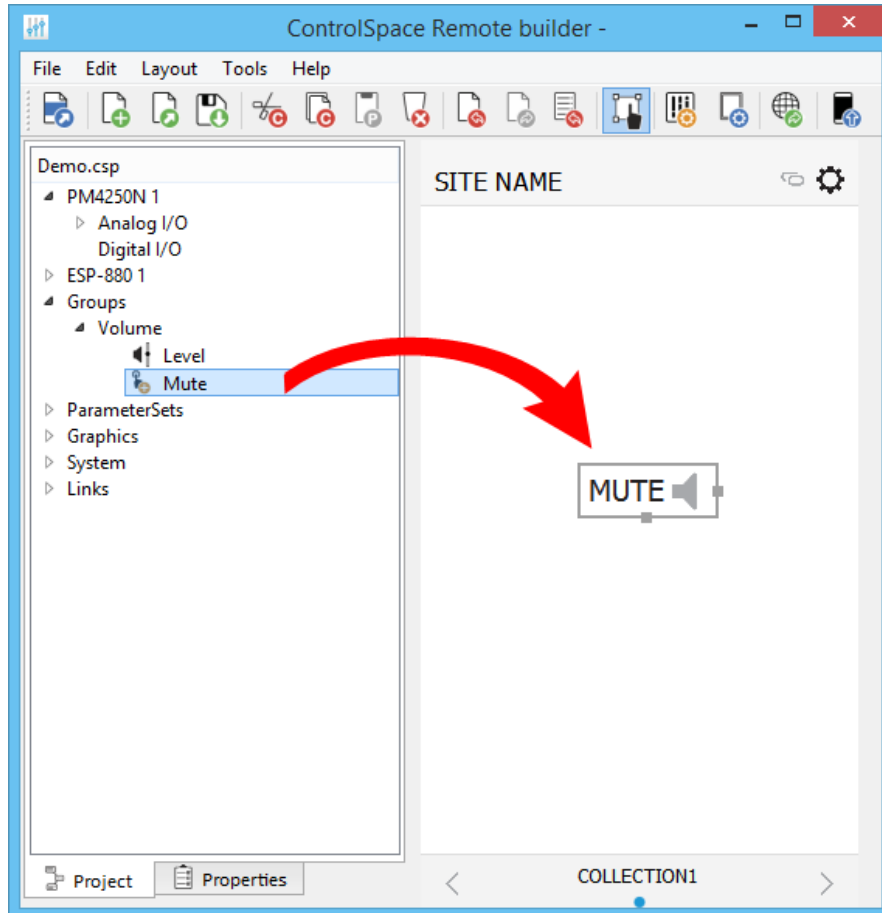
Custom Links

Custom Setup Button

Custom Remote Connection Indicator

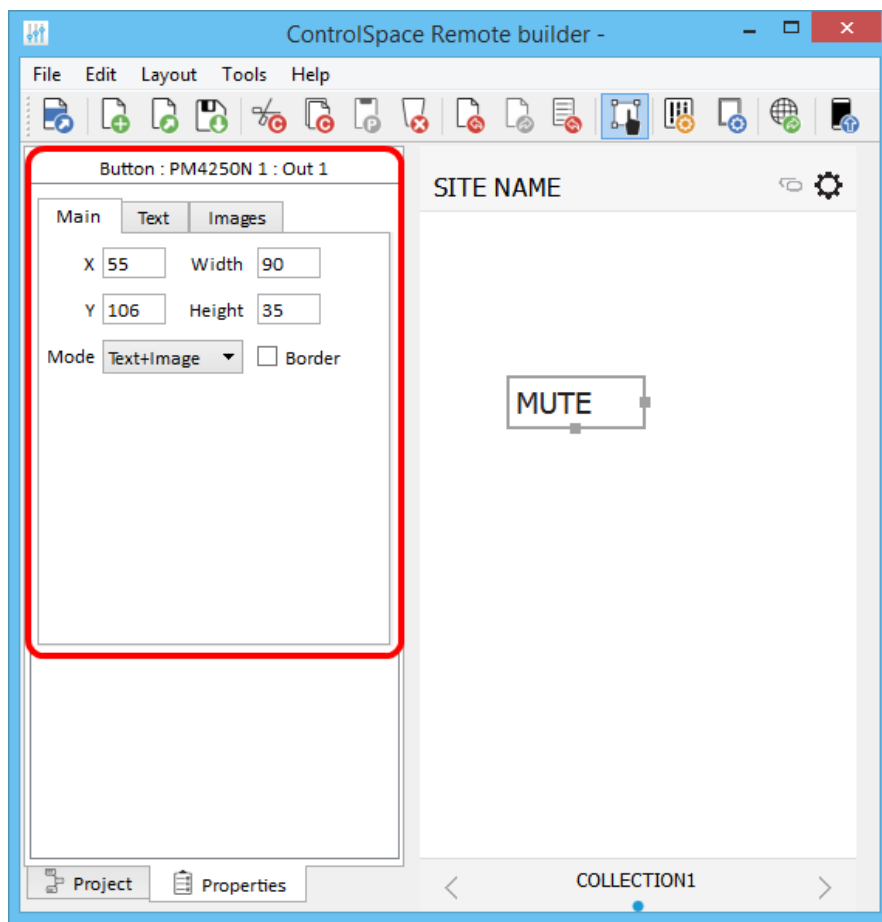
Custom Buttons

1. From the **Project** tab, drag a button into the canvas.
2. Using the handles on the right and bottom edges, re-size the button.



Dragging a Button into the Canvas

3. To access the button properties, double-click the button or click the **Properties** tab.



Viewing the Mute Button Properties

- Adjust the properties as desired, using the options available in the tabs:

Main Tab:

X/Y – X/Y coordinates of the upper-left corner of the frame.

Width/Height – width and height of the button.

Mode – selects how the button appears: Text, Image, or Text+Image (both).

Border – when checked, places a border around the button.

Text Tab: (only active in Text and Text+Image modes)

Text – allows text entry for button labels when mute is off or on.

Images Tab: (only active in Image and Text+Image modes)

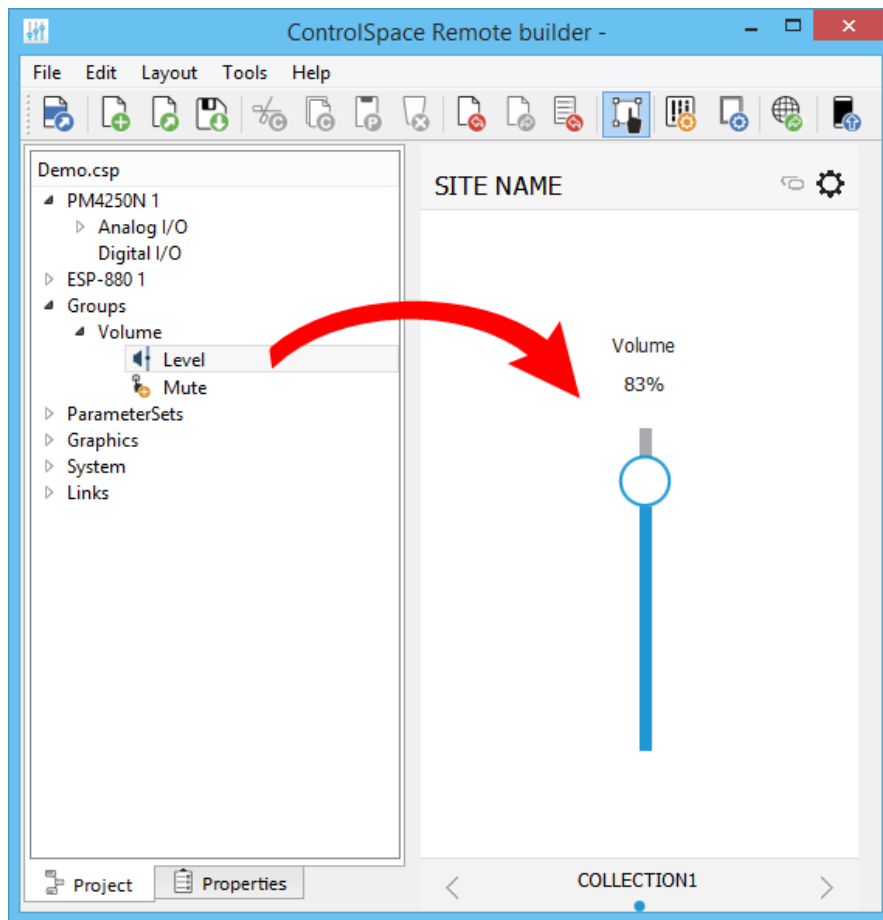
Image – specifies whether to use the default icon or a custom image.

Off – specifies image when mute is off.

On – specifies image when mute is on.

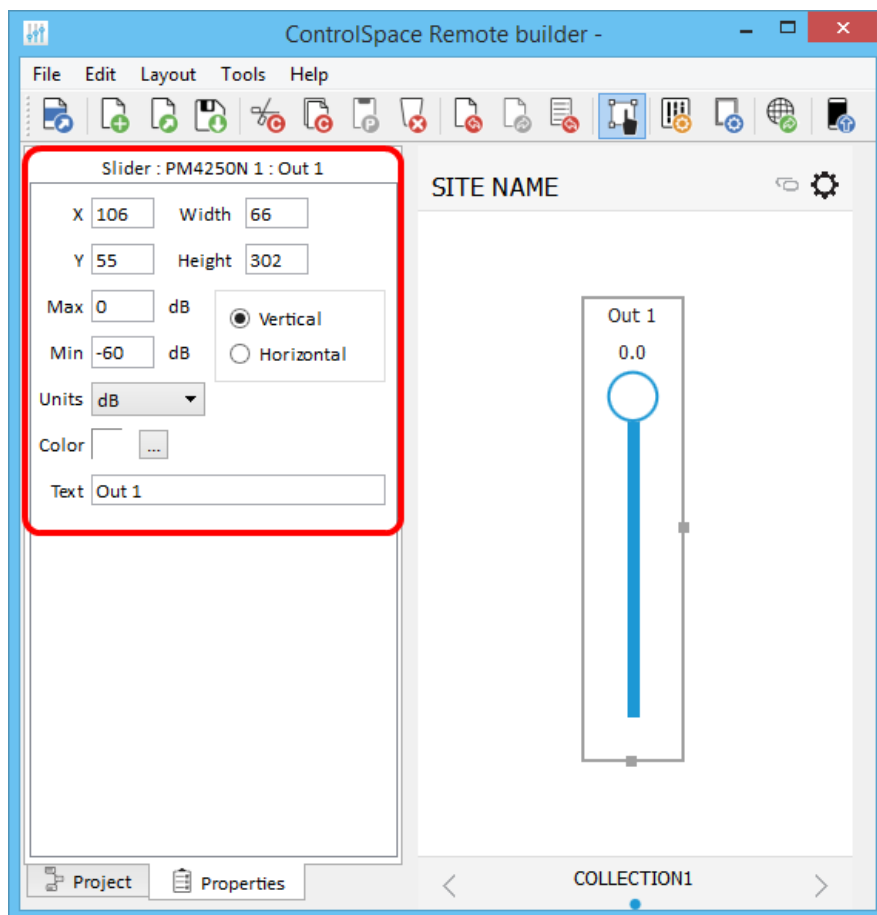
Custom Sliders

- From the **Project** tab, drag a slider into the canvas.
- Using the handles on the right and bottom edges, re-size the slider.



Dragging a Slider into the Canvas

3. To access the slider properties, double-click the slider or click the **Properties** tab



Viewing the Slider Properties

- Adjust the properties as desired:

X/Y – X/Y coordinates of the upper-left corner of the frame.

Width/Height – width and height of the slider.

Max – selects the maximum value on the slider.

Min – selects the minimum value on the slider.

Vertical/Horizontal – sets the orientation of the slider as vertical or horizontal.

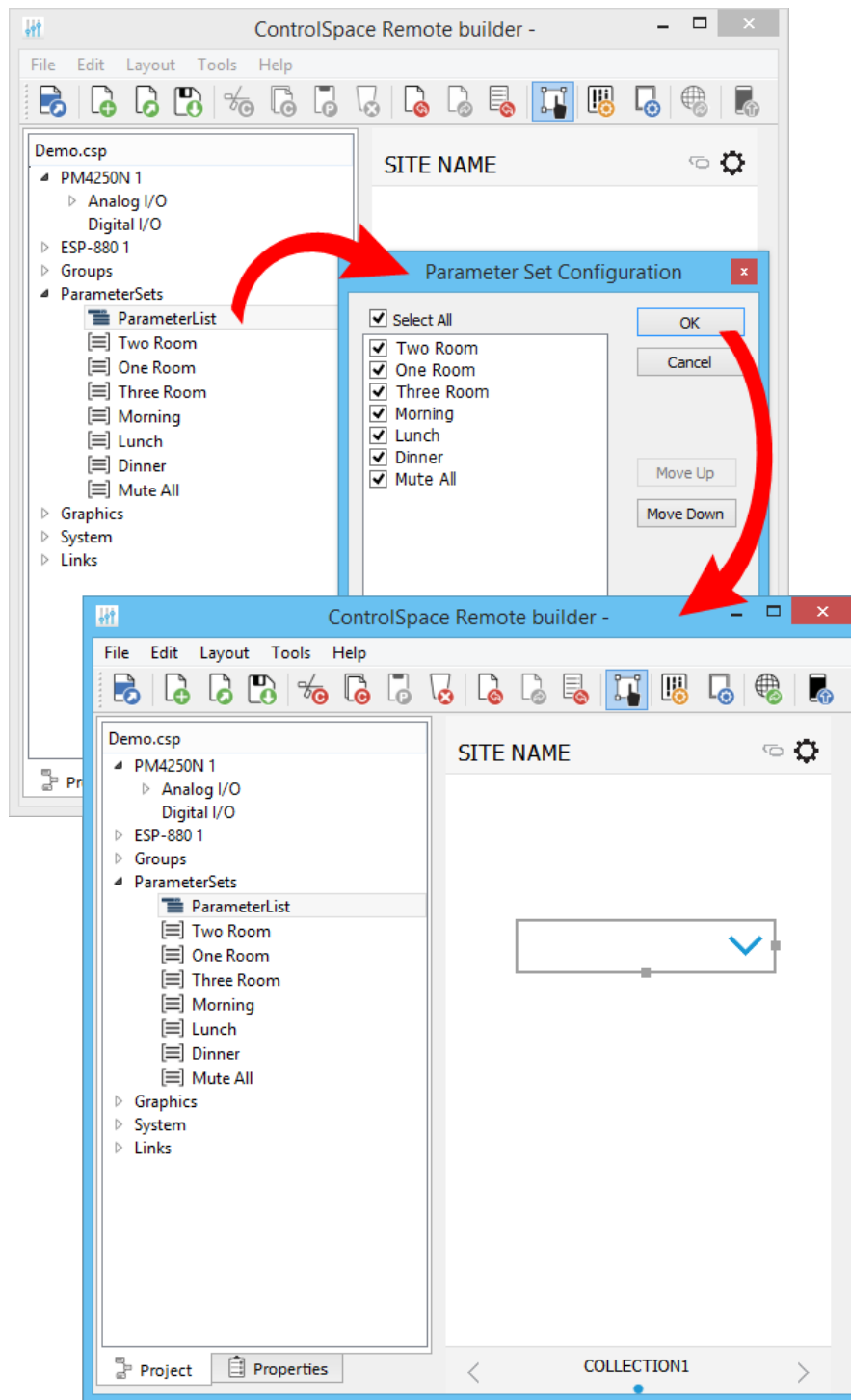
Units – selects dB or Percent.

Color – selects the color of the slider.

Text – allows entry of a label for the slider.

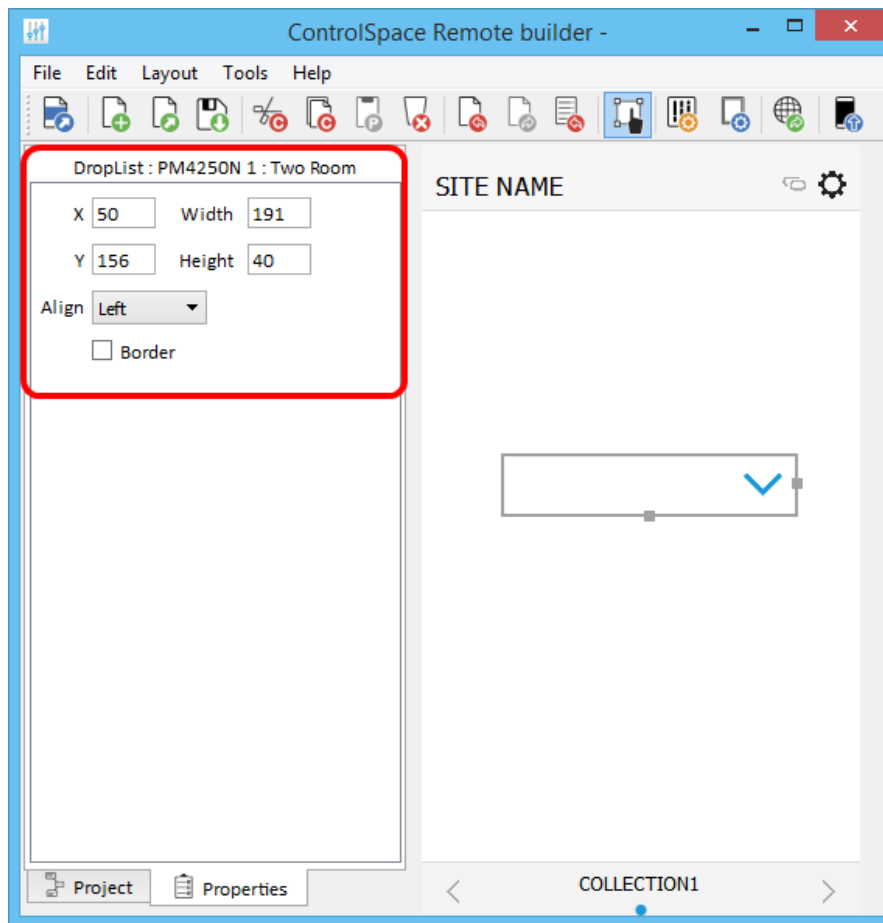
Custom Drop Lists

- From the **Project** tab, drag a list into the canvas.
- Select the items you want in the list and click **OK**.



Dragging a Drop List into the Canvas

3. Using the handles on the right and bottom edges, re-size the drop list.
4. To access the drop list properties, double-click the list or click the **Properties** tab.



Viewing the Drop List Properties

- Adjust the properties as desired:

X/Y - X/Y coordinates of the upper-left corner of the frame.

Width/Height - width and height of the slider.

Align - positions the list Left, Center, or Right

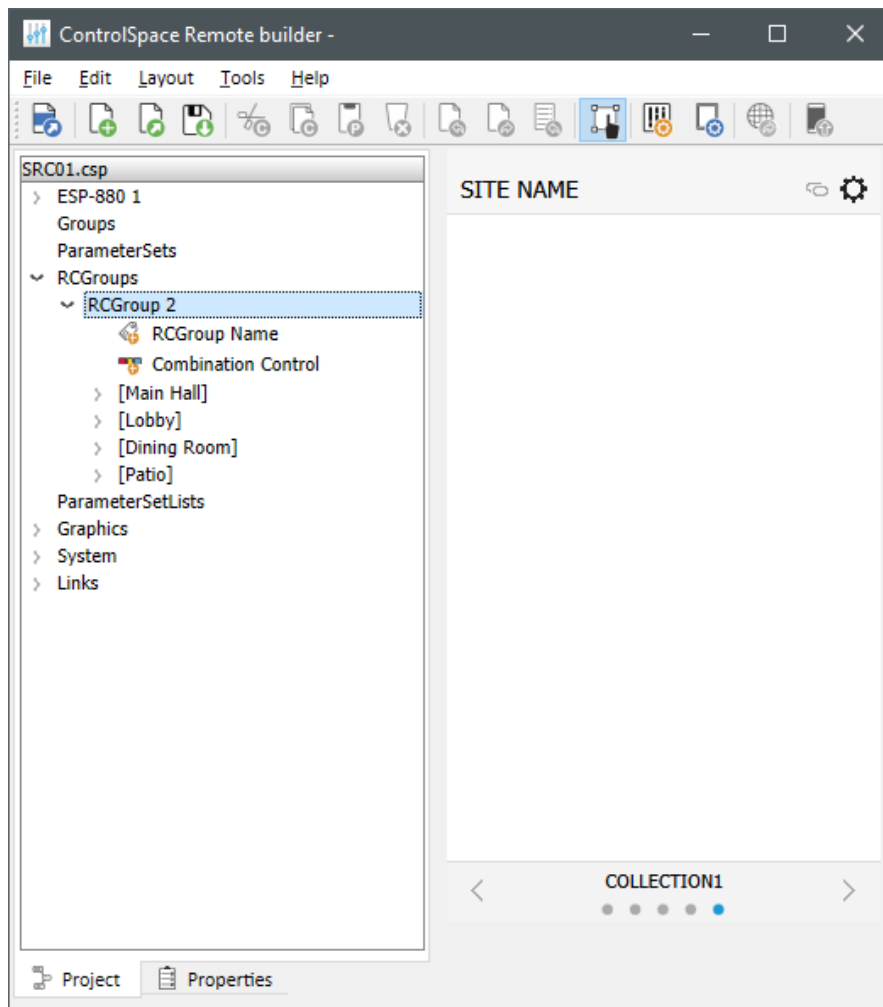
Border - when checked, places a border around the button.

Custom RCGroups

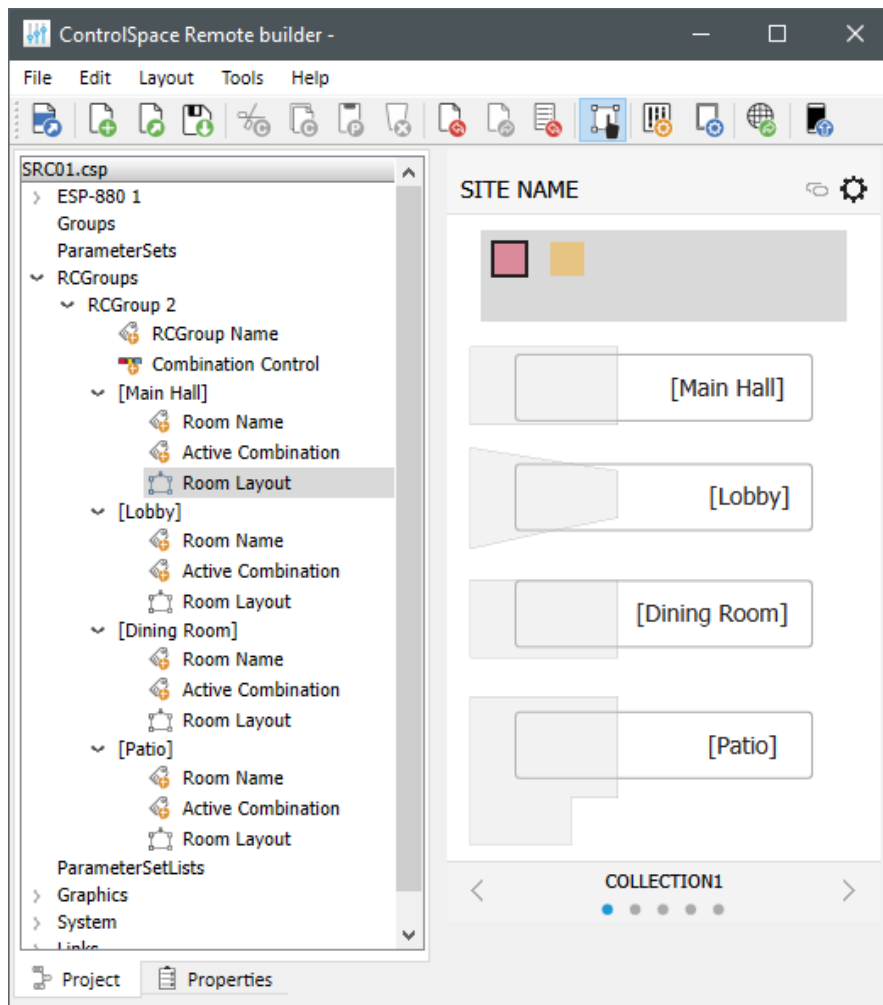
Room Combination Actions

To create a separate panel for your room combining controls:

- In the **Project** tab, expand the **RCGroups** item, and then expand the RCGroup with the desired rooms.



2. **Optional:** Place an image of the room layout on the canvas. You can then place room selection controls over the image to create a more visual reference for them. See [Creating Custom Layouts > Importing Backgrounds](#) to learn how to do this.
3. Click and drag the **Combination Control** for the RCGroup onto the canvas. This is the selector for each room combination.
4. Click and drag the desired control(s) for each room you created in Steps 1-2 onto the canvas.



Room Name - a label that displays the name of the room. If you are using a room selection control without an image of the room layout, we recommend placing this over the room selection control.

Active Combination - a field that displays the names of the other rooms that are currently combined with this room.

Room Layout (Selector) - a selector that adds or removes the room to or from the selected room combination. The selector is a polygon that you can adjust so it represents the physical layout of the room. Click and drag a handle on the edge of the layout to move it.

- To access the properties of an item in any of the panels, double-click the item or click the **Properties** tab. Adjust the properties as desired.

RCGroup items have the following properties:

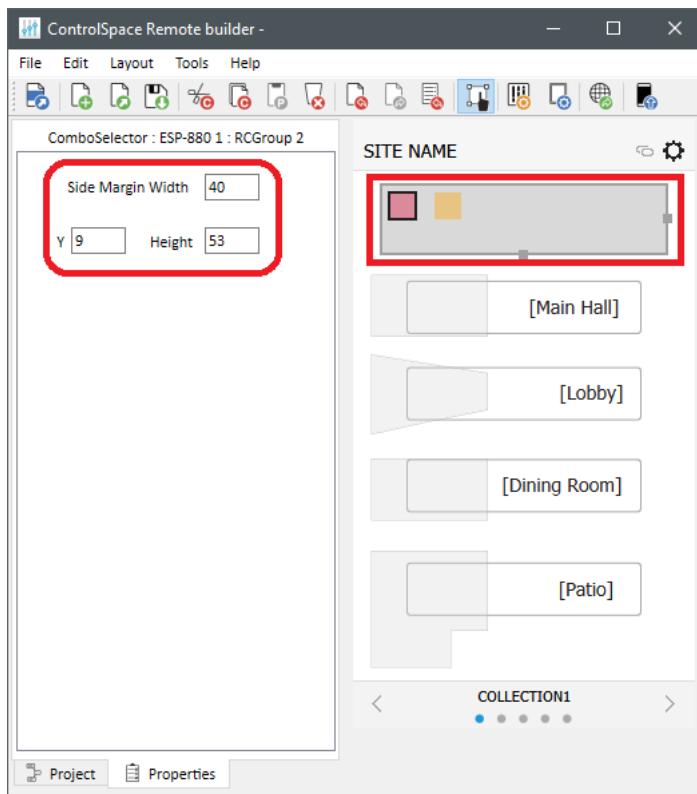
RCGroup Name - This item is a label with its text automatically set to the name of the room (see [Creating Custom Layouts > Adding Text Frames & Labels](#) to learn more). If you are using a room selection control without an image of the room layout, we recommend placing this over the room selection control.

Combination Control:

Y - the Y coordinate of the upper-left corner of the selector frame.

Height - the height of the selector frame, including the space for a scroll bar, when needed.

Side Margin Width - the width of the margin on either side of the selector frame. Change this setting to adjust the width of the control (which is automatically centered on the canvas).



Room Name – the properties are identical to those of a label (see [Creating Custom Layouts > Adding Text Frames & Labels](#)).

Active Combination: This item is useful when placed on a panel representing a single room (see [Room Combination Audio Controls](#) below to learn more).

Y – the Y coordinate of the upper-left corner of the frame.

Height – the height of the selector frame, including the space for a scroll bar, when needed.

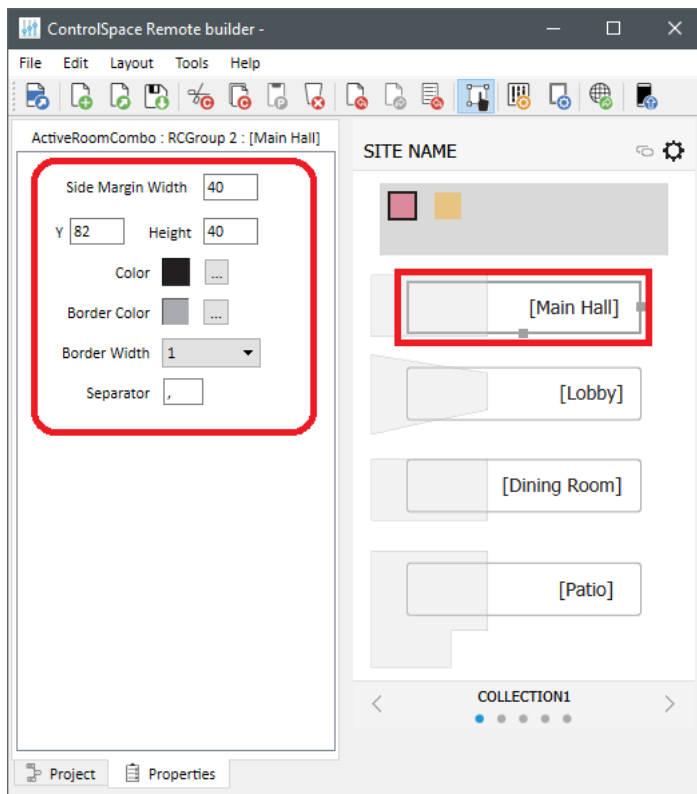
Side Margin Width – the width of the margin on either side of the selector frame. Change this setting to adjust the width of the control (which is automatically centered on the canvas).

Color – the color of the text inside of the frame.

Border Color – the color of the border of the frame.

Border Width – the width of the border of the frame.

Separator – the character(s) that separate the combined room names shown in the frame.

**Room Layout (Selector):**

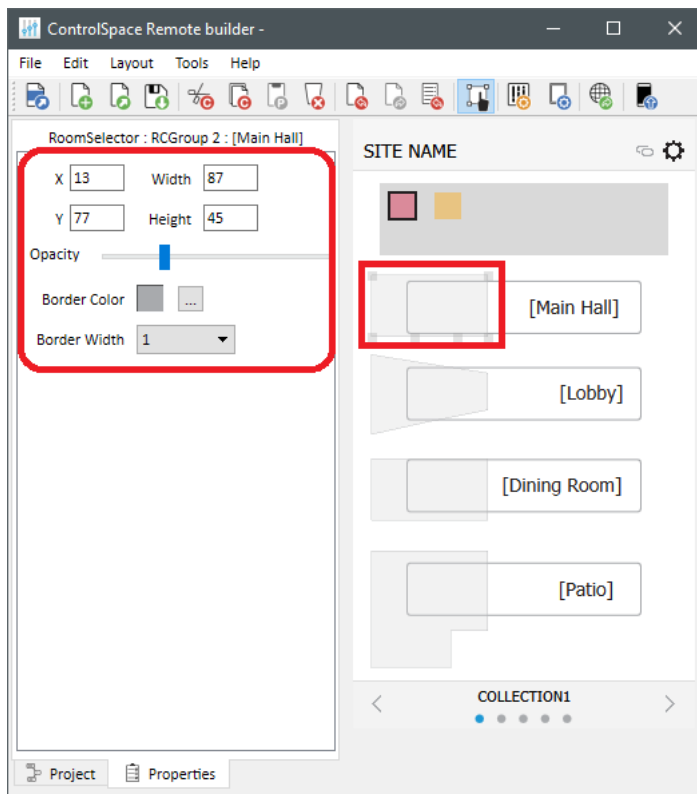
X/Y - X/Y coordinates of the upper-left corner of the region.

Width/Height - width and height of the region.

Opacity - determines the transparency of the region.

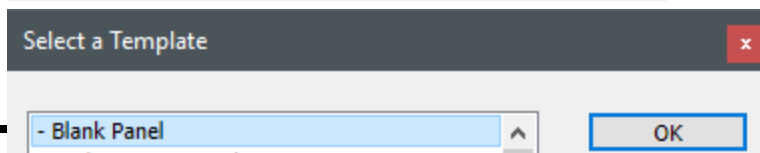
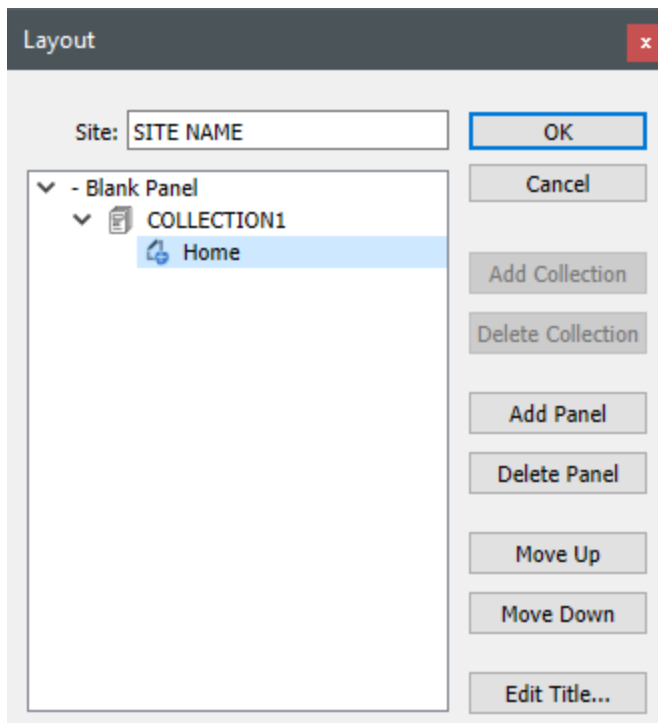
Border Color - the color of the border of the region.

Border Width - the width of the border of the region.

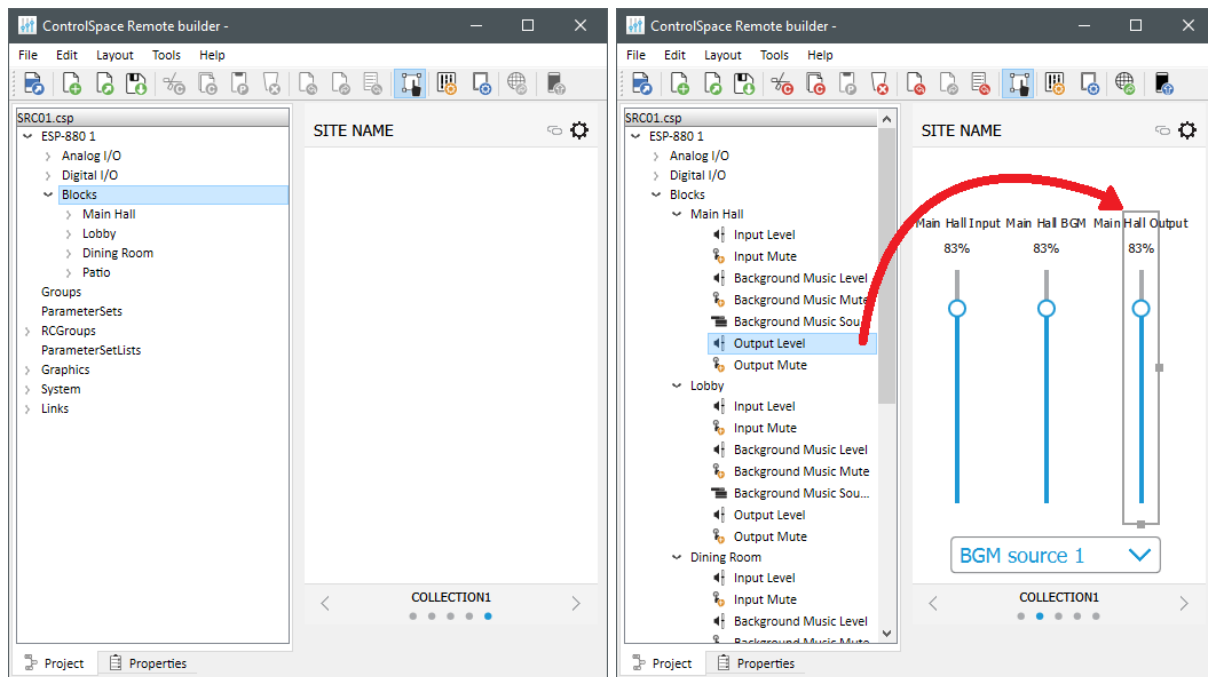


Room Combination Audio Controls

To create an additional panel for each room you want to add:



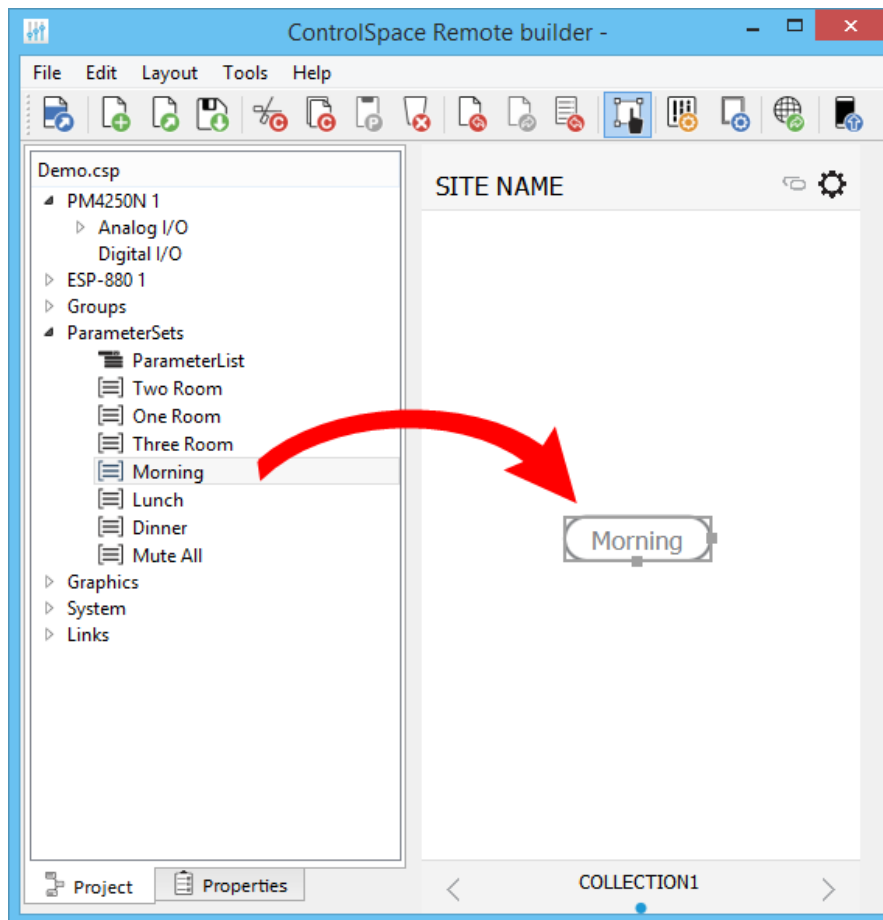
1. Click the **Layout** icon in the toolbar, or click **Tools > Layout**.
2. In the **Layout** window, select the desired collection, and then click **Add Panel**.
3. In the **Select a Template** window, select **- Blank Panel**, and then click **OK**.
4. In the **Layout** window, click **OK**. Below the canvas, there should be an additional dot in the **Status** bar to indicate a new panel.
5. In the **Project** tab, expand the node(s) containing the desired audio controls (controls for standard room combiner blocks [**StRC**] and conference room router blocks [**CRR**] are under the **Blocks** node of a device).
6. Click and drag the desired audio control(s) for the room(s) onto the canvas.
7. **Recommended:** Place the **Active Combination** item of a room on its corresponding panel. See [Room Combination Actions](#) above to learn about this.



The audio controls for each block are described elsewhere in this help topic: [Custom Buttons](#), [Custom Sliders](#), [Custom Drop Lists](#), [Custom Parameter Sets](#), [Custom Parameter Set Lists](#), [Custom Links](#), [Custom Setup Button](#), or [Custom Remote Connection Indicator](#).

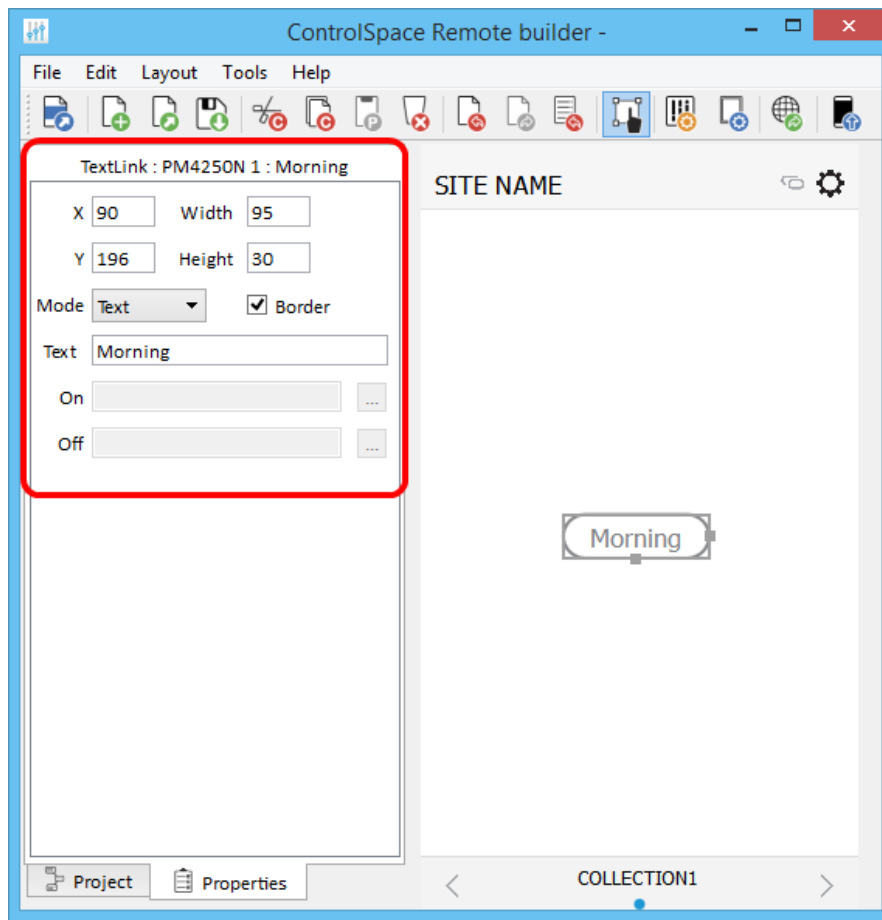
Custom Parameter Sets

1. From the **Project** tab, drag a Parameter Set into the canvas.



Dragging a Parameter Set into the Canvas

2. Using the handles on the right and bottom edges, re-size the button.
3. To access the properties, double-click the button or click the **Properties** tab.



Viewing the Parameter Set Button Properties

4. Adjust the properties as desired:

X/Y - X/Y coordinates of the upper-left corner of the frame.

Width/Height - width and height of the button.

Mode - selects how the button appears: text, or text+image.

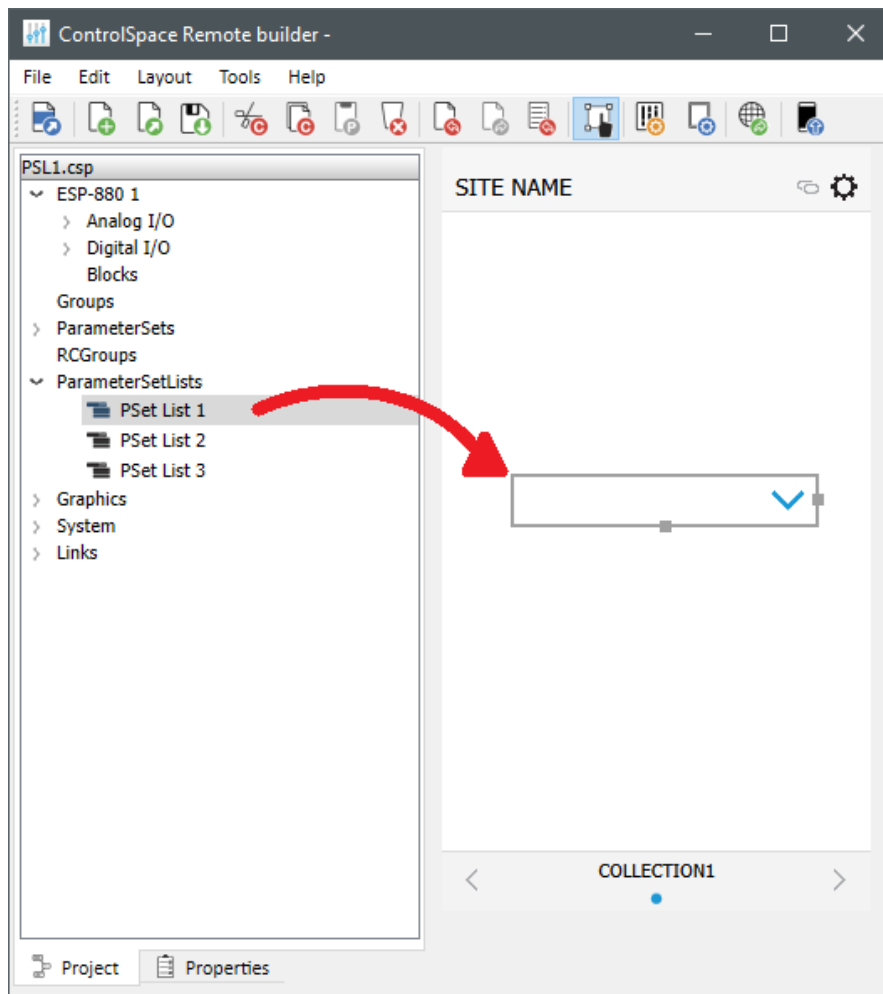
Border - when checked, places a border around the button.

Text - in Text Mode, allows text entry for a button label.

On/Off - in Image Mode, allows an image selection for both on/off states of the button

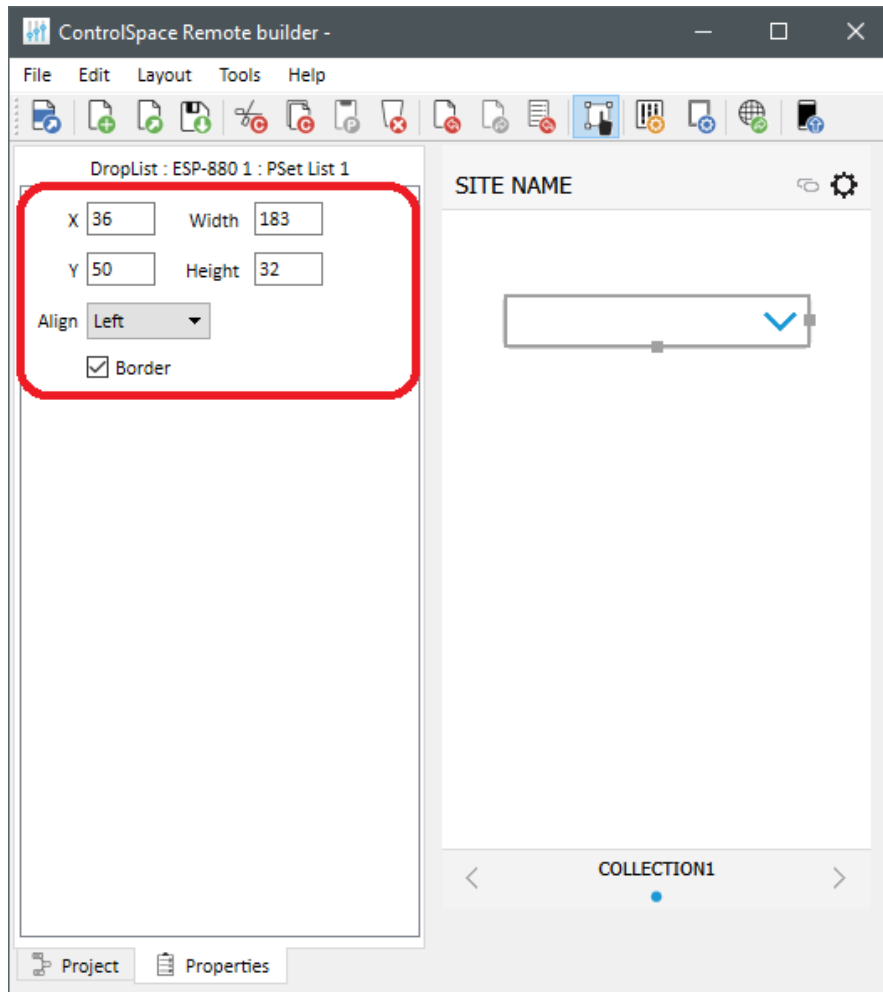
Custom Parameter Set Lists

1. From the **Project** tab, drag a Parameter Set List into the canvas.



Dragging a Parameter Set List into the Canvas

2. Using the handles on the right and bottom edges, re-size the button.
3. To access the properties, double-click the button or click the **Properties** tab.



Viewing the Parameter Set List Button Properties

- Adjust the properties as desired:

X/Y - X/Y coordinates of the upper-left corner of the frame.

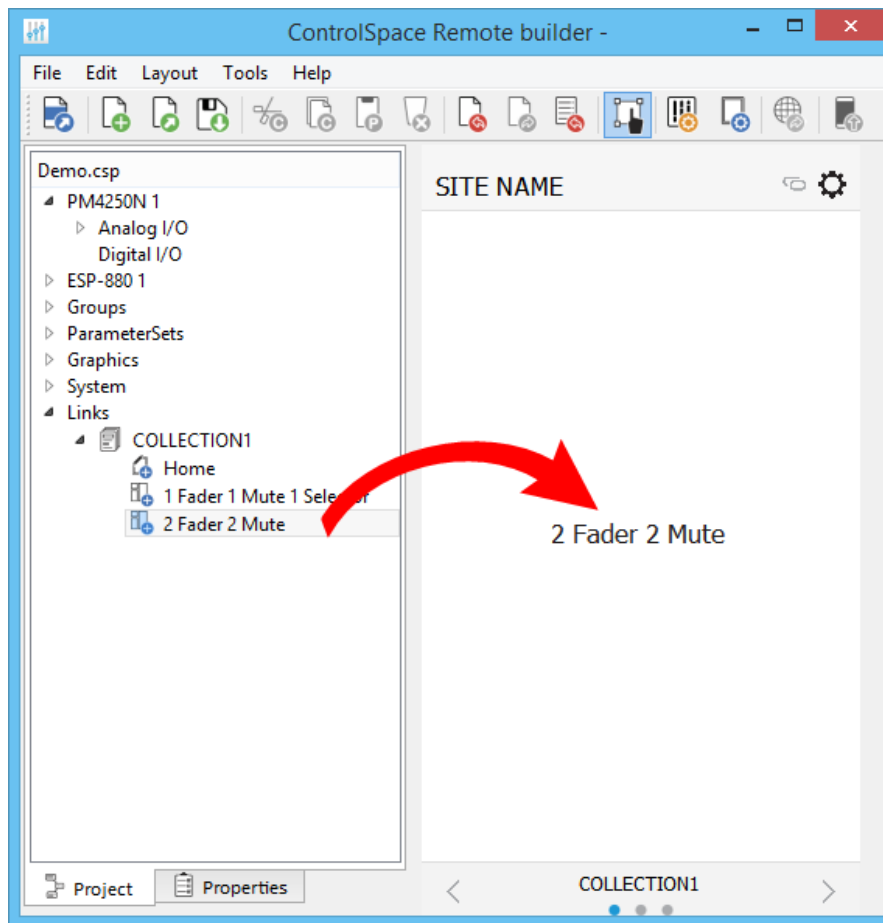
Width/Height - width and height of the button.

Align - selects the horizontal alignment of the text in the button.

Border - when checked, places a border around the button.

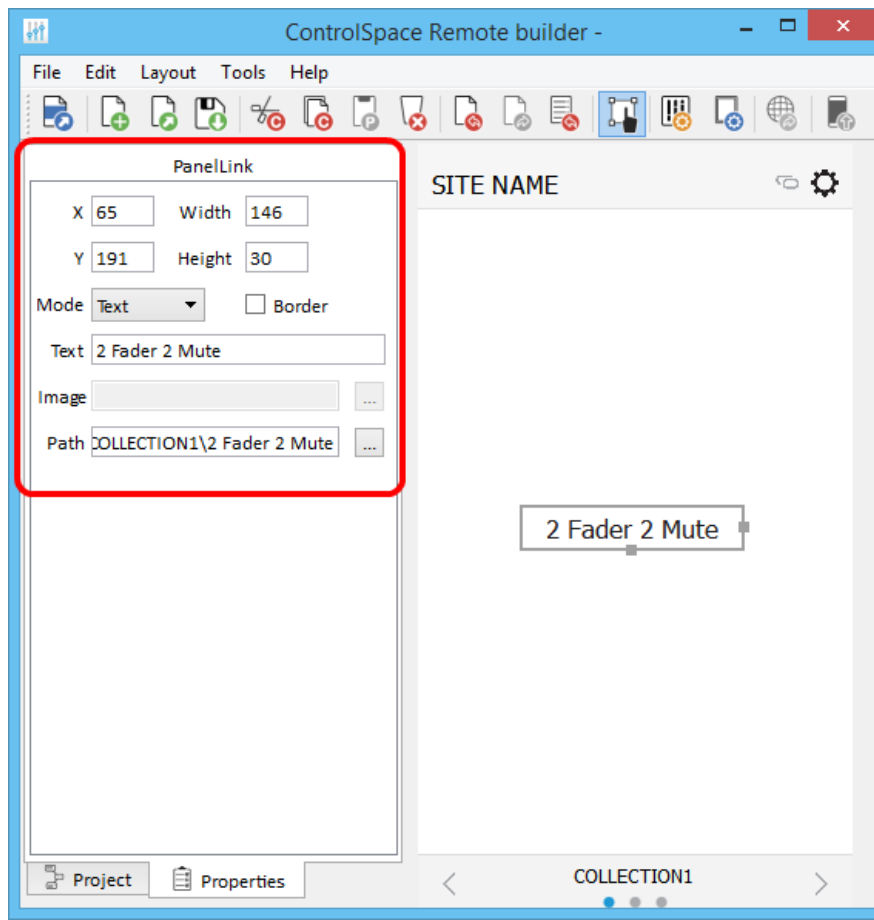
Custom Links

- From the **Project** tab, drag a control panel from Links into the canvas.



Dragging a Link into the Canvas

2. Using the handles on the right and bottom edges, re-size the button.
3. To access the properties, double-click the button or click the **Properties** tab.



Viewing the Panel Link Properties

4. Adjust the properties as desired:

X/Y - X/Y coordinates of the upper-left corner of the frame.

Width/Height - width and height of the button.

Mode - selects how the button appears: text or image.

Border - when checked, places a border around the button.

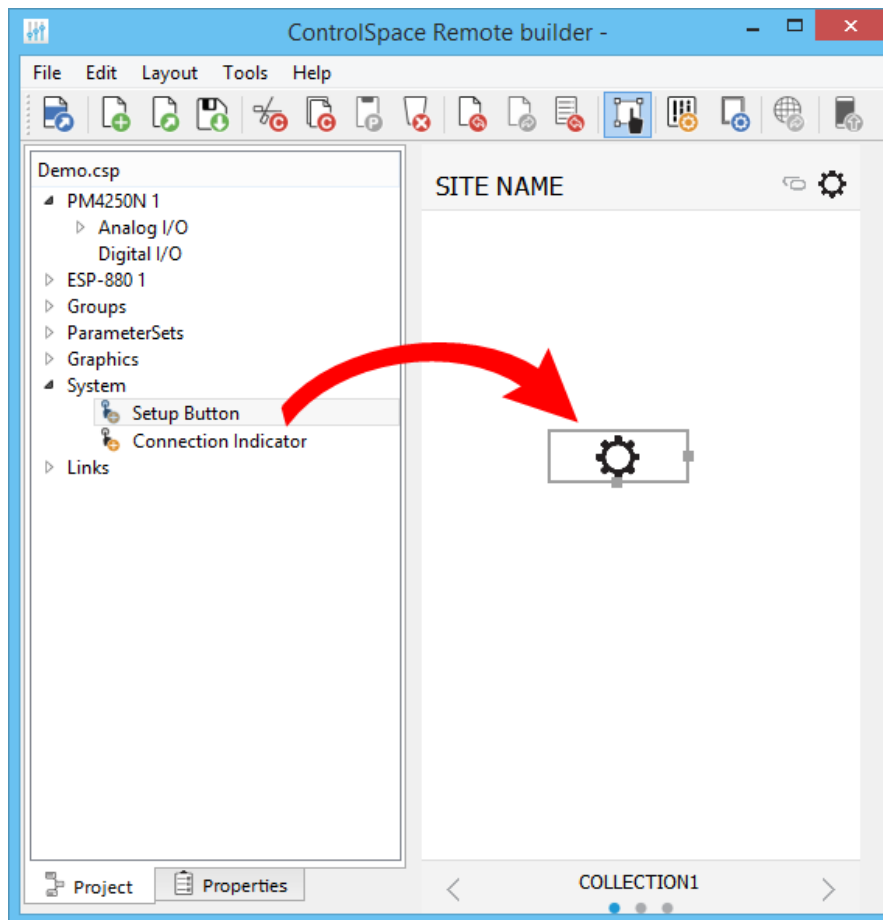
Text - in Text Mode, allows text entry for a button label.

Image - in Image Mode, allows selection of an image to use on the button.

Path - links the button to an existing control panel.

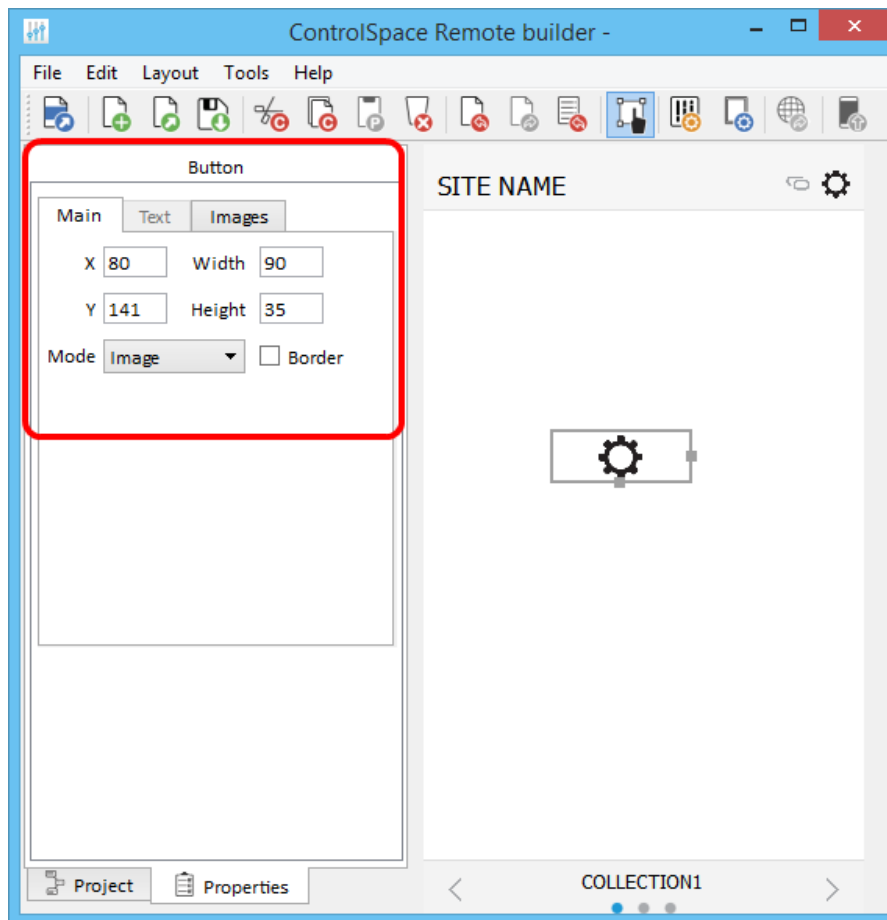
Custom Setup Button

1. From the **Project** tab, drag a setup button from System into the canvas.



Dragging a Setup Button into the Canvas

2. Using the handles on the right and bottom edges, re-size the button.
3. To access the properties, double-click the button or click the **Properties** tab.



Viewing the Button Properties

- Adjust the properties as desired, using the options available in the tabs:

Main Tab:

X/Y – X/Y coordinates of the upper-left corner of the frame.

Width/Height – width and height of the button.

Mode – selects how the button appears: Text, Image, or Text+Image (both).

Border – when checked, places a border around the button.

Text Tab: (only active in Text and Text+Image modes)

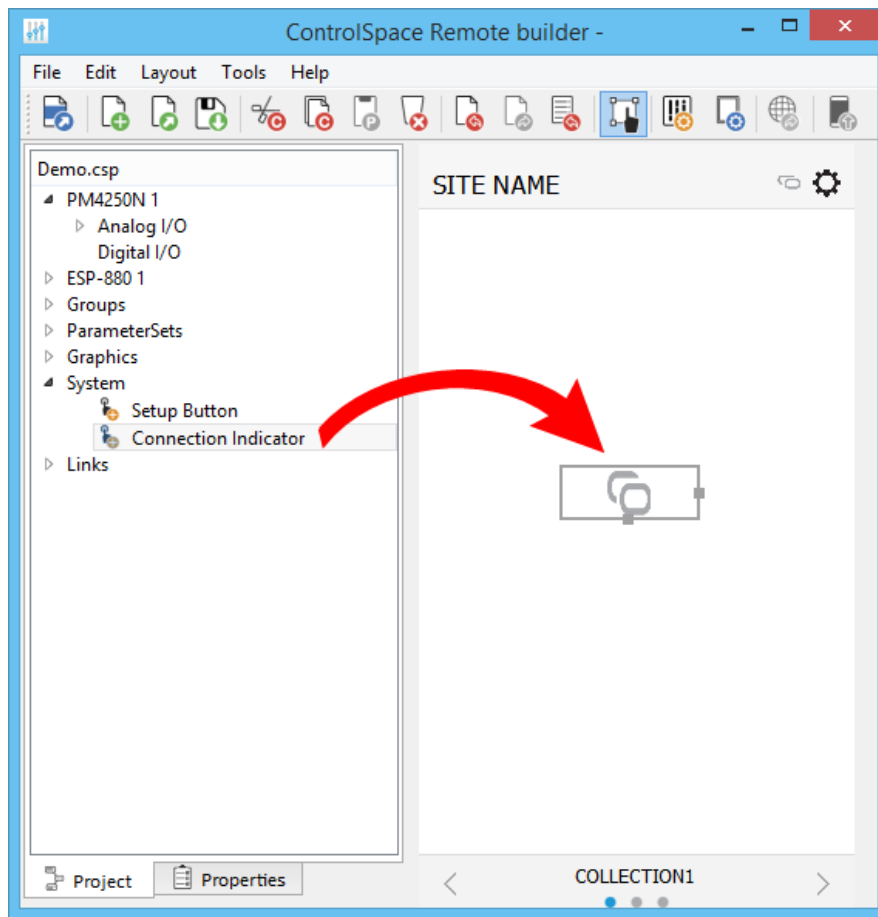
Text – allows text entry for a button label.

Images Tab: (only active in Image and Text+Image modes)

Image – specifies whether to use the default icon or a custom image. If you choose Custom, browse to your desired image using the field that appears below the drop-down menu.

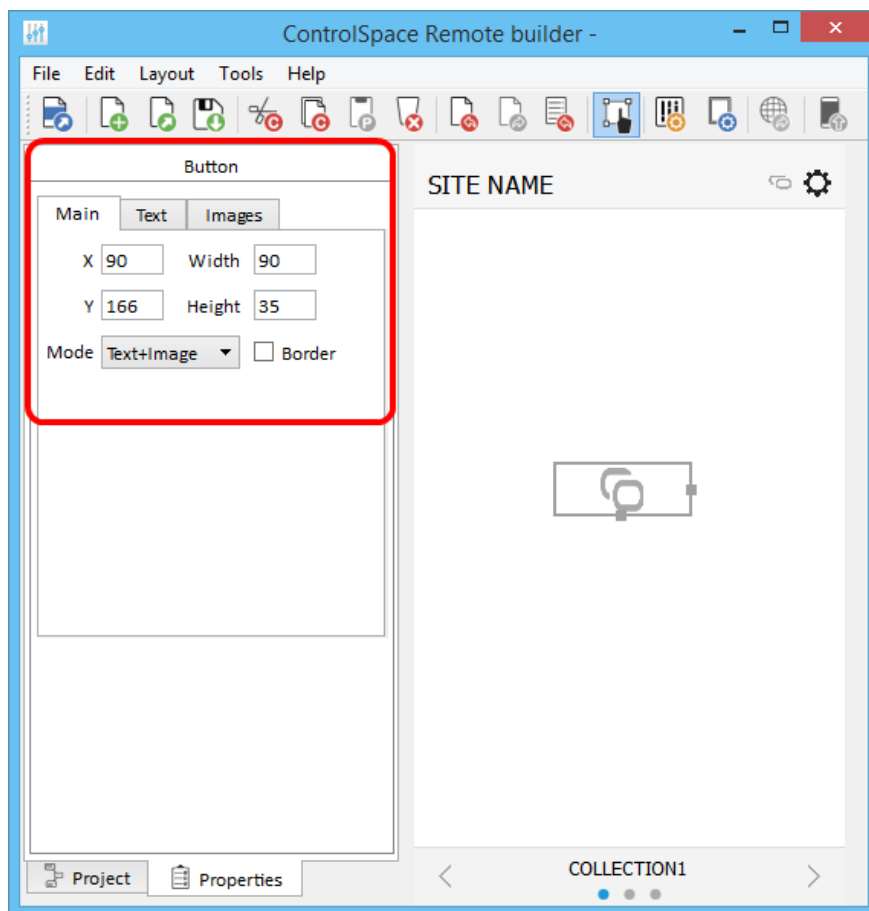
Custom Remote Connection Indicator

- From the **Project** tab, drag a connection indicator button from System into the canvas.



Dragging a Connection Indicator Button into the Canvas

2. Using the handles on the right and bottom edges, re-size the button.
3. To access the properties, double-click the button or click the **Properties** tab.



Viewing the Button Properties

- Adjust the properties as desired, using the options available in the tabs:

Main Tab:

X/Y – X/Y coordinates of the upper-left corner of the frame.

Width/Height – width and height of the button.

Mode – selects how the button appears: Text, Image, or Text+Image (both).

Border – when checked, places a border around the button.

Text Tab: (only active in Text and Text+Image modes)

Text – allows text entry for button labels when the connection is off, on, or partial.

Images Tab: (only active in Image and Text+Image modes)

Image – specifies whether to use the default icon or a custom image.

Off – specifies image when the remote connection is off.

On – specifies image when the remote connection is on.

Partial – specifies image when the remote connection is partially active.