

Using the F1 (Magic Box) Update Tool (flashing tool)

July 31st, 2015

If the tool is not installed, please go to page 4 for instructions.

When properly installed the tool can then be launched and function as expected.

1. Plug the Aardvark Tool into a USB port
2. Run Update_Tool.exe
3. With the Aardvark USB plugged in, Click on the Refresh Button This will activate the Aardvark.



4. Connect the Aardvark to the F1 Unit (Note: may have been plugged into F1 at step 1.)



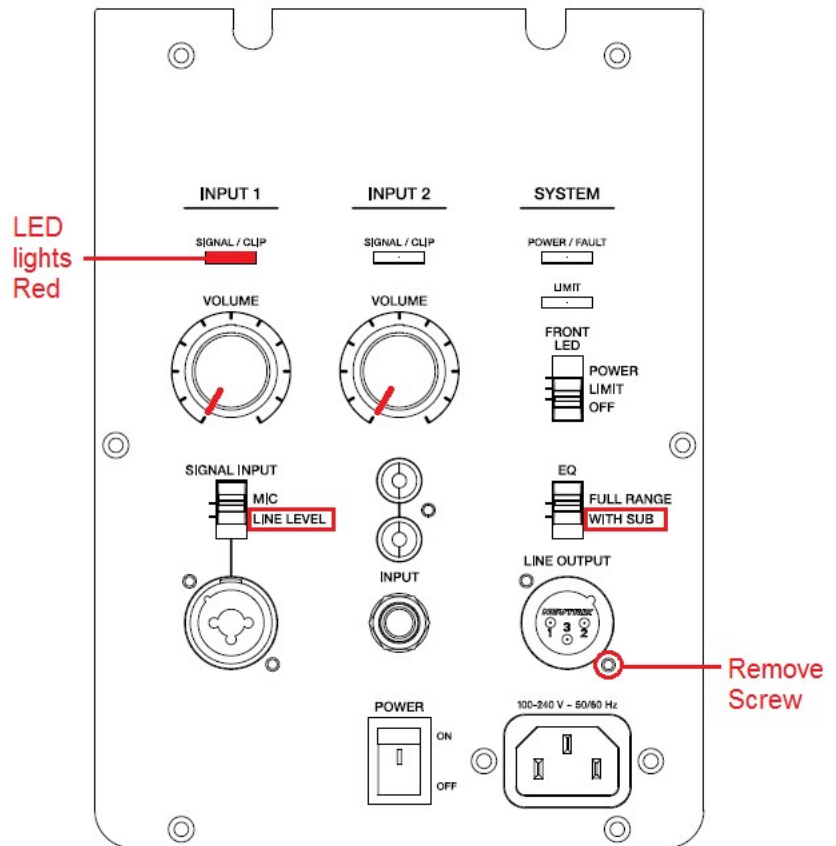
5. Configure the F1 unit following the steps below:

Configuring the F1 for the Update Tool

Mid-High Array (MHA) DSP Panel:

- Power on Unit
- Turn VOLUME's **OFF**
- Set EQ to **WITH SUB**
- Set MIC / LINE to **LINE**
- Remove Screw as shown
- Verify Programming cable is connected to:
SIGNAL INPUT and **LINE OUTPUT**
- Insert a tooth pick or other thin stick into the hole from the removed screw and press the button on the PC board under this so that the INPUT 1 Red **CLIP** LED comes on and the Programming Mode is Enabled.
The tooth pick can then be removed.

Note: There is a 10 second delay from Power ON till the Red **CLIP** LED will light

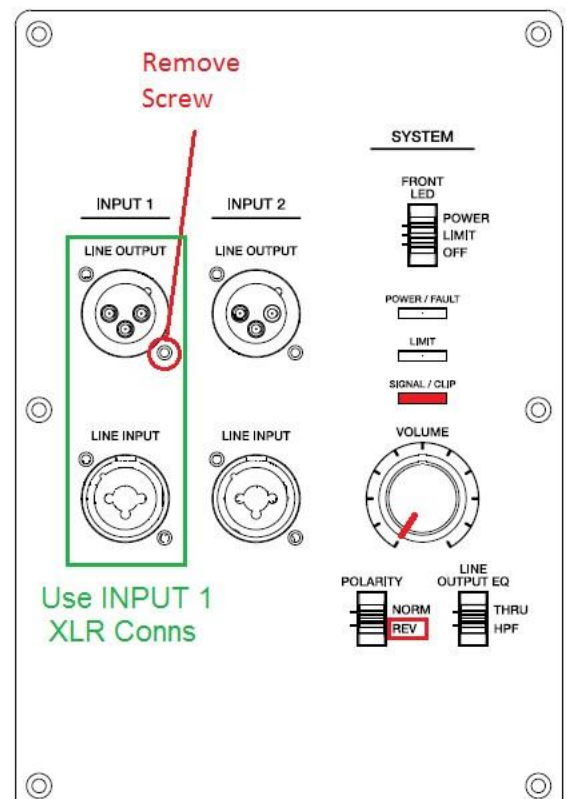


The Red CLIP LED will stay on keeping the F1 in Programming Mode until the Unit is Powered Off after programming is complete.

For the Sub Woofer:

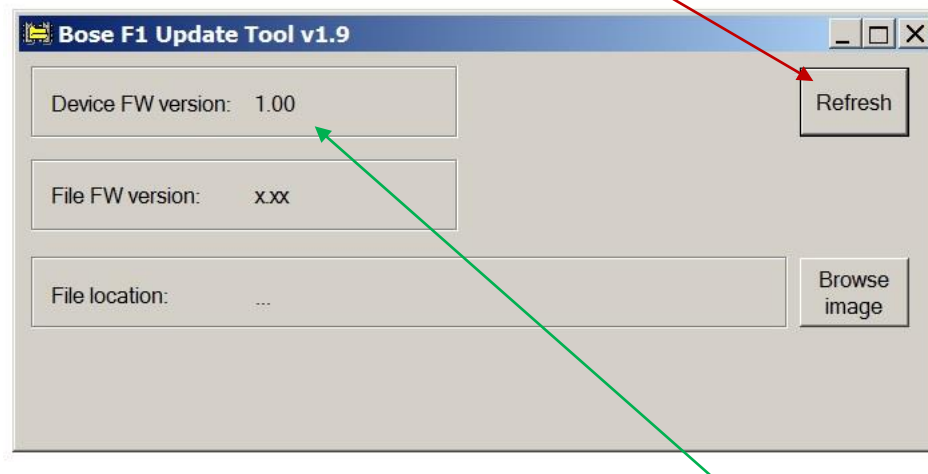
- Power on Unit
- Turn VOLUME **OFF**
- Set POLARITY switch to **REV**
- Verify Programming cable to **INPUT 1** XLR connectors:
SIGNAL INPUT and **LINE OUTPUT**
- Remove screw as shown
- Insert a tooth pick or other thin stick into the hole from the removed screw and press the button on the PC board under this to Enable Programming Mode.
The **SIGNAL/CLIP** LED will Light **RED**

Note: There is a 10 second delay from Power ON till the Red **CLIP** LED will light



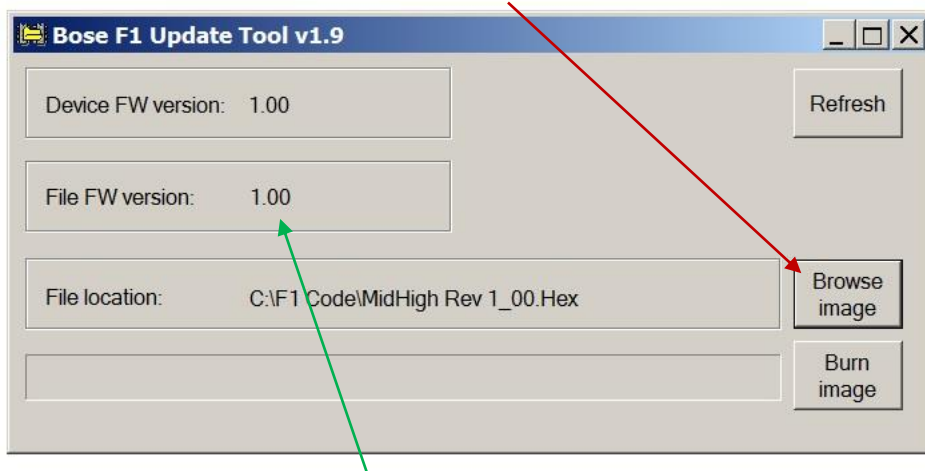
The Red CLIP LED will stay on keeping the F1 in Programming Mode until the Unit is Powered Off after programming is complete.

While in Programming Mode, Click on the Refresh Button



This will return the Rev of the code loaded into the F1: Device FW Version.

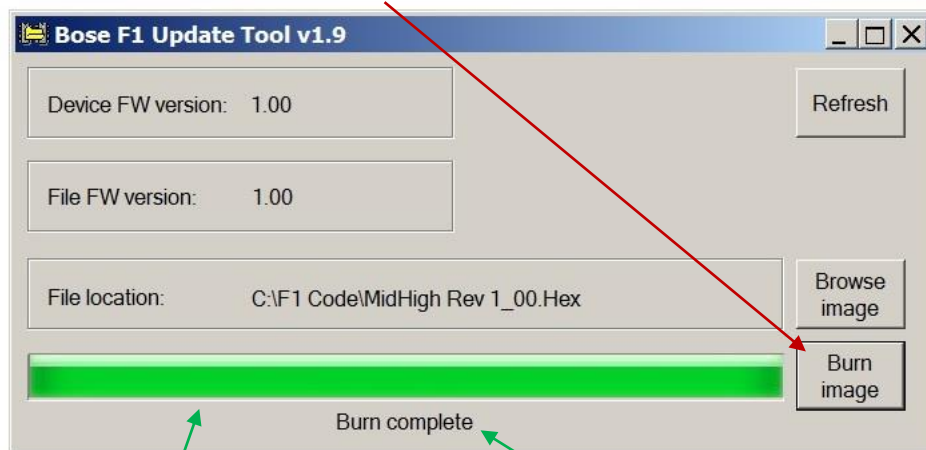
6. Click on the Browse image button to select new code to be loaded



The Rev of the new code File FW version will then be shown

Code can be located under [SV628478](#) for F1 Model 812 and [SV716571](#) for F1 Subwoofer

7. Click on the Burn Image to load code into F1



The Green Bar will fill as the code is loaded, Burn Complete is displayed when done.

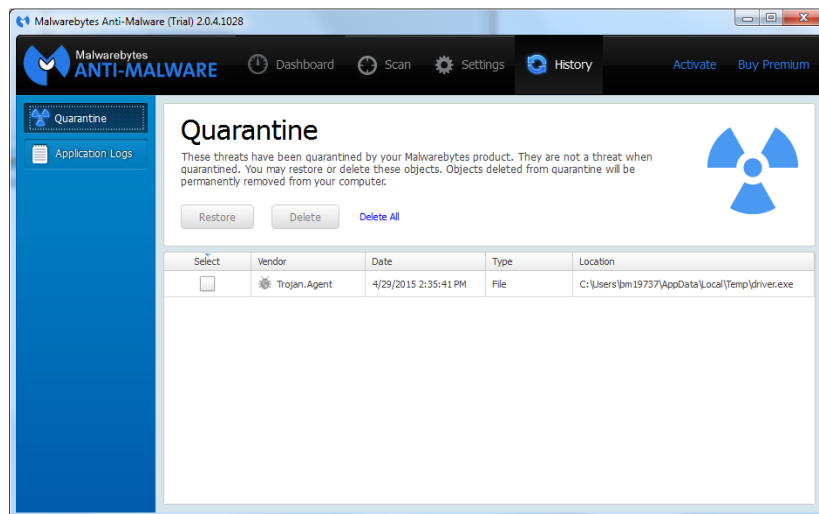
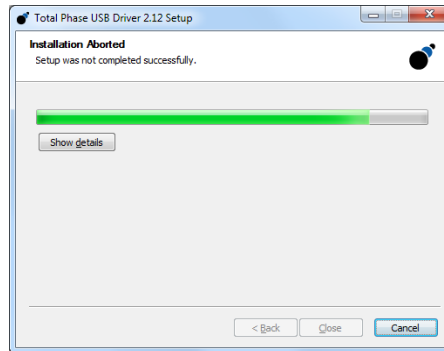
Note: On some computers the Green Bar will not fill in,
The "Burn Complete" still shows up and the code
has been loaded properly.



1. Install software from Projectlink

- a. Download and install Aardvark drivers. These are ESSENTIAL for the Update Tool to work properly.
Located with [SV757633](#)

Note: If MalwareBytes software is running on PC, it will detect the TotalPhase USB 'driver.exe' installer for the Aardvark I²C/SPI device as containing a 'Trojan.Agent': This is False, ignore it.

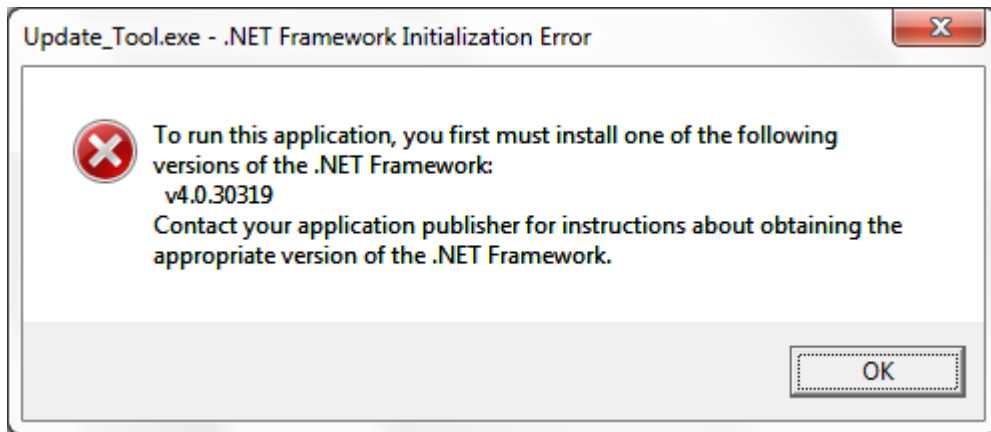


False detection of
Trojan.Agent
Ignore this

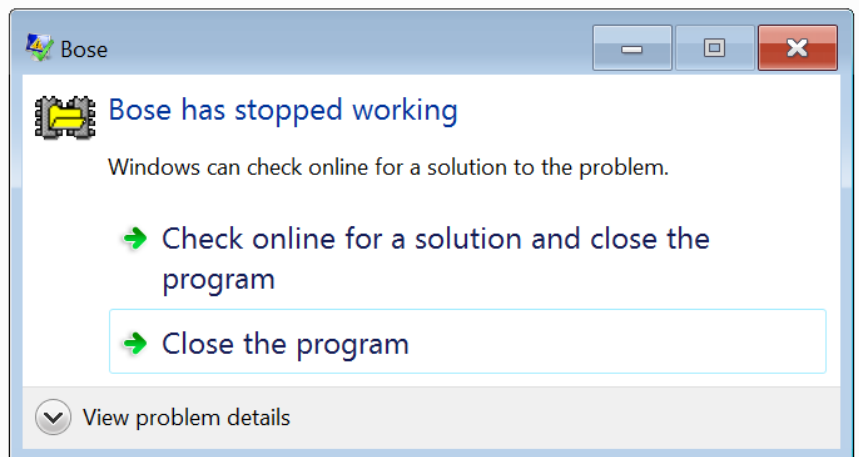
- b. Extract the .zip file and place the folder "Update_Tool_v1.4" in a permanent directory on the computer (for example, "C:/", rather than in the "Downloads" folder. Be sure that all files in the folder remain together. "Aardvark.dll" must remain in the same directory as "Update_Tool.exe"

2. Double click “Update_Tool.exe” to run the magic box updater program

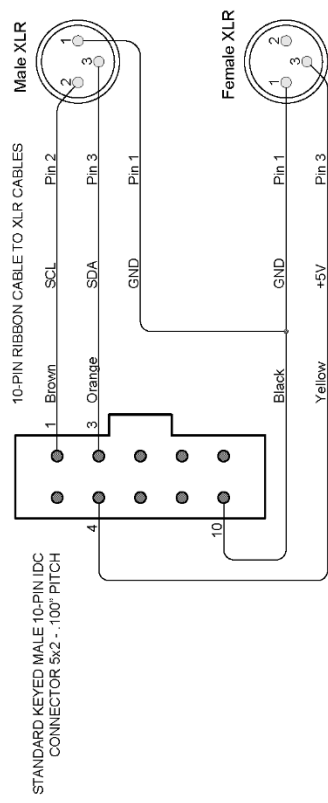
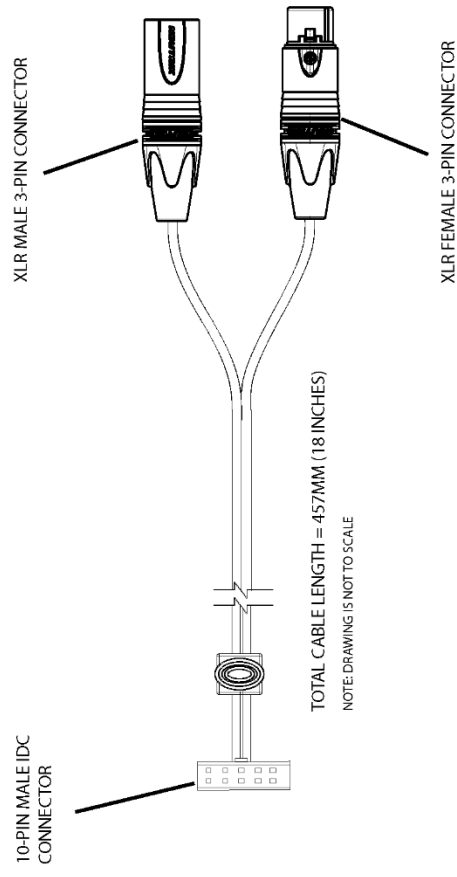
Note: Microsoft .NET v4.5.1 or newer is required for the Update Tool to run.
If the following alert is received, update Microsoft.NET.



If the tool does not run with the following error:



Verify that Aardvark.dll is in the same directory as the Update_Tool.exe



WIRING DIAGRAM

- NOTES:**
1. MATERIAL:
 - A. POLYETHYLENE METEOR SHIELD
 - B. 3 INCHES WELDED METEOR SHIELD
 - C. 3 INCH FEMALE RUBBER OR EQUIVALENT SHIELD.
 - D. 10MM-50G + .000 PITCHED DOUBLE FLUG
 2. FINISH: NA
 3. DIMENSIONS ARE IN MILLIMETERS AND ARE IN ACCORDANCE WITH BOSS DRAWING STANDARD OF 4689H.
 4. TOLERANCES: UNLESS OTHERWISE SPECIFIED:
X.XXX = ±.015
X.XX = ±.015
 5. CONFORM CHARACTERISTICS () PER BOST OPERATING PROCEDURE, CDR 4687Z
 6. SUPPLY PRODUCTION APPROVAL PER BOST OF 8181Z.
 7. CABLE SPECIFICATIONS:
 - FLUG BOULDER: PVC
 - INNER INSULATION: PVC AND STANDARD OR EQUIVALENT.
 - JACKET INSULATION: NYLON COPPER, 24 AWG STRANDED.
 - JACKET INSULED: YES
 8. THE VERNAL BELT MUST BE ON UNIT PROVIDED BY USER (BOST) OVER 360 DEGREES OF CIRCULAR CONTACT SURFACE IS SUFFICIENT OPTION.
 9. VENDOR MUST 100% INSPECT FOR CONTINUITY AND SHORTS.
PAGING OF 9A15 WITH WIRE TESTER ON MOUNT HAVE A FLAMMABILITY RATING OF V-0-1.

[illegible]