

BOSE® ControlSpace® GPIO card

- ⚠ CAUTION:** Installation should only be performed by trained service personnel.
- ⚠ CAUTION:** Make no modification to the system or accessories. Unauthorized alterations may compromise safety, regulatory compliance and system performance.
- ⚠ CAUTION:** ESD sensitive device. Handle with care.

1. Turn off and unplug the ESP.
2. Detach the top cover by removing the 8 screws.
3. Remove the bracket farthest to the right by unscrewing its two screws (save these screws). The GPIO card will replace this bracket. See *Figure 1*.
4. Attach one end of the ribbon wire to the GPIO connector.
5. Position the GPIO card in the chassis and screw the card into place. See *Figure 2*.

Figure 1

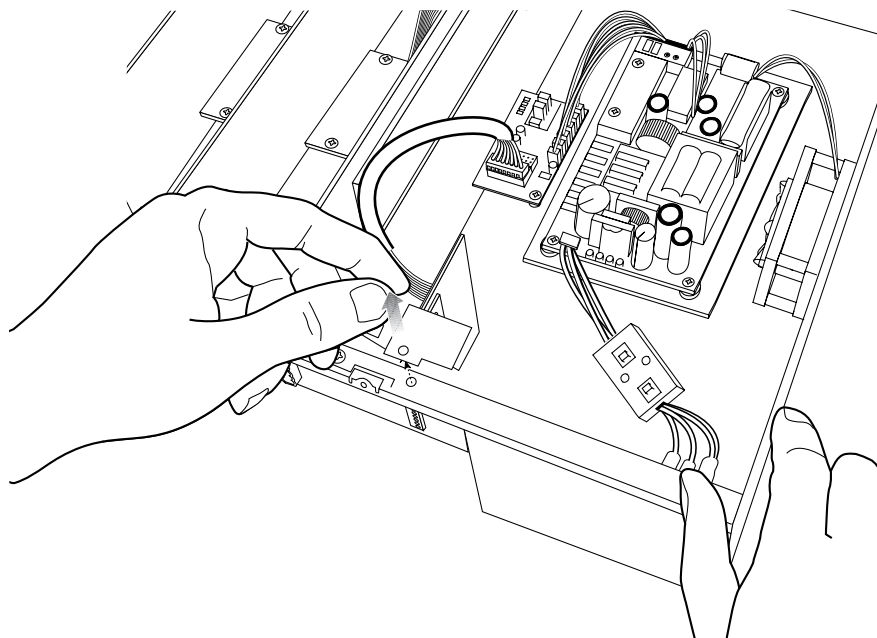
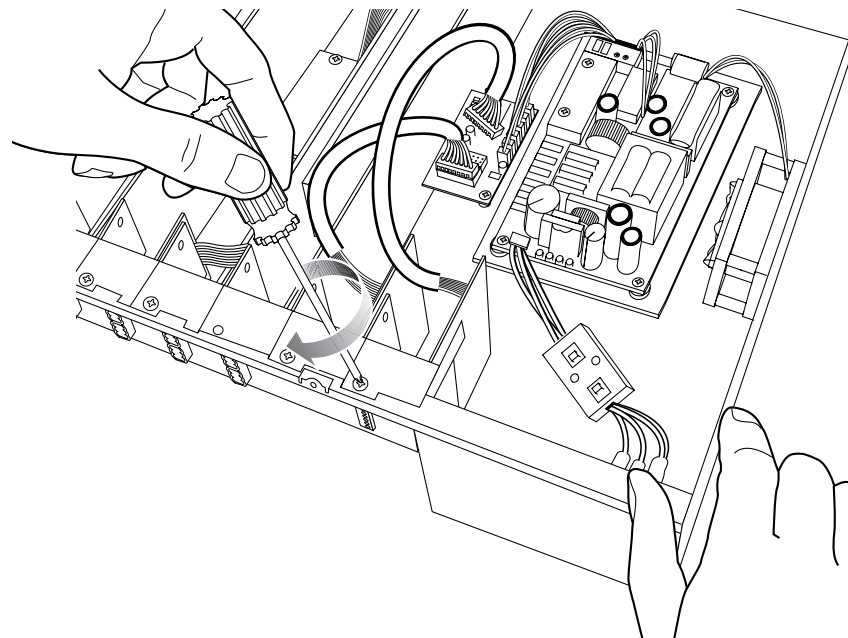


Figure 2



6. Attach the free end of the GPIO ribbon wire to the available connector located beside the first GPIO card connector on the motherboard. See *Figure 3*.
7. Reattach the top cover and fasten the 8 screws.
8. Plug in the power supply and turn on the ESP.
9. Use the ControlSpace® Designer™ software to verify the card was inserted correctly:
 - a) Press scan and confirm that the software detects the card.
 - b) If the card was installed correctly, right-clicking the ESP and displaying its properties will show that GPIO usage is in slot 1 and slot 2. See *Figure 4*.
10. If an error message appears, or the software does not properly detect the GPIO card, repeat the installation instructions. Be sure that the ribbon wire is completely pushed into both connectors.

Figure 3

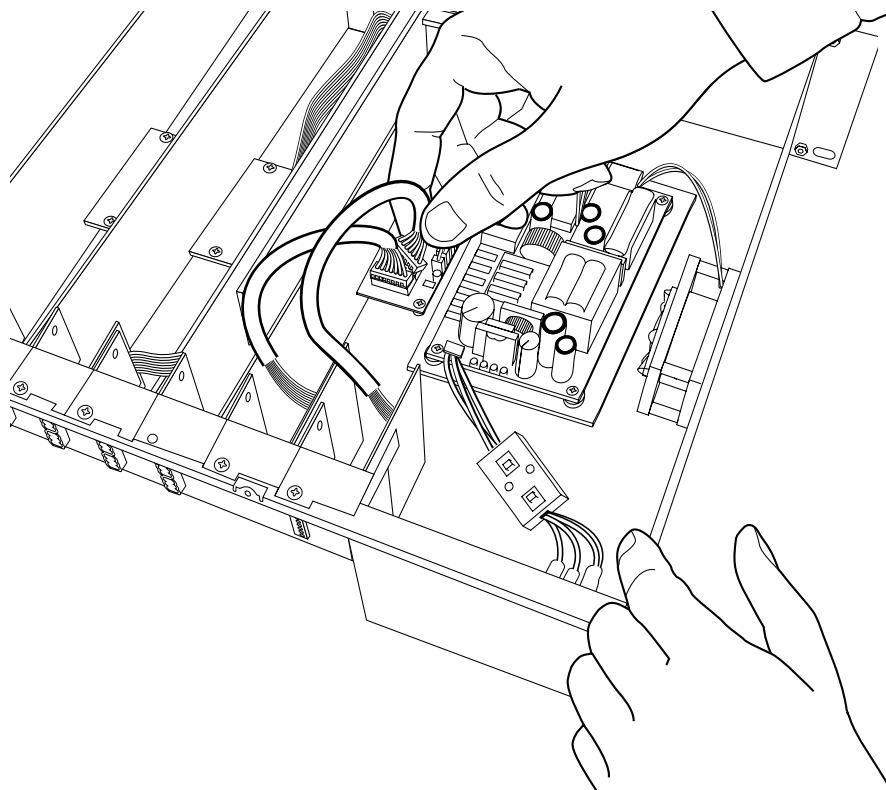
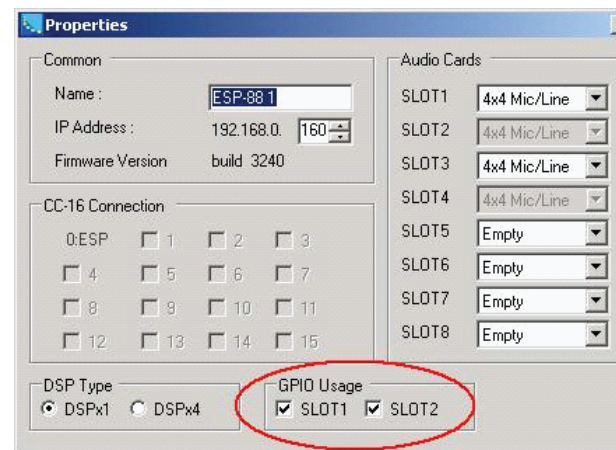


Figure 4



299788

BOSE
Better sound through research®

©2010 Bose Corporation, The Mountain Framingham,
MA 01701-9168 USA
AM299788 Rev.01
pro.bose.com