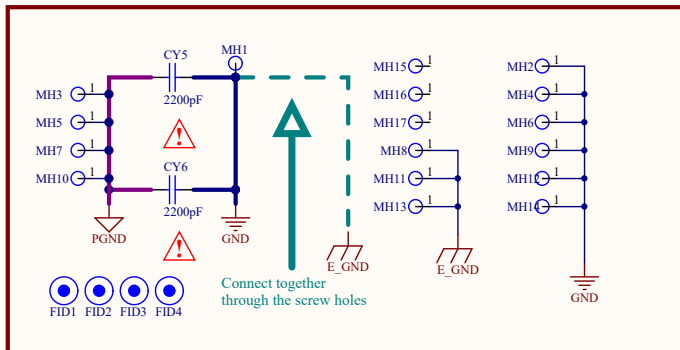
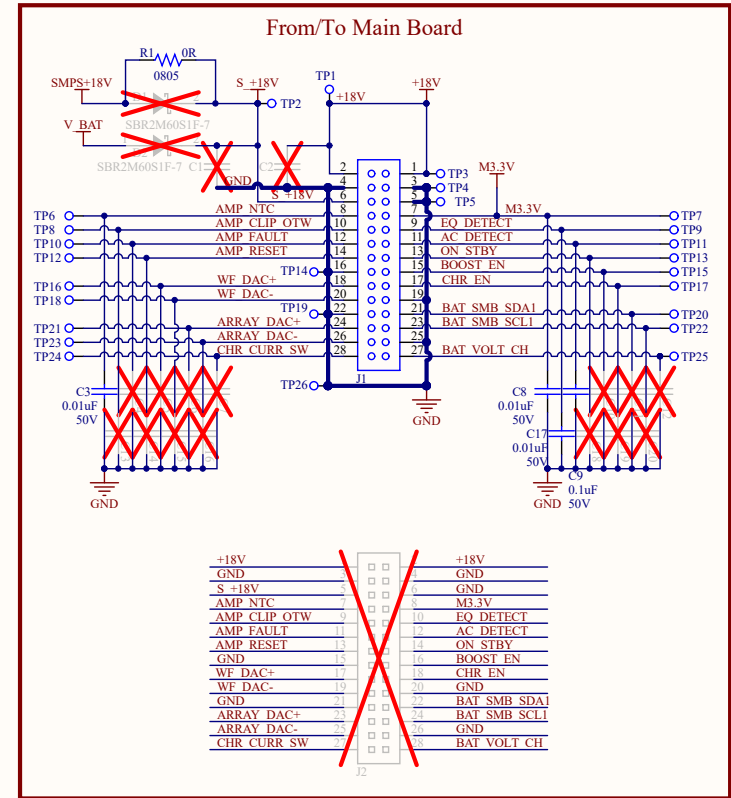
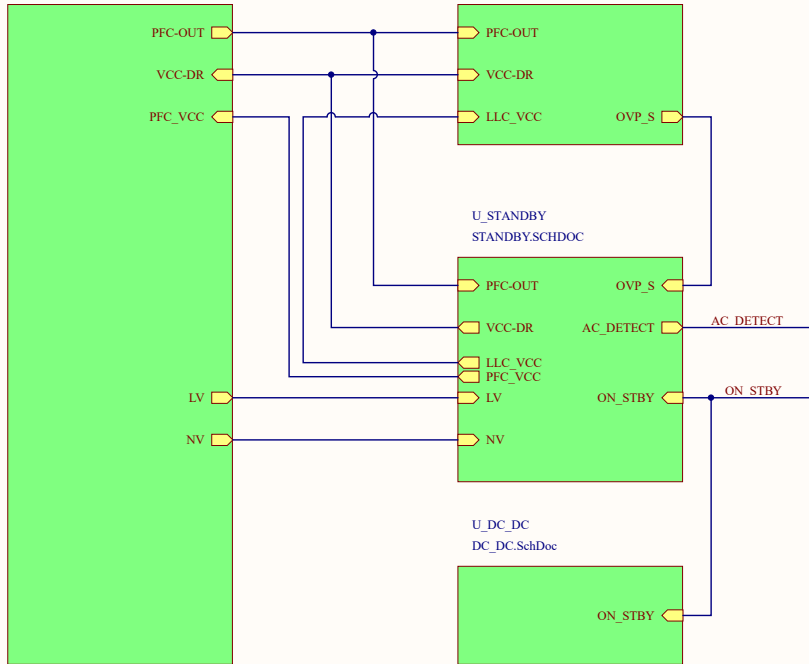


Grand Prix Power-Amp Board Block

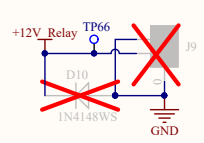
U_RECTIFIER & PFC
RECTIFIER & PFC.SCHDOC

U_LLC
LLC.SCHDOC

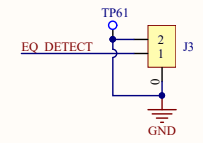
U_Battery Management
Battery Management.SchDoc



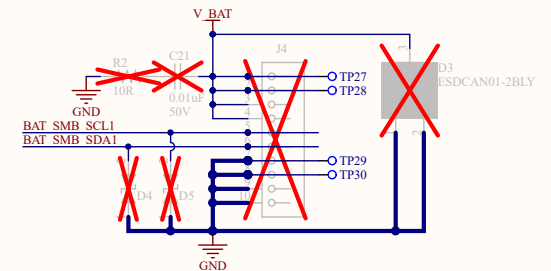
L32 To Relay control



For L8/L32 EQ Detect



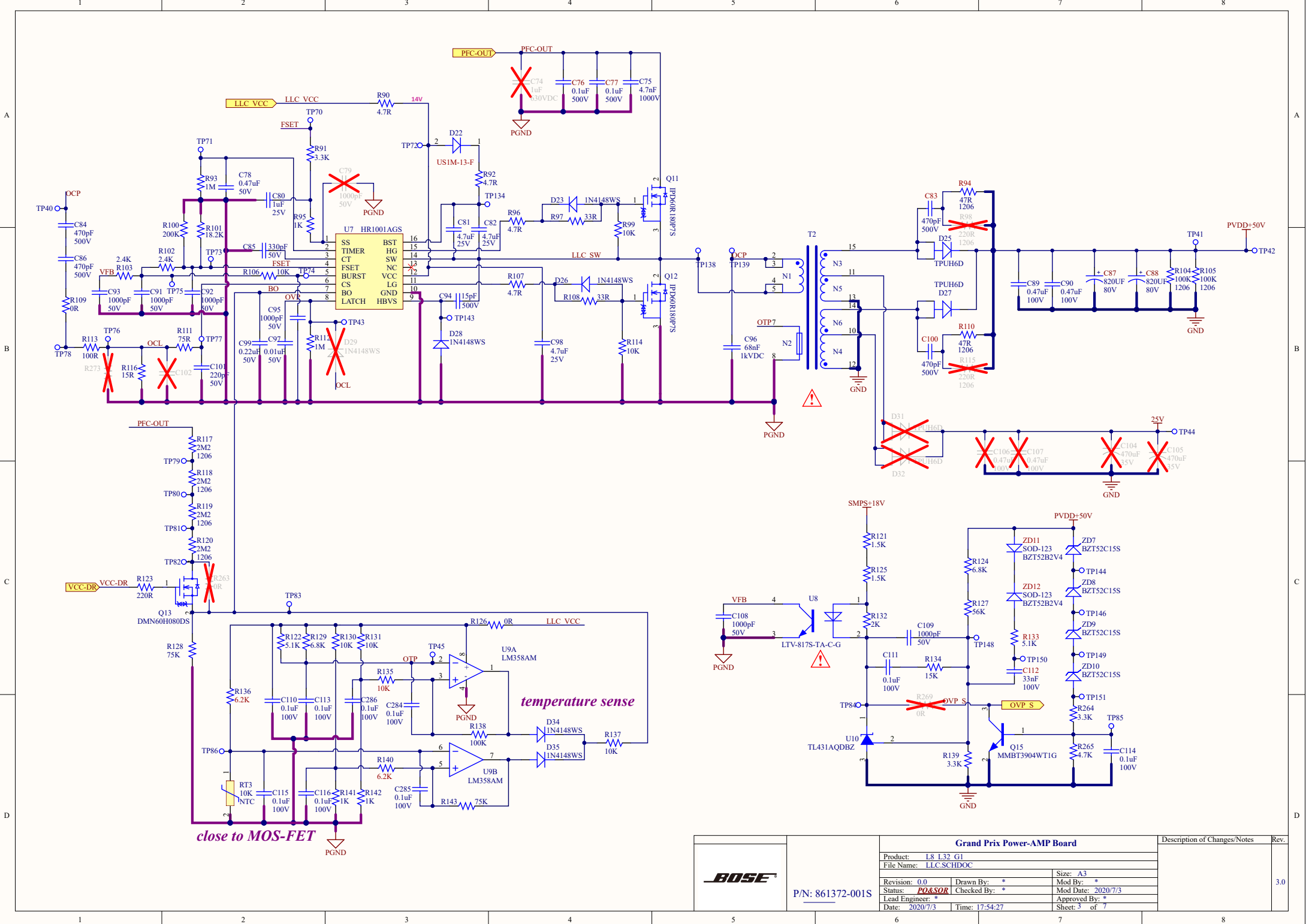
From/To BAT Package



Grand Prix Power-AMP Board			Description of Changes/Notes	Rev.
Product: L8 L32 G1				
File Name: SYSTEM BLOCK.SchDoc				
Revision: 0.0	Drawn By: *	Size: A3		
Status: POASOR	Checked By: *	Mod By: *		
Lead Engineer: *	Mod Date: 2020/7/3	Approved By: *		
Date: 2020/7/3	Time: 17:54:27	Sheet: 1 of 7		3.0



P/N: 861372-001S

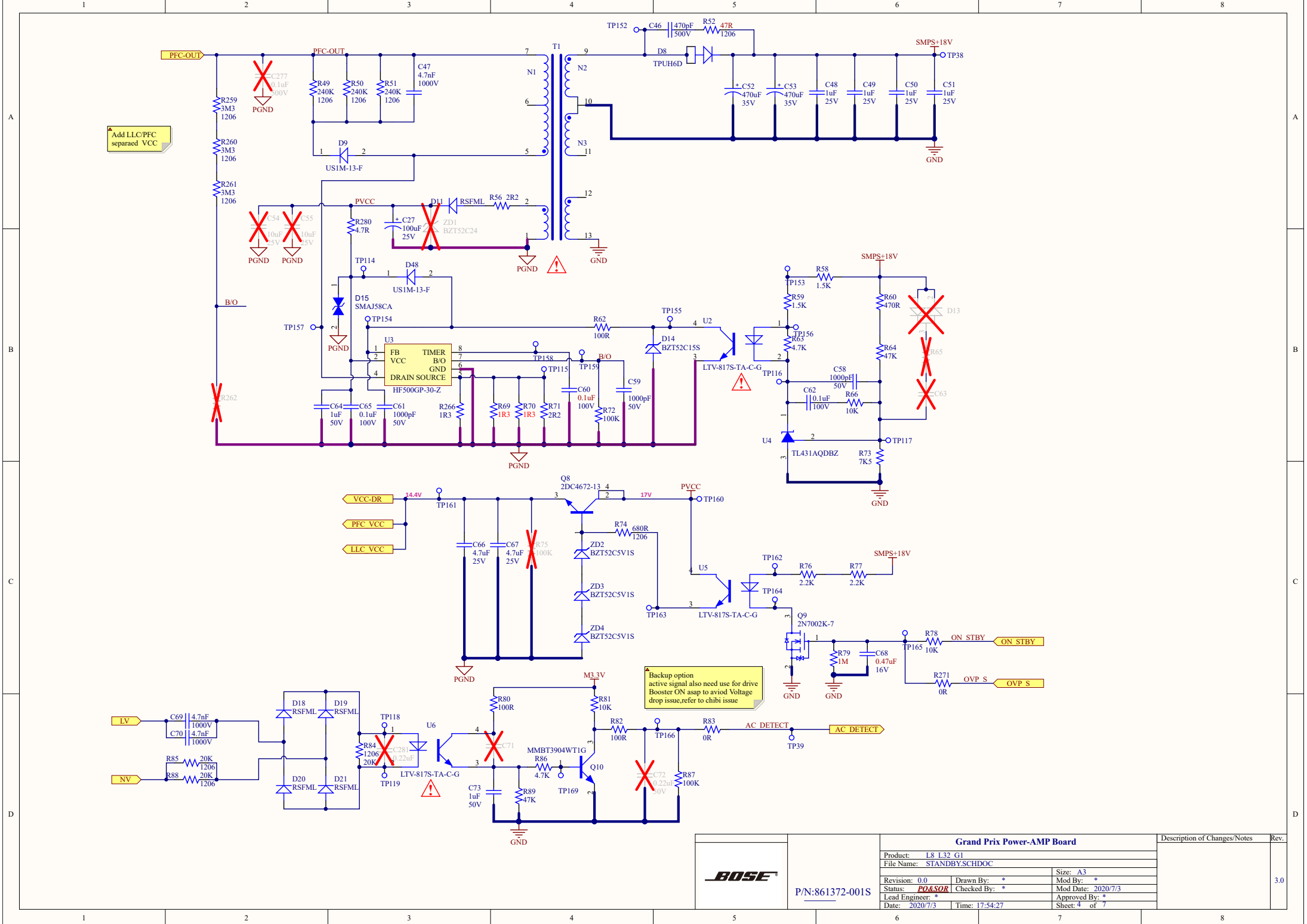


Grand Prix Power-AMP Board				Description of Changes/Notes	Rev.
Product: L8 L32 G1		File Name: LLC.SCHDOC			
Revision: 0.0	Drawn By: *	Size: A3	Mod By: *		
Status: POASOR	Checked By: *	Mod Date: 2020/7/3	Approved By: *		
Lead Engineer: *	Date: 2020/7/3	Time: 17:54:27	Sheet: 3 of 7		



P/N: 861372-001S

3.0

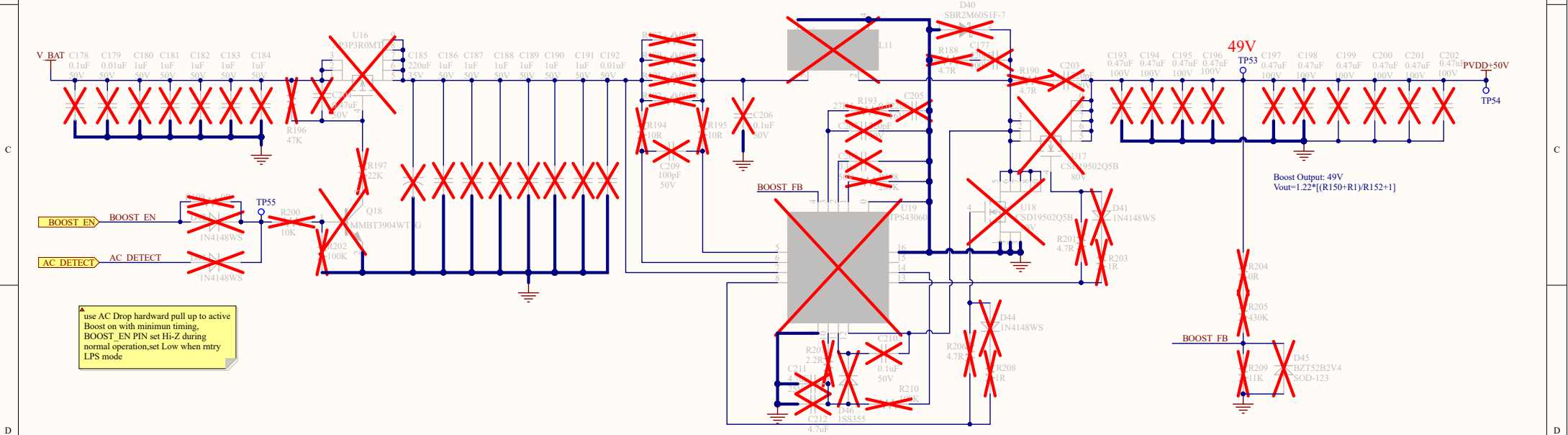
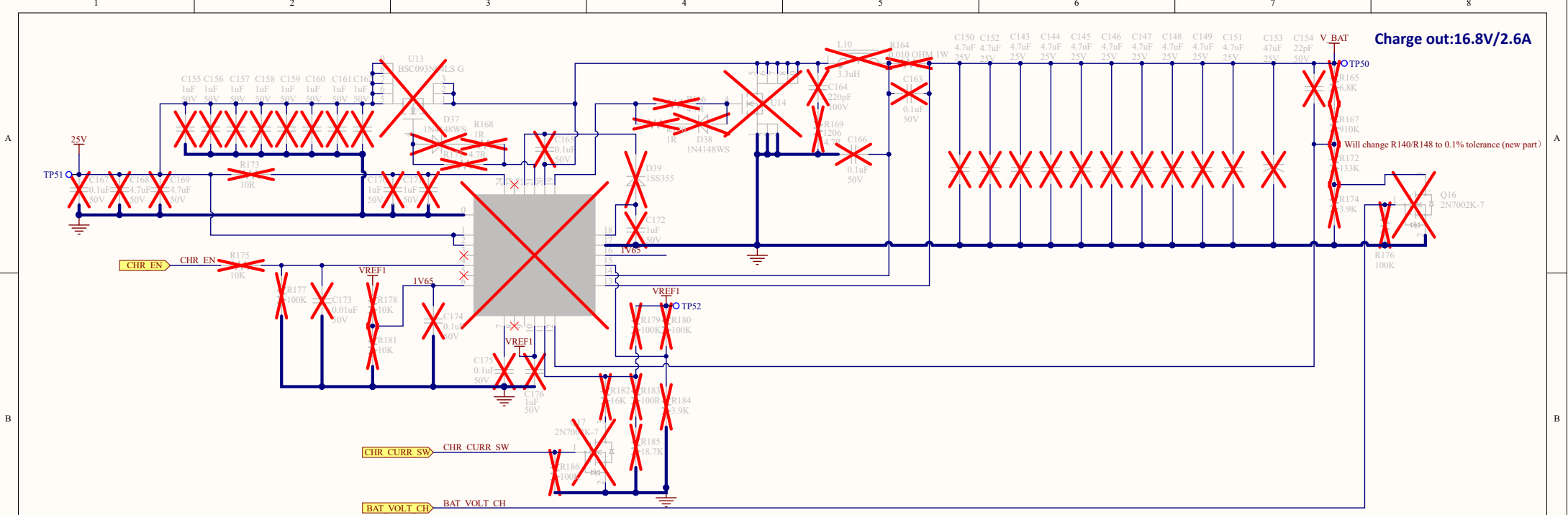


Grand Prix Power-AMP Board				Description of Changes/Notes	Rev.
Product: L8 L32 G1		File Name: STANDBY.SCHDOC			
Revision: 0.0	Drawn By: *	Size: A3	Mod By: *		
Status: PQ&SOR	Checked By: *	Mod Date: 2020/7/3	Approved By: *		
Lead Engineer: *	Date: 2020/7/3	Time: 17:54:27	Sheet: 4 of 7		



P/N:861372-001S

3.0

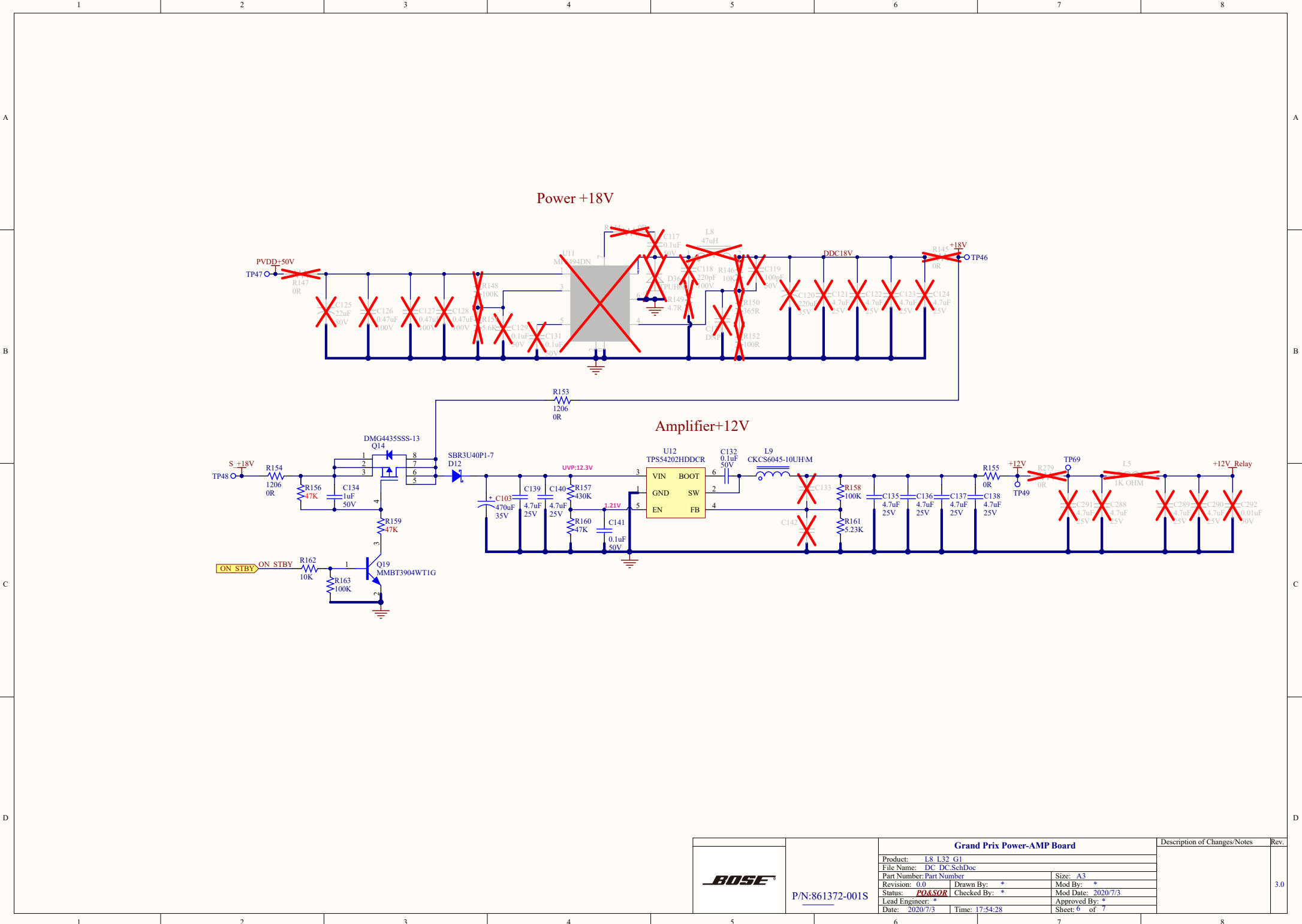


use AC Drop hardward pull up to active Boost on with minimum timing. BOOST_EN PIN set Hi-Z during normal operation, set Low when ntry LPS mode

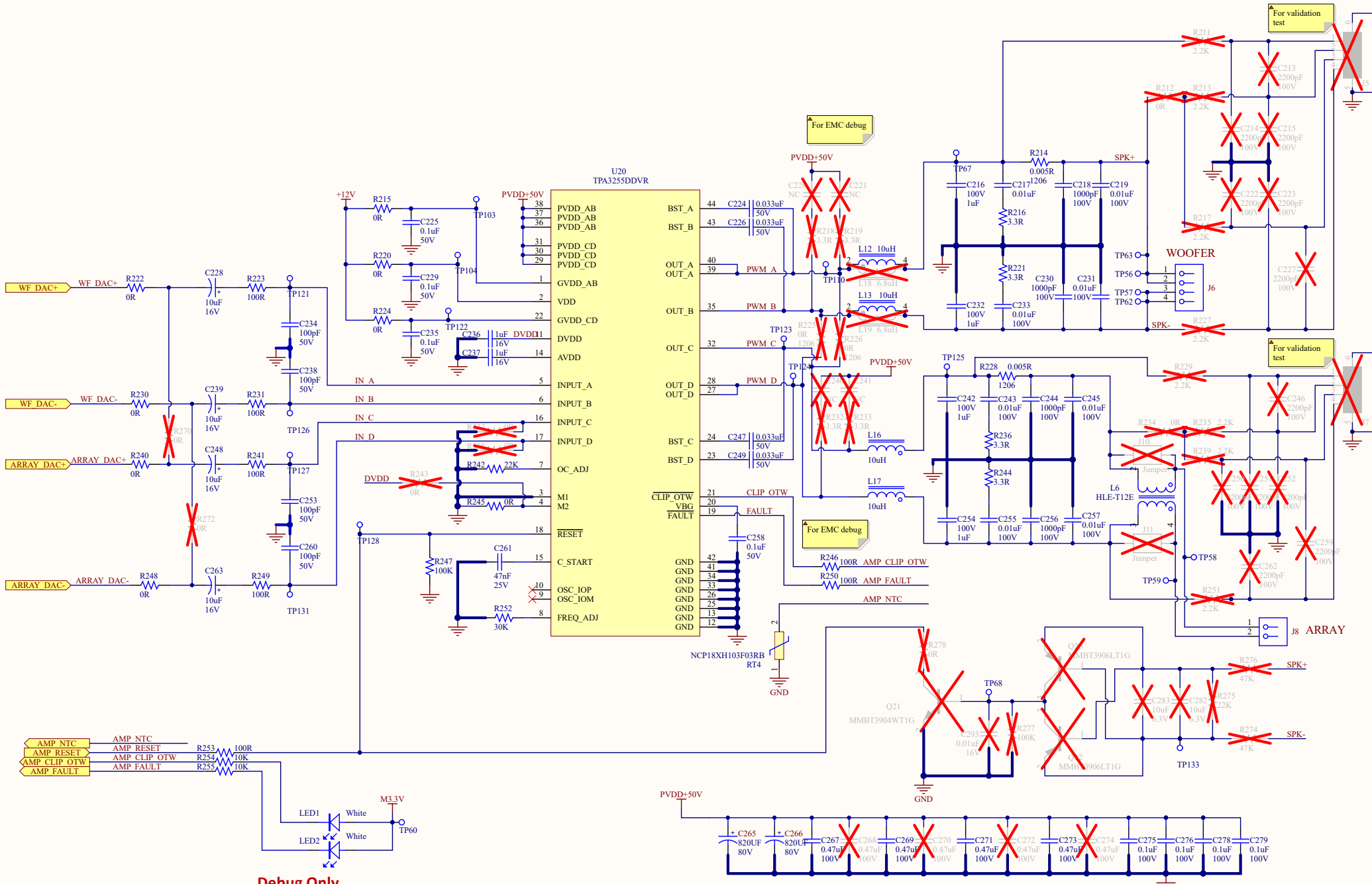
Grand Prix Power-AMP Board			Description of Changes/Notes	Rev.
Product: L8 L32 G1				
File Name: Battery Management.SchDoc				
Revision: 0.0	Drawn By: *	Size: A3		
Status: PQ&SOR	Checked By: *	Mod Date: 2020/7/3		
Lead Engineer: *	Approved By: *			
Date: 2020/7/3	Time: 17:54:28	Sheet: 5 of 7		3.0



P/N: 861372-001S



	Grand Prix Power-AMP Board			Description of Changes/Notes	Rev.
	Product: L8 L32 G1 File Name: DC DC.SchDoc Part Number: Part Number Revision: 0.0 Status: PQASQR Date: 2020/7/3 Time: 17:54:28				
P/N: 861372-001S					3.0



Debug Only

Grand Prix Power-AMP Board				Description of Changes/Notes	Rev.
Product: L8 L32 G1		File Name: Amplifier.SchDoc			
Revision: 0.0	Drawn By: *	Size: A3	Mod By: *		
Status: PO&SOR	Checked By: *	Mod Date: 2020/7/3	Approved By: *		
Date: 2020/7/3	Time: 17:54:28	Sheet: 7 of 7			



P/N: 861372-001S

3.0