

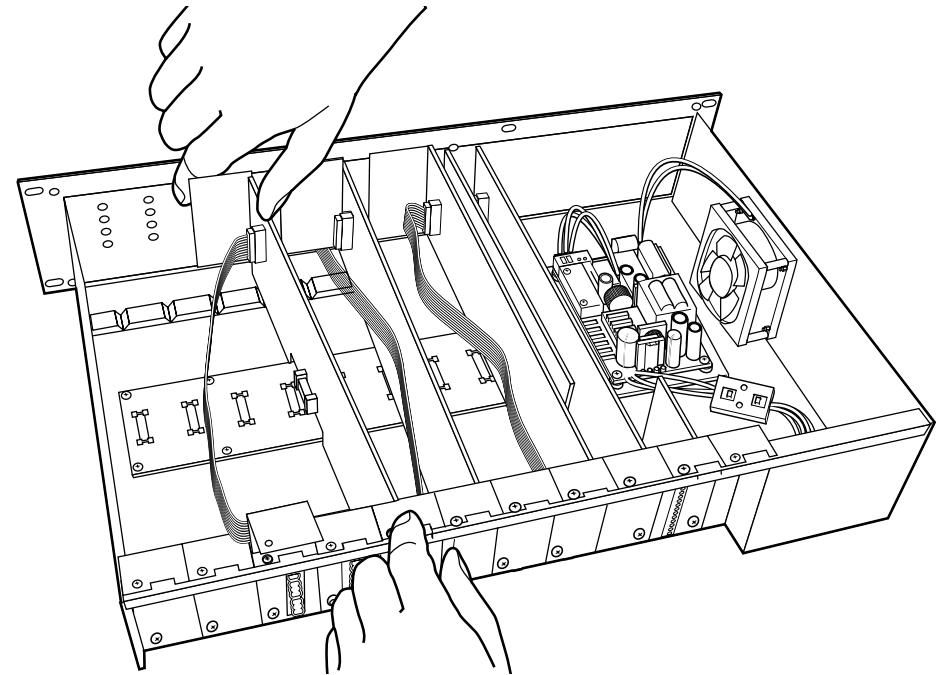
- ⚠ CAUTION:** Installation should only be performed by trained service personnel.
- ⚠ CAUTION:** Make no modification to the system or accessories. Unauthorized alterations may compromise safety, regulatory compliance and system performance.
- ⚠ CAUTION:** ESD sensitive device. Handle with care.

1. Turn off and unplug the ESP
2. Detach the top cover by removing the 8 screws.
3. Remove two brackets from adjacent empty slots from slots 5-8 by removing the four screws, two from each bracket (save these screws). The 4x4 mic/line input/output card will replace these brackets.

Note: The 4x4 mic/line input/output card occupies 2 adjacent slots. The main card must be inserted into an odd numbered slot (1, 3, 5 or 7).

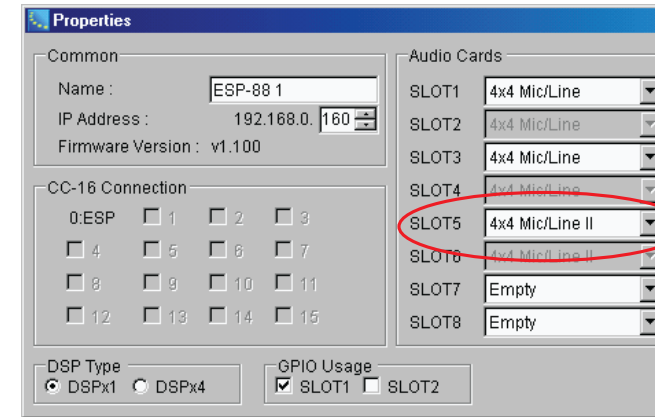
4. Attach the free side of ribbon wire from the 4x4 Out module to the larger input card's connector.
5. Position the card in the chassis. Be sure to align the card's LEDs with the holes in front of the chassis, and make sure the connector on the side of the card is aligned with the connector on the motherboard. Use the black guide on the bottom of the case to direct the card using the grooves.
6. When the connector on the card is aligned above the connector on the motherboard, press gently to mate the connectors.
7. Screw both parts of card into place.
8. Fasten the LED PCB to the front of the chassis with the screw included with the card.
9. Reattach the top cover and fasten the 8 screws.
10. Plug in the power supply and turn on the ESP.

Figure 1



11. Use the ControlSpace® Designer™ software to verify the card was inserted correctly:
 - a) Press scan and confirm that the software detects the card.
 - b) If the card was installed correctly, right-clicking the ESP and displaying its properties will show **4x4 Mic/Line II** in the correct slot in the ESP. See *Figure 2*.
12. If an error message appears, or the software does not properly detect the 4x4 mic/line input/output card, repeat the installation instructions. Be sure that the card is completely pushed into the motherboard connector, and that the card is properly aligned in the chassis.

Figure 2



306690

BOSE
Better sound through research®

©2010 Bose Corporation, The Mountain Framingham,
MA 01701-9168 USA
AM306690 Rev.01
pro.Bose.com