



BOSE®

FreeSpace® E-4 System

General Description

The Bose® FreeSpace® E-4 system is an integrated four-channel digital signal processor and 400-watt power amplifier for 70/100V business applications.

FreeSpace system Installer™ software, included with each unit, makes it easy to configure and service the E-4 system.

With capacity for four source inputs, including two Line In, one Mic/Line and one Page/Mic/Line, the E-4 system provides the inputs needed for most business music installations.

Its proprietary power-sharing amplifier dynamically shares 400 watts across 4 output channels ranging from as low as 1W to as high as 400W. For example, if you have a two-zone system that requires 5 watts in Zone 1 and 395 watts in Zone 2, the FreeSpace E-4 system distributes the power based on those needs.

As a single component, the E-4 provides the processing and control features required for one-to-four zone business music applications. These features include:

- **Auto Volume:** Offers dynamic control of individual zone volume levels to compensate for changes in background noise level. Auto Volume requires the use of the FreeSpace E-4 System Auto Volume Mic Kit.
- **Scheduling:** Allows programming of the E-4 system for automated on/off, volume, and source changes according to time of day or day of week.
- **Opti-Voice® paging:** Provides the appropriate sound level regardless of variations in speech projection.
- **Source Leveling:** Automates system compensation for variations in source input levels.
- **Dynamic Equalization:** Maintains tonal balance at all listening levels.

...continues inside

Technical Information

Power Amp Specifications

Power Output

Total shared power available for all channels: 400W

Maximum power per channel: 400W

Output Configurations

70.7V or 100V nominal

Frequency Response

20 Hz to 20 kHz \pm 3dB

Channel Separation¹

>70dB @ 1 kHz

THD¹

<1.0% at rated power, 0.1% at half rated power

Signal-to-Noise Ratio¹

>97dB, A-weighted

Slew Rate

20V/ μ s

DSP Specifications

Sample Rate

44.1 kHz

A to D Conversion

24-bit, 128x oversampling

D to A Conversion

24-bit, 128x oversampling

Front Panel Indicators

and Control Connections

Amp Output Signal Indicators

Zone 1 – 4: dual-color LED

Source Input Signal Indicators

Source 1 – 4: dual-color LED

Other Indicators

System Status: dual-color LED

Direct Input: yellow LED

Standby Button: button

Standby Indicator: yellow LED

PC Input

USB connector (for future use)

Rear Panel Inputs, Outputs, and Controls

Audio Inputs

Line Level Inputs

Type: Unbalanced RCA connectors summed to mono

Sensitivity: -20 dBV to +20 dBV

Impedance: 25K Ohms

Input Clip Level: +17 dBV

Mic Level Inputs

Type: Balanced Euroblock connectors

Sensitivity: -60 dBV to 0 dBV

Impedance: 3.3K Ohms

Input Clip Level: +17 dBV

Direct Input

Type: Balanced Euroblock connectors

Input Sensitivity: 0 dBV

Input Impedance: 2.5K Ohms

Input Clip Level: +6 dBV

Sense Mic Inputs

ZONE 1 – 4: Euroblock connector

Control Connections

Wall Plate Zone 1 – 4: RJ45 connector

Remote On/Off Input: Euroblock connector

PC Input: RS-232 connector

Power Amplifier Outputs (70V or 100V only)

Zone Out 1 – 4: Inverted Euroblock connector

Audio Outputs

Music on Hold/PBX Output:

Euroblock connector

Zone 4 – Line Out: Euroblock connector

connector

Output Configuration

70V or 100V: switch

AC Power Consumption

60W or less at idle

200W with musical program

600W at maximum continuous rated power (1 kHz, sine wave input) 70V or 100V mode

...continues inside

¹Tested with AES 17 low-pass filter.

Technical Information...continued

Power Requirements ($\pm 10\%$)

120 VAC/50-60 Hz
220 VAC/50-60 Hz
240 VAC/50-60 Hz
100 VAC/50-60 Hz

Fusing/Protection

120V: T6.25A, 250V rated
240V: T3.15A, L250V

Size (H x W x D)

5.25" (3U) x 17.25" x 15.5"
(13.3 cm x 43.8 cm x 39.4 cm)

Weight

30 lb (13.6 kg)

Enclosure Construction

Steel chassis designed for rack or shelf mounting

E-4 System Engineers' and Architects' Specifications

The system shall use a digital signal processing architecture running at a 44.1 kHz sample rate. The frequency response shall be from 20 Hz to 20 kHz ($\pm 3\text{dB}$). The signal-to-noise ratio shall be greater than 100dB A-weighted.

The power amplifier section shall deliver 400W of maximum power with less than 1.0% THD from 20 Hz to 20 kHz ($\pm 3\text{dB}$). Channel separation shall be $>70\text{dB}$, 20 Hz to 20 kHz.

The system shall consume power of 60 watts or less at idle, 200 watts with musical program, 600 watts at maximum continuous rated power (1 kHz, sine wave input) 70V or 100V mode.

The system shall run the following algorithm and controls:

- Input Gain
- Input Trim
- Source Leveling
- Mic/Line/Page Assignment
- Opti-Voice® paging
- Signal Routing
- Auto Volume Setup
- Scheduling
- Dynamic EQ
- Music on Hold
- Room EQ
- Loudspeaker EQ for Bose® speaker products
- Output Level Control Scheduling
- Limiting
- System Diagnostics

The system shall weigh 30 lb (13.6 kg).

The system enclosure construction shall be a steel chassis designed for rack or shelf mounting.

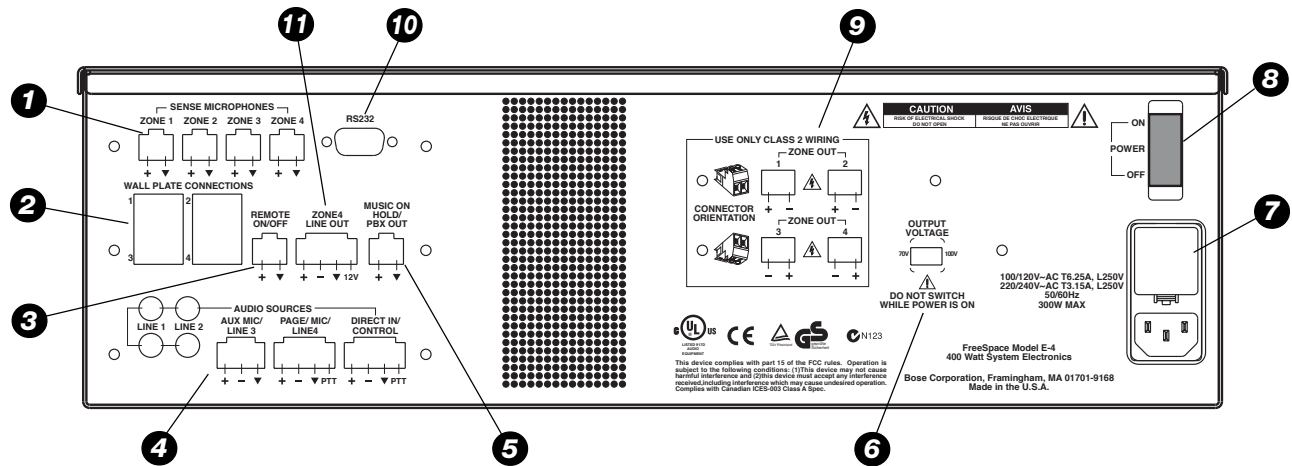
The system shall be the FreeSpace® E-4 system from Bose.

General Description

...continued

- Music on Hold: Provides an output for simple integration into a phone system.
- Room Equalization: Provides easy adjustment of tonal balance in each zone.
- Limiting: Protects loudspeakers from unwanted transient power loads.
- Signal Routing: Allows for an input source to be routed to any of the four amplifier outputs.
- System Diagnostics: Generates an extensive error log and includes an easy-to-replace memory module to minimize downtime.
- RS-232 for connection to a PC.
- Remote Power Sequencing: Provides a contact closure input.

Rear Panel Features



- 1** Sense Microphone Inputs
- 2** Wall Plate Connections
- 3** Remote On/Off Input
- 4** Audio Source Connections
- 5** Music on Hold
- 6** Output Voltage Switch (70/100V)
- 7** Fuse Box with Voltage Selector
- 8** Power On/Off Switch
- 9** Amplifier Outputs
- 10** RS-232 System Control PC Input
- 11** Auxiliary Output/Control

E-4 System Accessories

Optional Bose® accessories for the E-4 system

Accessory	Description	PC Codes
FreeSpace® E-4 System Rack Mount Kit	One pair of rack ears	PC029858
FreeSpace E-4 System User Interface Kit	Wall-mount keypad that fits into a standard single-gang junction box	PC029856 (US) PC029857 (Euro)
FreeSpace E-4 System Auto Volume Interface Kit	Wall-mount keypad that fits into a standard single-gang junction box	PC030101 (US) PC030102 (Euro)
FreeSpace E-4 System Auto Volume Mic Kit	One sensing microphone for stand-alone use or installation in a standard single-gang junction box	PC029859 (US) PC029860 (Euro)
FreeSpace E-4 System Auto Accessory Kit	Supplemental rear panel mating connectors and non-skid feet	PC030105

Safety and Regulatory Compliance

The FreeSpace E-4 system complies with UL6500 2nd edition, EN60065, and IEC60065:1998 (6th).

Warranty Information

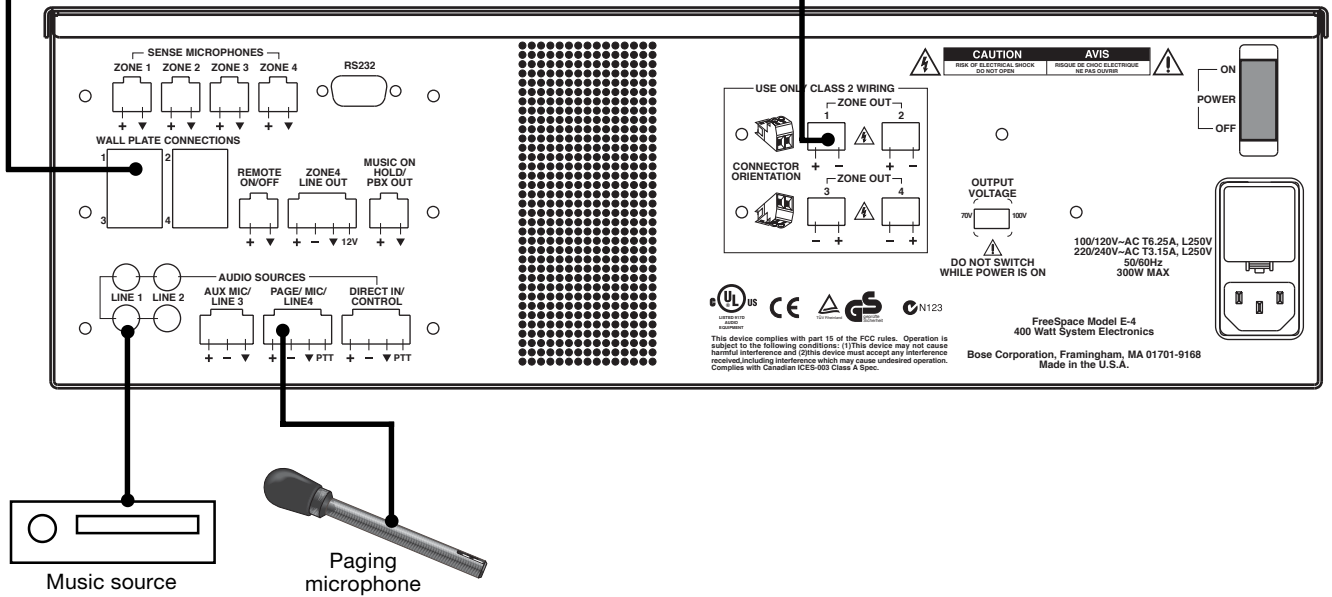
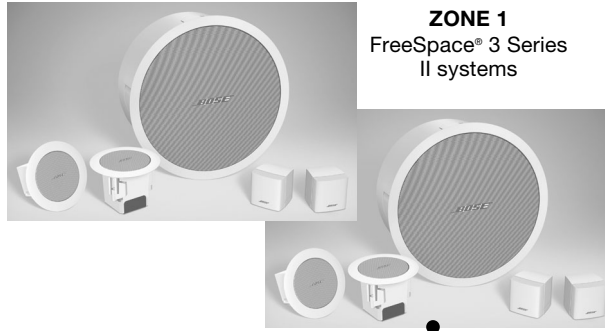
The FreeSpace E-4 system is covered by a five-year transferable limited warranty.

70/100V Single-Zone Configuration Example

ZONE 1
Standard User Interface



ZONE 1
FreeSpace® 3 Series II systems



Requires the following connections:

WALL PLATE CONNECTION 1	E-4 Standard User Interface
AUDIO SOURCE LINE 1	Music Source
PAGE/MIC/LINE 4	Paging Microphone
ZONE OUT 1	Two FreeSpace 3 Systems

70/100V Four-Zone Configuration Example

ZONE 1 – Dining Room

FreeSpace® 3 Series II systems

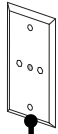
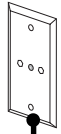


ZONE 2 – Bar

FreeSpace® 3 Series II system



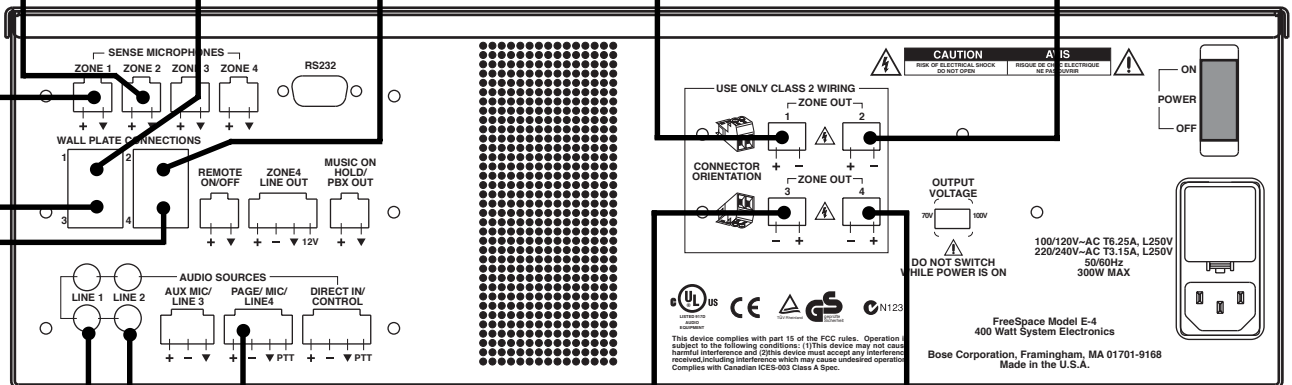
ZONE 1 Sense Microphone
ZONE 2 Sense Microphone



ZONE 1 Auto Volume User Interface



ZONE 2 Auto Volume User Interface

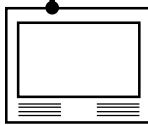


ZONE 3 Standard User Interface

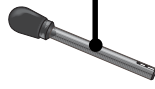


ZONE 4 Standard User Interface

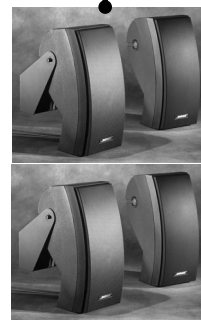
Music source



TV source



Paging microphone



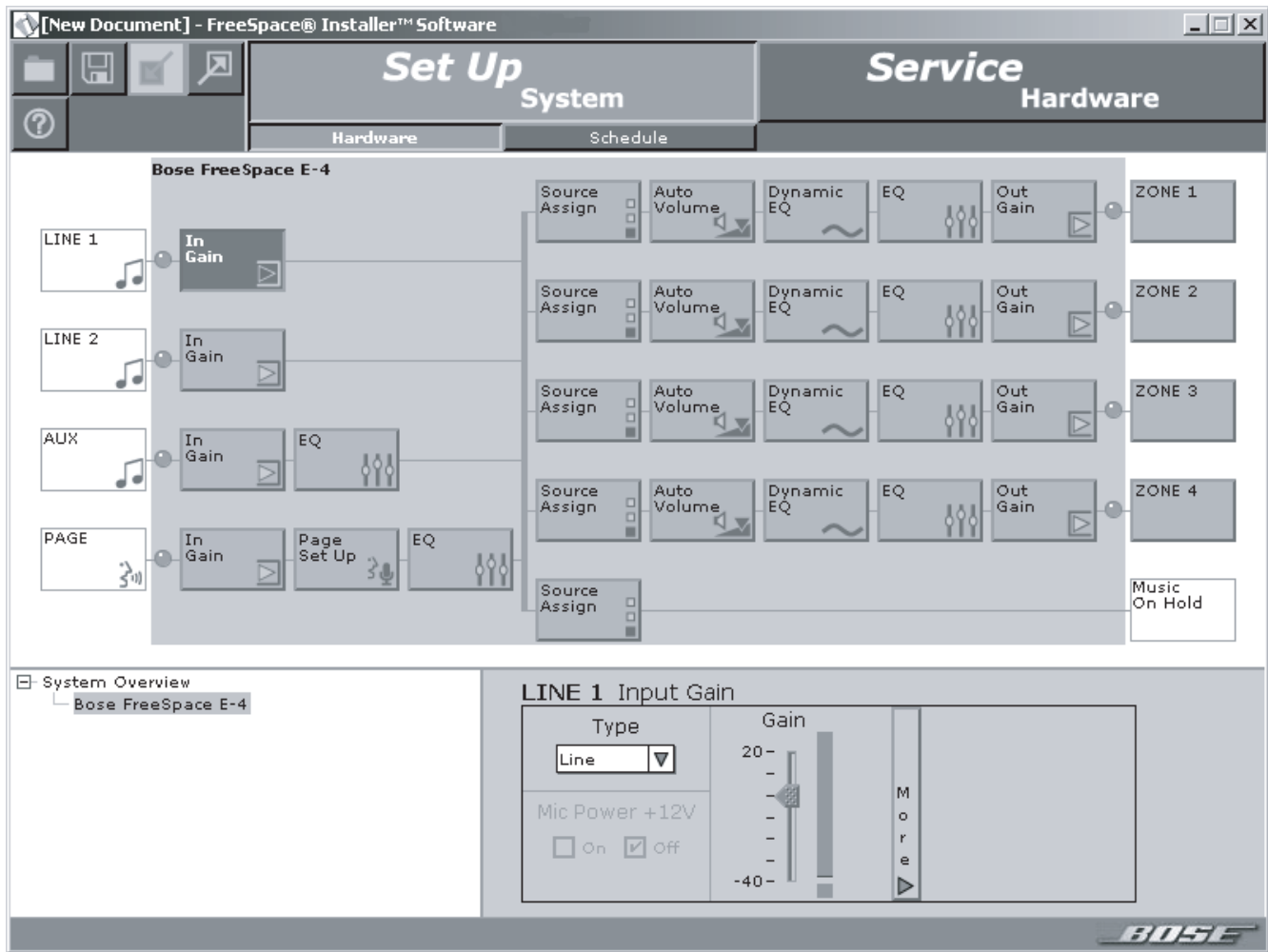
ZONE 3 – Patio
302™ A loudspeakers



ZONE 4 – Restroom
Model 16 loudspeakers

Requires the following connections:

SENSE MICROPHONE 1/2	E-4 Auto Volume Mic Kit
AUDIO SOURCE LINE 1	Music Source
AUDIO SOURCE LINE 2	TV Source
PAGE/MIC/LINE 4	Paging Microphone
WALL PLATE CONNECTION 1/2	E-4 Auto Volume Interface
WALL PLATE CONNECTION 3/4	E-4 Auto Volume Interface
ZONE OUT 1 – Dining Room	Two FreeSpace 3 Systems
ZONE OUT 2 – Bar	One FreeSpace 3 System
ZONE OUT 3 – Patio	Four 302 loudspeakers
ZONE OUT 4 – Restroom	Two Model 16 loudspeakers



Features and Control Settings

(accessible using FreeSpace® system Installer™ software):

- Input Gain
- Input Trim EQ
- Source Leveling
- Mic/Line/Page Assignment
- Opti-Voice® paging
- Signal Routing
- Auto Volume
- Scheduling
- Dynamic EQ
- Music on Hold
- Room EQ
- Loudspeaker EQ for Bose® speaker products
- Output Level Control
- System Diagnostics

System requirements for *Installer* software:

- Hardware
 - Minimum 200 MHz Pentium®-based PC (400 MHz recommended)
 - 128MB free RAM (256MB recommended)
 - 16-bit audio sound card
 - 4x CD-ROM
 - 50MB free internal hard disk space
- Operating System(s)
 - Windows 98, Windows NT 4.0, Windows 2000, Windows ME
- Display
 - 800 x 600 resolution, 16-bit color (32-bit color recommended)

For further information, contact Bose Corporation Professional Systems Division. Or visit us on the web at <http://pro.bose.com>.

The *Installer* software makes it easy to configure the E-4 system, using a Windows PC.

Installer software is a copyrighted application in Sound System Software (S™ software) from Bose. A copy of the *Installer* software is included in the box with each E-4 system.

BOSE®
Better sound through research®

©2003 Bose Corporation, The Mountain Framingham, MA 01701-9168
Subject to change without notice.
288149 AM Rev.02 PC031112 JN31022
English