

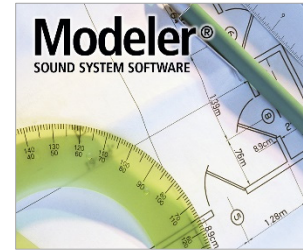


Modeler® sound system software

6.11.8

10 May 2021

Revision 1.0



General Updates

6.11.8

Corrects issue with symbols displaying incorrectly throughout the Modeler 6.11.7 user interface and menus. Intended symbols were being replaced by extra characters and question marks (?).

The affected symbols include the following:

- ° degree symbols
- D²RASTIc the “2” in D²RASTIc
- © copyright symbols
- ® registered symbols
- m³ “meters cubed”
- hyphens
- (*) MSA12X beam units

6.11.7

Support for DesignMax pendant loudspeakers

Support for AMM loudspeakers

70/100V CV file versions with tap settings added for the following loudspeakers: FreeSpace FS, DesignMax, AMU, EdgeMax

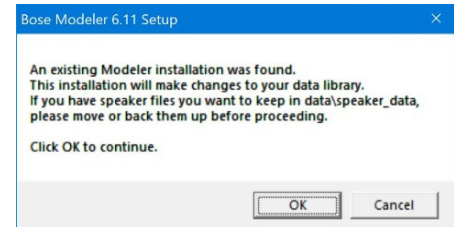
Text files of many loudspeaker database files updated for clarity

Loudspeaker folder structures updated for clarity when browsing new files (ArenaMatch, AMU, AM, FreeSpace FS, DesignMax)

Additional Notes

Modeler 6.11.7 updates the loudspeaker data files and loudspeaker data folder structures. When opening previous models after the update, you may have to substitute loudspeakers and drag the loudspeaker over again as the folder structure has changed for some product families.

As noted in the installation process, if you have custom loudspeaker data files you would like to keep and not have overwritten, manually back up your **data\speaker_data** folder before running the latest Modeler software installer.



If you are using a room EQ overlaid on the loudspeaker PEQ, we recommend doing both of the following for the most precise SPL calculations:

1. using the 8-ohm file instead of the 70/100V variants
2. manually updating the gain setting to the desired “tap setting equivalent” result in the output after the room EQ is applied

The 70V and 100V file versions do not allow you to manipulate gain further for the increase/decrease that room EQ can cause.