

SERVICE BULLETIN

Bulletin Number: 731419-B1

Product: F1 Model 812 Loudspeaker

Subject: Potential array latching issue due to foam compression issues.

Disposition: On all F1 Model 812 Loudspeakers that were built before 10/5/16 (DOM 6279) that are sent in for repair or remanufacturing, remove the foam using the following rework procedure.

Symptom: Speaker may not reliably latch in the C, J or reverse J positions.

Reason: Foam used in earlier production units may prevent consistent latch.

Solution: Perform the rework procedure below.

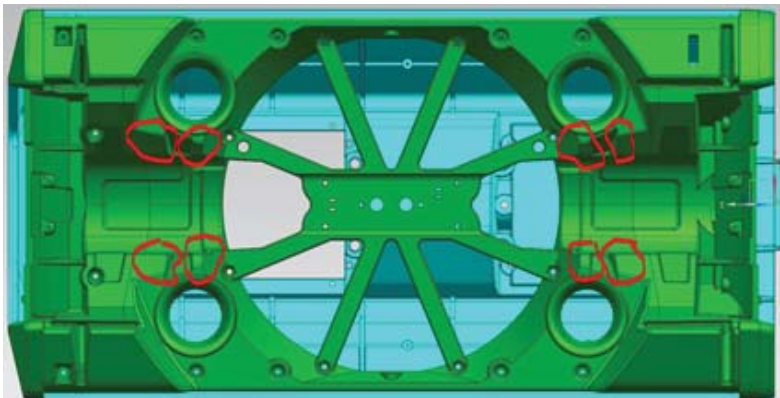
Materials List:

- Flashlight
- 4 piece Mini pick & hook set, or similar - <http://www.harborfreight.com/4-piece-pick-and-hook-set-66836.html> (see photo at right).
- Small Flexible metal ruler or similar.
- Black touch up paint and/or marker in case of minor damage to paint on grilles.

Optional: Additional replacement side grilles, Bose part number 625268-011S.

Rework Procedure:

1. Fully unpack unit.
2. Place unit on its back on a soft cushion on a flat surface to prevent damage during rework.
3. Adjust the array to the straight configuration.
4. Remove the side grilles. Using a flat plastic tool or the hook tool, move the grille sides away from the loudspeaker enclosure until the retaining tabs are clear of the enclosure. There are four retaining tabs per grille. Take care to not damage the loudspeaker enclosure or the side grille. Once the retaining tabs are clear, pull the side grille straight off from the front of the enclosure.
5. You will be removing the foam as shown below. The foam is located at two locations at the top of each port, for a total of eight.



SERVICE BULLETIN

While using a flashlight, use a long stainless steel ruler or similar tool to scrape the foam from the eight locations shown on the woofer baffle.



Take care to remove the foam completely. Do not allow the foam debris to fall behind the array and onto the woofer or elsewhere in the cabinet. The below photo shows the entire piece of foam after it has been removed.



6. Straighten any grille sections that may have gotten bent during removal. Re-install the right and left side grilles. Most grilles should be able to be re-used. Touch up any minor damage to the grille that occurred during removal.

If you cannot return a side grille to like-new condition, replace it with a new one, Bose part number 625268-011S.

7. Perform the test procedures located in the service manual to ensure there are no buzzes, rattles or other issues as a result of this rework.

8. Re-pack the loudspeaker, restoring it to new condition as a first quality, A-Stock unit.

Note: Refer to the F1 Model 812 Loudspeaker service manual, 731419-SM, located on the Bose service web site located at <http://serviceops.bose.com> for disassembly and test procedures.

