

# **BOSE** ControlSpace® CobraNet® Digital Audio Interface Card

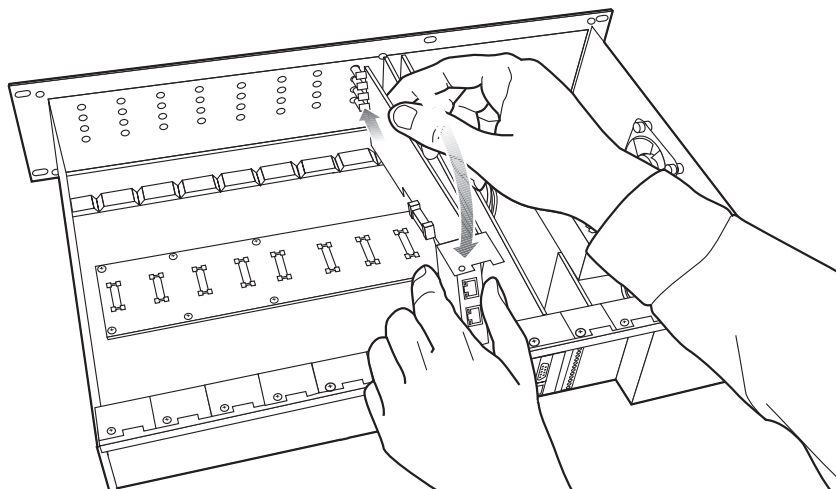
Installation should only be performed by trained service personnel.

**!** To comply with radiated emissions standards, shielded cat-5 cable is required.

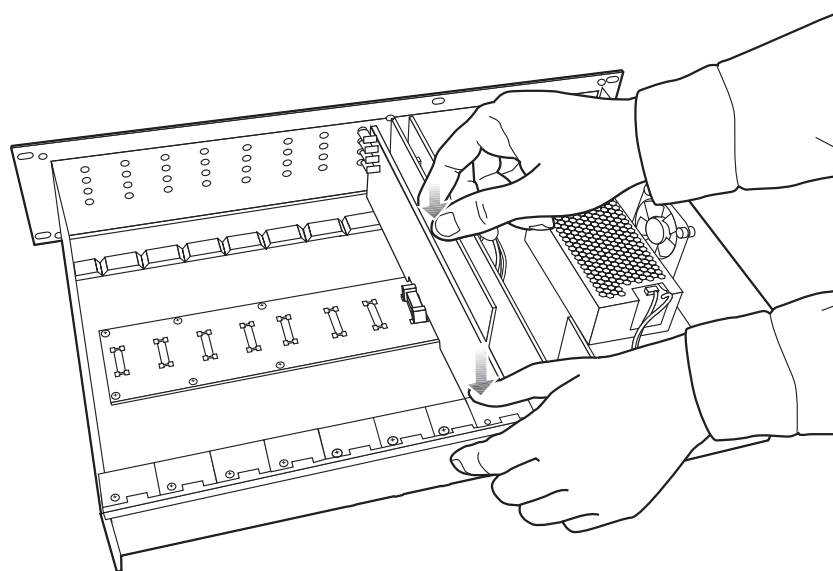
**IMPORTANT NOTE:** The ControlSpace CobraNet expansion card can only be installed in an ESP capable of accepting the CobraNet card. To identify if the ESP is compatible locate the serial number on the rear of the unit, and note the first six digits of the serial number. A compatible ESP-88 will have the first six digits of 050137, and a compatible ESP-00 will have 050138.

1. Turn off and unplug the ESP, and detach the top cover by removing the 8 screws.
2. Remove the two screws from an available expansion card blank panel. (Save the screws)
3. Be sure to align the card's LEDs with the holes in the front of the chassis, and make sure the connector on the side of the card is aligned with the connector on the motherboard. Use the black guide on the bottom of the case to direct the card using the grooves. See *Figure 1*.
4. When the connector on the card is aligned above the connector on the motherboard, press gently to mate the connectors. See *Figure 2*.
5. Screw the card into place using the two screws from the blank panel.
6. Reattach the top cover and fasten the 8 screws. Plug in the power supply and turn on the ESP-88.

**Figure 1**



**Figure 2**



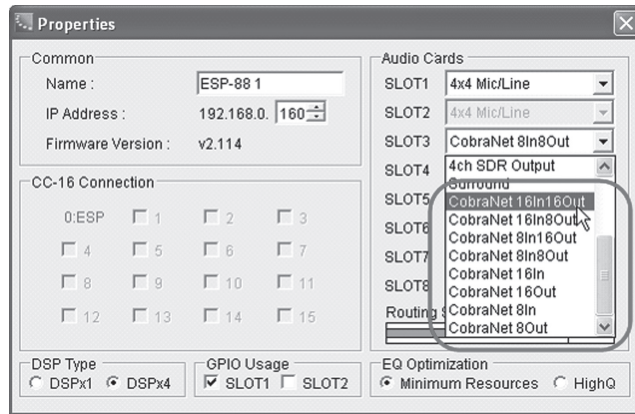
**!** **CAUTION:** ESD sensitive device. Handle with care.

7. Use the ControlSpace® Designer™ software, version 2.3 or newer, to verify the card was inserted correctly:
  - a) Press scan and confirm that the software detects the card.
  - b) If the card was installed correctly, right-clicking the ESP-88 and displaying its properties will show **CobraNet** in the correct slot in the ESP-88. From here you can select the CobraNet Input/Output configuration you will use. See Figure 3.

8. If an error message appears, or the software does not properly detect the CobraNet Digital Audio Interface Card, repeat the installation instructions. Be sure that the card is completely pushed into the connector, and that the card is properly aligned in the chassis.

CobraNet® is a trademark of Cirrus Logic Inc.

**Figure 3**



318527-0010

**BOSE**  
Better sound through research®

©2009 Corporation, The Mountain  
Framingham, MA 01701-9168 USA  
AM318527 Rev.00  
pro.Bose.com