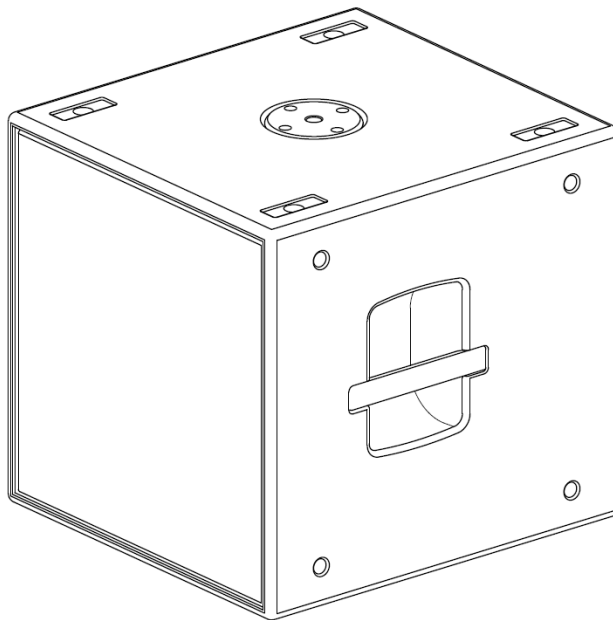


***BOSE***

# AMS115 Compact Subwoofer



# CONTENTS

Title	Page
<b>PRODUCT DESCRIPTION</b> .....	<b>3</b>
<b>SAFETY INFORMATION</b> .....	<b>3</b>
<b>ELECTROSTATIC DISCHARGE SENSITIVE (ESDS) DEVICE HANDLING</b> .....	<b>4</b>
<b>WARRANTY</b> .....	<b>4</b>
<b>PART LIST NOTES</b> .....	<b>4</b>
<b>PACKAGING PART LIST</b> .....	<b>5</b>
Figure 1. Packaging Exploded View .....	<b>5</b>
<b>MAIN ASSEMBLY LIST</b> .....	<b>6</b>
Figure 2. Main Assembly Exploded View .....	<b>7</b>
<b>DISASSEMBLY PROCEDURE</b> .....	<b>8</b>
Figure 3. Grille Screws Removal .....	<b>8</b>
Figure 4. Woofer Screws Removal .....	<b>8</b>
Figure 5. Woofer Cable Harnesses Removal .....	<b>8</b>
<b>FUNCTIONAL TEST PROCEDURE</b> .....	<b>9</b>
<b>SERVICE MANUAL REVISION HISTORY</b> .....	<b>10</b>

## PRODUCT DESCRIPTION


Designed for use with the AMM multipurpose loudspeakers, the AMS115 subwoofer extends system bandwidth to 35Hz.

A compact, high output design, the AMS115 utilizes a single 15-inch driver in a direct radiating, bass-reflex tuned enclosure the AMS115.

Integrated M20 thread pole-mount adaptor, handles and castor mounting points facilitate portable use, while M10 threaded inserts allow for flown installation where required.

See [www.pro.BOSE.com](http://www.pro.BOSE.com) for additional product information.

## SAFETY INFORMATION

Parts that have special safety characteristics are identified by the  symbol on schematics or by special notes on the parts list. Use only replacement parts that have critical characteristics recommended by the manufacturer.

**CAUTION:** The Bose® AMS115 Compact Subwoofer contains no user-serviceable parts. To prevent warranty infractions, refer servicing to warranty service stations or factory service.

### PROPRIETARY INFORMATION

THIS DOCUMENT CONTAINS PROPRIETARY INFORMATION OF BOSE CORPORATION WHICH IS BEING FURNISHED ONLY FOR THE PURPOSE OF SERVICING THE IDENTIFIED BOSE PRODUCT BY AN AUTHORIZED BOSE SERVICE CENTER, AND SHALL NOT BE REPRODUCED OR USED FOR ANY OTHER PURPOSE.

# Electrostatic Discharge Sensitive (ESDS) Device Handling


This unit contains ESDS devices. We recommend the following precautions when repairing, replacing or transporting ESDS devices:

- Perform work at an electrically grounded work station.
- Wear wrist straps that connect to the station or heel straps that connect to conductive floor mats.
- Avoid touching the leads or contacts of ESDS devices or PC boards even if properly grounded. Handle boards by the edges only.
- Transport or store ESDS devices in ESD protective bags, bins, or totes. Do not insert unprotected devices into materials such as plastic, polystyrene foam, clear plastic bags, bubble wrap or plastic trays.

## WARRANTY

The Bose AMS115 Compact Subwoofer is covered by a limited 5-year transferable warranty. Units that fail within 90 days of sale should be replaced.

## PART LIST NOTES

1. The individual parts located on the PCBs are listed in the Electrical Part List.
2. This part is referenced for informational purposes only. It is not stocked as a repair part. Refer to the next higher assembly for a replacement part.
3.  This part is critical for safety purposes. Failure to use a substitute replacement with the same safety characteristics as the recommended replacement part might create shock, fire and/or other hazards.

# PACKAGING PART LIST

AMS115 Compact Subwoofer (see Figure 1)

Item Number	Description	Part Number	Note
1	PAPER TRAY-TOP	-	
2	BAG, FOAM-FILM, .5 EPE, 667X130	-	
3	CARTON, SLEEVE	853683-0010	
4	PAPER TRAY-BOTTOM	-	

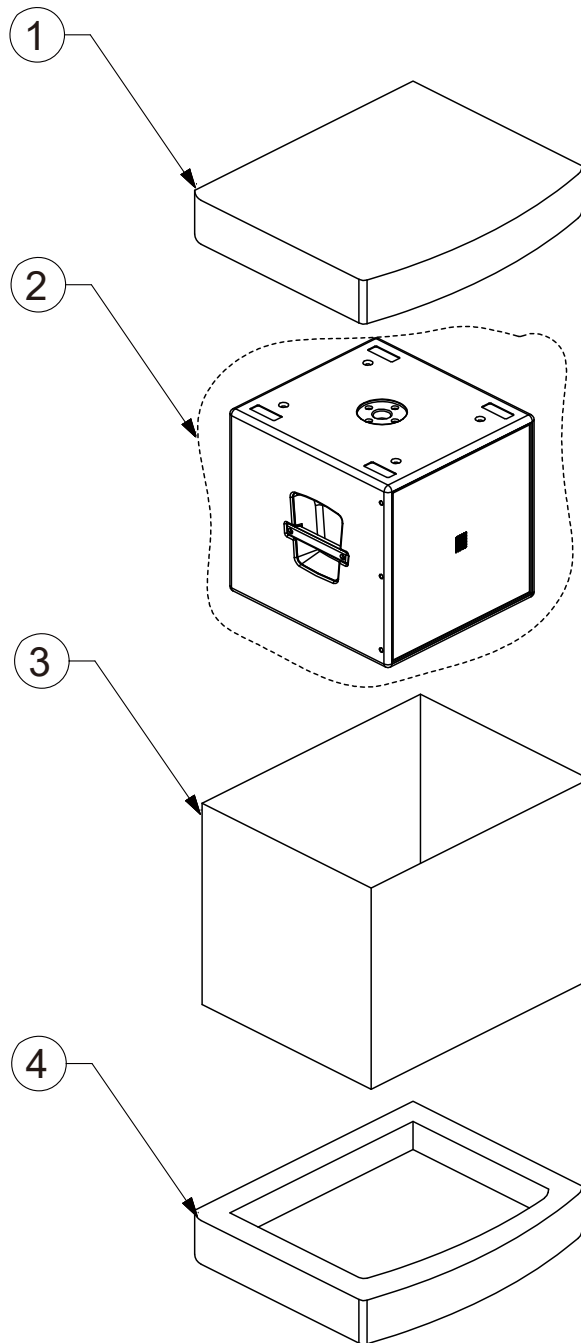


Figure 1. AMS115 Packaging Exploded View

# MAIN ASSEMBLY LIST

AMS115 Compact Subwoofer (see Figure 2)

Item Number	Description	Part Number	Note
1	ASSY, ENCLOSURE	-	
2	ASSY, GRILLE	855787-0110	
3	WOOFER	845741-0010	3 
4	CUP, HANDLE	-	
5	HANDLE, ALUMINUM	-	
6	GASKET, HANDLE CUP	-	
7	GASKET, POLE MNT	-	
8	GASKET, HANDLE	-	
9	FOOT, ENCLOSURE	-	
10	BRACKET SUPPORT, M10	-	
11	CGASKET, M10 SUPPORT BRKT	-	
12	GASKET, WOOFER	-	
13	POLE MOUNT	-	
14	ASSY, I/O	-	
15	LABEL, LEXAN, I/O	-	
16	LABEL, BOSE LOGO, I/O BOX	-	
17	LABEL, PRODUCT, I/O	-	
18	SCREW, M6, MACH, 50MM, LG, FH	-	
19	WASHER, M6, FLAT, 6.6	-	
20	WASHER M6 LOCK 6.5	-	
21	HEXNUT, M6X1.0PX5.0 THK	-	
22	SCREW, M10, MACH, 25MM LG, FH HEX	-	
23	WASHER, M5, FLAT, 5.5	-	
24	HEXNUT, M5X0.8PX4.0 THK	-	
25	SCREW, M5, MACH, 30MM, LG, SKT, HD	-	
26	SCREW, M8, MACH, 30MM, LG, FH	-	
27	SCREW, M3.5, THD FRM 12MM LG, PH	-	
28	SCREW, M6, MACH 35MM LG FH	-	
29	SCREW, M5, MACH, 22MM LG, BTN HD	-	

# MAIN ASSEMBLY EXPLODED VIEW

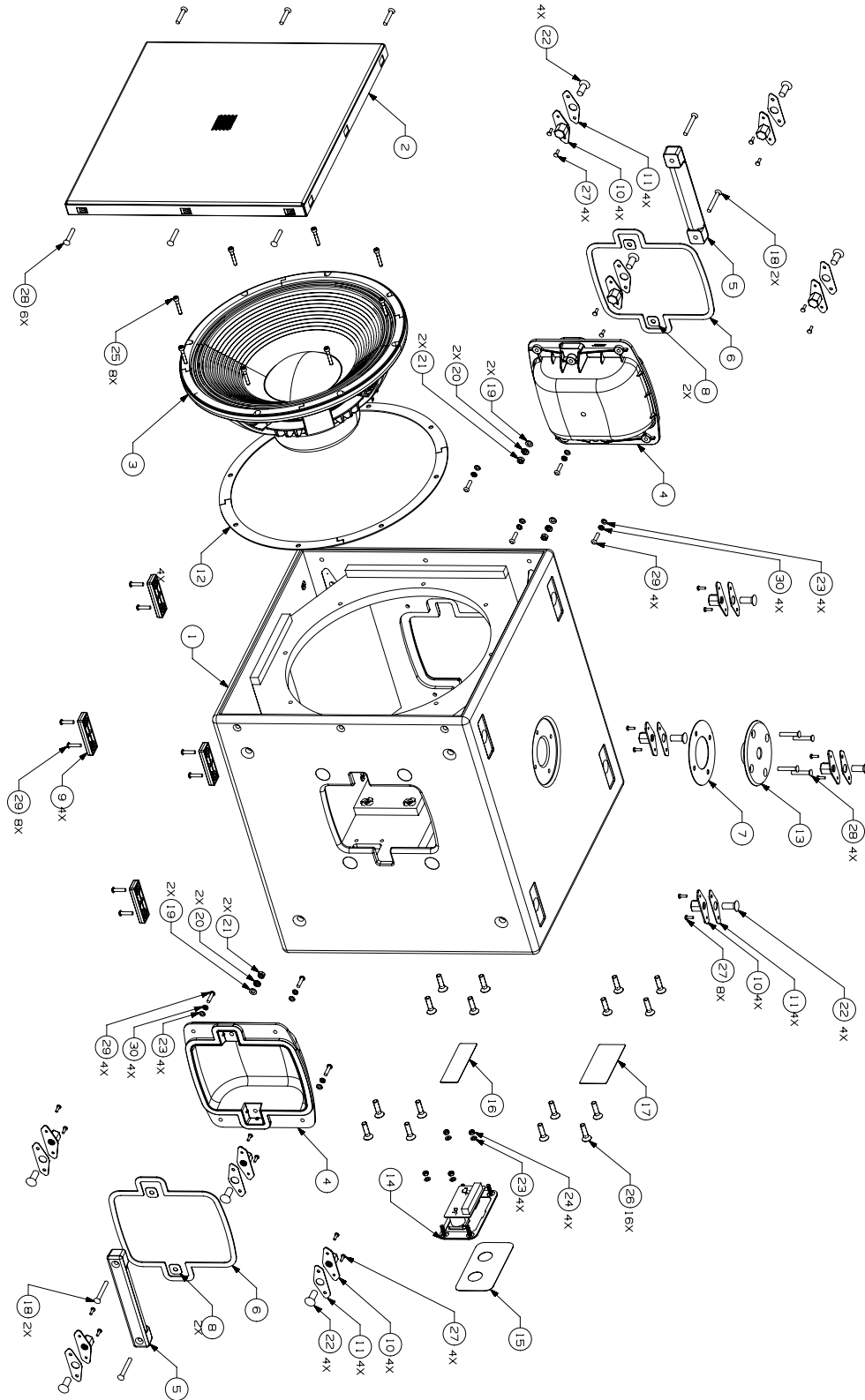


Figure 2. AMS115 Exploded View

# DISASSEMBLY PROCEDURE

## 1. Grille Removal

1.1 On the Enclosure of the unit, remove the 6 M6 screws (both sides) securing the Grille as indicated in Figure 3.

### Re-assembly Note:

The install torques of the Grille is around 20 +/-1 kgf\*cm.



Figure 3. Grille Screws Removal

## 2. Woofer Removal

2.1 Perform step 1.

2.2. Remove the 8 screws securing the Woofer as indicated in Figure 4.

**Re-assembly Note:** The install torques of the Woofer is around 20 +/-1 kgf\*cm.

2.3 Detach the 2 Cable harnesses from the Woofer by pressing the white fastener as indicated in Figure 5.

**Note:** Be careful When removing the Woofer because it is very heavy.

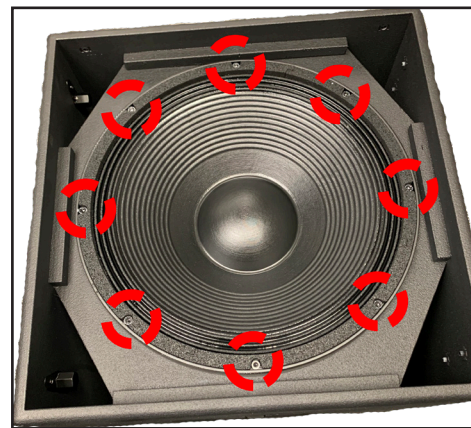


Figure 4. Grille Screws Removal

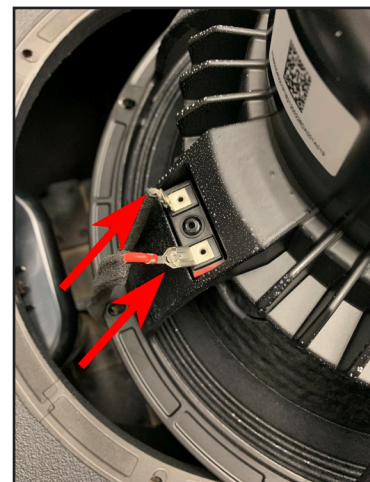


Figure 5. Woofer Cable Harnesses Removal



# FUNCTIONAL TEST PROCEDURES

## Required Equipment

- Audio Sweep Generator
- L2400 Power Amplifier

## 1. Air Leak Test

**1.1** Apply a 50 Hz, 10 Vrms tone signal to the unit's PARALLEL (left) input.

**1.2** Listen for any air leaks from sealed areas such as the Grille Assy and Cup Pole.

## 2. Buzz and Sweep Test

**2.1** Apply a 20 Vrms signal to the unit's PARALLEL (left) input.

**2.2** Sweep the generator from 40 Hz to 200 Hz, input sweep sine wave to power amplifier (Filter: none).

**2.3** Duration Time is 10s -10s and Listening Distance is 60cm.

**2.4** Listen for buzz, rub, or extraneous sounds. Localize and repair any buzz. Replace any Woofer that rubs or produces extraneous sounds.

# SERVICE MANUAL REVISION HISTORY

Date	Revision Level	Description of Changes	Changes Driven By	Pages (s) Affected
4/2021	00	Document released at revision 00	Initial Release	ALL

---

***BOSE***®  
***Better sound through research***®

Bose Corporation  
100 The Mountain Road  
Framingham Massachusetts USA 01701

Reference Number 843163-SM REV 00, 4/2021  
<http://serviceops.bose.com>