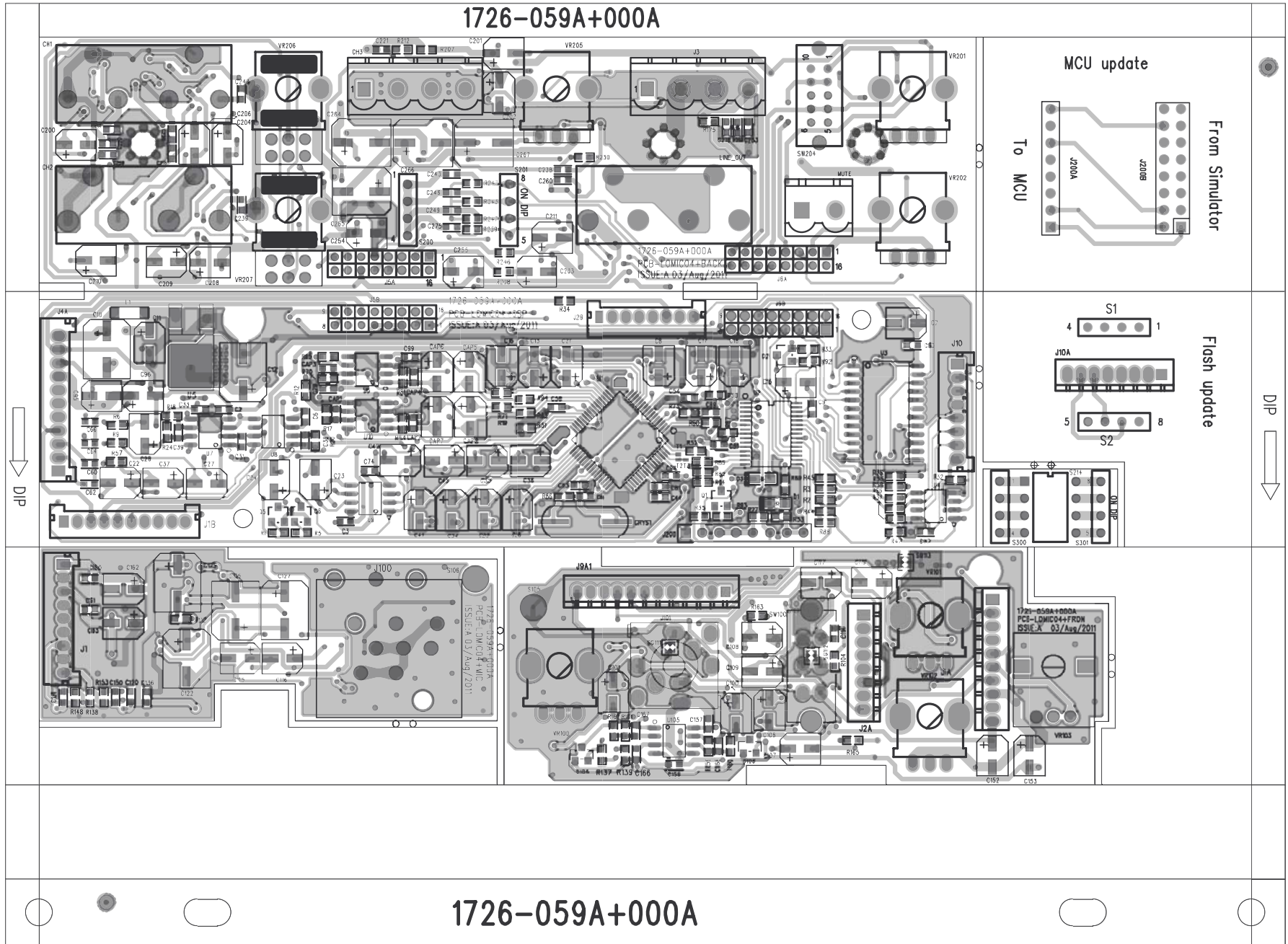


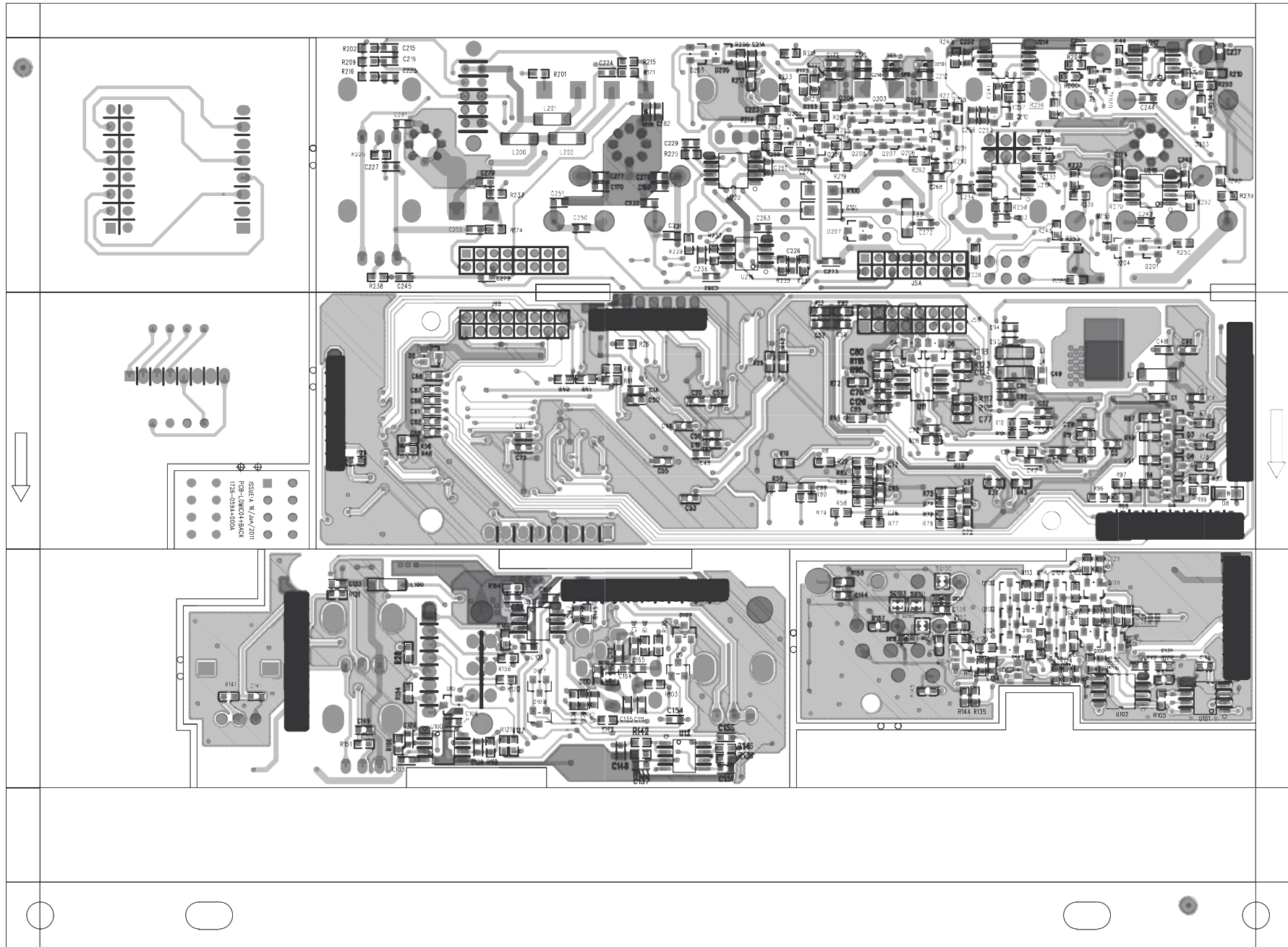
SMPS/Amplifier PCB (section A), Rear Panel I/O PCB (B), LED PCB (C), and AC Input PCB (D)  
 Top Side Etch and Silkscreen Layout Diagram





IZA-250 Rear Panel I/O PCB, DSP PCB, MIC Input PCB and 3.5mm Input Jack PCB  
Top Side Etch and Silkscreen Layout Diagram





IZA-250 Rear Panel I/O PCB, DSP PCB, MIC Input PCB and 3.5mm Input Jack PCB  
Bottom Side Etch and Silkscreen Layout Diagram