

ControlSpace® Designer™ software 4.3.1

Release Notes

31 July 2015

Revision: 1.0

General

This release of ControlSpace Designer software adds the following new features:

- [Remote Connection Support](#)
- [Variable Subnet Support](#)
- [Hardware Manager](#)
- [Mixers, Routers, and Selectors Updates](#)
- [Multi-channel Gain](#)
- [Text Notes](#)
- [Integrated support of Audio-Technica ATND-8677](#)

Remote Connection Support

A new 'Remote Connection' mode allows ControlSpace Designer to connect to ControlSpace devices on a different subnet or remotely via network bridging (i.e. VPN).

Note: Only the PC running ControlSpace Designer may be remote, and it can only connect to ControlSpace hardware on a single subnet at a time. Devices on the remote subnet cannot be 'discovered'- the IP address of at least one device (typically the RTC/Main) is required.

Variable Subnet Support

An 'Advanced Networking' option in the System menu enables support for subnets of different sizes (other than the standard /24) to better integrate with existing network infrastructures.

Note: CSD v4.3 supports only a single subnet at a time.

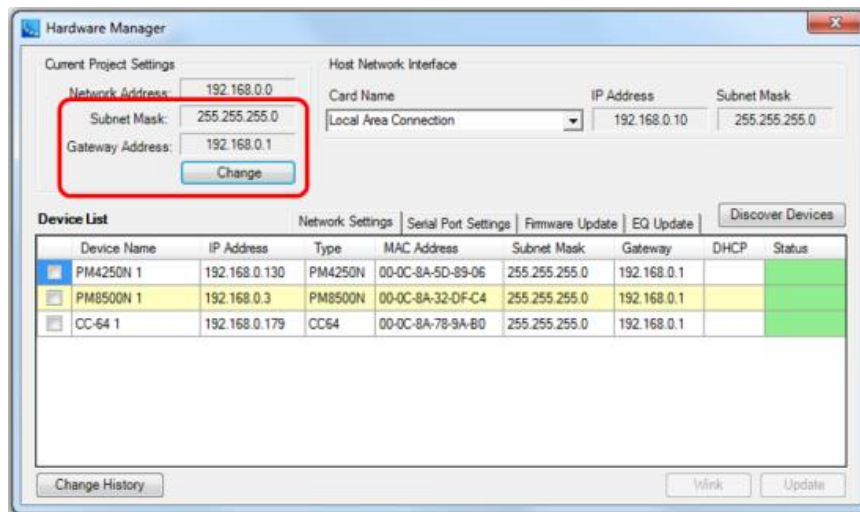


Figure 1 - Variable Subnet Support

Hardware Manager

A new Hardware Manager tool consolidates all the operations relating to ControlSpace hardware into a single form – with a ‘batch’ update facility to change network settings for multiple devices with a single action.

The Hardware Manager has three stacked regions:

- 1** At the top is the Current Project Settings area, where the project address and subnet mask is displayed. The current NIC settings are also displayed for comparison.
- 2** The middle region is occupied by the Device List which contains the list of devices that are discovered on the project network and is always visible. There are four tabs included in this list: the “Network Settings” tab, “Serial Port Settings” tab, “Firmware Update” tab, and “EQ Update” tab.
- 3** The lowest region, the Device Update area, is used to set device properties, but is only displayed for the “Network Settings” and “Serial Port Settings” Tab when a single item is selected in the device list that has properties the user can modify.

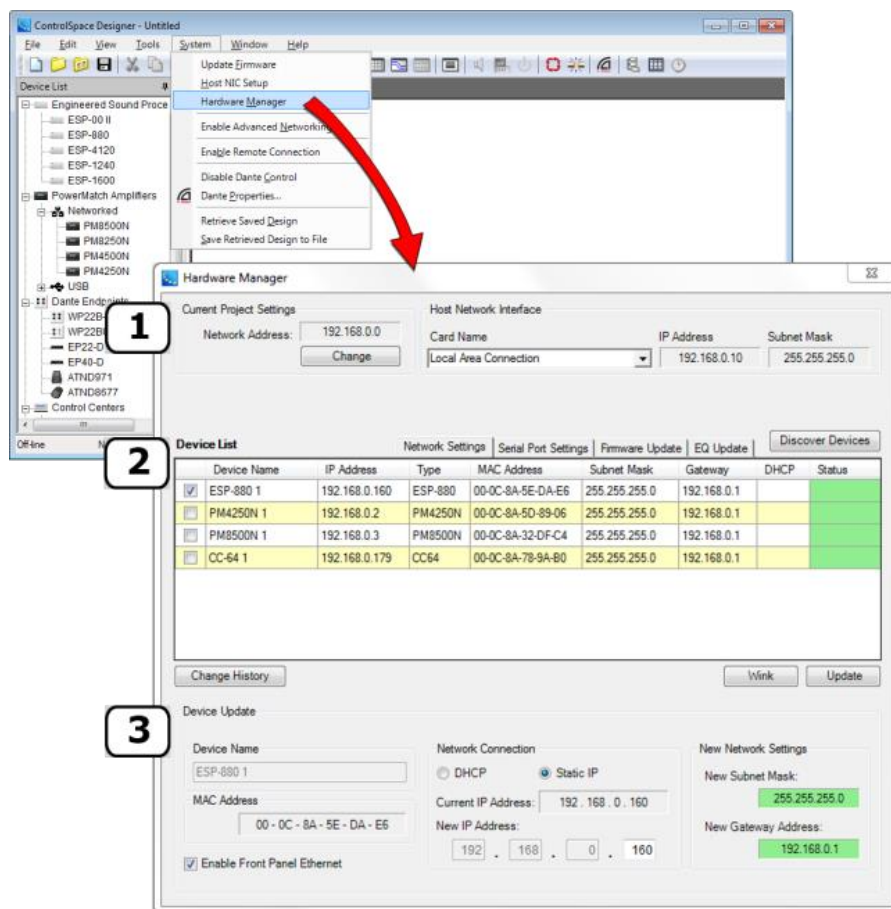


Figure 2 - Hardware Manager

Mixers, Routers, and Selectors Updates:

A new "Custom" selection has been added to the list of block size options for Matrix Mixers, Standard Mixers, Routers, and Source Selectors. The Custom option allows you to define the number of input and output ports rather than using a standard block size from the list.

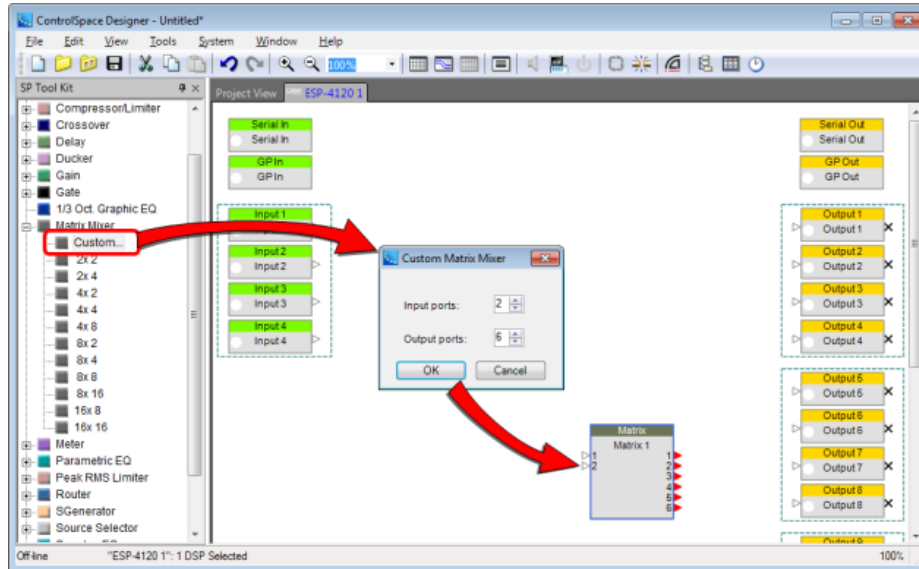


Figure 3 - Custom Blocks

Inputs and outputs for all Matrix mixers, Standard Mixers and Routers can now be labelled for easier operation.

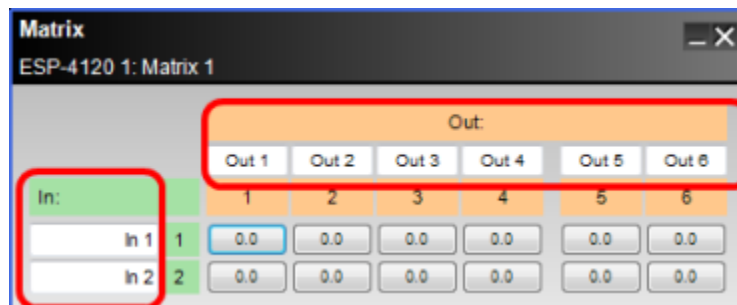


Figure 4 - Mixer & Router Labels

Multi-channel Gain

New multi-channel Gain modules allow multiple channels to be controlled with a single level/mute. These can be assigned directly to Control Centers and will remove the need to Group channels for many applications.

Text Notes

Notes/labels can be added to Project and Device views for system documentation.

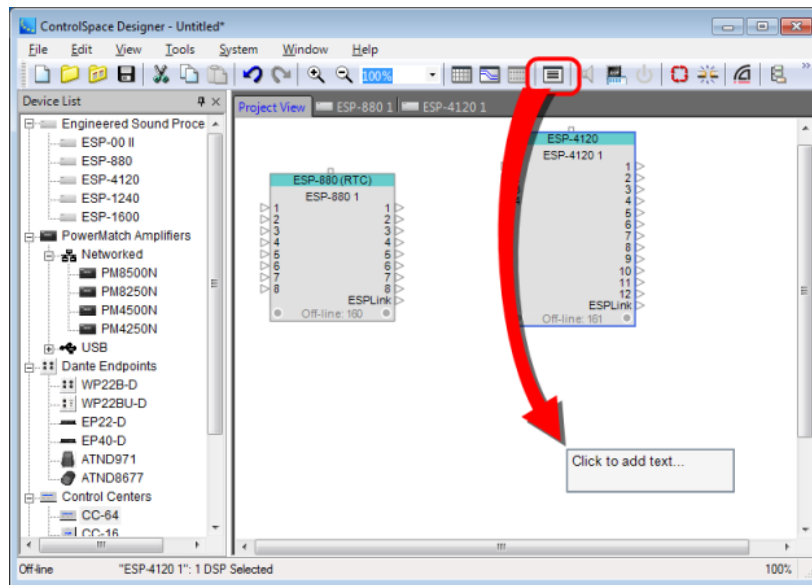


Figure 5 - Text Notes

Audio-Technica ATND-8677 Integration

Another Dante endpoint has been integrated - the Audio-Technica ATND8677 Microphone Desk Stand with Dante™ Network Output. Having the same Dante user switch capabilities as the ATND971 boundary mic, the ATND8677 allows Dante technology to be used with any phantom-powered condenser gooseneck microphone with a 3-pin XLRM-type output. The desk stand is designed for surface-mount applications such as high-quality sound reinforcement, conferencing, distance learning and other demanding sound pickup applications.

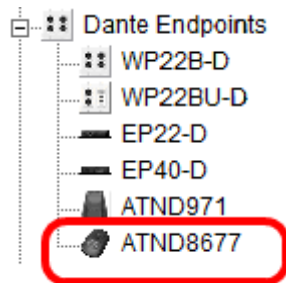


Figure 6 - ATND-8677 Integration

Firmware

This release includes the following firmware: ESP-880/4120/1240/1600 (v1.580) ESP-00 II (v4.580), ESP-88/00 (v4.580), PMxxxx (v2.080). No update to CC-64 or CC-16 firmware is required.

Minimum System Requirements

The following are the minimum system requirements for running ControlSpace Designer software:

- ▶ Microsoft Windows 7/8 (32bit or 64bit)
- ▶ 1GHz processor (or better)
- ▶ 512MB of available RAM (1GB recommended)
- ▶ 512MB of available disk space (1GB recommended)
- ▶ Minimum resolution of 1366x768 WXGA
- ▶ 1 available USB port
- ▶ 1 available Ethernet port (100Mb minimum, 1Gb recommended)
- ▶ ControlSpace Designer requires Microsoft® .NET Frameworks 3.5 and 4.5 to be installed. If required, version 4.5 will installed automatically as part of the installation of ControlSpace Designer. Windows 7 includes version 3.5 so no additional installation is required. For Windows 8, support for version 3.5 can be turned on using 'Turn Windows Features On/Off'.

Note the installation of Microsoft® .NET Framework 4.5 requires an internet connection. Alternatively a full 'offline' version can be downloaded from [here](#).

- ▶ ControlSpace Designer also requires the Microsoft® Visual C++ 2013 runtime library. If required, this will be installed automatically as part of the ControlSpace Designer installation.

Note that the Microsoft Windows XP operating system is no longer officially supported.

Changes / Fixes since v4.3

Basic Operation/Update

1. A timing issue that could cause a 'checksum' failure when updating the firmware on PowerMatch devices via Ethernet, from some Windows 8/8.1 PCs has been resolved.
2. Updating the PowerMatch EQ file via USB would result in a failed update being reported, when in fact it had been successful. This no longer occurs.

ControlSpace® Designer™ software

1. ControlSpace Designer v4.3 would not launch correctly in 'Monitor Mode' (-m in the command line), the issue has been resolved in this release it now works as expected.
2. An issue that prevented PowerMatch Status Panels from opening and could cause an unhandled exception when opening the Monitor Panel has been resolved.
3. With the Advanced Networking mode enabled, it was not possible to enter certain valid gateway IP addresses. This has now been corrected.
4. When using batch mode in Hardware Manager to change between classic network addresses, the last octet of the device IP addresses is now preserved. For example, when changing from 192.168.0.x /24 to 192.168.1.x /24 the devices will now retain their host addresses.

Control Centers/Programming

1. An issue that could cause level adjustments on a CC-64 to become 'jumpy' when the maximum or minimum levels were changed from their defaults has been corrected.

Serial Control

1. An issue that could cause ESP-880/4120/1240/1600 devices to cease responding if serial-over-Ethernet control connections were intermittent (using ControlSpace Remote at the edge of wireless coverage, for example) has been resolved.

Dante™ Network Audio

1. The name of the host device is now shown in parenthesis after the Dante card name in the Dante properties form to make associations clearer.
2. An 'Error Log' has been added to the Dante properties form to report operational and communication errors with Dante devices to aid fault-finding.

Changes / Fixes since v4.2

Basic Operation/Update

1. When a desired network interface (NIC) is selected using 'Host NIC Setup' or 'Hardware Manager' all ControlSpace communication is now routed via that adaptor even if another is set to the same network address.
2. The EQ database has been updated with new HP/LP filter settings for the '02' range of LT loudspeakers.

ControlSpace® Designer™ software

1. An issue that could prevent changes to the 'advanced' filter parameters on the PowerMatch Array EQ module from being actioned in the hardware has been resolved.
2. When an input channel of the AMM module is set to 'Use Channel Settings' from another, the values now update as expected even when the properties form is open.
3. Entering invalid characters into the numerical fields of the AMM control panel no longer causes an unhandled exception.

Control Centers/Programming

1. An issue that could prevent timer events from executing correctly until the ESP was rebooted if the same design, with the same (unchanged) timer settings had been uploaded multiple times, has been fixed.
2. Programming for GPI, Serial input and Timers has been streamlined and is now consistent with Control Centers. Level and mute parameters of inputs, outputs and gain modules may be assigned directly to GPI, Serial input and Timer events along with Selectors. Changes to all other modules should be made indirectly using Parameter sets.
3. Dante and CobraNet outputs can now be added directly to Groups. An error that would occur if the ESP-88/00 card variant only had 8x input channels has been resolved.
4. Changes made to ESPLink, Dante or CobraNet inputs and outputs via the CC-16 simulator now work as expected.
5. When a PowerMatch output is assigned to an analog GPI pin on an ESP the maximum volume is now automatically changed to 0dB so the maximum level is not exceeded.
6. Previously the 'Master Fader' menu item was incorrectly disabled for PowerMatch input groups, this has now been resolved.
7. It was possible for ControlSpace Designer to become out-of-sync or lose communication with hardware if large Parameter Sets were recalled in quick succession. Recall of Parameter Sets via CSD has been optimized and the issue should no longer occur.
8. When Parameter Sets that spanned multiple devices were assigned to CC-64/CC-16 controls and a subset of those devices were rebooted, or disconnected/reconnected it was possible for incorrect Parameter Sets to be recalled. The Parameter Set selection is now synchronized at power-up or when a device re-joins the network so the issue no longer occurs.

Serial Control

1. Previously the ESP-88/00 could fail to boot correctly if traffic was present on the RS232 serial port during the boot process. The issue has been resolved and this no longer occurs.
2. Additional serial commands have been added to set and query network parameters such as Subnet Mask and Default Gateway and to allow devices to be reset/rebooted.

Dante™ Network Audio

3. In this release, Dante control via ControlSpace Designer is turned off by default, and can be enabled via the System menu option for projects that include Dante audio networking.
4. Previously it was possible to select a Dante Virtual Soundcard as the 'Preferred Master'. This was incorrect and the option has now been removed.
5. This release adds support for the new Audio Technica ATND-8677 Dante microphone in a similar fashion to the ATND-971.