

- ⚠ CAUTION:** Installation should only be performed by trained service personnel.
- ⚠ CAUTION:** Make no modification to the system or accessories. Unauthorized alterations may compromise safety, regulatory compliance and system performance.
- ⚠ CAUTION:** ESD sensitive device. Handle with care.

1. Turn off and unplug the ESP.
2. Detach the top cover by removing the 8 screws.
3. Remove a bracket from an empty slot from slots 5-8 by removing the 2 screws (save these screws). The Surround Sound Input Card will replace this bracket.
4. Position the card in the chassis. Be sure to align the card's LEDs with the holes in the front of the chassis, and make sure the connector on the side of the card is aligned with the connector on the motherboard. Use the black guide on the bottom of the case to direct the card using the grooves. See *Figure 1*.
5. When the connector on the card is aligned above the connector on the motherboard, press gently to mate the connectors. See *Figure 2*.
6. Screw the card into place.
7. Reattach the top cover and fasten the 8 screws.
8. Plug in the power supply and turn on the ESP.

NOTE: For compliance with EMC regulations, only one Surround Sound card may be added per ESP.

Figure 1

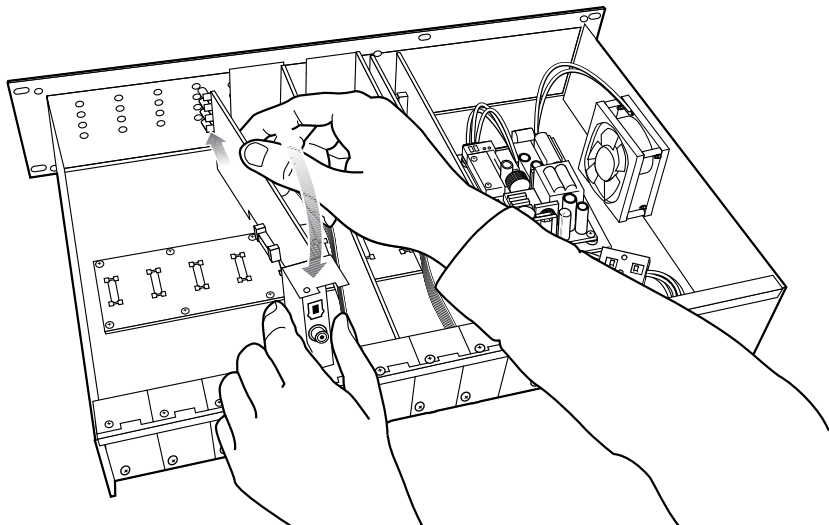
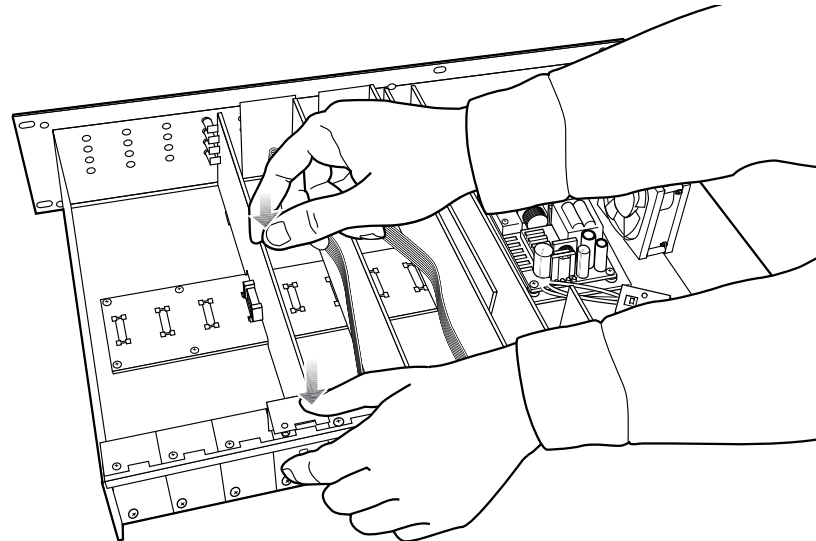
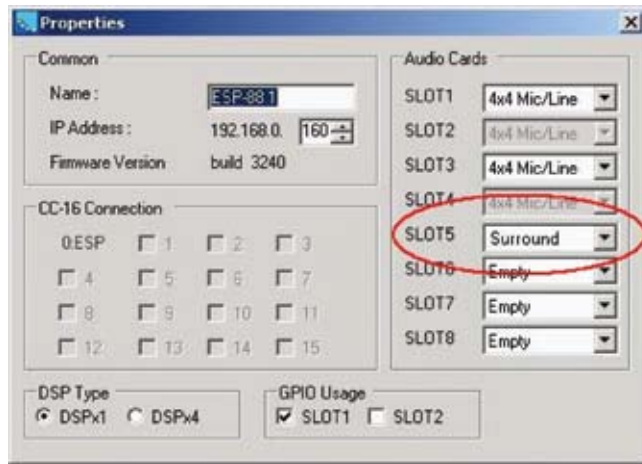


Figure 2



9. Use the ControlSpace® Designer™ software to verify the card was inserted correctly:
 - a) Press scan and confirm that the software detects the card.
 - b) If the card was installed correctly, right-clicking the ESP and displaying its properties will show **Surround** in the correct slot in the ESP.
See Figure 3.

Figure 3



10. If an error message appears, or the software does not properly detect the Surround Sound Input Card, repeat the installation instructions. Be sure that the card is completely pushed into the connector, and that the card is properly aligned in the chassis.

Manufactured under license from Dolby Laboratories. "Dolby" and the double-D symbol are trademarks of Dolby Laboratories. This product contains one or more programs protected under international and U.S. copyright laws as unpublished works. They are confidential and proprietary to Dolby Laboratories. Their reproduction or disclosure, in whole or in part, or the production of derivative works therefrom without the express permission of Dolby Laboratories is prohibited. ©1993-2002 by Dolby Laboratories, Inc. All rights reserved.

Manufactured under license under U.S. Patent #'s: 5,451,942; 5,956,674; 5,974,380; 5,978,762; 6,487,535; 7,003,467; 7,212,872 & other U.S. and worldwide patents issued & pending. DTS, DTS Digital Surround, ES, and Neo:6 are registered trademarks and the DTS logos, and Symbol are trademarks of DTS, Inc. © 1996-2007 DTS, Inc. All Rights Reserved



312940

BOSE[®]
Better sound through research[®]

©2010 Bose Corporation, The Mountain Framingham,
MA 01701-9168 USA
AM312940 Rev.04
pro.Bose.com